

FIG

FIG WORKING WEEK 2017

Helsinki Finland

29 May - 2 June 2017

*Presented at the FIG Working Week 2017,
May 29 - June 2, 2017 in Helsinki, Finland*



Surveying the world of tomorrow -
From digitalisation to augmented reality

Organised by



Platinum Sponsors:





FIG WORKING WEEK 2017

Surveying the world of tomorrow -

Helsinki Finland 29 May - 2 June 2017

From digitalisation to augmented reality

Insecurity of Land Tenure and Women Vulnerability in Climate Change



Platinum Sponsors:





FIG WORKING WEEK 2017

Surveying the world of tomorrow -

Helsinki Finland 29 May - 2 June 2017

From digitalisation to augmented reality

Method and Data

Case studies:

Rural areas of developing countries with customary and religious tenure system

In 3 main parts:

- a. Factors of women vulnerability
- b. Women's land right
- c. Linkage of land tenure security and women vulnerability
 - effects of climate change on livelihood, land and natural resources productivity
 - effects of climate change and land-related issues



Platinum Sponsors:





FIG WORKING WEEK 2017

Surveying the world of tomorrow -

Helsinki Finland 29 May - 2 June 2017

From digitalisation to augmented reality

Significance of research

- Gender mainstreaming in vulnerability assessment
- Importance of women's insecurity of tenure in their vulnerability.
- Importance of securing women's land tenure to help them use their potential adaptive capacity which as well as reducing women vulnerability, benefit environment and the whole society.



Platinum Sponsors:





FIG WORKING WEEK 2017

Surveying the world of tomorrow -

Helsinki Finland 29 May - 2 June 2017

From digitalisation to augmented reality

Results

- Insecurity of land tenure as a factor of women vulnerability in climate change
- Importance of both quantitative and qualitative parameters of secure access to land in women vulnerability in climate change . Quantitative parameters mostly in facing with long term effects and qualitative parameters especially in facing with short term effects of climate change
- Importance of social aspects (social norms, culture and religion) as a link between women security of tenure and their vulnerability



Platinum Sponsors:





FIG WORKING WEEK 2017

Surveying the world of tomorrow -

Helsinki Finland 29 May - 2 June 2017

From digitalisation to augmented reality

a. Women vulnerability

Climate Change

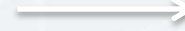
exaggerate



Gender Inequality

(Rights, Responsibilities, Opportunities)

affects



Women Vulnerability

Exposure, Adaptive capacity, Sensitivity



Platinum Sponsors:





FIG WORKING WEEK 2017

Surveying the world of tomorrow -

Helsinki Finland 29 May - 2 June 2017

From digitalisation to augmented reality

a. Women vulnerability: Ghana and Bangladesh

responsibilities

Household management
Dependent on natural resources
Collection of water and fuels



Unpaid worker → Less income
More burden → negative effect on health
competition over resources → face with violence
Less mobility



FIG WORKING WEEK 2017

Surveying the world of tomorrow -

Helsinki Finland 29 May - 2 June 2017

From digitalisation to augmented reality

a. Women vulnerability: Ghana and Bangladesh

Rights, Responsibilities
opportunities

Low level of education
Less decision making power
Poor access to market



Low economic position → force getting married
Less access to information →
Less participation in civil society organization, less awareness of women's needs
Less ability to transform assets to income

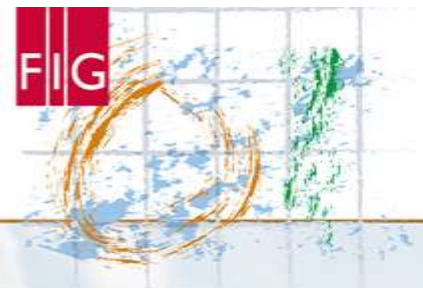


FIG WORKING WEEK 2017

Surveying the world of tomorrow -

Helsinki Finland 29 May - 2 June 2017

From digitalisation to augmented reality

a. Women vulnerability: Ghana and Bangladesh





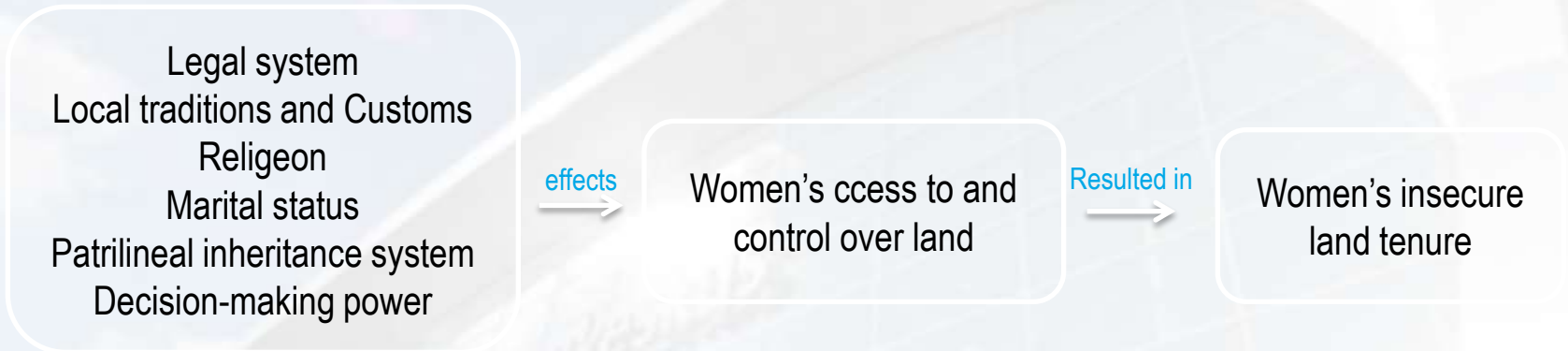
FIG WORKING WEEK 2017

Surveying the world of tomorrow -

Helsinki Finland 29 May - 2 June 2017

From digitalisation to augmented reality

b. Women's land right : Ghana and Bangladesh



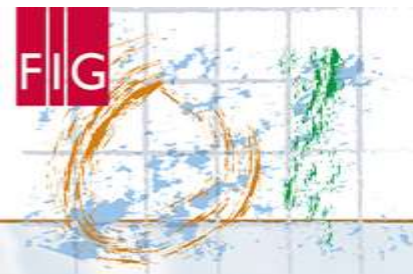


FIG WORKING WEEK 2017

Surveying the world of tomorrow -

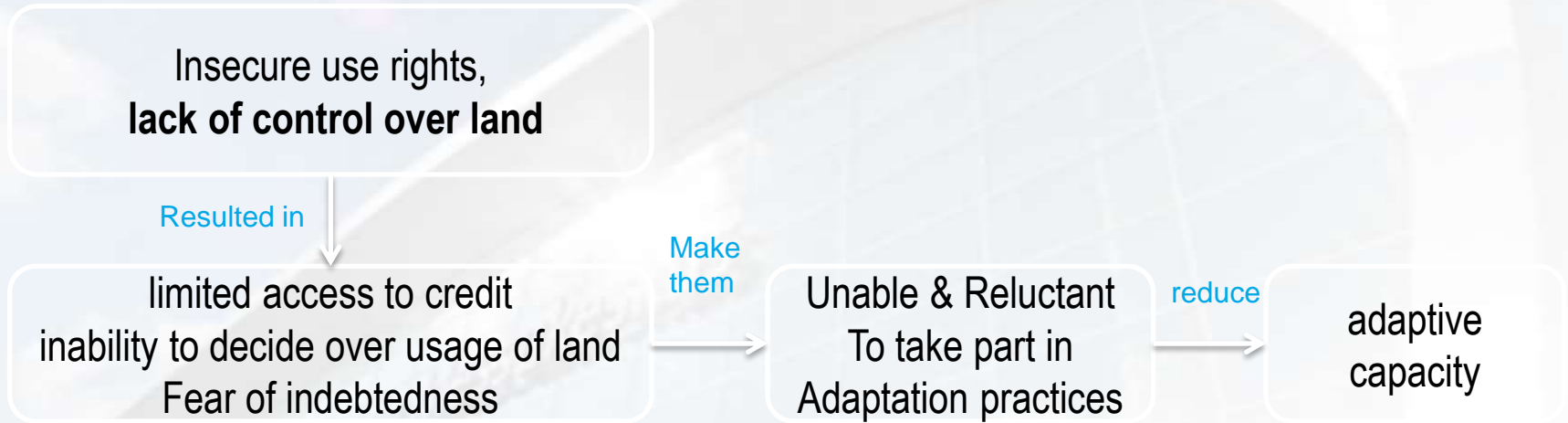
Helsinki Finland 29 May - 2 June 2017

From digitalisation to augmented reality

c. Linkage of land tenure security and vulnerability

effects of climate change on livelihood, land and natural resources productivity (kenya, Ghana)

Women potential adaptive capacity, but least adaptive capacity and most affected by droughts?



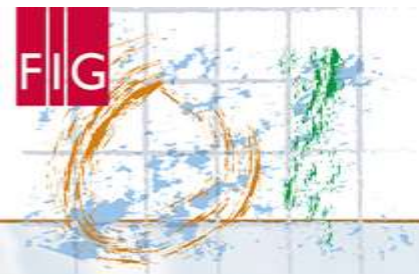


FIG WORKING WEEK 2017

Surveying the world of tomorrow -

Helsinki Finland 29 May - 2 June 2017

From digitalisation to augmented reality

c. Linkage of land tenure security and women vulnerability effects of climate change and land-related issues (Bangladesh)

Landless, homeless, land use change



Temporary & permanent settlement, Conflicts

Lack of consideration of different group of women in resettlement programs

Settle in insecure lands (from disaster & land tenure prospective)

- Fear of eviction & dispossession
- Higher exposure and sensitivity

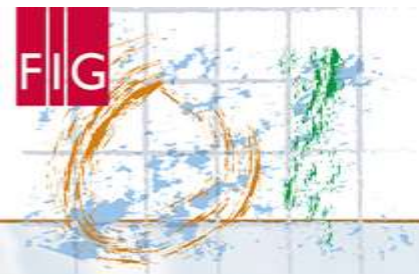


FIG WORKING WEEK 2017

Surveying the world of tomorrow -

Helsinki Finland 29 May - 2 June 2017

From digitalisation to augmented reality

c. Linkage of land tenure security and women vulnerability effects of climate change and land-related issues (Indonesia)

Displacement, conflicts

Displaced women lose social security and location-specific income

Women returnees at risk of

- Dispossession by social norms and legal rules in form of violence
- being force to get married or remarried



Platinum Sponsors:



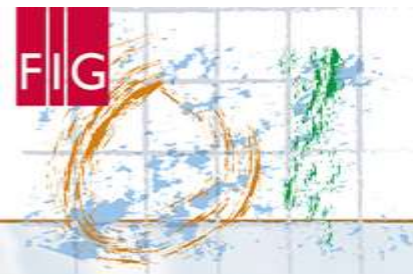


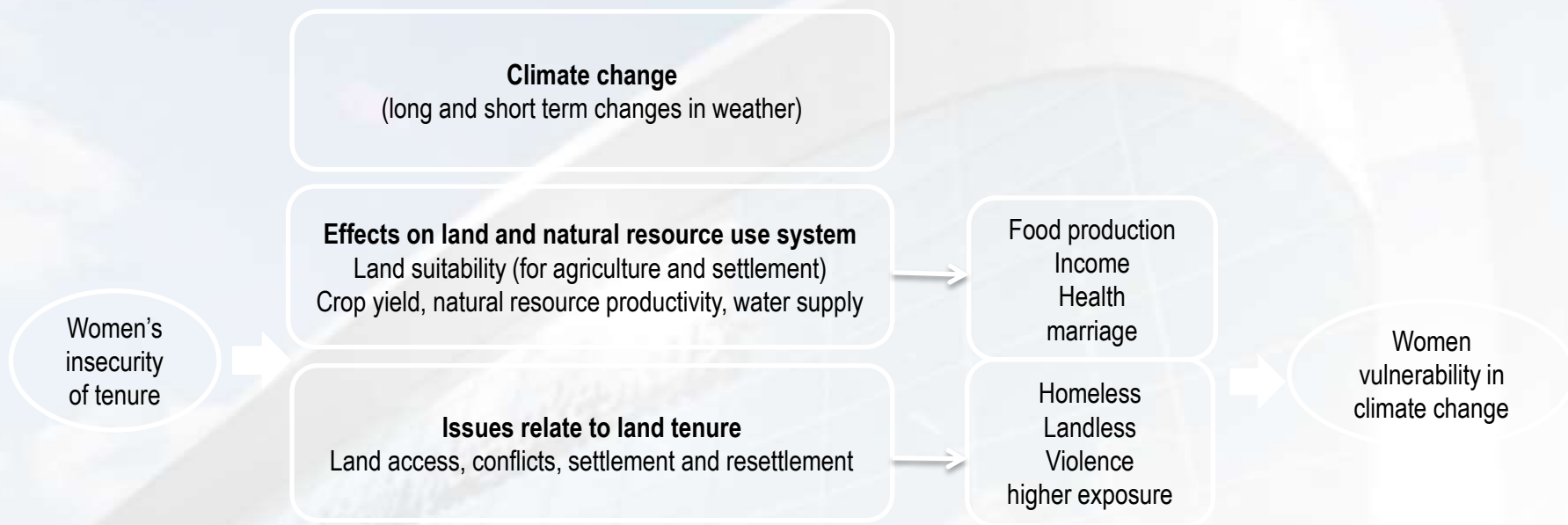
FIG WORKING WEEK 2017

Surveying the world of tomorrow -

Helsinki Finland 29 May - 2 June 2017

From digitalisation to augmented reality

c. Linkage of land tenure security and women vulnerability



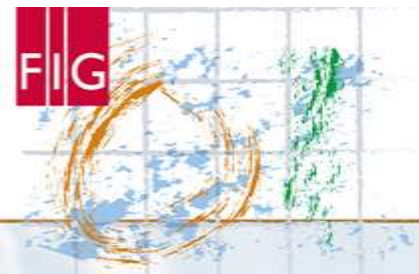


FIG WORKING WEEK 2017

Surveying the world of tomorrow -

Helsinki Finland 29 May - 2 June 2017

From digitalisation to augmented reality

c. RESULT/ women vulnerability in climate change

- Quantitative parameters of secure access to land (in terms of inadequacy in the range of land rights) mostly in facing with long term effects of climate change on land and natural resource use system
- Qualitative parameters of secure access to land (in terms of protection of land rights) especially in facing with short term effects of climate change in Issues relate to land tenure
- social norms, culture and religion are key factors affecting women security of tenure and vulnerability in climate change



Platinum Sponsors:





FIG WORKING WEEK 2017

Surveying the world of tomorrow -

Helsinki Finland 29 May - 2 June 2017

From digitalisation to augmented reality

Thank you



Platinum Sponsors:

