

# Geospatial Aspects of Maritime Boundary Delimitation in the Singapore Strait Involving Indonesia, Malaysia and Singapore

I Made Andi Arsana



The Australian National Centre for Ocean Resources & Security (**ANCORS**)  
University of Wollongong, Australia  
&  
Geodetic Engineering  
Gadjah Mada University, Indonesia

**FIG Congress 2010**  
Sydney, 11-16 April 2010

Today is Monday, May 03, 2010



Gadjah Mada University  
Indonesia

University of Wollongong



## Our Institution...

Dept of Geodetic Engineering  
Gadjah Mada University  
INDONESIA



Jl. Grafika No. 2, Yogyakarta,  
55281, INDONESIA  
P: +62 274 902121  
F: +62 274 520226  
[geodesi@ugm.ac.id](mailto:geodesi@ugm.ac.id)  
[www.geodesi.ugm.ac.id](http://www.geodesi.ugm.ac.id)

ANCORS  
University of Wollongong  
AUSTRALIA



Wollongong, NSW,  
2522. AUSTRALIA  
P: +61 2 4221 4883  
F: +61 2 4221 5544  
[myree@uow.edu.au](mailto:myree@uow.edu.au)  
[www.ancors.uow.edu.au](http://www.ancors.uow.edu.au)



Gadjah Mada University  
Indonesia

University of Wollongong



## Outline

- Introduction
- Maritime jurisdiction - LOSC
- Maritime boundary delimitation
- Sovereignty dispute in the Singapore Strait
- Geospatial analysis
- Delimitation options
- Concluding remarks

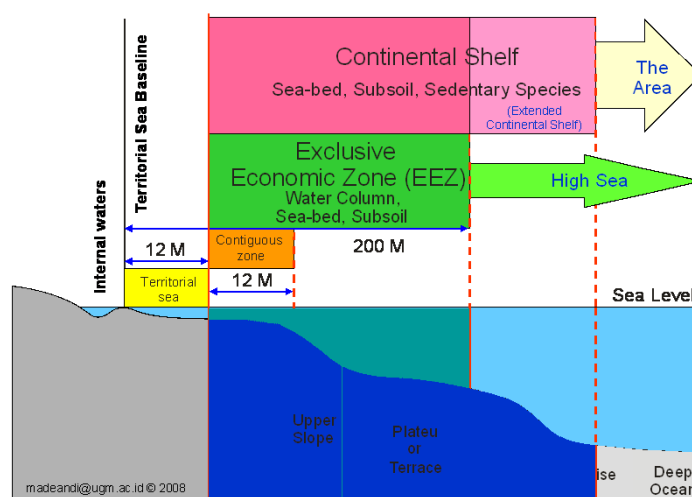


Gadjah Mada University  
Indonesia

University of Wollongong



## Maritime Jurisdictions - LOSC 1982



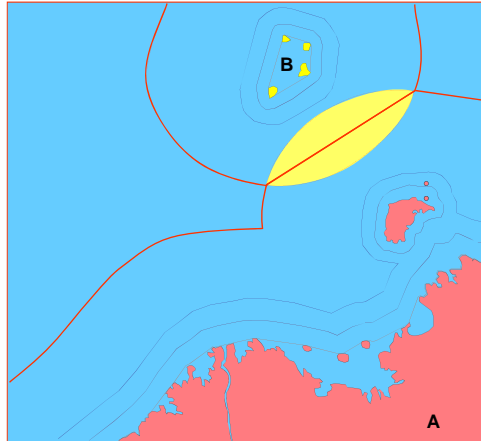
Gadjah Mada University  
Indonesia

University of Wollongong



## Principles of Maritime Boundary Delimitation

- State A Main land
- Archipelagic State B
- Fringing islands
- Island
- Low Tide Elevations
- Baselines
- Territorial sea Limit 12 M
- Contiguous zone Limit 24 M
- EEZ Limit 200 M
- Overlapping claim
- Maritime boundary



Arsana, 2007: 9

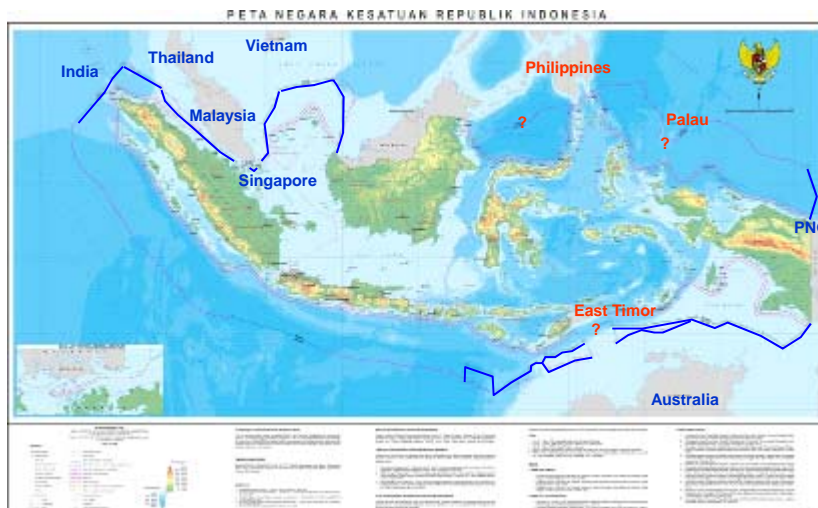


Gadjah Mada University  
Indonesia

University of Wollongong



## Indonesia and its ten neighbours



Bakosurtanal, 2006



Gadjah Mada University  
Indonesia


University of Wollongong






### Geospatial analysis


- **BAC**
  - Chart title: Singapore Strait: Eastern Part.
  - Chart number: BAC-3831.
  - Scale: 1:75.000.
  - Horizontal datum: WGS84.
  - Vertical datum: Lowest Astronomical Tides (LAT).
  - Coordinate System: Geography.
  - Coordinate coverage: 1°00'00" N to 1°30'00" N and 104°00'00" E to 104°30'00" E.
- Caris LOTS™ → delimitation simulation



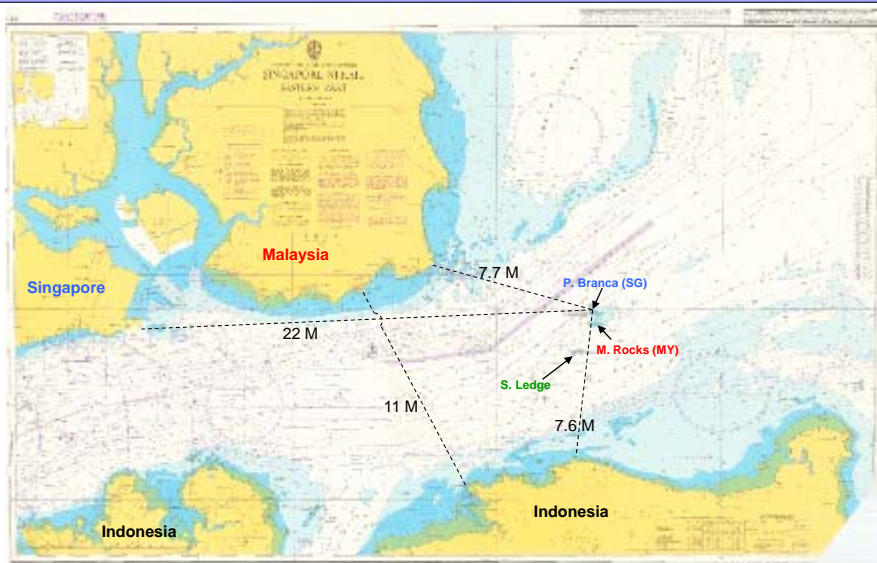
Gadjah Mada University  
Indonesia

University of Wollongong





## Singapore Strait

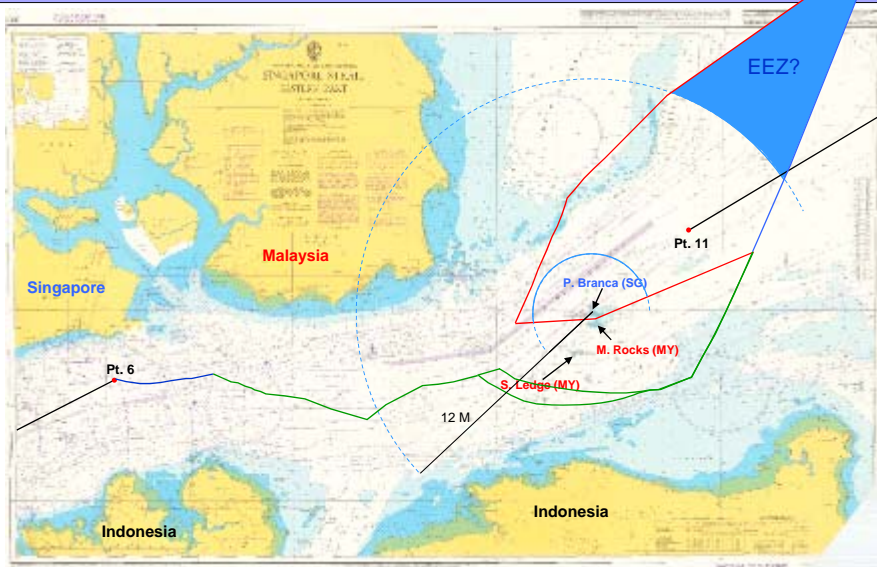


Gadjah Mada University  
Indonesia

University of Wollongong



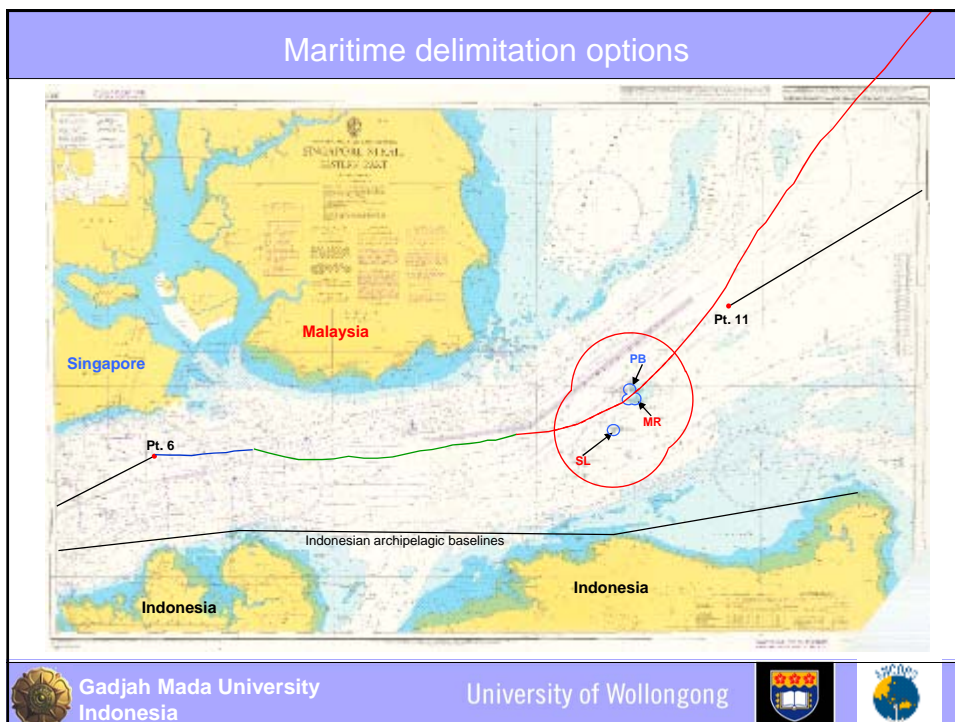
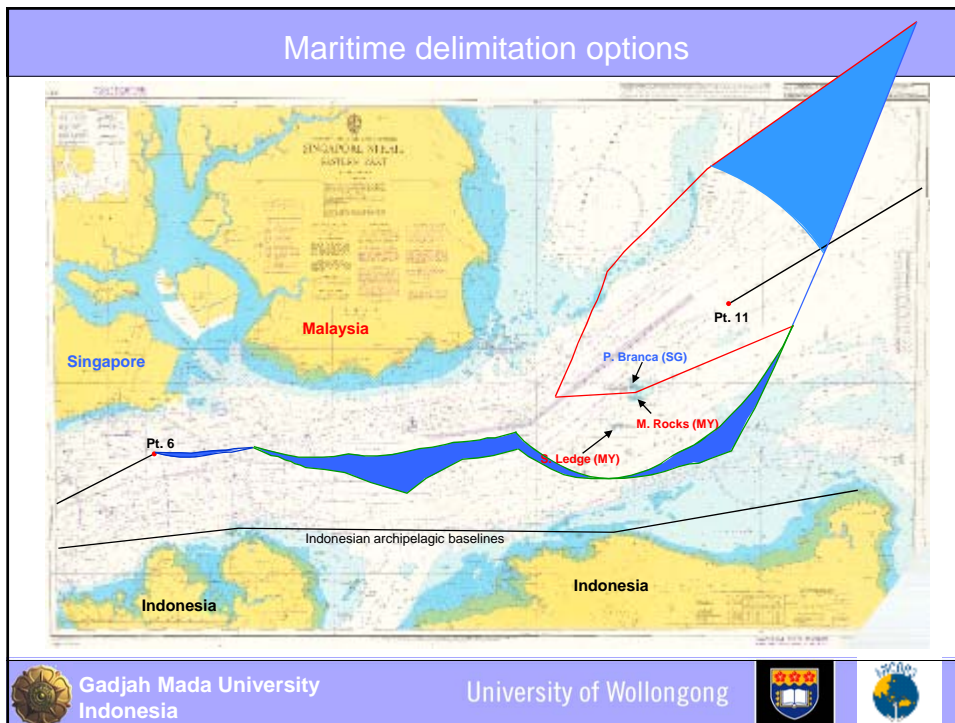
## Maritime delimitation options



Gadjah Mada University  
Indonesia

University of Wollongong





## Concluding remarks

- Maritime jurisdiction → LOSC
- Overlapping claims → delimitation
- Principles of Maritime Boundary Delimitation
- Sovereignty dispute between Sing and My
- Certainty of sovereignty → good impact on maritime boundary delimitation
- Delimitation options: Indonesia, Malaysia and Singapore
- Ongoing negotiations



Gadjah Mada University  
Indonesia

University of Wollongong



Thank you 😊



Gadjah Mada University  
Indonesia

University of Wollongong

