




"From the wisdom of the ages
to the challenges of modern world"

FIG WORKING WEEK 2015

17-21 MAY SOFIA BULGARIA

Organised by:   CHAMBER OF GRADUATED SURVEYORS

Platinum Sponsors:  






"From the wisdom of the ages
to the challenges of modern world"



FIG WORKING WEEK 2015

17-21 MAY SOFIA BULGARIA

**Application of Land Administration Domain Model to
Recognition of Indigenous Community Rights in the Philippines:
Laws Examined with Spatial Dimensions Tribes Land Rights**



Organised by:   CHAMBER OF GRADUATED SURVEYORS

Platinum Sponsors:  



"From the wisdom of the ages
to the challenges of modern world"

FIG WORKING WEEK 2015
17-21 MAY SOFIA BULGARIA

3

Research Team:



João P. Hespanha, University of Aveiro / ESTGA



Silvane Paixão, Consultant



Tarun Ghawana, Integrated Spatial Analytics Consultants (ISAC)



Jaap Zevenbergen, University of Twente / ITC



Andrea T. Carneiro, Federal University of Pernambuco (UFPE)



Platinum Sponsors:



"From the wisdom of the ages
to the challenges of modern world"

FIG WORKING WEEK 2015
17-21 MAY SOFIA BULGARIA

4

Outline

- Background Information
- Core LADM classes
- LADM Modelling
- Conclusions



Platinum Sponsors:

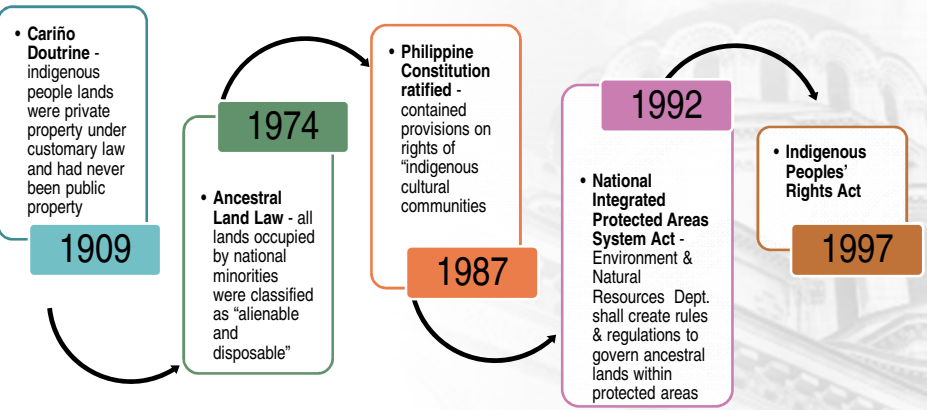




"From the wisdom of the ages to the challenges of modern world"

FIG WORKING WEEK 2015
17-21 MAY SOFIA BULGARIA

Background

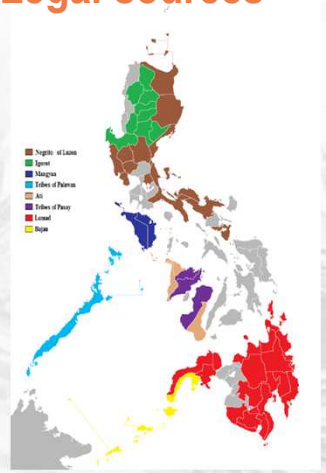


"From the wisdom of the ages to the challenges of modern world"

FIG WORKING WEEK 2015
17-21 MAY SOFIA BULGARIA

LADM core classes: Definitions/Legal sources

- **LA_GroupParty:**
 - Population of 12-15 million (10-15% of the Philippine population)
 - 100-110 ethnic groups
 - Indigenous lands are in 65 of the country's 78 provinces





"From the wisdom of the ages
to the challenges of modern world"

FIG WORKING WEEK 2015
17-21 MAY SOFIA BULGARIA

LADM core classes: Definitions/Legal sources

- **LA_Party:**
 - National Commission on Indigenous Peoples (NCIP)
 - Land Registration Authority (LRA)
 - Torrens Title system

- **LA_SpatialUnitGroup:**
 - Tribal Land: "alienable and disposable" - Torrens titles from the government
 - Habitats: indigenous private property under customary law
 - Spatial/Administrative Sources:
 - Certificate of Ancestral Domain and Lands Title
 - Communal Claims
 - Customary Laws
 - Right to Claim Parts of Reservations



Platinum Sponsors:



"From the wisdom of the ages
to the challenges of modern world"

FIG WORKING WEEK 2015
17-21 MAY SOFIA BULGARIA

LADM core classes: Definitions/Legal sources

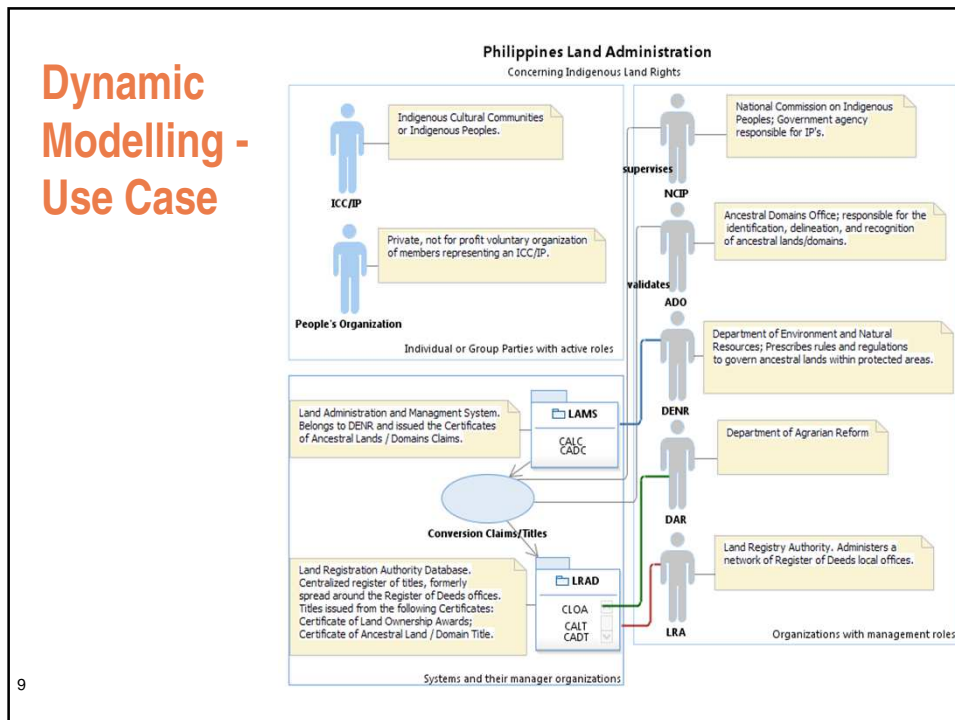
- **LA_RRRs:**
 - Land ownership: communal to semi-communal to private.
 - Indigenous communities rights to :
 - ancestral domains
 - develop Lands and Natural Resources
 - regulate entry of migrant settlers and organizations into the domains
 - safe and clean air and water for which ICCs/lps
 - ancestral Lands
 - » Rights to transfer land / property include right to transfer to land or property rights to / among members of the same ICCs/IPs, subject to customary laws and traditions of the community
 - exclusive right to firewood, lumber, and derived forest products
 - Indigenous communities responsible to :
 - Maintain Ecological Balance / Restore Denuded Areas / Observed Laws



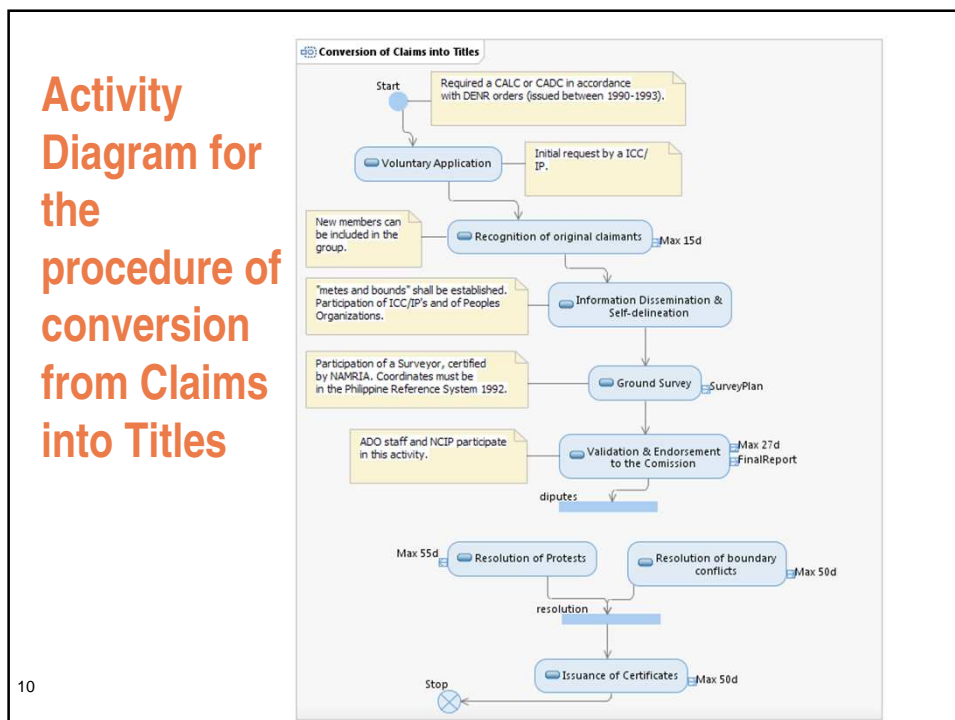
Platinum Sponsors:



Dynamic Modelling - Use Case



Activity Diagram for the procedure of conversion from Claims into Titles





"From the wisdom of the ages
to the challenges of modern world"

FIG WORKING WEEK 2015
17-21 MAY SOFIA BULGARIA

Conclusion

- Common understanding of Land Administration domain
- Standardized models (RRR) to their spatial units geometries could improve administrative procedures
- Defined responsibilities for data maintenance can be achieved
- A common data model will allow interoperability and data sharing, avoiding duplication and inconsistent information.



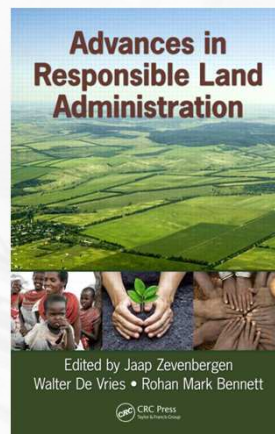
Platinum Sponsors:



"From the wisdom of the ages
to the challenges of modern world"

FIG WORKING WEEK 2015
17-21 MAY SOFIA BULGARIA

**More academic overview of developments on land tools,
coming out in august 2015**



Platinum Sponsors:



"From the wisdom of the ages
to the challenges of modern world"

FIG WORKING WEEK 2015
17-21 MAY SOFIA BULGARIA

Application of Land Administration Domain Model to Recognition of Indigenous Community Rights in the Philippines: Laws Examined with Spatial Dimensions Tribes Land Rights



Jphespanha at mx.com



silvanepaixao at hotmail.com
aftc at ufpe.br



Tarungh at gmail.com



j.a.zevenbergen at wente.nl



Images credit: <http://www.slideshare.net/jhaymoja/ung-kauri-mo-teh>



Platinum Sponsors:

