

Official Spatial Data as the Basis for Management in Agriculture

Sanja ZEKUŠIĆ, Željko BAČIĆ,
Republic of Croatia

Overview

- Common Agricultural Policy of the European Union – CAP
 - 41.1 billion EUR in 2009 (40%)
- Subsidies in agriculture
- Prerequisites for implementation:
 - **Integrated Administration and Control System (IACS)** - allocate, monitor and control direct payments to farmers
 - **and Land Parcel Identification System (LPIS)** - identification system for agricultural parcels

Land Parcel Identification System - LPIS

- "LPIS is established on the basis of maps... Use shall be made of computerized geographical information system techniques including preferably aerial or spatial orthoimagery, with an homogenous standard guaranteeing accuracy at least equivalent to cartography at a scale of 1:10 000."
- Started in November 2007 - National LPIS Establishment Program
- Ministry of Agriculture, Fisheries and Rural Development and Agency for Payments in Agriculture, Fisheries and Rural Development
- Support the State Geodetic Administration (SGA) and Croatian Geodetic Institute (CGI)

LPIS spatial data

- Digital orthophoto map in the scale of 1:5,000 (DOP5)
- Digital cadastral maps (DCM)
- Digital terrain model (DTM)
- Topographic map in the scale of 1:25,000 (TM25)
- Central Spatial Data Register (CSDR) information

www.arkod.hr (2009)

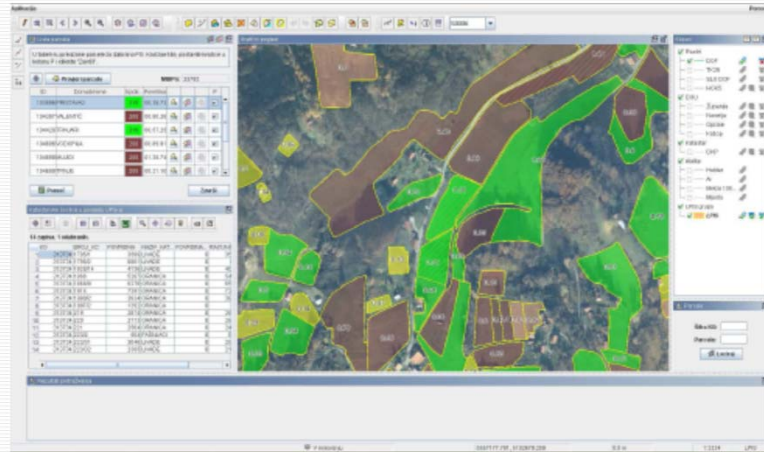


FIG Congress 2010
Sydney, Australia, 11-16 April 2010

www.dgu.hr