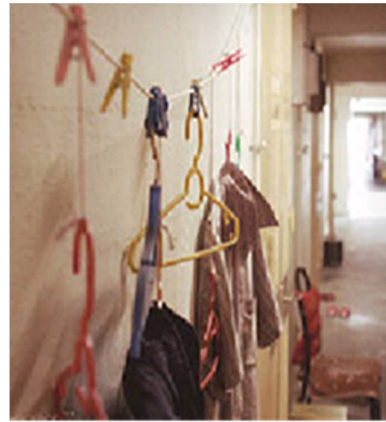


# Drying Area : An Empirical Study Of The Missing Link In High- Rise Residential Buildings In Malaysia



XXV International Federation of Surveyors  
Congress, Kuala Lumpur, Malaysia, 16 – 21  
June 2014

## Before & After

### Traditional Living



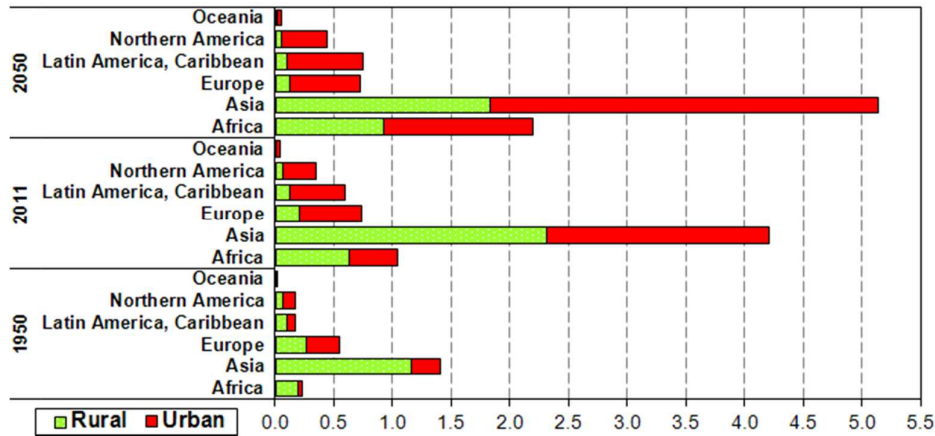
### High Rise Living



XXV International Federation of Surveyors  
Congress, Kuala Lumpur, Malaysia, 16 – 21  
June 2014

# World Urbanization Prospects, the 2011 Revision

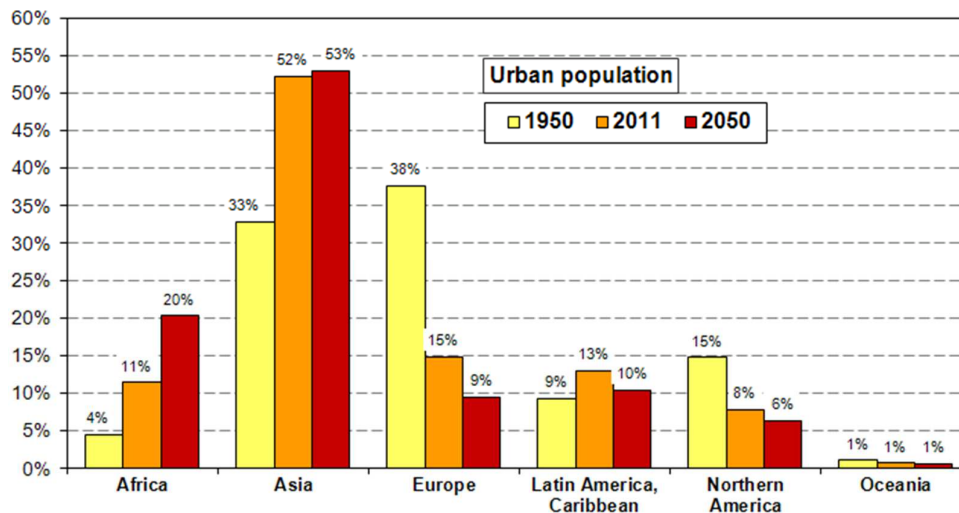
from <http://esa.un.org/unup/Analytical-Figures>



XXV International Federation of Surveyors  
Congress, Kuala Lumpur, Malaysia, 16 – 21  
June 2014

## Distribution of the world urban population by major area

from <http://esa.un.org/unpd/wup/Analytical-Figures/>



XXV International Federation of Surveyors  
Congress, Kuala Lumpur, Malaysia, 16 – 21  
June 2014

Vertical living is the way to go for the future.



XXV International Federation of Surveyors  
Congress, Kuala Lumpur, Malaysia, 16 – 21  
June 2014

## Syndrome of the two cities

**Hanging Flag Poles (S'pore)**

**Hanging Laundries (M'sia)**



XXV International Federation of Surveyors  
Congress, Kuala Lumpur, Malaysia, 16 – 21  
June 2014

## Dry Yard or drying area prerequisite in M'sia context

UUBL (Uniform Bldg By Laws)  
Ventilation 10% of the built up room area without any specification.



- Overseas context conceal hanging laundries from public view by authorities or residents association



XXV International Federation of Surveyors  
Congress, Kuala Lumpur, Malaysia, 16 – 21  
June 2014

## Typical or common way of drying clothes in high rise residential buildings in M'sia urban cities – Hanging laundries syndrome



XXV International Federation of Surveyors  
Congress, Kuala Lumpur, Malaysia, 16 – 21  
June 2014

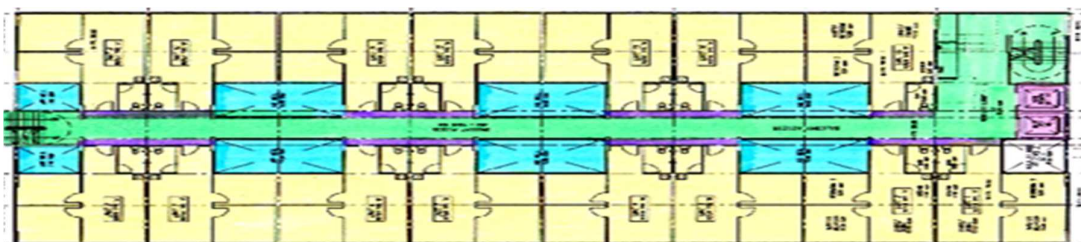
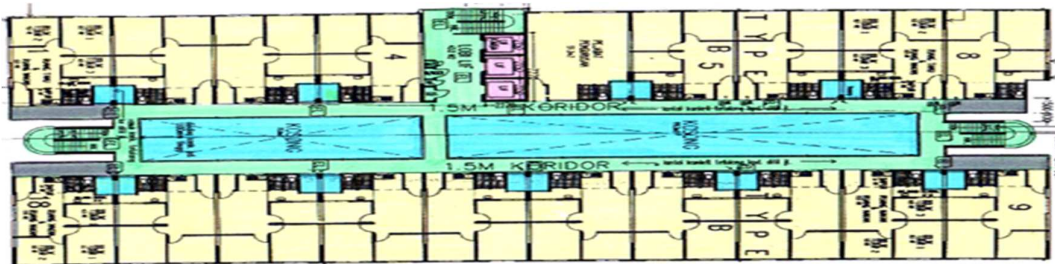
# Residential high rise layout plan typologies common in M'sia urban cities

- Single block with common corridors fronting apartment units



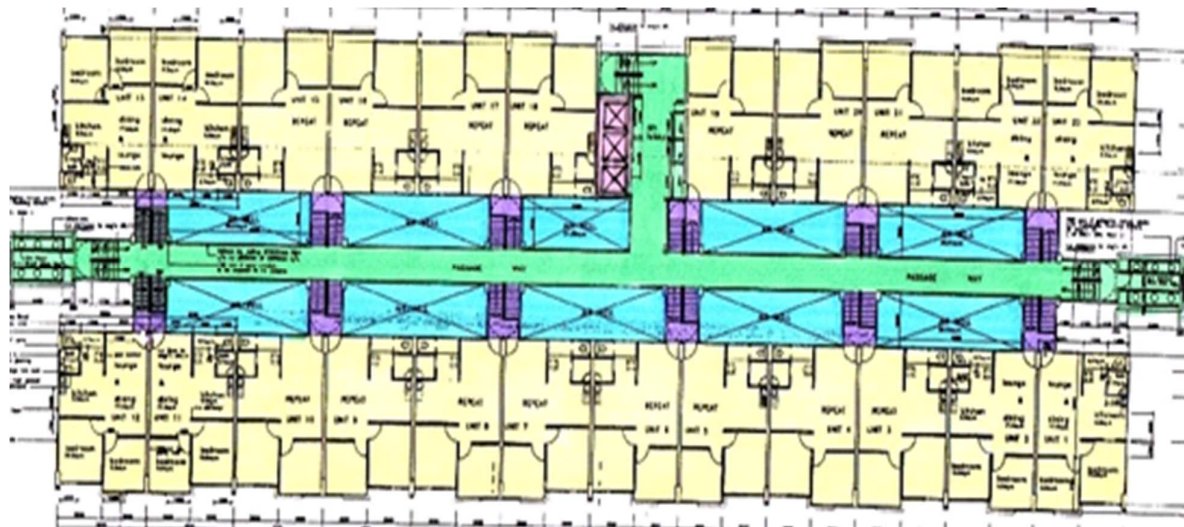
XXV International Federation of Surveyors  
Congress, Kuala Lumpur, Malaysia, 16 – 21  
June 2014

- Double sandwich block with common or alternate internal air wells



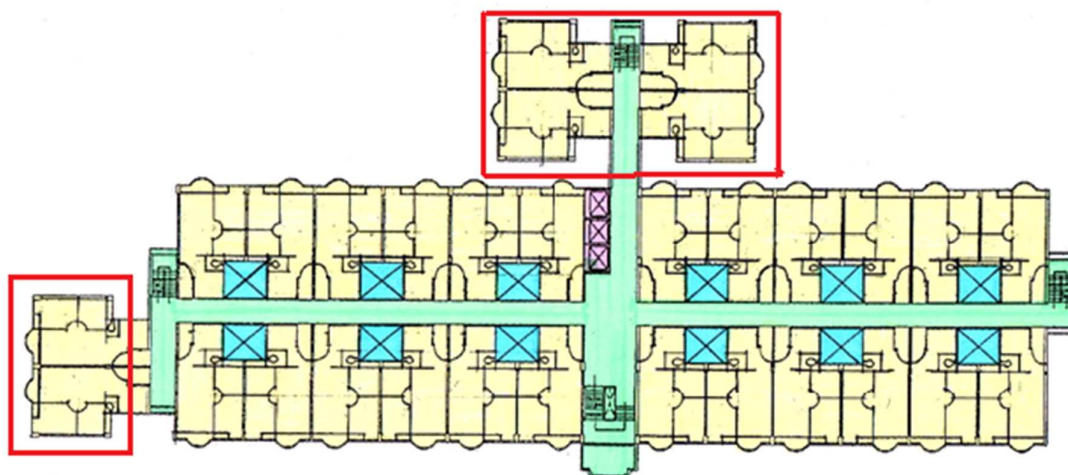
XXV International Federation of Surveyors  
Congress, Kuala Lumpur, Malaysia, 16 – 21  
June 2014

## Typical double sandwich block with common air wells – variation 2



XXV International Federation of Surveyors  
Congress, Kuala Lumpur, Malaysia, 16 – 21  
June 2014

## Double sandwich block with extensions : Additional as indicated in the red box



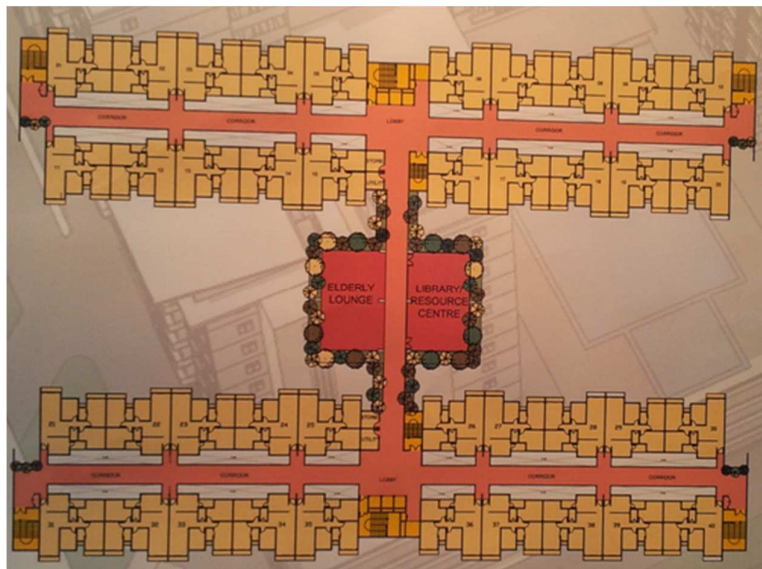
XXV International Federation of Surveyors  
Congress, Kuala Lumpur, Malaysia, 16 – 21  
June 2014

Single slab block with extensions : Additional as indicated in the red box



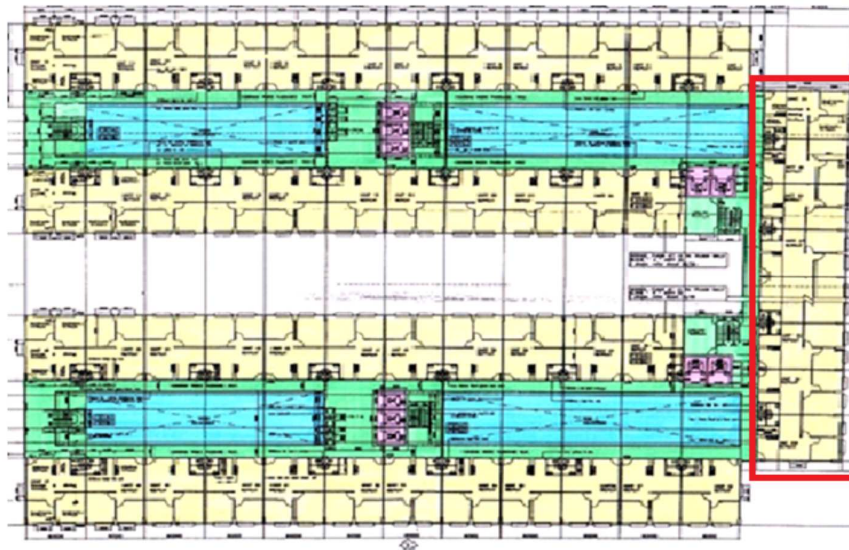
XXV International Federation of Surveyors  
Congress, Kuala Lumpur, Malaysia, 16 – 21  
June 2014

Two (2) double sandwich blocks link by a common public area



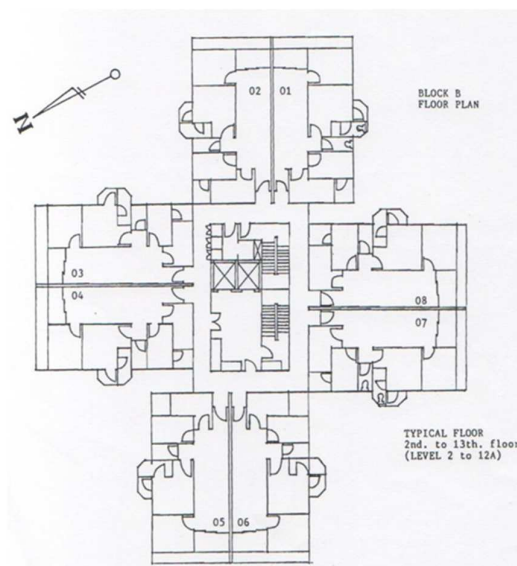
XXV International Federation of Surveyors  
Congress, Kuala Lumpur, Malaysia, 16 – 21  
June 2014

# Two (2) double sandwich blocks link by a single slab block



XXV International Federation of Surveyors  
Congress, Kuala Lumpur, Malaysia, 16 – 21  
June 2014

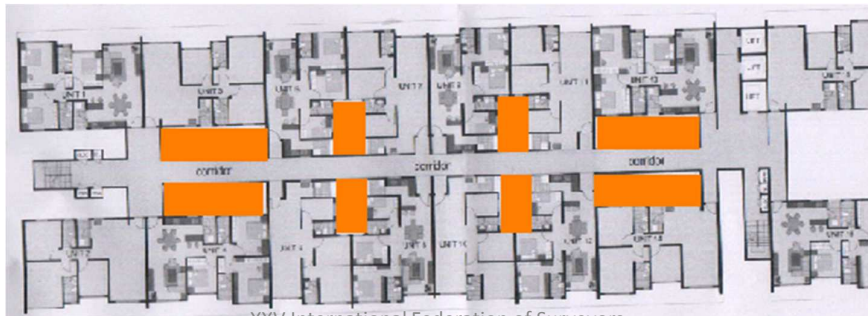
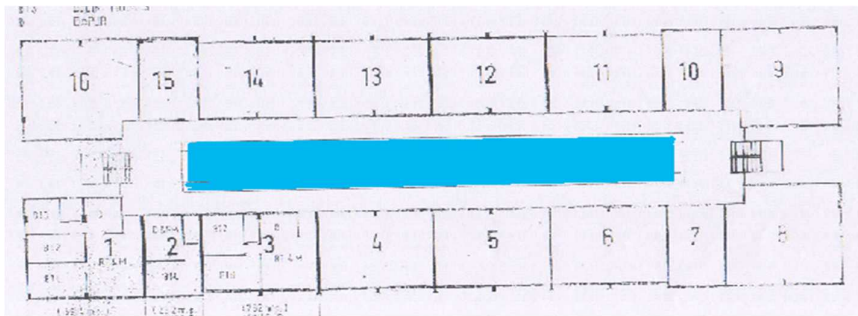
# Single Point or Tower Block



XXV International Federation of Surveyors  
Congress, Kuala Lumpur, Malaysia, 16 – 21  
June 2014

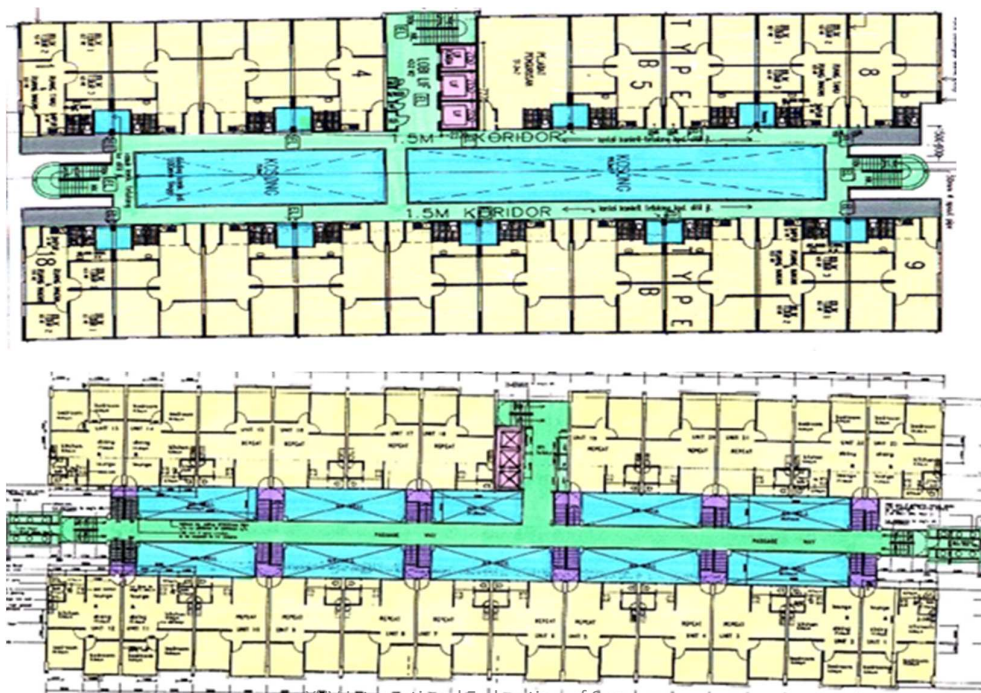


# Double sandwich block with variation air wells shown



XXV International Federation of Surveyors  
Congress, Kuala Lumpur, Malaysia, 16 – 21  
June 2014

# Typical double sandwich block with variation of common air wells as shown



XXV International Federation of Surveyors  
Congress, Kuala Lumpur, Malaysia, 16 – 21  
June 2014

# Double sandwich blocks with alternatives air wells



XXV International Federation of Surveyors  
Congress, Kuala Lumpur, Malaysia, 16 – 21  
June 2014

# Typical External façade of double sandwich blocks with common air well



XXV International Federation of Surveyors  
Congress, Kuala Lumpur, Malaysia, 16 – 21  
June 2014

## Typical facade of single block with common corridors fronting along the units apartments



XXV International Federation of Surveyors  
Congress, Kuala Lumpur, Malaysia, 16 – 21  
June 2014

## Typical methods of drying laundries in Msia residential high rise



XXV International Federation of Surveyors  
Congress, Kuala Lumpur, Malaysia, 16 – 21  
June 2014

# Pictures of common air wells where laundries are dried



XXV International Federation of Surveyors  
Congress, Kuala Lumpur, Malaysia, 16 – 21  
June 2014

# Pictures of common air wells where clothes are dried.



XXV International Federation of Surveyors  
Congress, Kuala Lumpur, Malaysia, 16 – 21  
June 2014

# Variations of hanging laundries are dried in common air well



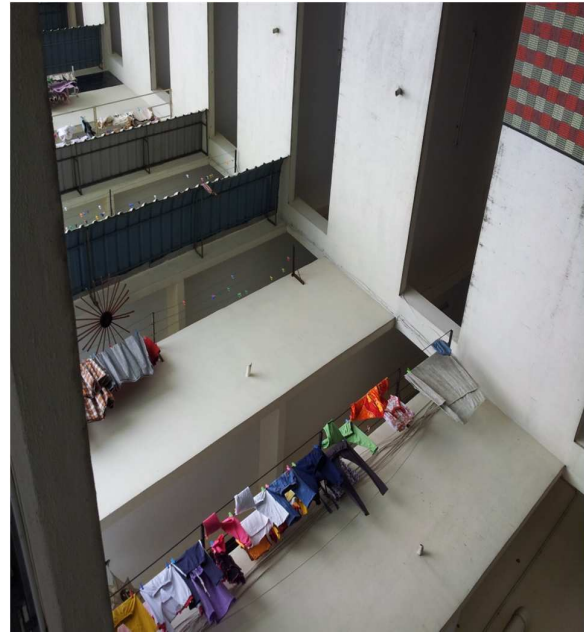
XXV International Federation of Surveyors  
Congress, Kuala Lumpur, Malaysia, 16 – 21  
June 2014

# Common corridors especially end lots hanging laundries are fully exposed at the main entrance of the units



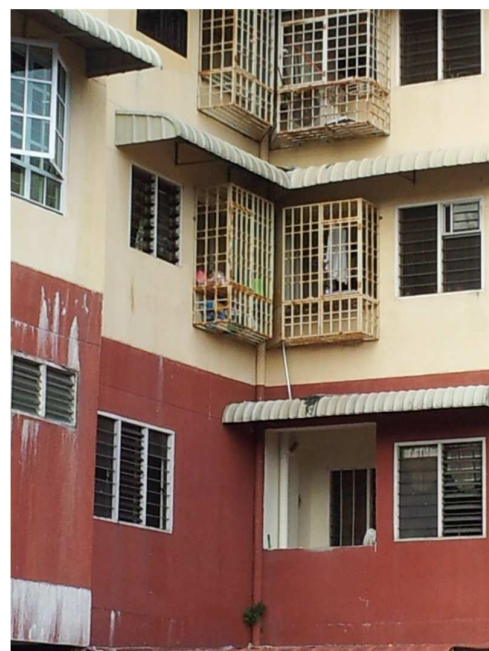
XXV International Federation of Surveyors  
Congress, Kuala Lumpur, Malaysia, 16 – 21  
June 2014

# Typical hanging laundries along the common air well.



XXV International Federation of Surveyors  
Congress, Kuala Lumpur, Malaysia, 16 – 21  
June 2014

# Single Point or Tower Block façade where laundries are dried in grille cages



XXV International Federation of Surveyors  
Congress, Kuala Lumpur, Malaysia, 16 – 21  
June 2014

Various types of hanging laundries been used due to lack of control by the authorities



XXV International Federation of Surveyors  
Congress, Kuala Lumpur, Malaysia, 16 – 21  
June 2014

Singapore context - External Façade where laundries are dried in HDB housing



XXV International Federation of Surveyors  
Congress, Kuala Lumpur, Malaysia, 16 – 21  
June 2014

Hanging flag poles are exposed but orderly located in high rise residential housing Singapore



XXV International Federation of Surveyors  
Congress, Kuala Lumpur, Malaysia, 16 – 21  
June 2014

Why there are no concerted effort by all the authorities in power to overcome this common phenomenon?

. Is it because M'sia is blessed with eternal summer since clothes can be dried easily without much effort?

. Is drying area or dry yard are least importance compare with other areas thus an after thought design?

. Or is it the land cost a deterrent factor?

Across the causeway it has proven otherwise.

XXV International Federation of Surveyors  
Congress, Kuala Lumpur, Malaysia, 16 – 21  
June 2014



The Missing Link or “Hanging Laundries Syndrome” will persist even with the current trend & development if no effort to resolve this simple & essential space. A beautiful princess will eventually become an ugly duckling without resolving basic essential space ie the drying area..



XXV International Federation of Surveyors  
Congress, Kuala Lumpur, Malaysia, 16 – 21  
June 2014