

Dublin's bid to host **FIG Working Week 2019**



Dublin
CONVENTION BUREAU



PROMOTING DUBLIN AS A WORLD
CLASS BUSINESS DESTINATION



Custom House Dublin



CONTENTS

2	MOTIVATION FOR THE BID	43	ACCOMMODATION
8	LETTERS OF SUPPORT	46	SUSTAINABILITY
17	LOCAL ORGANISING COMMITTEE	49	SOCIAL PROGRAMME
21	AGENCY ASSISTANCE	55	TECHNICAL TOURS
23	DUBLIN AS A CONFERENCE DESTINATION	58	PRE & POST CONFERENCE TOURS
28	ACCESS	62	DUBLIN – CITY OF LIVING CULTURE
31	BUDGET	66	GOLFING IN IRELAND
34	PROPOSED VENUE: THE CONVENTION CENTRE DUBLIN	68	MAPS



MOTIVATION FOR THE BID

Four Courts Dublin

MOTIVATION FOR THE BID



The motivation for the Irish bid comes on a number of levels. The Society of Chartered Surveyors Ireland, as the national association representing members across the surveying disciplines, has in recent years developed rapidly and reorganised into a vibrant professional body, with over 5,500 members, playing an active role in national development.

Ireland has a long and notable history of surveying and measurement from the carefully aligned network of hill-top monuments constructed over 5,000 years ago, to the completion of the world's first large-scale national mapping in the mid nineteenth century and, in the last decade, the National Seabed Survey that ranks amongst the largest marine mapping programmes undertaken anywhere in the world. Meanwhile, Ireland has one of the most open economies in the world and most of the major international IT companies have established bases in Ireland. At the same time, young Irish graduates can be found bringing their skills and enthusiasm to all corners of the world and, in many cases, returning home enriched professionally and culturally by their time abroad.

Ireland indeed operates beyond boundaries and yet Ireland has never hosted a major FIG event. It is the hope of the organising committee that this will be set right by the hosting of the 2019 Working Week through which the profile of surveying will be enhanced both at home and abroad.

New Initiatives

Intergenerational initiatives

The challenge of attracting students and young professionals into the FIG global community remains an issue for all surveying professionals. At the FIG Working Week in Ireland the 'Beyond Borders' theme aims to contribute to this challenge and enhance the intergenerational involvement of all surveyors. The power of the personal will be harnessed and developed through a mentoring system aimed at empowering young surveyors. Experienced members of the surveying community will lend their expertise via mentoring sessions with young surveyors, thus establishing a personalised professional platform upon which meaningful networking in the surveying community can be developed.

Marine sector

The marine sector is of increasing importance worldwide for both environmental and developmental purposes. Ireland has developed a strong track record the marine sector through initiatives like the National Seabed Survey wherein an area 10 times the land area of the country has been mapped and the flora and fauna recorded. Accordingly, the marine sector will form an important thread, within the 'Beyond Borders' theme, throughout the Working Week in terms of the technical programme, the plenary sessions and the exhibition.





FIG – Irish Legacy

Geographically, Ireland is at the gateway to Europe. Economically, Ireland is in the process of recovery from the world recession. Professionally, Ireland is at the forefront of innovation and technological advancement.

Our vision to host the FIG working week 2019 would enable us to maximise the opportunity to go Beyond Borders – geographically, economically and professionally.

As the gateway to Europe, we recognise there is an opportunity to invite our North American colleagues to avail of our proximity and encourage their involvement in FIG and in our surveying community globally.

Economically, we believe that we can offer a competitive package to delegates, and an event that would leave a lasting impression both professionally, socially and culturally.

Professionally, we recognise that many of our young professional surveyors have gone Beyond Irish Borders to secure employment and we want to ensure their awareness of our belief in them, and that they will return and share their expertise with us. Our objective to impart knowledge to young surveyors through our mentoring sessions and intergenerational campaign, aims to ensure their participation in the global surveying profession that is represented by FIG.

Ireland is known for its generosity and spirit and our Local Organising Committee's legacy aspiration is that the FIG Working Week Dublin 2019 will be known as the place to be for every professional surveyor, and one which will be recalled as one of the best. It is our ambition and we are committed to making it a success.

Bid Summary

Dublin is delighted to submit this document as its formal bid to host the 2019 FIG Working Week.

Dates

If our bid is successful, we propose hosting the 2019 Fig Working Week over one of the following sets of dates:

29 April - 3 May 2019

17-24 May 2019

24-28 June 2019

Proposed Venue

The Convention Centre Dublin

Host Organisation

The Society of Chartered Surveyors Ireland.



FIG Working Week – Conference Theme

'Beyond Borders' reflects an aspiration towards a more inclusive surveying world.

Ireland offers a good example of where, and how, this aspiration can be realized and may serve as template for other. The realization of the Beyond Borders theme in Ireland includes:

- Politically, there is a very close collaboration between the National Mapping Organisations on the island of Ireland and the National Mapping Organization in Great Britain.
- Socially, Irish graduates, with their enthusiasm and knowledge, can be found in all corners of the world while their peers are made welcome in Ireland, one of the most open economies in the world.

- Scientifically, Beyond Borders is exemplified in Ireland by the high profile of both the terrestrial and the marine surveying sectors, and the research underway to seamlessly merge those sectors.

The proposed theme will also be extended to the integration of Young Surveyors in activities with their more mature peers during the Working Week and the special efforts to be made to facilitate attendance by our fellow surveyors in both Africa and North America.





LETTERS OF SUPPORT

Government Buildings Dublin

28 November 2014

Ms Pauline Daly
SCSI President
Society of Chartered Surveyors Ireland
38 Merrion Square
Dublin 2

Dear Ms. Daly

The Department of Transport, Tourism and Sport is responsible for supporting the growth of a competitive and sustainable tourism industry and is delighted to support the Society of Chartered Surveyors in its bid to host the International Federation of Surveyors (FIG) Working Week in Dublin in 2019.

As Minister for Transport, Tourism and Sport I am particularly pleased that Dublin and Ireland will be showcased on an international arena, highlighting the excellent conference and meeting facilities that are available in the city. I am confident that Dublin will prove to be an excellent location to ensure memorable and successful events for this prestigious conference. Please be assured of the full support from my department through the Business Unit of Fáilte Ireland.

I look forward with interest to the outcome of your bid.

Yours sincerely



Paschal Donohoe, T.D.
Minister for Transport, Tourism and Sport



Ardmhéara Bhaile Átha Cliath
Lord Mayor of Dublin
Christy Burke

Pauline Daly,
SCSI President,
Society of Chartered Surveyors Ireland,
38 Merrion Square,
Dublin 2,
Ireland

24th November 2014

Re: FIG Working Week Conference 2019

Dear Pauline,

I am delighted to support your bid to host the FIG Working Week Conference in 2019. Dublin has played host to numerous prestigious conferences and events in the past and has a very successful track record in this area.

Dublin would be an excellent choice for this international conference. It is an accessible destination and offers high level city infrastructures, world-class selection of service providers, entertainment and activities that will help ensure delegates a very pleasant stay. Dublin is an historical, cultural and literary capital of Europe and is a vibrant city to visit. I have no doubt that Dublin is the ideal location for your conference.

I look forward with interest to the outcome of your bid.

Yours sincerely,

Christy Burke
Lord Mayor of Dublin

Ms. Pauline Daly, FRICS, FSCSI,
President,
Society of Chartered Surveyors Ireland,
38 Merrion Square,
Dublin 2,
Ireland.

24th November 2014

Dear Ms. Daly,

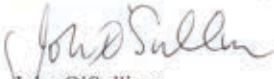
I am delighted to learn of your bid to host the 2019 FIG Working Week in Dublin.

Ireland has, of course, hosted many important international education and related conferences with great success in the past and I have no doubt that a large and prestigious event such as the FIG Working Week can be held here with an excellent outcome for participants.

This is a most welcome initiative for the surveying profession in Ireland. I look forward with interest to the outcome of your application and wish you every success with your bid.

If I can be of further assistance, please do not hesitate to contact me.

Yours sincerely,



John O'Sullivan
Commissioner of Valuation

Suirbhéireacht Gheolaíochta Éireann
Tor an Bhacaigh
Bóthar Haddington
Baile Átha Cliath 4



Geological Survey of Ireland
Beggars Bush
Haddington Road
Dublin 4
Tel. +353 1 6782000
Direct +353 1 6782798
Fax. +353 1 6782579
<http://www.gsi.ie>
Email: archie.donovan@gsi.ie

To Whom It May Concern

RE: Bid to host the FIG International Working Week in Dublin during 2019

24th November 2014

Ms. Pauline Daly, FRICS, FSCSI,
President,
Society of Chartered Surveyors Ireland,
38 Merrion Square,
Dublin 2, Ireland

Dear Ms Daly,

It is with very considerable interest that we, in the Geological Survey of Ireland (GSI), learned of your bid to host the 2019 FIG Working Week in Dublin.

As a European capital city conference destination, Dublin rates highly on delegate experience and overall cost of attendance.

Please be assured that you and your colleagues have the GSI's full support in your application to host the event in 2019.

Of the ten FIG commission's lead technical work areas, the GSI would see itself as having an interest in professional practice and standards development in the majority, if indeed, all of these areas.

We look forward with interest to the outcome of your bid.

Yours sincerely,

Principal Geologist,
Yours faithfully,

Archie Donovan BSc (Comp), MSc (Soft Eng), MSc (GIS)
Joint INFOMAR Project Manager



Department of Communications, Energy and Natural Resources Roinn Cumarsáide, Fuinnimh agus Acmhainní Nádurtha

26 November 2014

Ms. Pauline Daly. FRICS, FCSI
President
Society of Chartered Surveyors Ireland
38 Merrion Square
Dublin 2
Ireland

RE: Bid to host the 2019 FIG Working Week in Dublin

Dear Ms. Daly,

I was very pleased to learn of the Society of Chartered Surveyors Ireland's bid to host the 2019 FIG Working Week in Dublin.

As Chief Executive of Ordnance Survey Ireland (OSi), the Irish national mapping agency, I am delighted to offer my full support in the bid for Dublin as the proposed venue for the 2019 FIG Working Week.

With OSi's proud history of 190 years of surveying and national mapping, OSi will assist in any way possible to ensure that the FIG Working Week in Dublin in 2019 is a resounding success.

If I can be of further assistance, please do not hesitate to contact me.

Yours sincerely,



Colin Bray
Chief Executive Office
& Chief Survey Officer
Ordnance Survey Ireland



26 November 2014

Pauline Daly, President,
Society of Chartered Surveyors Ireland,
38, Merrion Sq.,
Dublin 2,
Ireland.

Dear President,

It is with very considerable interest that I learned of your bid to host the 2019 FIG Working Week in Dublin.

The Royal Institution of Chartered Surveyors is more than confident that this important and prestigious global event would be effectively managed by the local organising committee and would be a great success if held in Dublin.

Please be assured that you and your colleagues have our professional group support and the support of the RICS FIG delegation.

I look forward with interest to the outcome of your bid.

Yours Sincerely

A handwritten signature in black ink, appearing to read "James Kavanagh".

James Kavanagh BSc(Hons) MRICS C.Geog MCInstCES
Director Land Group (Geomatics, Environment, MWM, Rural, P&D, Telecoms)
Tel: 0044 (0) 207 695 1598
Email: jkavanagh@rics.org
Web: <http://www.rics.org/LAND>



An tÚdarás Clárúcháin Maoine
The Property Registration Authority

23rd November 2014

Ms. Pauline Daly,
President, Society of Chartered Surveyors Ireland,
38 Merrion Square,
Dublin 2

Dear Ms. Daly,

It is with very considerable interest that I learned of your bid to host the 2019 FIG Working Week in Dublin. Both the Chief Executive, Frank Treacy and I see this as a great opportunity for the wider GI community within Ireland.

As you know Ireland has hosted many important education related conferences with great success in the past and I am confident that the important and prestigious event can be held here with results that can satisfy all expectations.

Please be assured that you and your colleagues have our full support from the Property Registration Authority

I look forward with interest to the outcome of your bid.

Yours sincerely,

Greg Mc Dermott
Deputy Registrar Corporate Affairs

SUPPORT FROM DUBLIN FOR THE CONFERENCE

This bid is being supported by the Department of the Taoiseach, Fáilte Ireland (the National Tourism Development Authority), the Lord Mayor of Dublin, Dublin Convention Bureau and the Irish industry suppliers. We will work with FIG to ensure that the 2019 FIG Working Week is a resounding success in terms of delegate experience.

Dublin Convention Bureau

Dublin Convention Bureau will support FIG through a number of direct services:

- Hosted site inspection to view venues and logistics for the conference.
- Marketing support for the promotion of the conference to maximise your delegate attendance.
- Visitor maps and information to ensure your delegates can make the most of their time in Dublin when not in conference.
- Tourist information desk on first day of conference.
- Discounted Dublin Pass – the official city sightseeing card.



Financial Support

Fáilte Ireland, Ireland's National tourism Authority, will offer FIG Working Week financial support of €10 per international delegate for the first 999 delegates attending and €20 per international delegate for each delegate over 1000 pax.



LOCAL ORGANISING COMMITTEE

Trinity College Dublin

LOCAL ORGANISING COMMITTEE



Dr. Eugene McGovern FCSI FRICS

Dr. Eugene McGovern is a Chartered Surveyor and lecturer at the Dublin Institute of Technology in the area of Geomatics. He previously worked internationally as a Land Surveyor before coming a director of a commercial survey company in Ireland. He holds a PhD from University College Dublin in satellite image processing. He is a committee member of the Society of Chartered Surveyors Ireland Geomatics Professional Group and is the RICS representative on FIG Commission 5.



Colin Bray

Colin Bray is Chief Executive Office and Chief Survey Officer of Ordnance Survey Ireland, the Irish national mapping agency. Colin is a highly experienced leader with a solid understanding of change management, relationship management, surveying, mapping and technology gained over twenty years. Colin is a member of the Irish Public Service CIO Council and a Director of EuroSDR (European Spatial Data Research organisation), having served as President of Commission 4 on Core Geospatial Databases. Colin is a Chartered Geomatics Surveyor and has been an external examiner for the Dublin Institute of Technology.



Dr. Audrey Martin FCSI FRICS

Audrey is an academic in the School of Surveying and Construction Management in DIT and chairs the MSc in Geospatial Engineering. Her main area of expertise and research are in Global Navigation Satellite Systems (GNSS) and Geodetic Surveying. Within this field she recently successfully supervised two consecutive winners of the Trimble Dimensions Student Paper. In the past Audrey was awarded a DIT Teaching Fellowship and won a number of a DIT Teaching Excellence awards. She is a past Chair of the Geomatics Professional Group of the Society of Chartered Surveyors Ireland (SCSI) and has also served on the Royal Institution of Chartered Surveyors (RICS) International Faculty Board. She remains an active member of the Geomatics Professional Group. Audrey has attended and published at many FIG Congresses and Working Weeks since 2003 and currently acts as an academic reviewer for FIG.



Niamh O'Reilly

Niamh O'Reilly is a chartered Geomatics Surveyor and is currently the chairperson of the Geomatics professional group in the Society of Chartered Surveyors Ireland (SCSI). She lectures at the School of Surveying and Construction management, DIT where her areas of expertise include Geographical Information Sciences, WebGIS, land information management and geodetic surveying. Niamh is the corresponding representative for SCSI/RICS on FIG commission 7 – Cadastre and land management. She is also a member of the SCSI Education standing committee and SCSI APC committee. Currently Niamh is part of a number of working groups looking at developing best practise guidelines for right to light in Ireland and also developing best practice guidelines for the preparation of SEAs/AAs for the energy sector in Ireland



Fiona Barron

Fiona Barron is Director of Innovation & Business Development in the Society of Chartered Surveyors Ireland. Fiona originally qualified and worked in the property sector and is a Member of the SCSI. She holds an MBA from the Smurfit School of Business and has many years' experience in business development in the private, and not for profit sectors. The Innovation & Business Development Department is responsible for Society events and sponsorship, as well as liaison with the SCSI regions.



Valerie Bourke

Valerie Bourke is Events Officer with the Society of Chartered Surveyors Ireland. Valerie has many years' experience in event management, having co-ordinated all national and regional events for the Society over the past 24 years including national conferences; dinners, social events and overseas trips.



Previous professional events organised by The Society of Chartered Surveyors Ireland (SCSI)

The Society of Chartered Surveyors Ireland (SCSI) has co-ordinated our annual national and regional events for many years. These national events have included our Annual Dinner which was attended by in excess of 1200 in February this year; our Annual Conference which was attended by c. 500 delegates in October of this year as well as many other regional forums and events. We have held events in many of the city's top venues, including the Dublin Convention Centre. The SCSI is a member of CEPI – the European Council of Real Estate Professions – and this month, we are hosting its annual general assembly in Dublin, for which we have organised interpretative facilities and social activities, as well as hosting CEPI's working schedule.

Events organisation in the society is a key element of our operations and is managed by the Innovation and Business Development Department.



SCSI Southern Region Annual Dinner 2014



AGENCY ASSISTANCE

AGENCY ASSISTANCE



Dublin Convention Bureau assisted the local organising committee with introductions to Destination Management Companies (DMC's), venues and professional suppliers. Only those who fulfil certain criteria and qualify for inclusion in Fáilte Ireland's approved list of suppliers are promoted.

Dublin Convention Bureau

The Dublin Convention Bureau (DCB) is an essential point of contact for any international conference or meeting planner who is considering the City for their future business. It provides expert advice, updates on new developments, a free venue finding service, and assistance with site inspections and organisation of familiarisation trips. It also supports liaison with local service providers, provides assistance with bids for international meetings, helps sourcing of endorsement and local support, has a conference ambassador programme, and can help to build delegate attendance at conferences. DCB does not charge any fee or commission on any service and is, in essence, your one stop shop for Dublin!

Contact details

Ciaran McLoone

Dublin Convention Bureau

Fáilte Ireland

88-95 Amiens Street

Dublin 1

Tel: +353 1 8847271

Web: www.dublinconventionbureau.com

Email: cmcloone@dublinconventionbureau.com



Event Partners Profile

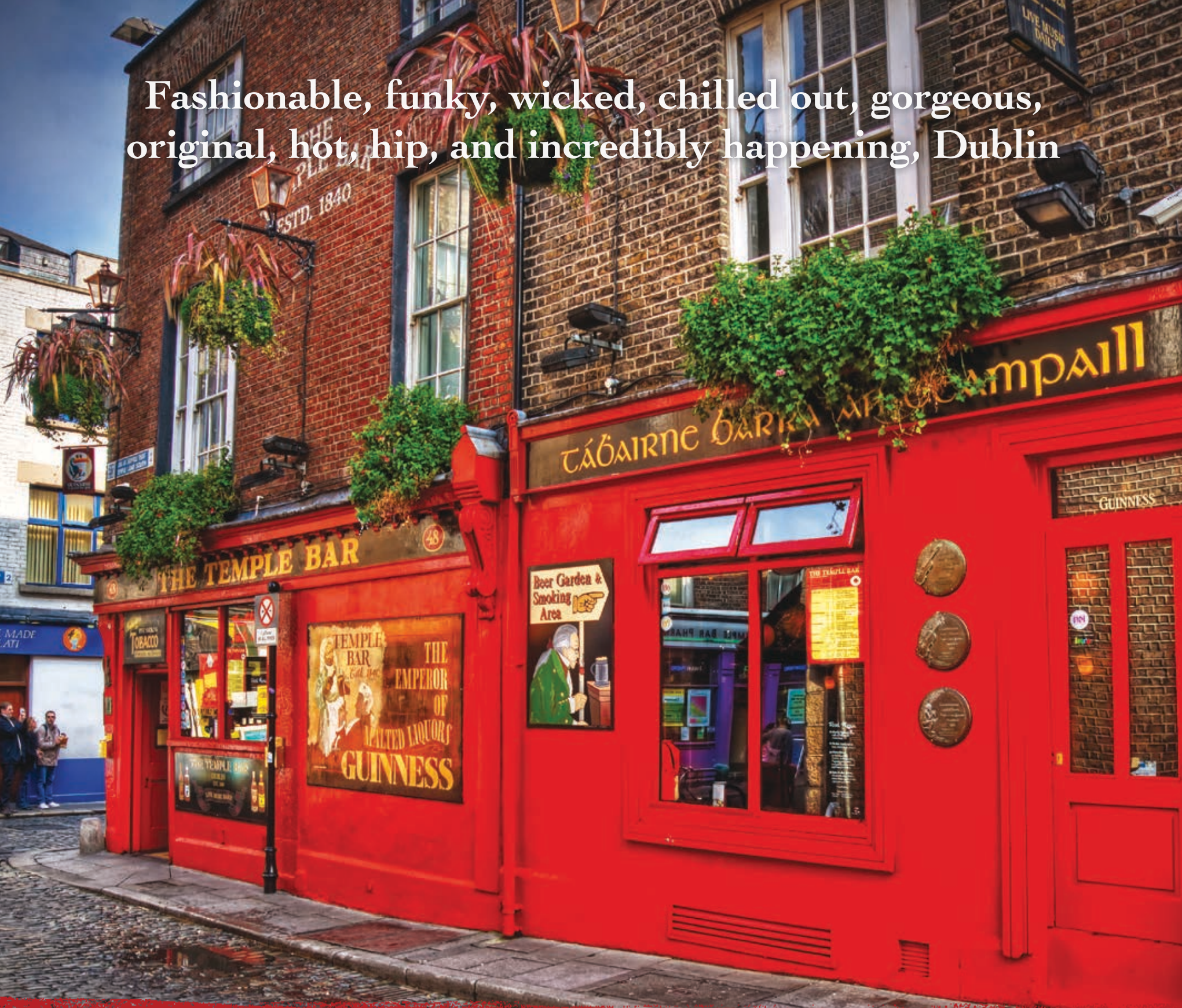
Event Partners DMC is a driving force of originality, unrivaled service and seamless delivery. Founded in 1998, their multilingual in-house team of experts are supported by the brightest and most brilliant guides in the country. Event Partners think differently. With their pioneering knowledge of captivating experiences, you will see Ireland through fresh eyes.

Event Partners have the contacts and purchasing power to deliver the best that the market has to offer. With flair and enthusiasm they source venues, negotiate with hotels and suppliers, arrange airport greetings and provide luxury transportation.

Event Partners deliver inspiring team-building activities, memorable welcome receptions, glamorous gala dinners and dazzling entertainment. With Event Partners, cutting edge meets old-school, methodical meets free spirited and hard work meets fun times!

Event Partners are very much looking forward to working with the Local Organising Committee and the FIG International Office should Dublin be successful in its bid to host the FIG Working Week 2019.

Fashionable, funky, wicked, chilled out, gorgeous, original, hot, hip, and incredibly happening, Dublin



DESTINATION DUBLIN

*The Temple Bar Pub Dublin, winner of the
Irish Music Pub of the Year for 2002 to 2012*

DUBLIN AS A CONFERENCE DESTINATION

What Dublin has to offer

Dublin is an exciting and inspirational city eager to extend a warm welcome to business tourists from across the globe. Scoring high on essential criteria such as suitability, accessibility, facilities and service, Dublin delivers in its own inimitable way.

Captivating experience

Dublin is a breath of fresh air, a truly unique capital that's steeped in tradition yet young at heart. In the historic, compact city centre there is lots to do and see, and visitors will love the rich selection of galleries, national museums which have free entry, restaurants, pubs and shops, not to mention the traditionally warm welcome from Dubliners.

Traditionally high visitor turnout

World-renowned for our warm welcome and genuine sense of fun, the Irish people's enviable passion for life promises to entice colleagues and peers from around the globe, guaranteeing high attendance at any international event.

Easy access

Ireland, ideally located on the edge of Europe, is less than an hour from London, less than two hours from Paris or Brussels and just five hours from the east coast of the US by air. Dublin airport is the 11th largest in Europe in terms of international traffic, which has more than 170 destinations served by 55 scheduled airlines. A brand new

terminal opened in 2010, increased its capacity to well over 30 million passengers a year. It is only 12km from the city centre and is served by bus and taxi taking less than 20 minutes to get to the city centre.

Conference Accommodation

Dublin now boasts world class hotels providing top quality accommodation. The capital offers over 160 hotels with just over 18,000 beds, all approved by Fáilte Ireland – The National Tourism Development Authority. Hotels range in price from the luxury 5 star experience to more affordable budget accommodation. Visitors can choose either city-centre hotels within walking distance or hotels in the leafy suburbs of Dublin which can be easily accessed by bus, tram, train or taxi.

Local Transportation

Dublin city itself is small, compact and is tailor-made for carefree exploring by foot. It also has an excellent transport system, which includes an urban rail system (DART), a stylish new tram network (LUAS) and an extensive city/countrywide national train and bus service. A universal public-transport access card is available allowing delegate's access to all parts of the city by bus, DART or Luas. Taxis are plentiful and reasonably priced by international standards.



Entry (Visa) Requirements

All visa applications are now made on-line using the AVATS on-line facility. www.dfa.ie Citizens of certain countries require a visa to travel to Ireland. Applicants should note that all non-EU citizens, whether a visa is required or not, will be subject to ordinary immigration controls at the port of entry.

Dublin Convention Bureau will work closely with FIG, the local organising committee and the Department of Foreign Affairs to ensure that Visa applications are processed efficiently.

Do I need a Visa to come to Ireland?

Visas are not currently required by EU Nationals, EFTA Nationals or USA, Canadian or Australian nationals, visitors are required to have a valid passport. Information on nationalities requiring a VISA may be obtained from any Irish Embassy or Irish Tourist Office.

VAT

Vat registered organisations can also reclaim VAT on accommodation costs for their participants.

Tax Benefits

Non-EU residents are entitled to reclaim the VAT paid on items purchased and taken home with them.

Destination Cost of Living

Ireland's cost of living has improved compared to the European Union in each year since 2008.

Prices fell outright in 2009 and 2010 and inflation since then has run at approximately half the level of the EU.

These competitiveness gains are reflected in the latest UBS Prices and Earnings Report which shows Dublin dropping to the 23rd most expensive city surveyed.

Dublin compared well in terms of price of service, price of city breaks, hotels and restaurants and clothing.

Examples of Destination Cost of Living

- Coffee in a Typical Café: **€2.50-€3.00**
- 50cl bottle of mineral water: **€1.20**
- Sandwich: **€3.50-€4.00**
- Typical Meal Cost (including drink): **€15-€20**





A Safe, Welcoming City

Public Safety

Dublin is a safe and welcoming city. The city is one of the friendliest in Europe and maintains a relaxed and welcoming atmosphere.

Communication

English is the main spoken language.

Currency

In keeping with the majority EU Members, Ireland has adopted the euro as its national currency, so making it an attractive destination for most EU delegates.

Enduring appeal

The number of international companies choosing Ireland as their first choice destination to stage their annual conference, business meeting, or incentive is growing year on year, with many returning again and again.

Political Situation

Dublin is a safe and welcoming city with a strong, stable economy. The Republic of Ireland is a parliamentary representative democratic republic. The present government is a coalition of Fine Gael (a centre right to centrist party) and the Labour Party. The state operates under the Constitution of Ireland, which falls within the Liberal Democratic

tradition. The Head of State is the President with a mainly ceremonial role. The Parliament of Ireland (Oireachtas) consists of the President, the Dáil and the Senate.

Diplomatic relations of Ireland are substantially influenced by its membership of the European Union, although bilateral relations with the US and the UK are also very important to Ireland. It is one of a group of smaller nations in the EU and has traditionally pursued a non-aligned foreign policy. Ireland tends towards independence in foreign policy, is not a member of NATO and has a long-standing policy on military neutrality. Ireland is consistently the most pro-European of EU member states, and is a founder member of the euro currency. Ireland has diplomatic relations with 161 foreign governments. The Irish government has 74 missions across the world including 55 embassies.

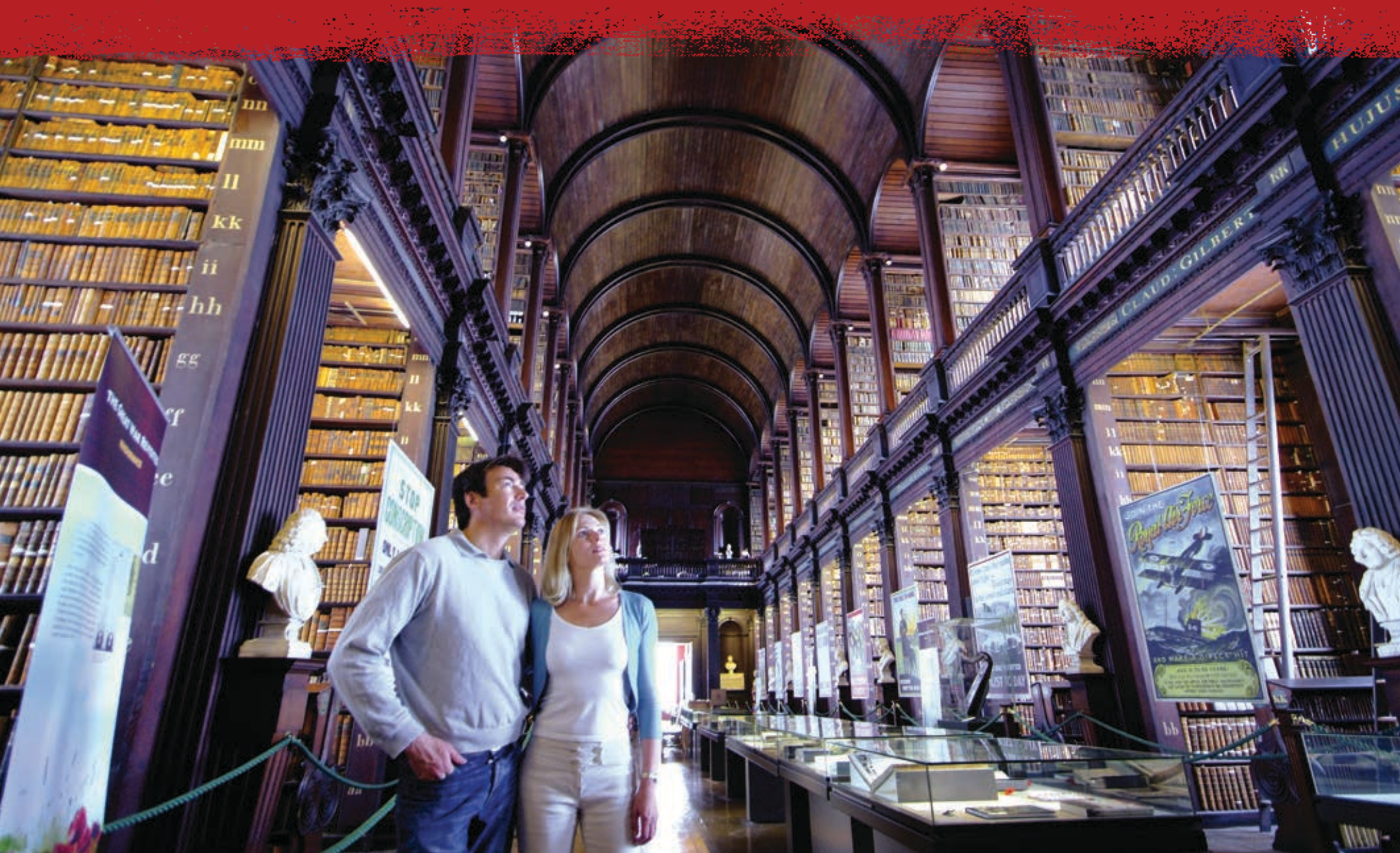
Ease of doing business


The 2008-2012 Business Environment Ranking of the Economist Intelligence Unit placed Ireland 11th globally out of 82 countries, naming it as one of the most attractive business locations in the world. Furthermore, Forbes 2011 named Ireland as the best country in Europe in which to do business.

*“For Dublin can be heaven
With coffee at eleven
And a stroll in Stephen’s Green
There’s no need to hurry
There’s no need to worry
You’re a king and the lady’s a queen
Grafton Street’s a wonderland
There’s magic in the air*

*There’s diamonds in the lady’s eyes
And gold-dust in her hair
And if you don’t believe me
Come and meet me there
In Dublin on a sunny Summer morning”*

**From the “Dublin Saunter”,
made famous by the Irish actor Noel Purcell**





Modern, forward thinking, effective, efficient, fast,
comfortable, friendly, safe, enjoyable, informative



*The LUAS tram system connects Dublin
city centre with the suburban areas*



ACCESS

Dublin Airport

Dublin Airport is one of Europe's busiest airports, with 57 airlines flying to over 175 destinations. Dublin Airport now offers services to over 30 airports in the UK and the ever expanding European network – now more than 100 airports.

Dublin Airport manages an average of 60,000 passengers per day, rising to 80,000 during the peak season, with more than 600 aircraft movements every day.

Some Facts about Dublin Airport

- Dublin Airport is located 12km north of Dublin city centre
- Dublin Port Tunnel cuts journey time from the airport to the city centre, to 12-15 minutes.
- Private/public bus services that operate from the airport: **Aircoach, Airlink.**
- Taxis are readily available for hire outside the airport (a taxi journey into the city centre from the airport should cost approximately €25).
- Most international car rental companies also have representation in the airport terminal.
- Check-in capacity of 165 desks.

Dublin Ferry Ports

Even though Ireland is an island, access is easy by air or sea. Passengers arriving in Dublin have a choice of two disembarkation points, depending on which ferry company they use. Dublin Port is very centrally located, only minutes from Dublin city centre. Dun Laoghaire is situated to the south of the city, about 30 minutes from the city centre. There are excellent ferry connections daily from the UK and mainland Europe.

Getting Around Dublin City

- Dublin is compact and easily '**walkable**'.
- Almost 10,000 **taxis**.
- **Buses:** Dublin Bus operates the city's bus routes running from 06:00-23:30.
- **Train:** DART, Suburban and Intercity Trains.
- **LUAS:** State-of-the-art Light Rail Transit System.

Public Transportation to Convention Centre

Bus: Typical bus journey from city centre to Convention Centre - 70c.

LUAS: Typical LUAS Journey Zone 1 - €1.80

Integrated Ticket for bus, train & LUAS - €10.00 (includes €5 credit). Delegate discounts will be made available.

Dublin City Bikes: 3 day ticket - €2.00

Taxi: Typical taxi fare from city centre to Convention Centre - €8.00

Airport

International Airport: Yes.

Average Distance from City Centre: 12km.

Means of Transportation: Bus, Taxi.

Average Cost Airport to City:

Dublin Bus Airport Transfer – €6.00 Single

Airport Taxi – €25.00

MAJOR AIRLINES

Getting to Dublin is increasingly easy and popular with many airlines such as Etihad, Emirates and United Airlines opening new routes in the last two years. With the emergence of low cost air-travel along with traditional international carriers it has never been easier or less expensive to travel to Dublin. ** Indicates Summer Season only





BUDGET

EXPENDITURE						Based on 800pax
	Cost	Units	VAT	Total EUR	Comments	
1. Print, Artwork & Design	7,100.00	1	23%	8,733	<i>Includes design managed by FIG and local print of Programme Book & Technical Programme Book</i>	
2. Marketing & Promotion	9,500.00	1	23%	11,685	<i>Includes website managed by FIG and provision for promotion at 2018 Congress Istanbul</i>	
3. FIG Site Visits	2,500.00	3	23%	9,225	<i>2pax x 3 visits</i>	
4. Conference Venue – The CCD				263,097	<i>Rental includes a number of technicians, in-house sound, lighting & staging, stewarding, security, in-house furniture, carpet in exhibition hall, free WiFi of 20MB bandwidth, some digital signage, traffic management and registration desk structures.</i>	
The Forum – Exhibition	15,143.00	4	23%	74,504		
The Liffey – Welcome Reception	0.00	1	23%	0		
The Auditorium – Opening Ceremony/Plenary	18,531.31	3	23%	68,381		
Liffey Hall 1 – Technical Session	3,802.19	3	23%	14,030		
Liffey Hall 1 – FIG President’s Meeting	3,802.19	1	23%	4,677		
Liffey Hall 2 – Technical Session	4,792.79	3	23%	17,685		
Liffey Meeting Room 1 – ACCO Meeting/ Commission Annual Meeting/Technical Session	1,532.88	5	23%	9,427		
Liffey Meeting Room 2 – Technical Session	2,556.36	3	23%	9,433		
Liffey Meeting Room 3 – Technical Session	1,917.01	3	23%	7,074		
Liffey Meeting Room 4 – Commission Meeting Room 1	391.44	5	23%	2,407		
Liffey Meeting Room 5 – Commission Meeting Room 2	391.44	5	23%	2,407		
Ecocem Room – Technical Session	1,917.01	3	23%	7,074		
Wicklow Meeting Room 1 – Technical Session	1,725.99	3	23%	6,369		
Wicklow Meeting Room 4 – Commission Meeting Room 3	391.44	5	23%	2,407		
Wicklow Meeting Room 5 – Commission Meeting Room 4	391.44	5	23%	2,407		
Liffey Boardroom 1 – Members Association Conference Office	229.64	7	23%	1,977		
Liffey Boardroom 2 – FIG President Meeting Room/Council Meetings	306.36	7	23%	2,638		
Liffey Boardroom 3 – Speaker Preview	384.13	3	23%	1,417		
Liffey B – General Assembly	229.64	7	23%	1,977		
Liffey B – General Assembly	8,946.24	1	23%	11,004		
Liffey B – General Assembly	8,946.24	1	23%	11,004		
Audiovisual	3,900.00	1	23%	4,797	<i>Additional 2 technicians for Speaker Preview and meeting rooms plus provision for fixed internet at Registration Desks</i>	

Presumptions

Time: Anytime between last week April and last week June 2019
Conference days: 29 April-3 May 2019/24 - 28 June 2019/17 - 24 May 2019
Venue: The Convention Centre Dublin (CCD)

Price Level: 2014 VAT Included
Currency: Euro (€)
Language: English

	Cost	Units	VAT	Total EUR	Comments
5. Social Events				140,551	
Welcome Reception – The CCD	25,160.00	1	9%&23%	28,824	<i>Drinks and canapes for 800pax</i>
Foundation Dinner – Old Jameson Distillery	30,090.00	1	23%	37,011	<i>Includes room hire, 3 course dinner, drinks, entertainment, transport and FIG Foundation Fee for 300pax</i>
Gala Dinner – Round Room at the Mansion House	35,560.00	1	23%	43,739	<i>Includes room hire, 3 course dinner, drinks, entertainment and transport for 320pax</i>
Farewell Reception – FIG Congress 2018 Istanbul	25,160.00	1	9% & 23%	28,824	<i>Provision for Farewell Reception at FIG Congress 2018 Istanbul based on drinks and canapes for 800pax</i>
Accompanying Person Half Day Tour	1,750.00	1	23%	2,153	<i>Half day city tour with coach and guide based on 50pax</i>
6. Participant’s Kit	6,850.00	1	23%	8,426	<i>Includes delegate bag and delegate badge w lanyard, pens and notepaper to be sponsored</i>
7. Catering - Daytime				122,472	
Grab & Go Lunchbag (General Assembly x 2)	10,360.00	2	9%	22,585	<i>Based on 800pax both days of General Assembly</i>
Tea, Coffee, Biscuits (Friday morning)	3,440.00	1	9%	3,750	<i>1x tea, coffee & biscuits break for 800pax</i>
Lunch Fork Buffet Package – incl tea, coffee, biscuits break, fork buffet lunch and sweet bites, tea, coffee break	28,400.00	3	9%	92,868	<i>Based on 800pax for three days of conference</i>
Provision for additional unspecified catering	3,000.00	1	9%	3,270	
9. Tours				0	
Technical tours	0.00	0	0	0	<i>No cost to conference as delegates pay own</i>
Social tours	0.00	0	0	0	<i>No cost to conference as delegates pay own</i>
10. Invited Guests/Complimentary Accommodation	39,686.90	1	23%	48,815	<i>Includes 100 complimentary registrations as per page 12 of FIG Bid Manual plus provision for FIG President and FIG Staff onsite accommodation x 10 nights. NOTE: 53 social complimentary tickets as per FIG Bid Manual have been accounted for in the Income section</i>
11. Display Materials	5,125.00	1	23%	6,304	<i>Includes branding for lecterns, registration desks, pull up signage etc</i>
12. Exhibition	17,650.00	1	23%	21,710	<i>Includes shell scheme x 30 booths and exhibition administration</i>
13. Abstracts	14,350.00	1	23%	17,651	<i>Managed by FIG - estimate based on 700 abstracts for budgetary purposes</i>
14. Registration Administration	47,375.00	1	23%	58,271	<i>Includes FIG Registration Management Fee of €35 per person based on 800pax, FIG Foundation Contribution of €10 per person based on 800pax and onsite staffing</i>
15. Sponsorship Administration	5,000.00	1	23%	6,150	
16. Conference Administration	49,349.47	1	23%	60,700	
17. Miscellaneous	890.00	1	23%	1,095	
TOTAL EXPENDITURE				784,883	

INCOME					<i>Based on 800pax</i>
	Registration Fee	Uptake	Total	Comments	
Delegates: Early	610.00	50%	244,000	Registration fee based on FIG WW 2015 fee plus 10%	
Delegates: Normal	710.00	25%	142,000	Registration fee based on FIG WW 2015 fee plus 10%	
Delegates: Late	770.00	23%	141,680	Registration fee based on FIG WW 2015 fee plus 10%	
Students	225.00	2%	3,600	Registration fee based on FIG WW 2015 fee plus 10%	
Accompanying persons	165.00	50	8,250	Registration fee based on FIG WW 2015 fee plus 10% by 50pax	
Invited Guests	0.00	100	0	100 complimentary registrations accounted for in Expenditure	
Total Registration Fee Income			539,530		
Sponsorship & Exhibition Income	Amount	Units	Total	Comments	
Exhibitors	3,000.00	30	90,000	Based on 30 exhibition booths	
Local sponsorship	50,000.00	1	50,000		
International sponsorship	80,000.00	1	80,000		
Faillte Ireland Grant	10.00	800	8,000		
Total Sponsorship & Exhibition Income			228,000		
Social events	Fee	Units	Total	Comments	
Foundation Dinner	95.00	247	23,465	53 complimentary tickets as per FIG Bid Manual have been included	
Gala Dinner	120.00	267	32,040	53 complimentary tickets as per FIG Bid Manual have been included	
Total Social Events Income			55,505.00		
TOTAL INCOME			823,035		

	Total	
SUMMARY 1		
<i>Based on 800pax</i>		
Total income	823,035	
Total expenditure	784,883	
RESULT 1	38,152	<i>Surplus</i>
SUMMARY 2		
<i>Based on 1000pax</i>		
Total income	957,855	
Total expenditure	847,376	
RESULT 2	110,479	<i>Surplus</i>
SUMMARY 3		
<i>Based on 1200pax</i>		
Total income	1,092,675	
Total expenditure	909,869	
RESULT 3	182,806	<i>Surplus</i>



PROPOSED VENUE: THE CONVENTION CENTRE DUBLIN

PROPOSED VENUE: THE CONVENTION CENTRE DUBLIN

Since opening its doors in 2010, The Convention Centre Dublin (CCD), has hosted nearly 1,000 events. This landmark building was designed by award-winning Irish architect Kevin Roche, and features a stunning glass fronted atrium running the full height of the building – giving visitors panoramic views of the River Liffey, Dublin city centre and the Wicklow mountains. Located in Dublin city centre, The CCD is at the heart of Dublin's transport hub with excellent air, road, rail and sea connections, meaning it is only minutes from the airport, motorway network, rail stations and ferry terminals. The CCD has won 25 major industry awards since opening in September 2010.

These awards include: "Best Overseas Conference Centre" and the prestigious "Access Excellence Award" at the M&IT Awards 2012, the latter being the first time the award was presented to an Irish venue. In addition to these 15 awards, The CCD has also been recognised as one of three runners-up at the AIPC Apex Awards 2012 for the coveted "World's Best Convention Centre" award, which is based on a detailed survey of at least 25 clients over the previous two years. Most recently The CCD won the Best Overseas Conference Venue at the prestigious C&IT Awards in London.

Venue at a Glance

- 22 Purpose-built meeting rooms
- 2,000 Seat Auditorium with full theatrical stage and fly tower
- 4,371 Square metres of exhibition space
- 3,000 Theatre capacity for delegates in The Forum
- 3,000 Guests catered for in our banqueting facilities
- 6 Spacious foyer areas – with stunning views of Dublin City, bay and mountains on upper foyer levels
- 2 Large cargo lifts including a truck container lift
- Cutting edge technology and wi-fi throughout
- Intimate boardrooms, large and small halls and meeting rooms
- The CCD is a venue like no other, with a range of 22 flexible meeting rooms and spacious foyers over 6 levels.



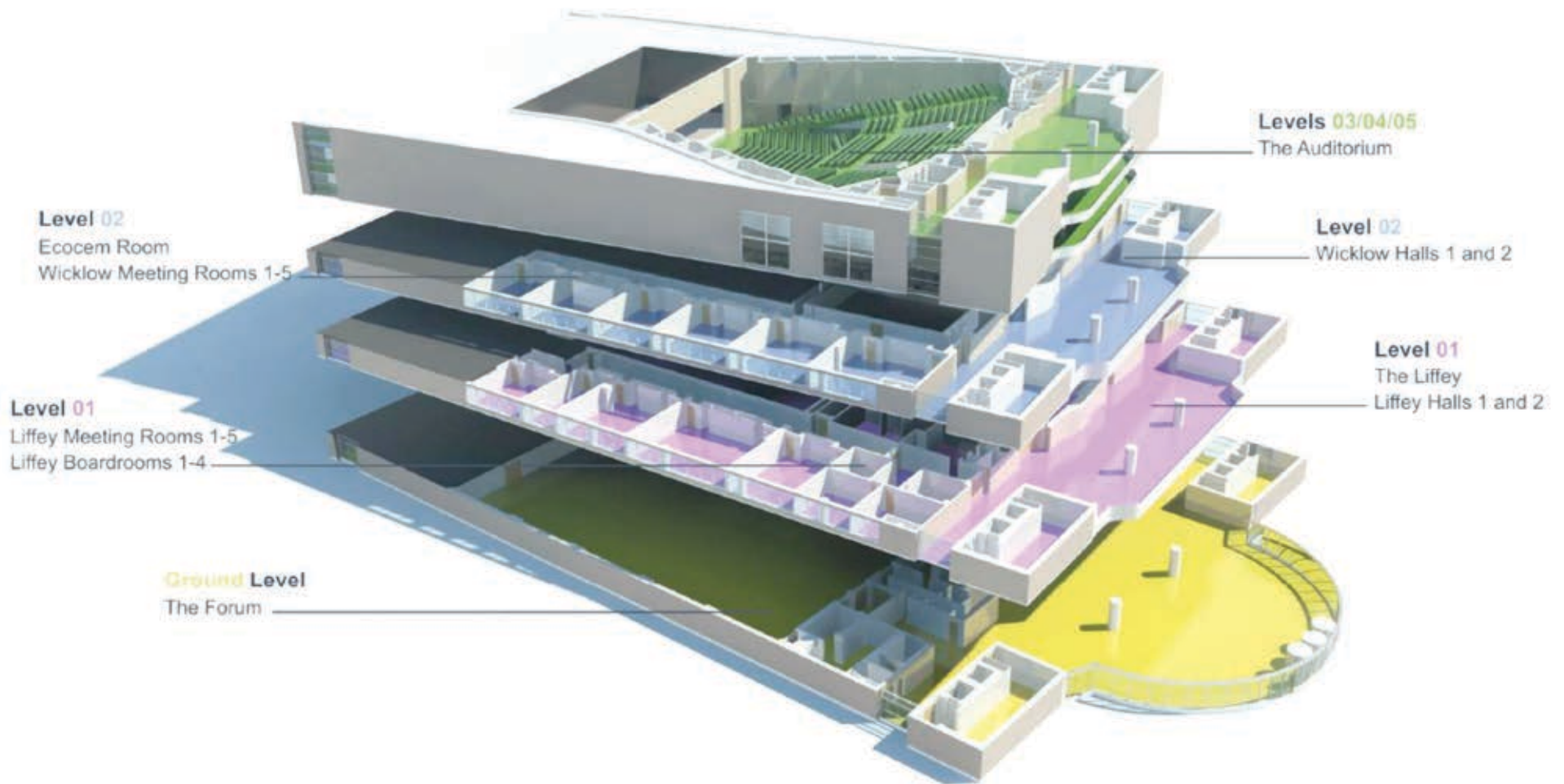
The Auditorium

Track Record

The Convention Centre Dublin is Ireland's first purpose built convention centre. Since it opened in September 2010 it has already hosted nearly 1,000 events including the following major events over the past two years:

Start Date	End Date	Event Name	Delegate Numbers
17/06/12	21/06/12	16th International Congress of Parkinson's Disease & Movement Disorders	5100
09/09/12	14/09/12	Annual EAIE Conference	4351
30/09/12	05/10/12	International Bar Association	4230
02/11/13	06/11/13	International Society for Pharmacoeconomics and Outcomes Research	3697
16/09/14	21/09/14	European Society for Paediatric Endocrinology c/o Bioscientifica	3352
01/09/13	05/09/13	International Pharmaceutical Federation	3500
22/05/12	24/05/12	TM Forum – Management World	3000
12/07/12	15/07/12	Euroscience 2012	4500
16/10/13	19/10/13	Congress of the European Association of Osseointegration	2750
04/05/14	09/05/14	Annual Meeting of ESPID	2557
06/06/12	09/06/12	K.I.T. – European Cystic Fibrosis Conference	2463
06/11/12	09/11/12	24th EORTC-NCI-AACR symposium on "Molecular targets and Cancer Therapeutics"	1866
05/09/12	08/09/12	World Molecular Imaging Congress WMIC 2012	1734
11/05/13	15/05/13	eHealth Week/WoHIT (World of Health IT Conference & Exhibition (organised by HIMSS Europe)	1991
03/05/12	05/05/12	EuroPRevent	1570
13/10/14	19/10/14	One Young World via Conference Partners	2000
28/05/13	01/06/13	International urogynaecological Association – IUGA	1583
22/06/12	26/06/12	Society for Molecular Biology and Evolution	1321
23/03/14	25/03/14	Radiodays Europe	1280
17/06/13	20/06/13	EuroNanoForum (ENF) 2013	1472
25/10/13	26/10/13	13th AMD and Retina Congress	1150
05/07/14	05/07/14	Words of Peace Global	1763

CCD LAYOUT



Your Meeting Space

It is proposed to host the welcome reception on the Sunday evening in the Atrium of the Convention Centre overlooking the River Liffey and Dublin city skyline. A registration desk will be set up so that delegates can register for the conference in advance of the reception.

The Opening Session and plenary session of the conference from Monday-Wednesday will take place in the impressive Auditorium which can accommodate a maximum of 2,000 delegates over Levels 3-5. Breakout sessions and conference workshops will take place on the Liffey & Wicklow levels – a series of meeting rooms all situated on level 1& 2 of the Convention Centre.

Lunches and refreshments will be served within the spacious exhibition space, The Forum on the Ground Floor.

Our turn key rental package will aid the success of the 2019 FIG Working Week with the latest in digital audio-visual equipment to ensure that the presentations and speeches carry the maximum impact, our high-speed wireless broadband (Wi-Fi) network provided free of charge to delegates as well as our friendly and knowledgeable hosts to assist delegates and ensure an enjoyable experience for FIG and the attendees.



Liffey Boardroom 3



Liffey B

Your Package

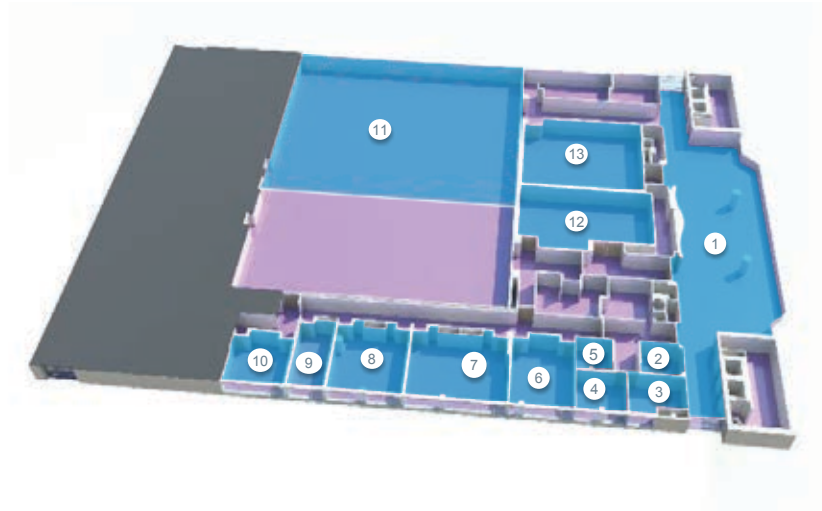
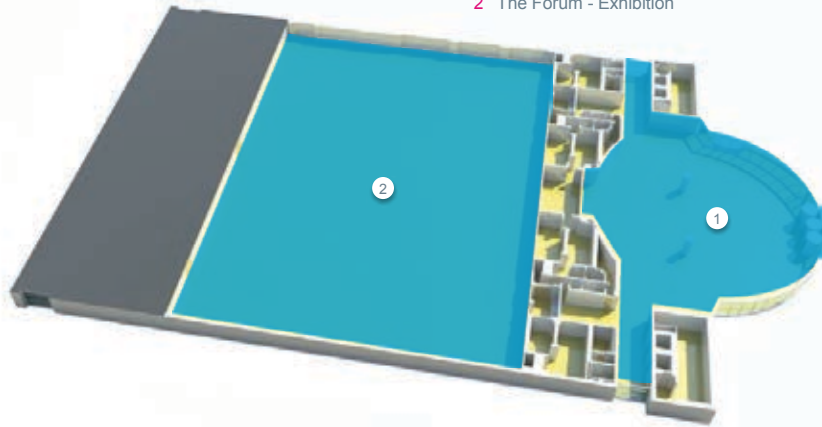
Your room rental package at The CCD offers a range of services as standard, including the following.

- Core CCD Technical equipment and personnel
- Digital signage
- Registration desks
- Complimentary guest Wi-fi
- Room partitioning (if required)
- CCD Hosts
- CCD Furniture
- CCD Cleaning
- CCD Security
- Optional extra charges include your CCD Hospitality package and any upgrade options, such as supplementary technical equipment or expertise, additional staff, Event IT, and the use of mobile digital signage units.

YOUR PROPOSED SPACES

YOUR PROPOSED SPACES

- 1 Ground Floor Foyer
- 2 The Forum - Exhibition

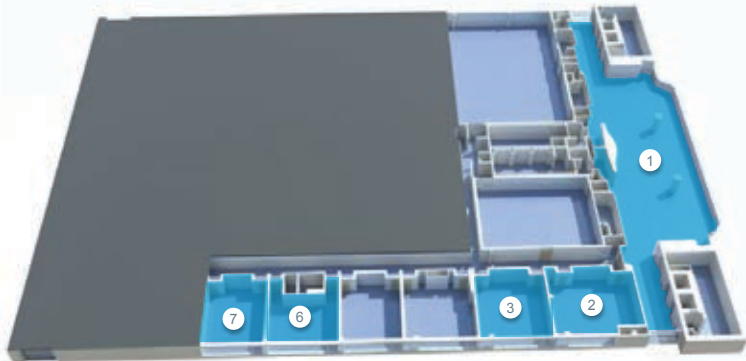


YOUR PROPOSED SPACES

- 1 Level 1 Foyer
- 2 Liffey Boardroom 1 – Member Association Office
- 3 Liffey Boardroom 2 –President /Council Meeting
- 4 Liffey Boardroom 3 – Speaker Preview Room
- 5 Liffey Boardroom 4 – FIG Office
- 6 Liffey Meeting Room 1 – ACCO Meeting/Commission Meeting/Technical Session
- 7 Liffey Meeting Room 2 – Technical Session
- 8 Liffey Meeting Room 3 – Technical Session
- 9 Liffey Meeting Room 4 – Commission Rom 1
- 10 Liffey Meeting Room 5 – Commission Room 2
- 11 Liffey B – General Assembly
- 12 Liffey Hall 1 – Technical Session/FIG Presidents Meeting
- 13 Liffey Hall 2 – Technical Session

YOUR PROPOSED SPACES

- 1 Level 2 Foyer
- 2 Ecocem Room – Technical Session
- 3 Wicklow Meeting Room 1 – Technical Session
- 6 Wicklow Meeting Room 4 – Commission Room 3
- 7 Wicklow Meeting Room 5 – Commission Room 4



YOUR PROPOSED SPACES

- 1 Level 3 Foyer
- 2 Level 4 Foyer
- 3 Level 5 Foyer
- 4 The Auditorium – Opening Ceremony/ Plenary



TESTIMONIALS

Many thanks for everything. You and the team were fantastic. We really appreciate how your staff and facilities make it is so easy to have an event in The CCD and look forward to having future events there.

Jamie Harnett, Sigmar Recruitment – National Employment Week, February 2014

I Truly appreciated working with everyone on the team, I felt all of my requests were being handled efficiently and above average, no matter what I requested it was handled in a timely and efficient manner. The team is also very kind and always pleasant to work with and I am sad that we won't be there more often.

Jeanne Bureau, 9th European International Kidney Cancer Symposium, April 2014

The World Youth and Student Travel Conference has been to convention centres all over the world and I can say that The CCD in Dublin is by far and away the best we have ever used. Not only is The Convention Centre brilliantly designed and laid out but the responsiveness of the Management and the staff to all of our needs was excellent. The whole Convention Centre made a huge positive difference to the success of our Conference. Thank you all.

David Chapman, World Youth and Student Travel Conference (WYSTC) 2014, September 2014

The venue has been truly amazing to work with”, said Kate Sargent of Bioscientifica Ltd, the official PCO for ESPE 2014. “We are most impressed with the dedication of all of the staff at The CCD and the very warm welcome we have had, not only onsite, but during the planning process over the past year. We are delighted to share this special occasion with The CCD and hope to return at some point during the next 1,000 events!

Kate Sargent, 53rd Annual European Society for Paediatric Endocrinology (ESPE) Meeting 2014, September 2014

The CCD was really the only choice to host the One Young World summit in Dublin, with the best facilities and location, combined with a proactive approach to assisting us win the bid at the outset. Few buildings in Ireland come close to The CCD for flexibility and state of the art technology, making it an industry standard bearer for summits and conferences in Western Europe.

Bob Coggins, One Young World Summit 2014, October 2014

Auditorium – venue for Conference Opening Session



CITY CENTRE AND THE CONFERENCE CENTRE, DUBLIN

SEE HOTEL LIST ON PAGE 45



Case Study

Delegates: **2,000**

Client: **One Young World**

Event: **One Young World Summit 2014**

Type: **Conference**

Dates: **15-18 October 2014**

Days: **4**

Brief

One Young World is a not-for-profit organisation that connects and guides young leaders from around the world who are driving real change in their countries, communities and companies. The fifth One Young World Summit took place in Dublin in October 2014 and was unique in giving its delegates and ambassadors the opportunity to interact directly with high profile leaders.

Solution

The Dublin bid to host the One Young World Summit was submitted by Bob Coggins, Clara Kelleher and Valerie McGrane, a group of Dublin based youth leaders, and was supported by Fáilte Ireland, through Dublin Convention Bureau. The team overcame strong competition from Hong Kong and Edinburgh and won the bid based on Dublin's experience hosting top international events and its world renowned hospitality, youth, creativity and innovation.

The local organising committee engaged Conference Partners as the professional conference organiser for the event, and selected The CCD to host the 2014 summit due to its large conference facilities, central location and excellent transport links. Bob Coggins commented, "The CCD was really the only choice to host the One Young World summit in Dublin, with the best facilities and location, combined with a proactive approach to assisting us win the bid at the outset. Few buildings in Ireland come close to The CCD for flexibility and state of the art technology, making it an industry standard bearer for summits and conferences in Western Europe".

The four-day summit opened in the Auditorium with a welcome address from An Taoiseach, Enda Kenny T.D., followed by the symbolic flag-laying ceremony which included 196 members, each bearing the national flag of their country. The session also featured inspiring keynote speeches from Sir Bob Geldof and former President of Ireland, Mary Robinson.

Topics on the agenda included human rights, education, global business, health, sustainable development and leadership and government. The key theme for the 2014 summit was peace and conflict resolution, using Ireland's legacy and relatively recent reconciliation as an example to guide discussion.

Plenary sessions were held over the four days and served to give the young delegates a unique opportunity to hear and be heard by global leaders such as the former UN Secretary General, Kofi Annan, Wikipedia founder Jimmy Wales, activist Ali Hewson and global sports star Boris Becker. Delegates also attended external breakout sessions which were organised to deliver a wide range of topics in more than 30 venues throughout the city including Google HQ, Facebook HQ, Trinity College and the Guinness Storehouse.

Dublin truly embraced the One Young World Summit, with delegates receiving a 'One Thousand Welcomes' tour from young Dubliners which took in the real sights and sounds of the city. Attendees also stepped off the plane in Dublin to be greeted by welcome posters at the airport, and the branding continued throughout the city on buses, bus stops, lamp posts, billboards and the exterior and interior of The CCD.

There were a number of first time experiences for The CCD during the summit. A scale model of Richard Branson's space shuttle arrived the day before opening and was on display beside The CCD throughout the event. CCD Security played an integral role in supporting the installation of the shuttle and monitoring the manning of the area each day.

CCD Security and Health and Safety also liaised with Dublin Fire Brigade to obtain approval for a full blackout in the Auditorium during a special session on disability to challenge people's perceptions. They also worked with the Garda traffic unit on a plan to stop traffic during the final day of the summit when thousands of white balloons were released by delegates who lined up along the River Liffey to mark 25 years since the fall of the Berlin Wall.

Results

One Young World was arguably one of the most exciting, inspiring and enjoyable events hosted in Dublin in 2014. 2,000 delegates aged 18-30 from 196 countries attended the four-day summit with Fáilte Ireland estimating its worth at around €2 million in direct economic impact for the local economy. Organisers David Jones and Kate Robertson hailed the Dublin event as "the most successful in its five-year history".



ACCOMMODATION

ACCOMMODATION

Dublin's 5 Stars

Luxury and elegance unite in the superb five star properties of Dublin. There is every style of comfort from which to choose. Whether it be the Georgian delight of the Merrion Hotel, the super-luxury of the Westin, or the charming elegance of the Westbury, guests will be extremely satisfied.

Dublin's 4 Stars

Dublin boasts a collection of excellent 4 star properties within easy access of the Convention Centre Dublin. The superb Gibson Hotel, in Dublin's new Docklands Quarter, offers exceptional service and style. Both the Spencer and Maldrón Hotels, a short walk from the Convention Centre, have gained excellent reputations from the business tourism market.

Dublin's 3 Stars

For the more budget-conscious delegate, Jury's Inns Custom House Quay, just a five minute walk from the Convention Centre, offers excellent facilities at reasonable prices.



ACCOMMODATION RATES

There are several top class hotels in different price categories within easy reach of the Convention Centre Dublin. The Dublin Convention Bureau has (at no cost) provisionally block booked accommodation in the hotels considered most suitable for delegates attending the FIG Working Week should it take place in Dublin in 2019. A list of the hotels, the number of rooms provisionally booked, the prices and the distance from the convention centre are set out in the table below. The structure of our hotel categorisation system equates our 3 star hotels to 4 star properties in mainland Europe. Delegates staying in hotels that are 15 minutes or more of a walk from the Convention Centre Dublin can avail of a daily coach transfer to and from the Conference Centre.

Hotel Name	Room Allocation	Distance from CCD	Single Occupancy B&B	Double Occupancy B&B
5*				
The Westbury Hotel	25	2km (25 min walk)	€310	€330
The Marker Hotel	80	600m (8 min walk)	€330	€350
The Westin Hotel	90	1.5 km (20 min walk)	€360	€380
The Shelbourne Hotel	100	2 km (25 min walk)	TBC	TBC
4*				
The Gibson Hotel	150	900m (11 min walk)	€200	€210
The Maldron Hotel Cardiff Lane	150	300 m (4 min walk)	€200	€201
Trinity City Hotel	30	1.3 km (15 min walk)	€189	€201
The Spencer Hotel	80	240 metres (3 min walk)	€210	€220
O'Callaghan Davenport	20	1.3 km (15 min walk)	€240	€250
DoubleTree by Hilton Dublin – Burlington Road	150	2.5 km (30 min walk)	€175	€195
The Gresham Hotel	100	1.8 km (22 min walk)	TBC	TBC
North Star Hotel	80	1.1 km (14 min walk)	€180	€200
3*				
Jury's Inn Custom House	80	450 metres (6 min walk)	€170	€190
Grand Canal Hotel	50	1.3 km (15 min walk)	€170	€180
O'Callaghan Mont Clare	20	1.3 km (15 min walk)	€215	€225
Temple Bar Hotel	80	1.6 km (20 min walk)	TBC	TBC

Dublin's city centre (1.6 km/20 min walk from CCD) boasts a range of excellent 3* properties which are offering rates of €100-€140 single occupancy over the proposed dates.

There is an abundance of hostels and more budget properties within 20 min walk of the Convention Centre Dublin.



SUSTAINABILITY

SUSTAINABILITY

Environmental Sustainability & CSR

Today, many individuals, groups, and businesses are taking more and more responsibility for the impact of their activities on customers, suppliers, employees, communities and the environment. This is as a result of a growing realisation that the disintegration of our environment will have more direct, greater and longer lasting consequences than were ever considered before.

In choosing Dublin as the host city for the FIG Working Week 2019, FIG will already be taking proactive measures to limit the environmental impact of bringing 800-1200 conference delegates to a destination.

The Convention Centre Dublin (CCD)

Building on its green foundations as the world's first carbon neutral convention centre, the Convention Centre Dublin is committed to long-term environmental sustainability in accordance with the International Standards Organisation (ISO) 14001.

This includes recycling, a focus on reducing overall energy consumption by using a sustainable energy supplier and integrating sustainable systems at the venue, such as its Integrated Building Automated System (IBAS). They have also installed a thermal wheel heat recovery system and an Ice Storage Thermal Unit (ISTU), which chills water overnight to form large ice blocks that melt during the day to provide air conditioning for the entire building.

CCD Environmental Policy

The CCD have developed an environmental management policy to positively impact on local, national and global environmental issues by prompting good practice at The CCD. This includes customers, contractors and suppliers.

They are committed to the following:

- Conserving energy and selecting renewable sources of energy and materials where possible
- Preventing pollution

- Leading the exhibition and event industry to develop solutions to environmental issues within the industry
- Encouraging colleagues to become more environmentally responsible
- Positively developing our environmental policies, procedures and systems
- Minimising waste
- Ensuring that any paper and timber we use is obtained from sustainable forests
- Developing an integrated transport policy

The CCD recognises the role they play and their responsibility to protect the environment from further damage and minimise the waste produced. They are therefore committed to operating in an environmentally friendly way.

Event Partners

As part of their remit as the local Destination Management Company (DMC) for the FIG Working Week 2019, Event Partners are committed to bringing a Green Approach to the conference.

They are currently in the process of seeking accreditation under the ISO 20121: Events Sustainability Management Systems. This is testament to Event Partners' environmentally friendly and sustainable approach in the services they provide to conferences as well as internally amongst their own staff. They have a dedicated ISO team to encourage environmental responsibility through employee awareness, environmental communication and training. Each new member of staff is made aware of the company's environmental policy as part of their induction. Moreover, as part of its Management Programme, they carry out a number of environmental objectives each year and measures are taken to encourage staff to meet the targets set out throughout the year in areas such as energy saving and recycling.



When selecting third party suppliers, Event Partners stipulate that potential preferred suppliers complete an environmental audit. They also actively encourage their suppliers and partners to adopt green policies and present new sustainability focussed solutions. Such examples have included audio visual and display suppliers using low-energy lighting; caterers using organic and locally sourced food and providing fair trade tea/coffee as well as a number of suppliers presenting solutions for waste recycling.

In addition any waste such as conference brochures, printed pages, name badges, and other promotional material are recycled.

Other Measures

FIG can encourage delegates to think in terms of their carbon footprint when organising travel to the conference including offering carbon offsetting and promoting the use of public transport throughout the event. Dublin is a compact, easily walkable city with the area around the CCD served by coastal train (DART), Dublin Bus and a light rail network (LUAS).

Delegates can also avail of the Dublin Bikes scheme with bike stations located around the city including at the CCD. The 450 bikes are available for hire from 40 locations to encourage commuters and visitors to take a greener option. Bicycles will be free to use for the first 30 minutes each time and a 3 Day Ticket costs just €2.

Another option is Ecocabs, a free service operating within a 2km radius of O'Connell Bridge. Ecocabs take members of the public from designated 'pick-up points' within and around Dublin city centre. If not already in use on the streets, the Ecocabs will be at one of these points.

Dublin is a Fairtrade City since 2008 and FIG can promote this fact in their communications and work with Dublin Convention Bureau in producing a Fairtrade coffee shop and restaurant trail for delegates.

Corporate Social Responsibility (CSR)

Another closely related area that FIG may wish to consider including in their Working Week 2019 programme should it come to Dublin is that of corporate social responsibility. A CSR event allows colleagues and peers to develop socially responsible attitudes towards their organisation, country and society in general.

FIG could consider suggestions ranging from painting an Irish school to building a bike for an Irish Charity. For example Barnados is a children's charity, established in Ireland in 1962, who work with vulnerable children and their families in Ireland and campaign for the rights of all children. It is possible to organise for a group of FIG Working Week 2019 delegates learn how to build a bike from the ground up! When the bikes are built and the "Stamp of Approval" is given by the mechanic mentor, they will wheel their way to Children in need with the assistance of Barnados.

Another option is to Plant a Tree for Life. Working in teams and armed with a spade, saplings, GPS and a map, participants will locate a number of designated areas. A sense of adventure is fostered as individuals come together to plant trees in welcome environments – such as schools, parks, hospitals and other community spaces. By taking part in this experience, delegates will perform a service on behalf of the association, the community and, ultimately, the earth itself. The event concludes with a 'thank you ceremony' attended by all participants.



 SOCIAL PROGRAMME

SOCIAL PROGRAMME

The social programme of any event is central to its success. In today's industry we increasingly find ourselves generating business opportunities outside the office walls, therefore the social programme will play a key role in the overall event programme.

Dublin has the great advantage of being a cosmopolitan capital city which has the Irish Sea lapping its shores to the East whilst to the West and North, there is rolling countryside which aptly showcases Ireland as the "Green Isle". Further, the heather-clad Dublin Mountains form the gateway to the South and the "Garden Of Ireland", County Wicklow. This offers the delegates a wide array of innovative and entertaining tours both around the city centre and to the varied landscape beyond.

Dublin offers a variety of impressive venues for evening functions, from the traditional to the sophisticated, from the casual to the chic, the options are extensive affording the opportunity for all moods and sentiments to being captured and met.

Welcome Reception

The welcome reception sets the scene for any international event. We embark on the journey of the FIG Working Week by communicating the challenges, the objectives of what we hope to achieve from the next seven days and engage the delegates, sponsors and exhibitors from the outset.

We propose holding the welcome reception at the Working Week venue. The evening reception will provide a networking opportunity for delegates to meet in a relaxed and atmospheric environment, reacquaint with past acquaintances and familiarise themselves with the venue for the days ahead.

If the budget allows we would suggest treating the delegates to a warm Irish welcome as the award winning entertainers The Rhythm Corporation take the stage. A show which incorporates fast moving traditional Irish music, song and dance, delegates will feel the pulse of a rich and vibrant musical heritage and come away with a truly enjoyable experience.



The Rhythm Corporation

Foundation Dinner

Option 1 – Old Jameson Distillery

The Irish Shindig Night at the Old Jameson Distillery includes fine food, traditional Irish music and dance.



After a private tour of the Distillery, delegates will enjoy an aperitif of a signature Jameson drink, followed by a scrumptious four-course meal. Delegates will experience an authentic and lively traditional Irish night with performances from the Jameson Players and Claddagh Dancers.

Option 2 – Trinity College Dublin

Trinity College Dublin, founded in 1592, is the oldest university in Ireland. Located in the heart of Dublin City, a walk through the cobbled stones will take you back to the 18th Century. Also, a unique and prestigious banqueting venue catering for up to 1,200 guests, the Trinity Irish Night combines good food, Irish entertainment and great networking in one of the most historic properties in Dublin.



Hosted Reception



Venue Option 1: The Guinness Storehouse



Venue Option 2: Dublin Castle

If we are successful in securing a hosted reception for the FIG Working Week there are a number of venue options where it could possibly take place depending on the level of support achieved.

Recent reports have placed the quality of food in Ireland en par with both France and Italy. Food is part of the Irish culture, part of the Irish brand and one of our biggest exports. That is high praise indeed and on the night of this hosted reception we will demonstrate why it is so well deserved. This evening, the focus will be on Ireland's amazing food; from seafood stations and local cheeses, to farm fresh vegetables and artisan baked treats.

Located in the heart of Dublin, Guinness Storehouse is an exciting and unusual venue. Its huge windows offer inspiring views of the Brewery and beyond to Dublin, the Irish Sea and the Dublin Mountains, creating one of the most stylish and exclusive entertainment venues in the capital. Enjoy a perfect pint of the black stuff in the home of Guinness!

Since its foundation in 1204, the prestigious Dublin Castle has been at the heart of the history and evolution of the city. Today Dublin Castle contains two museums, two gardens, Government Buildings and the State Apartments which are the most important state rooms in the country.



Gala Dinner

Interpreting the mood and understanding the sentiment is crucial when we organise this wonderful and most important element of the social programme. This will be a signature event unique to this event, its objectives and its essence.

A special venue for the Gala Dinner could be The Round Room in The Mansion House. Situated in Dublin's city centre, the Mansion House is the Lord Mayor's official residence. The Round Room was built in 1821 for the much-anticipated visit of King George IV. For nearly 200 years the Round Room has continued making history and has been the venue of choice for historic events in Irish History – such as the proclamation of The Irish Declaration of Independence. The Round Room is a chameleon venue which is capable of taking on thousands of varied characteristics that are required for individualistic events.

The Mansion House is located on Dawson Street which runs parallel to the famous shopping area of Grafton Street. The venue can be transformed into a wonderland of candlelight, atmospheric lighting and floral centrepieces. Colourful linens and chic furniture will create a spectacle to behold and the sense of occasion will be palpable.

An additional venue option is the Royal Hospital Kilmainham (RHK). The RHK is an unrivalled setting for any event large or small. Classical in style and unique in setting, the RHK has gained a superb reputation as a lavish venue in Ireland. Its splendour has to be seen to be believed. This historic and tranquil haven, set in 48 acres, enjoys an ideal location and is easily accessible from all routes. Set in stately grandeur of its own formal landscaped gardens and tree lined avenues.



Colourful linens and chic furniture will create a spectacle to behold and a sense of occasion will be palpable. We will create a striking stage design, provide arresting lighting displays and use state-of-the-art audio visual and video production ensuring a most unforgettable evening.

The delegates will enjoy engaging entertainment representative of the Irish location and culture but equally reflecting the collective tastes of the audience. The finer and intrinsic details such as menus and place names will illustrate the branding of the Working Week and will demonstrate the consistent creativity that will be associated not just with this part of the programme but also with the Working Week as a whole from conception to conclusion.

Farewell Reception

The purpose of the farewell reception should be to synopsise the events of the week, motivate for the future, show the legacy of the FIG Working Week and capture the social moments and achievements of the week.

The reception will be about facilitating a fusion of cultures. Demonstrating the breath of reach of the delegates, a global focus will be taken to each and every element of the event. Delegates will experience a culinary feast of delicacies from around the world, while a plethora of international and Irish entertainers will fuse their talents to create the most awe inspiring sounds. Picture this, a traditional Irish fiddle player in session with an Indian percussionist or an Nigerian guitarist duet with an Irish harpist... the possibilities are endless!

This reception will take place where the Working Week began, in the main congress venue.

Exploring Dublin



Literary Walking Tour

Here is an opportunity to discover Medieval and Georgian Dublin through the eyes of a famous Dublin street poet who will bring to life Dublin's writers and walk the very paths that inspired our luminary writers like Swift, Yeats, Joyce, Wilde and Beckett.

This performance tour takes you to Dublin Castle, St. Patrick's Cathedral, Christ Church and Trinity College.

Sight Jogging Tour of Dublin

Sight Jogging Dublin is an alternative and fun way to discover the city. A local jogging guide will take delegates through the city's liveliest quarters and finest squares while pointing out Ireland's most important landmarks such as St Patricks Cathedral, Trinity College, Dublin Castle and more.

The guides will also provide delegates with information on current events, markets and festivals so your experience of Dublin will be as authentic as it gets! What's more, you'll get insider tips on the best bars, restaurants, music and comedy venues.

The Rebellion Walking Tour

This is an excellent opportunity to discover the city in a very unique way. The tour will be led by Lorcan Collins, author of the Easter Rising published in 2000 and James Connolly (2012) and founder of the 1916 Rebellion Walking. A fascinating and unforgettable moment awaits our guests during this tour where the group will meet fascinating actors like James Joyce, the Molly Malone along with musicians and poem readers.

There is no better way to be introduced to the capital of Ireland!

Fabulous Food Trail

The award winning Dublin Walking Tour, Dublin Tasting Trail, delegates visit a range of bakeries, food halls, street markets, cheesemongers, delicatessens and other speciality shops. Delegates will meet artisans whose families have traded for generations producing great food as well as new arrivals to the food scene bringing new international tastes and food ideas to the Irish table. And they will taste Irish produce served in both traditional and contemporary styles.

As they enjoy the food, they'll also learn a little about the culture and history of each neighbourhood. Those familiar with the city will be amazed to discover food outlets and tasty surprised they never knew existed and visitors will leave with an insider and up to date knowledge of the best of what is happening food-wise in Ireland.



Gaelic Games Experience

Take part in Ireland's unique National games of Hurling and Gaelic Football. Steeped in history these games offer all the elements which make a great team event: fun, co-ordination, skill and camaraderie.

Hurling is one of the world's oldest field sports and has been played in some form in Ireland for over 800 years. Played with a Hurl (stick) and a Sliotar (ball) you will learn the skills needed to lift and hit the ball in a fun and entertaining way.

- **Gaelic Football:** In essence the sport is a fast paced game requiring skill, speed, intelligence, strength and passion. It's a tough sport played at furious pace in which the ball can be kicked or punched, in an effort to get it into or over the opposing team's goal. With our fun experienced coaching we teach you the skills you need for this game.
- **Ethiad Skyline Tour:** Accompanied by an experienced tour guide, visitors will ascent to a walkway 44 metres above the grounds of the home of our national sport. Delegates can take in panoramic views of the Irish capital and find out more about Dublin's key landmarks. Skyline includes stops at five viewing platforms along Croke Park's 0.6km rooftop walkway. Each stop gives visitors the opportunity to learn about the highlighted buildings and sites in their line of vision.



TECHNICAL TOURS

TECHNICAL TOURS

The Technical Tours have been organised to complement the FIG Working Week experience and will visit organisations and sites of particular interest to FIG delegates.

From the moment delegates register for their tour of choice, they will be provided information on meeting points and departure times, along with any other necessary logistical information.

Closer to the congress, delegates will be reminded of the centralised meeting points for the respective tour for which they had previously registered online. Delegates will then be escorted to the technical tour organisations and sites by coach. It is hoped that lunch will be provided by each host company. If this is not the case, delegates will receive a 'grab 'n' go' lunch bag on departure from the congress venue. Maximum numbers for each tour will be agreed in advance.

Ordnance Survey Ireland (OSi)



Ordnance Survey Ireland (OSi) is the National Mapping Agency (NMA) of Ireland and has a proud 190 year tradition of innovation in mapping techniques which they continue to build on today. In 1846, Ireland was the first country in the world to be entirely mapped at the detailed scale of 6 inches to 1 mile. Today mapping in Ireland is based on a fully GNSS compatible mapping framework and infrastructure realised via a network CORS stations. In addition, a recently developed authoritative spatial data storage model (PRIME2) ensures consistent and unique referencing of topological state information.

During the visit to the OSi participants will be briefed on the development of the current mapping infrastructure, spatial data management and an outline of the products and services OSi provide.

Location: Phoenix Park, Dublin



Birr Castle Demesne

Birr Castle Demesne houses an interactive science centre which reveals the wonders of early photography, engineering and astronomy. In the early 1840's, the Third Earl of Rosse designed and built the largest telescope in the world with which he discovered the spiral nature of some of the galaxies, and from 1845-1914, hundreds of scientists from around the world came to Birr to observe the stars and marvel at this feat of engineering in the middle of Ireland. This Reflecting telescope remained the largest in the world for over 70 years and is arguably the largest historic scientific instrument still working today. The 'leviathan' remains in the centre of the Demesne which includes 50 hectares of park land and formal gardens and terraces.

Participants will have the opportunity to view the 'Great Telescope' and take part in the interactive science centre in addition to enjoying the Castle grounds and facilities.

Location: Birr, County Offaly – 1hr 45mins from Dublin



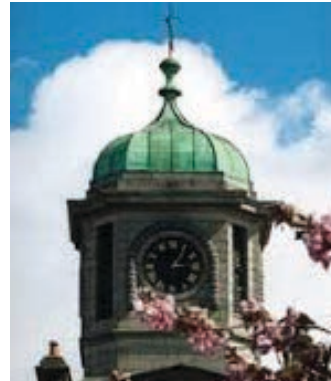
Newgrange (Brú na Bóinne)

Brú na Bóinne is a World Heritage Site and is dominated by three well-known large passage tombs, Knowth, Newgrange and Dowth with an additional ninety monuments built some 5,000 years ago. A thousand years older than the Pyramids and the oldest astronomical observatory in the world, Newgrange is completely intact since the Stone Age. Alignment of the passage tomb in Newgrange is such that at dawn on the winter solstice – December 21st – and for a number of days before and after, a shaft of sunlight enters the chamber through an opening in the roof box. The construction and alignment of these passage tombs have been the subject of much archeo-astronomy research in Ireland.

The Brú na Bóinne visitor centre contains exhibitions that describe the society that created the Neolithic tombs with particular emphasis on the building of the monuments. An audio-visual show deals primarily with the solar alignments in the Boyne Valley.

Participants will be briefed by on the construction and significance of Passage Tombs and have the opportunity to enter Newgrange passage tomb.

Location: Boyne Valley, Co. Meath – 45mins from Dublin



Grangegorman (DIT Campus)

The Dublin Institute of Technology (DIT) is one of Ireland's largest and most innovative university-level institutions and the new DIT City Centre Campus – Grangegorman – which will unify DIT's multiple city centre campuses is currently under construction and will ultimately house all 20,000

students and 2000 members of staff. As nearly 20% of the student body comes from outside Ireland a culturally diverse and stimulating teaching and research environment will be created.

In the DIT College of Engineering, The School of Surveying and Construction Management are the longest-established and best educators of property, construction and spatial information professionals in Ireland and educate the full gamut of surveying professionals represented in the FIG commissions.

Participants will be briefed on the development of the Grangegorman campus and visit The School of Surveying and Construction Management.

Location: Dublin City



PRE & POST CONFERENCE TOURS

*Horse Riding on Rossbeigh Beach,
Glenbeigh Killarney, Co. Kerry*

PRE & POST CONFERENCE TOURS



Pre and post conference tours will be offered to FIG Working Week delegates. These will be run based on minimum numbers. Below is a sample of the tours that are available allowing delegates and accompanying persons to enjoy Ireland's beautiful scenery and affording them the opportunity of visiting historic places of note such as:

- Kilkenny City, Co. Kilkenny
- The Giant's Causeway, Co Antrim
- Bunratty Castle, Co Clare

Tour 1: Dublin – Kildare – Shannon, 4 Day Tour

Day 1

Up early, guests will make the easy transfer from Dublin to Ireland's horse county of Kildare, where they will be treated to a fabulous gourmet dinner and overnight in one of Ireland's most luxurious five-star golf resorts, The K Club, home of the Ryder Cup 2006.

Day 2

It is a short trip from Kildare to the beautiful and scenic region of the Shannon, famous for the long and beautiful river that winds through this area and down to the Atlantic Ocean at Limerick City. Guests will be treated to a sumptuous dinner and overnight in the historic and opulent surroundings of Dromoland Castle.

Day 3

Irish castle resorts are famous for their beautiful grounds and wide range of activities. To avail of the best this resort has to offer, delegates can spend a morning trying out sports like clay-pigeon shooting or angling.

Later, guests will be taken to Bunratty Castle & Folk Park, which includes a 13th century castle and a fascinating folk park. This attraction recreates rural and urban life in 19th-century Victorian Ireland. Lunch will be served in the authentic and cosy surroundings of a traditional Irish pub. Bunratty is famous for its lively nightlife and guests can later enjoy dinner in one of the town's cracking pubs, Durty Nelly's.

Day 4

It's a quick transfer to Shannon Airport for departure.

Tour 2: Dublin – Wicklow – Kerry, 5 Day Tour

Day 1

After enjoying breakfast in the hotel, guests will be picked up by a fleet of Land Rover Jeeps and will have to complete several testing challenges on the way to Ballyknocken House in County Wicklow, just south of Dublin. Get ready for an Irish dancing competition, Guinness pint pulling, and a clue-solving session involving the locals!

On arrival, guests will be treated to an extraordinary lunch in the delightful and traditional Hay Barn. Afterwards, it's off to the forest where everyone gets the chance to drive specially prepared Land Rover vehicles over the rocky Wicklow mountain terrain. Also on the agenda are blind driving challenges and clay pigeon shooting.

After the day's activities and prize giving, the group will travel back to their selected hotel in a convoy – guests can keep in touch with each other via special radio sets on the way back to the hotel. After some chill out time in the hotel it is off to a chic city centre restaurant for dinner.

Day 2

After breakfast in the hotel, guests get the chance to explore the charms of Dublin city for themselves. That evening it is off to the outstanding Number Six Kildare Street, home of the Royal College of Physicians of Ireland and one of Ireland's most prestigious addresses for private dinner and entertainment.

It's fun all round as guests are met by a traditional piper who will lead them into the venue for drinks and canapés before dinner.

This is no ordinary venue, the reception will be held in the stunning Graves Hall while listening to a band performing French and Italian Café music, and Brazilian bossa nova.

Dinner is served in the impressive Corrigan Hall with post-prandial musical treats from a string quartet and singing pianist.

Day 3

Breakfast is in the hotel before transfer to magnificent Killarney by coach, stopping off at the picturesque Adare village for lunch. Along the way, guests stop off to pick up a lively hitchhiker character to entertain them on their way, before arriving at the hotel and taking a leisurely stroll around this awe-inspiring Kerry town.

It's a traditional pub dinner that evening, where guests can relax and enjoy the jovial atmosphere, including Irish dancing and singing from the experts and invitations for everyone to join in!



Day 4

It's off by coach to Kate Kearney's Cottage, where guests are greeted by local Jarveys with their horses and jaunting cars. This is the mode of transport for the next seven miles through the hauntingly beautiful Gap of Dunloe.

Lunch is a BBQ served at Lord Brandon's Cottage beside the lakes and afterwards guests are treated to an amazing falconry display. This is

followed by a boat trip across the three lakes of Killarney and the day ends at an Irish castle, where guests are transferred back to the hotel.

A private farewell dinner is served in one of Killarney's finest restaurants before the evening's entertainment commences – a lively Irish band to finish the trip on a high note!

Day 5

Guests are transferred to Shannon Airport for their return flights home.

Tour 3: Dublin – Belfast – Dublin, 3 Days

Day 1: Discovering Northern Ireland

Before departing Dublin for Northern Ireland guests will visit Malahide Castle, which is set on 250 acres of parkland in the pretty seaside town of Malahide. Here, guests can enjoy a light lunch in Cruzos restaurant on the Marina in Malahide before embarking on the drive towards Belfast City.

After checking into a luxury hotel, guests will be chauffeured by a local guide in a traditional black taxi for a tour of Belfast City. This tour allows guests to sit back and to acquaint themselves with Belfast city which is steeped in history and culture.

Evening entertainment is provided as guests dine in one of Belfast's great restaurants.

Day 2: The Giant's Causeway

On day 2, guests will visit Northern Ireland's premier tourist attraction, The Giant's Causeway. This site is comprised of 40,000 basalt blocks with interlocking basalt columns, formed by cooling lava some two million years ago. Legend has it that the giant Finn McCool, the Ulster warrior, built giant sized stepping stones to bring his love from the island of Staff off the Scottish coast across the sea to Ulster.

Guests will also be given an opportunity to visit the heart-stopping Carrick-a-Rede Rope Bridge. For those brave enough to cross the 24m deep and 18m wide Atlantic chasm, they will enjoy stunning views over the sea to the Scottish Coast.

Three kilometres from this fascinating causeway coast brings you to Bushmills, home to Ireland's oldest working distillery and the oldest licensed distillery in the world. Here, guests can enjoy lunch and a guided tour before departing back to Belfast.

Evening entertainment is in the form of a Gala dinner at Waterfront Hall, Belfast. It is the perfect venue for your final night in Ireland. After dinner enjoy the spectacle of a troop of Irish Dancers, who will perform a selection of routines from the lyrical moves of soft shoe dance to the more dynamic moves and sound of hard shoe. Guests will stay overnight in their luxury Belfast City Centre Hotel.

Day 3

It's up early for transfers to Belfast/Dublin/Shannon Airport and a farewell to the green Isle.





DUBLIN – CITY OF LIVING CULTURE

DUBLIN – CITY OF LIVING CULTURE

Dublin, Ireland's capital is a city that truly captures your imagination with cobbled alleys, Viking remains and Georgian squares. Dublin's history goes back over a thousand years. Step back in time in this city full of literary landmarks, from the James Joyce Tower to Trinity College, alma mater of many of Ireland's greatest writers.

Steeped in history and youthful energy, Dublin is a medieval city where the charming and cosmopolitan converge in delightful diversity. Fine museums and art galleries chronicle Dublin's long and colourful past, while the pubs and cafes buzz with traditional and contemporary entertainment.

Throughout Dublin city and county you will find an abundance of visitor attractions to discover and explore, from the most majestic museums to more modern centres of entertainment. Whether your interest is sport, history, art or literature, whether you want to follow a heritage trail, visit a zoo, eat in a castle or follow in the footsteps of Dublin's many musical greats, there's something for everyone in Dublin and a story at every glance.

The Dublin Region

County Dublin is ideally situated on the east coast of Ireland and just a 20 minute journey will bring the visitor from the bustling city to the charming coastal towns and villages of the county which dot the sometimes rugged, sometimes sanded coastline and provide boundless opportunities for craft shopping, water sports, seafood dining and picturesque walks against the spectacular backdrop of Dublin Bay.

Enjoying Dublin

Dublin is home to the friendliest people in the world. Add to this live music, packed pubs, hip clubs and plenty of culture plus a real passion for sport and you have everything you need for a madly memorable time in Dublin!

It is no secret that Dubliners love to party. Dublin's unique spirit of fun and entertainment is evident in the many festivals and events organised throughout the year. Below are some ideas for discovering Dublin city and region:

- Visit some of Dublin's most historic sights, including Trinity College, the Book of Kells, Dublin Castle, Dublinia, Christ Church Cathedral, the Dublin Writers Museum and the Old Jameson Distillery to name but a few.
- Take part in the Literary Pub Crawl around Dublin's pubs, which have been frequented by literary luminaries, such as James Joyce, Oscar Wilde and Brendan Behan.
- Enjoy the delights of shopping around the designer stores on Grafton Street and The Powerscourt Townhouse.
- Golf at the K Club, home of the Ryder Cup 2006.
- Savour a pint of the black stuff while enjoying 360 degree views of the city in the Gravity Bar in the Guinness Storehouse.
- Enjoy a day of being pampered at one of Dublin's top Spas.
- A Treasure Hunt of Dublin City. This will take place over an hour and a half and consists of three components: the Clues round, the Scavenger hunt and the Bar challenge.
- Enjoy a day's sailing experience on a tall ship or speed around Dublin bay in high speed ribs.
- Taste your way around Dublin with the Fabulous Food Trail which showcases Irish handmade foods and artisan producers.
- Enjoy foot tapping, hand clapping traditional Irish music and dance at Johnnie Fox's pub, the Merryploughboy, the Abbey Tavern and Taylors Three Rock Pub.

DUBLIN AND THE ARTS

Dublin is a city that truly captures your imagination. Intimate as a village, sophisticated as a metropolis, friendly as your local pub, the capital city of Ireland is a centre of infinite interest and activity. Dublin embodies two very distinctly different features – its rich and varied history and cultural life which coexists happily with the ever changing, vibrant beat of contemporary life.

Dublin's illustrious literary tradition dates back over a thousand years and in 2010, Dublin was designated a UNESCO City of Literature. Birthplace of James Joyce and Nobel Prize for Literature winners William Butler Yeats, George Bernard Shaw and Samuel Beckett, and home of The Book of Kells, Dublin is a truly inspirational city.

Music and song play a large part in the artistic make-up of Dubliners. The city provides a showcase for all facets of such talent from which traditional Irish Folk musicians such as The Dubliners, The Chieftains

and contemporary artists like U2, Chris De Burgh, Sinead O'Connor and Glen Hansard have found inspiration and international popularity.

Music, whether it be classical, traditional or contemporary is very accessible in Dublin, often experienced with its natural accompaniment – dance. Visitors may try their hand at traditional set dancing or dance the night away at one of the numerous trendy night clubs that illuminate Dublin's night sky and carry the beat of the city well into the morning hours.

Internationally renowned artists are frequent visitors to the city with an abundance of first class performances as varied as the Bolshoi Ballet to the staging of rock concerts. Comedy and cabaret also feature strongly in the entertainment line-up and can be sampled at a multitude of impressive venues across Dublin.



Caravaggio, The Taking of Christ (1602), with kind permission of the Jesuit community who acknowledge the generosity of Dr. Marie Lee Wilson

The National
Concert Hall,
Dublin



National Museum
of Ireland,
Archaeology and
History, Dublin





GOLFING IN IRELAND

*Woodenbridge Golf Club,
Vale of Avoca, County Wicklow*

GOLFING IN IRELAND

Ireland is home to many challenging links and parkland golf courses set against a backdrop of a stunning and rugged landscape, which attracts golfers from around the world. With over 400 golf courses to choose from, it's a dream come true for most golfers to step in the footsteps of the greats and play on some of the world's most famous courses.

Fáilte Ireland Approved Golf Clubs

Whenever you see the 'Golf Ireland, Time to play' symbol above you can be assured that this golf club is visitor friendly and the club is committed to delivering high quality services and facilities. Ireland is the first country to set up a nationwide approval scheme for golf courses.

This scheme was launched by Fáilte Ireland in 2010 to navigate consumers towards an excellent Irish golfing experience. For more information visit our website www.discoverireland.ie/golf or contact the golf department by email: golf@failteireland.ie

Green Fees

Most clubs have special rates for visitors and groups. Some clubs have banded together and offer a special pass. Be sure to ask about any special offers from the clubs.

Caddies, Clubs, Buggies and Motorised Carts

Caddies are available at the bigger championship courses but do book ahead.

Most clubs also offer club hire. If you are looking to hire a buggy or cart do ask when you make your booking as some clubs only have a limited number.

Dress Code, Soft Spikes and Handicap Certificate

Despite the influx of fashionable young players like Rory McElroy, Irish golf is still quite traditional. Jeans shorts and trainers are frowned upon and smart casual is the safest bet. Most clubs are moving towards a policy of only allowing soft spikes so do check in advance and if you do have a handicap certificate from your local club it's worth bringing it along.



Clockwise from top-left: Wicklow Golf Club; Waterford Castle Hotel and Golf Club; Headfort Golf Club, Co. Meath; 9th Green, Blainroe Golf Club, Co. Wicklow; and 18th Green, Druids Glen Resort, Co. Wicklow.

AVERAGE FLIGHT TIMES



New York
 << 5.5 Hours


London
 1 Hour >>

Amsterdam
 1.5 Hours >>

Dubai
 6 Hours >>

COUNTY DUBLIN





DUBLIN WOULD BE
PROUD TO HAVE YOU
AND DUBLIN WILL DO
YOU PROUD

*Celtic wall markings at Newgrange Visitor Centre, Donore, Co. Meath
Constructed over 5,000 years ago (3,200 B.C.) A World Heritage Site*



Dublin
CONVENTION BUREAU

PROMOTING DUBLIN AS A WORLD
CLASS BUSINESS DESTINATION



Fáilte Ireland
National Tourism Development Authority

www.dublinconventionbureau.com

Contact details for the FIG Working Week 2019 bid

Ciaran McLoone

Dublin Convention Bureau
Fáilte Ireland
Áras Fáilte
88-95 Amiens St
Dublin 1

T: +353 1 8847 271
W: www.dublinconventionbureau.com
W: www.failteireland.ie

Dublin Convention Bureau is part of Fáilte Ireland – the national tourism authority in Ireland and supports this bid.