



Fédération Internationale des Géomètres
International Federation of Surveyors
Internationale Vereinigung der Vermessungsingenieure

14th Pacific Association of Quantity Surveyors Board Meeting

**Facing the Challenge - Building the Capacity
Towards Betterment of the Society, Environment
and Profession**

Resorts World Convention Center, Sentosa Island
Singapore
25 July 2010

CheeHai TEO
FIG Vice President
chteo.surveyor@gmail.com



Fédération Internationale des Géomètres
International Federation of Surveyors
Internationale Vereinigung der Vermessungsingenieure



Greetings from  Council & Office



Fédération Internationale des Géomètres
International Federation of Surveyors
Internationale Vereinigung der Vermessungsingenieure

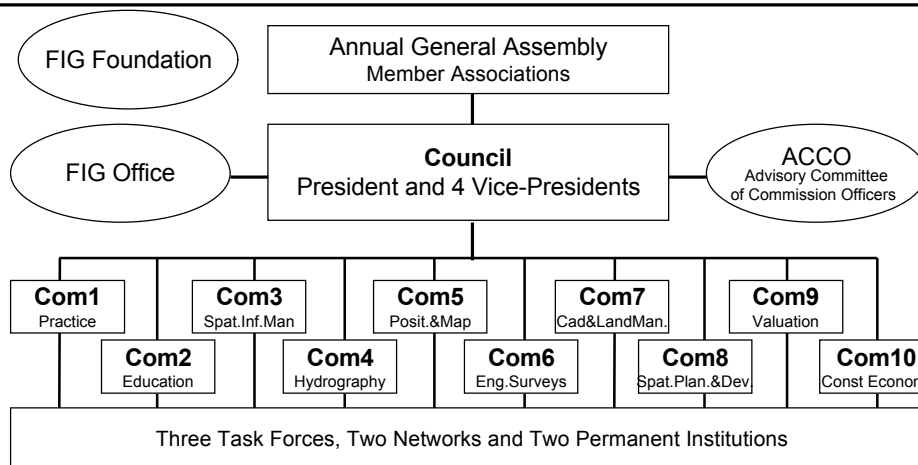
tool by ammap.com



102 FIG member associations from 83 countries
30 affiliates, 34 corporate, 18 correspondents and 85 academic members



Fédération Internationale des Géomètres
International Federation of Surveyors
Internationale Vereinigung der Vermessungsingenieure



The International Federation of Surveyors
Organizational Structure

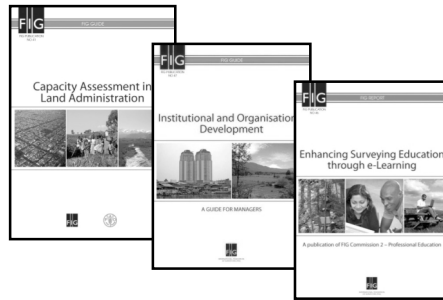


Fédération Internationale des Géomètres
International Federation of Surveyors
Internationale Vereinigung der Vermessungsingenieure

“Building the Capacity”

A broad concept – including societal, institutional and individual level.

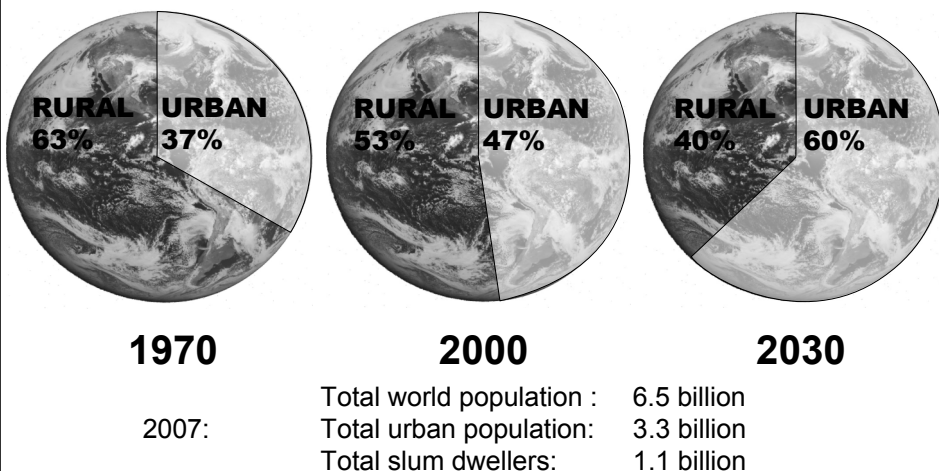
Addressed through FIG activities at all levels, council, task forces, commissions. Providing guidance for government, members associations and individual surveyors on capacity development.



CheeHai TEO
FIG Vice President
chteo.surveyor@gmail.com

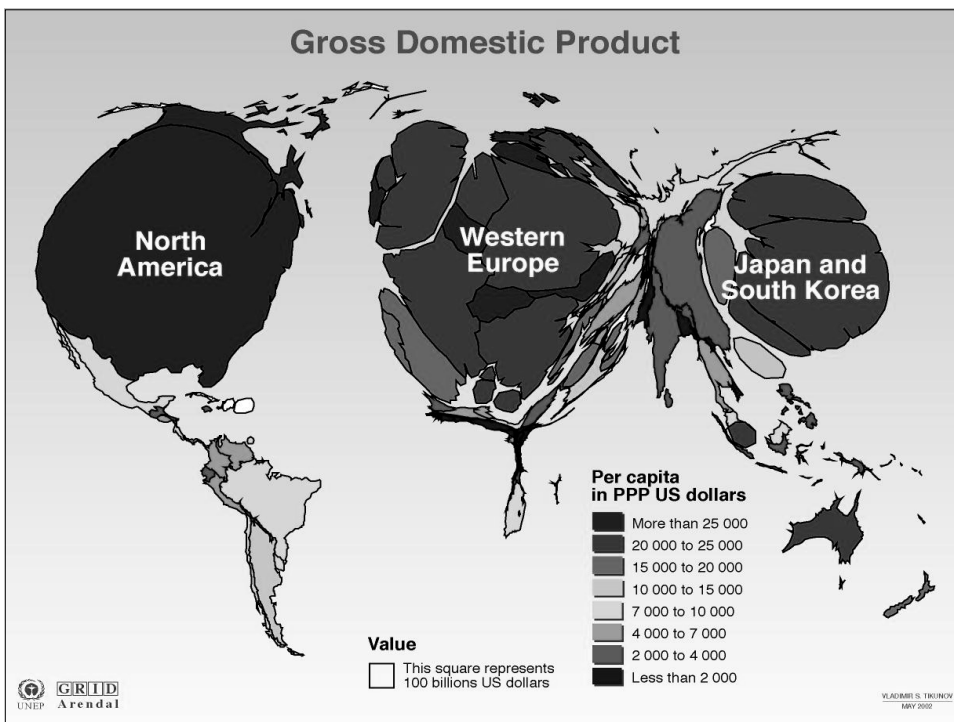


Fédération Internationale des Géomètres
International Federation of Surveyors
Internationale Vereinigung der Vermessungsingenieure



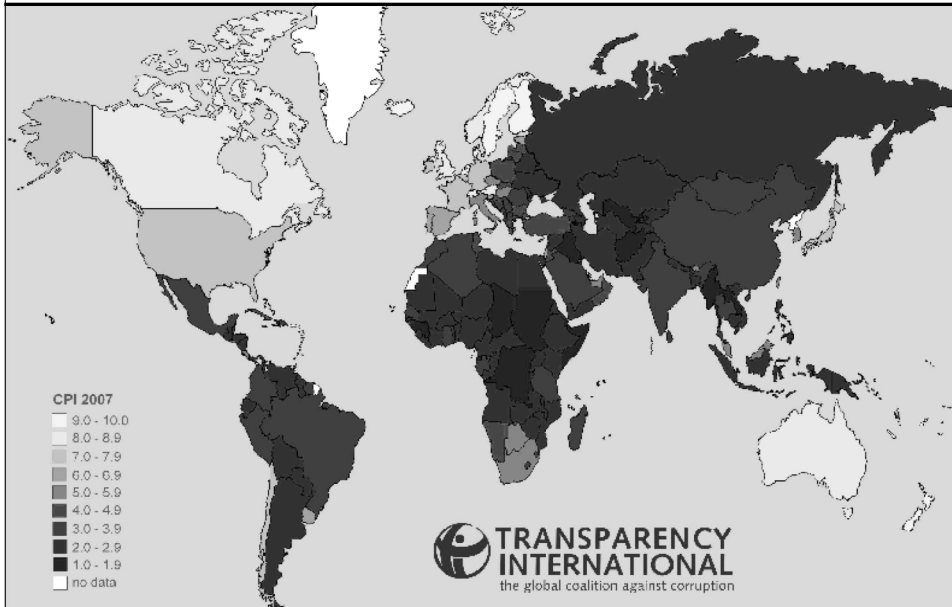
CheeHai TEO
FIG Vice President
chteo.surveyor@gmail.com

Urban Population Growth





Fédération Internationale des Géomètres
International Federation of Surveyors
Internationale Vereinigung der Vermessungsingenieure



Fédération Internationale des Géomètres
International Federation of Surveyors
Internationale Vereinigung der Vermessungsingenieure

"Few will disagree that inappropriate land policies (*land sector practices*) can constitute a serious constraint on economic and social development

. However, the complexity of the subject and the fact that change is often fiercely resisted by vested interests benefiting from the status quo have historically frustrated many efforts to bring about policy change."

(World Bank)

CheeHai TEO
FIG Vice President
chteo.surveyor@gmail.com



Fédération Internationale des Géomètres
International Federation of Surveyors
Internationale Vereinigung der Vermessungsingenieure

Good governance is:

- § Sustainable and locally responsive: It balances the economic, social, and environmental needs of present and future generations, and locates its service provision at the closest level to citizens.
- § Legitimate and equitable: It has been endorsed by society through democratic processes and deals fairly and impartially with individuals and groups providing non-discriminatory access to services.
- § Efficient, effective and competent: It formulates policy and implements it efficiently by delivering services of high quality
- § Transparent, accountable and predictable: It is open and demonstrates stewardship by responding to questioning and providing decisions in accordance with rules and regulations.
- § Participatory and providing security and stability: It enables citizens to participate in government and provides security of livelihoods, freedom from crime and intolerance.
- § Dedicated to integrity: Officials perform their duties without bribe and give independent advice and judgements, and respects confidentiality. There is a clear separation between private interests of officials and politicians and the affairs of government.

CheeHai TEO
FIG Vice President
chteo.surveyor@gmail.com

(Adapted from FAO, 2007)



Fédération Internationale des Géomètres
International Federation of Surveyors
Internationale Vereinigung der Vermessungsingenieure

MoU signed 2007

Cooperation in a range of areas:

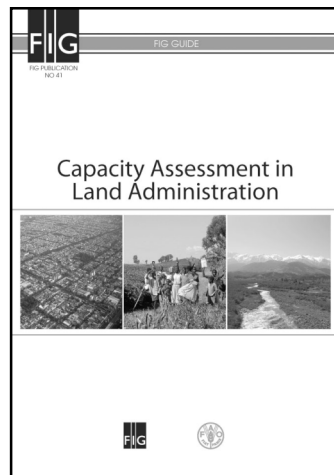
Land acquisition, expropriation and compensation

Management of state lands

Capacity building in land administration

Open source platforms in land administration

Voluntary Guidelines on Tenure of Land and other Natural resources



CheeHai TEO
FIG Vice President
chteo.surveyor@gmail.com

Partnership: FAO



Fédération Internationale des Géomètres
International Federation of Surveyors
Internationale Vereinigung der Vermessungsingenieure

MoU signed 2002

Strong partnership (from 2007) within the Global land Tool Network (GLTN) on developing pro-poor land tools. Member of the GLTN International Advisory Board

Project on **Informal Development in Europe**
Case study on Albania and Greece

Project on **Gender Evaluation Criteria** and **Social Tenure Domain Model**.

Partnership on the Global Agenda ahead – Land Governance and Transparency, Sustainable Settlement facing the mega challenges of climate change, disasters, rapid urbanisation, etc.



Improving Slum Conditions through Innovative Financing



FIG/UN-HABITAT Seminar
Stockholm, Sweden, 16-17 June 2008



CheeHai TEO
FIG Vice President
chteo.surveyor@gmail.com

Partnership: UN-Habitat



Fédération Internationale des Géomètres
International Federation of Surveyors
Internationale Vereinigung der Vermessungsingenieure

MoU signed May 2007

Strong partnership on Land Governance in support of the MDGs

Joint FIG-WB Conference March 2009 on Land Governance in support of the MDGs . More than 200 invited experts from throughout the world

Joint publication and declaration contribution to the global agenda and the global recognition of the Surveying Profession

Partnership on the Global Agenda Ahead – the contribution of Land Governance to the mega challenges of climate change, disasters, rapid urbanisation, etc.



CheeHai TEO
FIG Vice President
chteo.surveyor@gmail.com

Partnership: World Bank



Fédération Internationale des Géomètres
International Federation of Surveyors
Internationale Vereinigung der Vermessungsingenieure

Climate Change * Food Shortage * Access to Water * Energy Scarcity * Rural - Urban Migration * Urbanization * Mega Cities * Environmental Degradation * Natural Disasters * Global Financial Crisis

All these challenges relate to good governance and good management of the land sector (land tenure, land value, land use, land development) and Professionals within the natural and built environment have a **key and significant role**

CheeHai TEO
FIG Vice President
chteo.surveyor@gmail.com

Facing the Challenges



Fédération Internationale des Géomètres
International Federation of Surveyors
Internationale Vereinigung der Vermessungsingenieure



**PROPOSED MoU BETWEEN
THE PACIFIC ASSOCIATION OF QUANTITY SURVEYORS
AND
THE INTERNATIONAL FEDERATION OF SURVEYORS**

CheeHai TEO
FIG Vice President
chteo.surveyor@gmail.com



Proposal to intensify co-operation for mutual advantage and in service of the people and the profession with the following:

7 Regular contact is to be established between the two organizations in order to institute and maintain rapport and continuing engagement to address matters of common interest;

7 Each organization should inform the other of all Commissions, Working groups, etc. that it has established and invite representation from the other where it is agreed that it would be appropriate;

7 Each organization should inform the other of its programme of proposed seminars, workshops, etc. to enable joint participation should it be of mutual benefit and inform its members of these events as appropriate;

CheeHai TEO
FIG Vice President
chteo.surveyor@gmail.com



(contd)

7 Each organization should invite a representative from the other organization to attend respective Congresses/Conferences;

7 Both organizations confirm their commitment in the work to advance the science, knowledge and practice towards sustainable cost management, construction and developments, promotion of green buildings and structures, sustainable and liveable cities; and

7 Both organizations should identify opportunities to organize specialized seminars or workshops under joint sponsorship.

CheeHai TEO
FIG Vice President
chteo.surveyor@gmail.com



Fédération Internationale des Géomètres
International Federation of Surveyors
Internationale Vereinigung der Vermessungsingenieure

