

**Lantmäteriet today and tomorrow**  
 - A new way to provide strategic competence



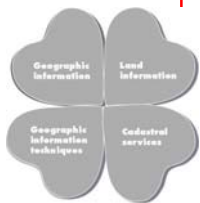
Lars Jansson  
 Deputy Director  
 General  
 Lantmäteriet

**More than 375 years of experience**

Lantmäteriet has been mapping Sweden since 1628.



**Lantmäteriet is the national:**



Mapping Agency  
 Cadastral Agency  
 Property Formation Agency

... and will soon also be the Land Registry

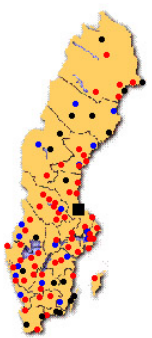
The official duties are supported by services on a repayment basis nationally and overseas.

**Staff**




Lantmäteriet has some 2000 staff members, distributed among 100 offices and with the head office in Gävle.

**Lantmäteriets offices**



- Headoffice - Gävle
- Cadastral Services and Metria
- Metria
- Cadastral Services

**Cadastral Services**





### Property formation

- Property formation through formal cadastral survey
- Maintenance of the real property register
- Handling of legal matters concerning real properties

### Cadastral Activities



### Division into property units

- part of the infrastructure of the society
- basis for market economy
- used for example for
  - environmental conservation
  - planning of new settlements
  - social planning
  - construction of road and railways



### Cadastral Activities

### Division into property units

- basis for
  - the national registration
  - property taxation
  - public administrative boundaries
- prerequisite for
  - a land market
  - long term credit facilities
- rights like leaseholds and easements are connected to the property unit

### Cadastral Activities

### Land and Cadastral Legislation

- Land Code
- Cadastral Procedure Acts
  - Real Property Formation Act
  - Adjudication and Legalisation Act
  - Utility Easements Act
  - Joint Facilities Act
  - Joint Property Units (Management) Act
- Land Data Bank Legislation

### Cadastral Activities

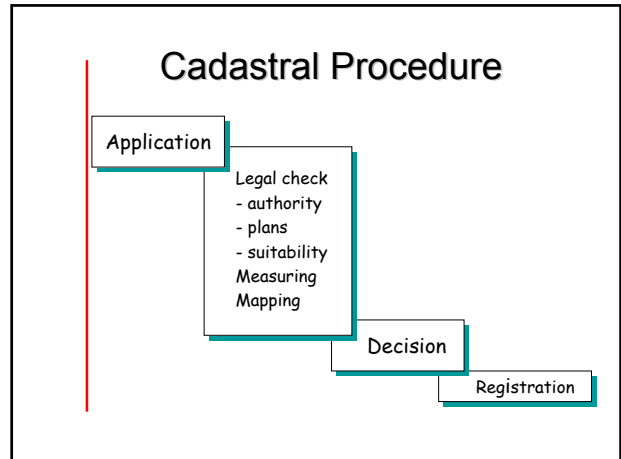
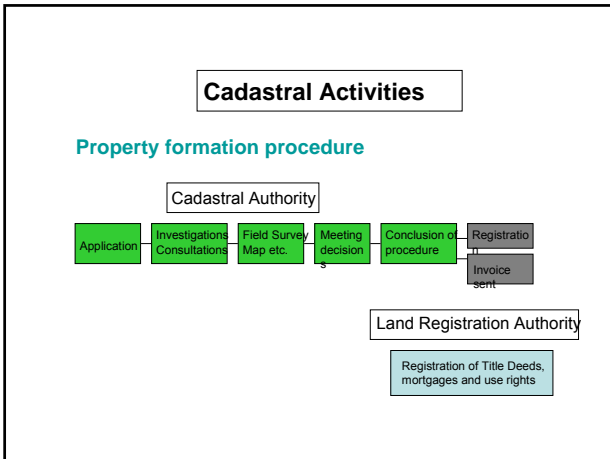
### Land and Cadastral Legislation

- Other Acts
  - Environment Code
  - Planning and Building Act
  - Roads Act
  - Railway Construction Act
  - Expropriation Act
  - Pre-emption Act
  - Public Water Areas (Boundaries) Act

### Cadastral Activities

### Cadastral Authority

- consists of a land surveyor (and in some cases two trustees)
- supported by other staff and sometimes an external expert
- carries out procedures regulated in
  - Real Property Formation Act
  - Adjudication and Legalisation Act
  - Utility Easements Act
  - Joint Facilities Act



### Cadastral Activities

#### Legal conditions

- suitable for its purpose
- in accordance with existing plans and restrictions
- consider public and private interests

### Cadastral Activities

#### Consultations

- municipal planning and building committee
- nature conservation and environmental authorities
- national road authority
- agriculture and forestry authorities

### Cadastral Activities

#### Meeting

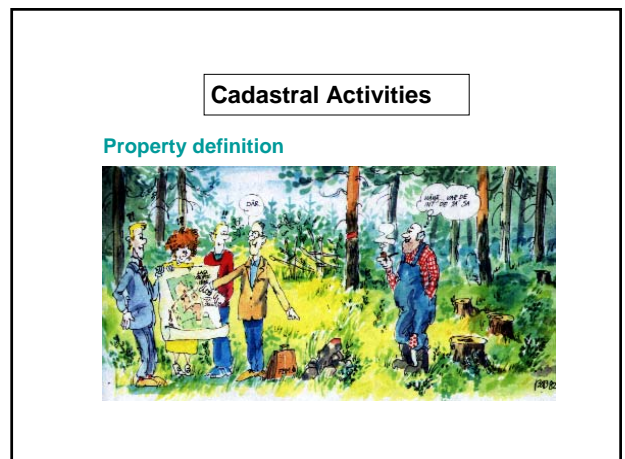
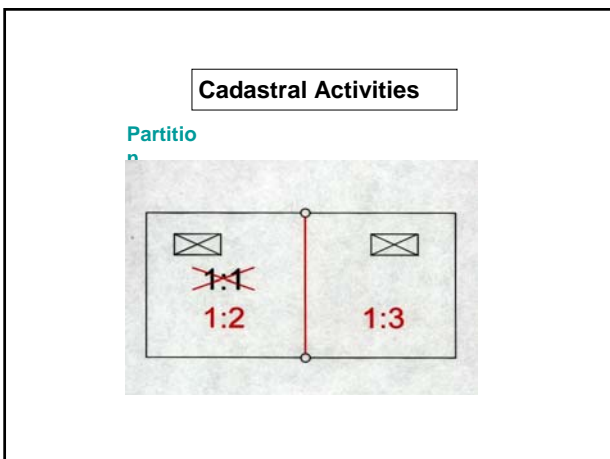
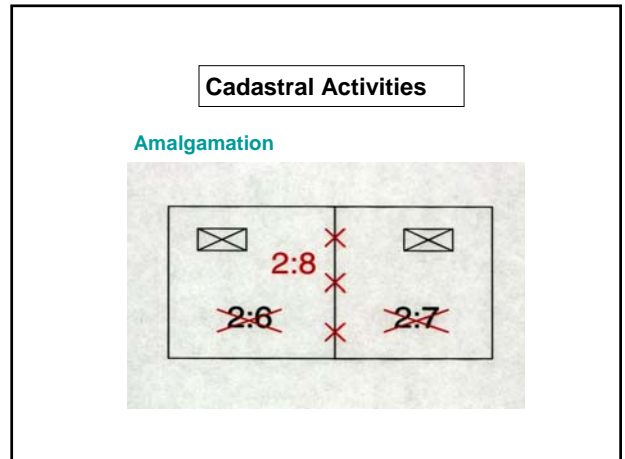
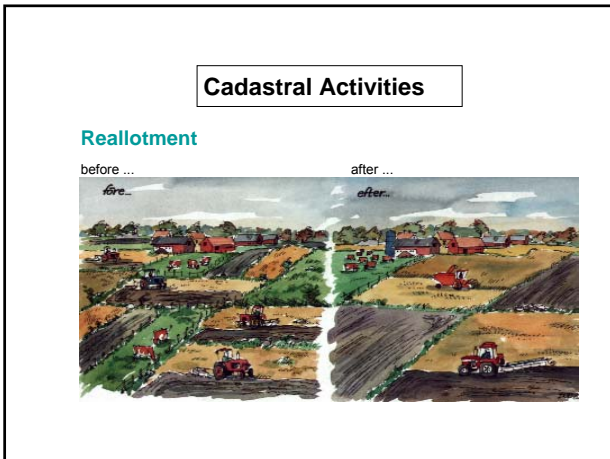
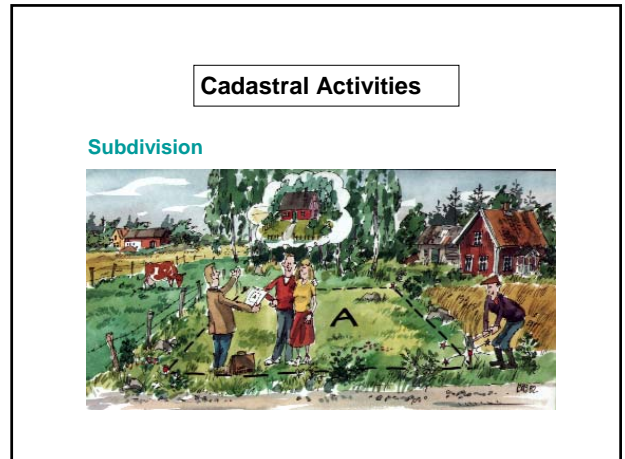
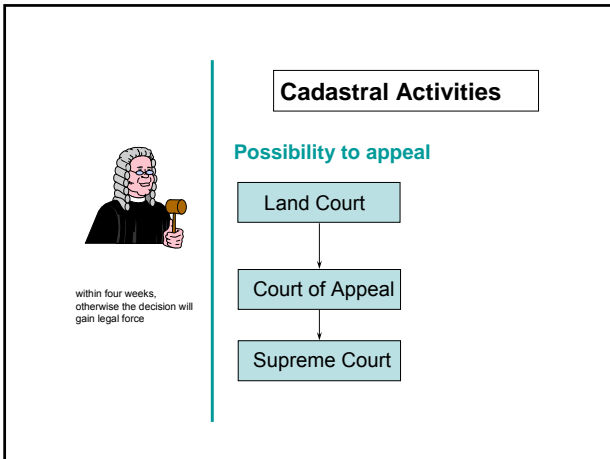
- the land surveyor leads the meeting
- interested parties:
  - legal property owners
  - holders of easements and leasehold rights
- holders of mortgages are safeguarded
- strive to attain unity
- decisions made by the land surveyor

### Cadastral Activities

#### Cadastral documents

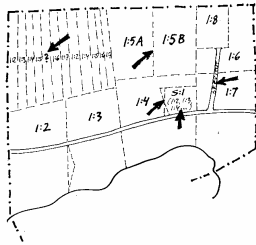
- legal description
- technical description
- cadastral map
- minutes
- appendices (document of purchase, agreements etc.)

original kept in the archives copies sent to the parties



### Cadastral Activities

#### Adjudication



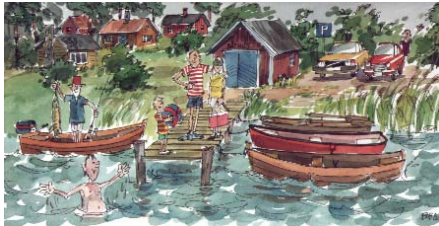
### Cadastral Activities

#### Establishment of joint facilities



### Cadastral Activities

#### Formation of joint property management associations



### Cadastral Activities

#### Utility easement procedures



### Cadastral Activities

#### Registration in the Real Property Register

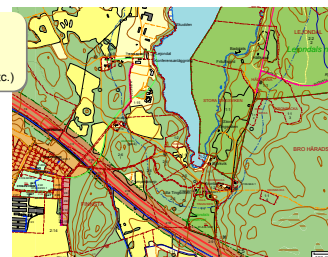


1. main register
2. cadastral index map
3. co-ordinate register
4. plan register
5. rights register
6. address register
7. joint facility register

### Cadastral Activities

#### National Digital Cadastral Index Map

- Real properties
- Plans and regulations
- Official rights to real property (easements etc.)





**Cadastral procedure - a good way to solve land acquisition and compensation**

- mutual understanding, the possibility of coercion
- active procedure where the parties take active part
- The Cadastral Surveyor investigate and consult
- balance between private and public interests
- matters are concluded through decisions
- important decisions are:
  - the right to take land in possession
  - moment of possession
  - compensation and cost apportionment
- official documentation in the real property register and cadastral index map

-----  
**A safe, simpel, impartial and cost effective procedure**

**Cadastral Authorities**

21 County  
Cadastral  
Authorities  
8 Districts



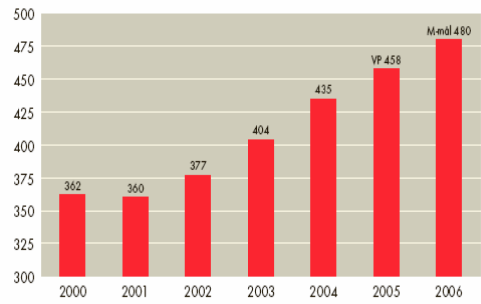
38 Municipal  
Cadastral  
Authorities



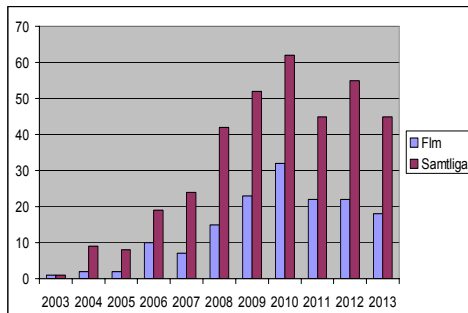
**Market**

- The nature and environmental sector
- Telephone and data communication
- The energy sector
- Railways
- Public roads
- Private roads
- New dwellings
- The forest sector
- Church - State year 2000
- Civil aviation sector
- Number of cadastral procedures: 15 000 per year
- Number of new real properties: 20 000 per year

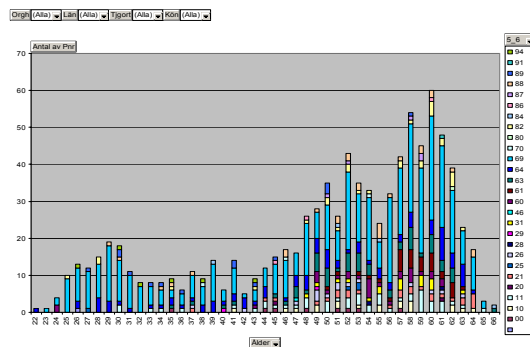
**Turnover – cadastral procedures**



**Retirements in Cadstral Services**



**Staff - ages**





## Lantmäteriet – in pole position



Ms. Angelica Oscarsson, Cadastral Surveyor  
Mr. Tomas Andersson, Cadastral Surveyor