

International Federation of Surveyors
Fédération Internationale des Géomètres
Internationale Vereinigung der Vermessungsingenieure



International Federation of Surveyors

General Assembly

MINUTES AND APPENDICES

4 and 8 May 2009

**Big Blue Hall, Dan Eilat Hotel
Eilat, Israel**

INTERNATIONAL FEDERATION OF SURVEYORS

**FIG 32nd GENERAL ASSEMBLY
4 and 8 May 2009
Big Blue Hall, Dan Hotel, Eilat, Israel**

List of Items

Monday, 4 May, 09:00-12:00 and 13:30-15:00

1. OPENING PROCEEDINGS
2. ROLL CALL
3. APPOINTMENT OF TELLERS
4. ADOPTION OF THE AGENDA
5. ADOPTION OF THE MINUTES OF THE 31st GENERAL ASSEMBLY
6. MEMBERSHIP
7. PRESIDENT'S REPORT
8. CHANGES IN THE FIG COUNCIL AND RESPONSIBILITIES OF THE COUNCIL MEMBERS

9. HONORARY MEMBER
10. ELECTION OF COMMISSION CHAIR ELECT FOR COMMISSION 8 AND 10 FOR 2009-2010
11. REPORTS FROM THE DIRECTORS OF PERMANENT INSTITUTIONS
12. REPORT OF THE PRESIDENT OF THE FIG FOUNDATION
13. REPORTS OF CURRENT TASK FORCES
14. NEW TASK FORCE ON SPATIALLY ENABLED SOCIETIES
15. NEW FIG AFRICA TASK FORCE 2009-2014
16. YOUNG SURVEYORS NETWORK
17. CO-OPERATION WITH THE UNITED NATIONS AND THE WORLD BANK
18. LIAISON WITH INTERNATIONAL PROFESSIONAL ORGANISATIONS
19. CHANGES TO THE FIG INTERNAL RULES
20. FIG ACCOUNTS FOR 2008 AND AUDITOR'S REPORT, AND BUDGET FOR 2009, 2010 AND 2011
21. SUBSCRIPTION RATES FOR 2010
22. ELECTION OF COMMISSION 8 CHAIR ELECT 2009-2010
23. COMMISSION REPORTS

Friday, 8 May, 9:00-11:00 - Presidents' Meeting (by invitation only)

24. PRESIDENTS' MEETING

Friday, 8 May, 11:30-12:30

25. ROLL CALL
26. MEMBERSHIP
27. REPORTS ON CO-OPERATION WITH THE FIG CORPORATE MEMBERS, FIG FOUNDATION AND YOUNG SURVEYORS NETWORK
28. DECISION ON THE VENUE OF THE FIG WORKING WEEK 2013
29. 7th FIG REGIONAL CONFERENCE IN HANOI, VIETNAM, 19-22 OCTOBER 2009
30. REPORT THE CONGRESS 2010 IN SYDNEY, AUSTRALIA, 11-16 APRIL 2010
31. PRESENTATION OF CERTIFICATES OF APPRECIATION

FIG 32nd GENERAL ASSEMBLY

MINUTES

of the meetings held in the Big Blue Hall at the Dan Eilat Hotel, Eilat, Israel
on the 4th and the 8th of May, 2009

MONDAY 4 MAY

First Session, Monday, 4 May, 09:00-12:00 and 13:30-15:00

1. OPENING PROCEEDINGS

President Stig Enemark opened the 32nd General Assembly and welcomed the members and delegates to Eilat, Israel.

Noted that several greetings and apologies were received from member associations, other members, Honorary Presidents Dr. Juha Talvitie and prof. Holger Magel and several Honorary Members who were no able to attend the General Assembly this time. Apologies were also recorded from Vice Presidents Dr. Dalal S. Alnagar and Mr. Teo CheeHai who were also unable to participate.

2. ROLL CALL

Vice President Matt Higgins took the roll call. The roll call was made only for member associations and affiliate members. Delegates representing academic members, corporate members and correspondents as well as honorary presidents and honorary members were entered in the records based on their registrations to Mr. John Neel, the new General Manager of FIG at the meeting venue.

Recorded that based on the decision of the General Assembly in 2006 only those member associations that had paid all their membership fees to the end of 2008 are allowed to vote at the meeting. A list of member associations that are not allowed to vote was published on the FIG web site as per 30 April 2009.

Appendix to items 2 & 25: Roll Call.

37 member associations out of 99 were present at this session, which is more than one third of the membership needed for the General Assembly to be constitutionally valid. 35 member associations were allowed to vote.

Motion: That present members are recorded in the minutes.

Decision: The motion was adopted.

3. APPOINTMENT OF TELLERS

Motion: The General Assembly shall appoint two persons as tellers following the principle adopted at the 22nd General Assembly so that the tellers will represent member associations hosting the preceding (the Swedish Association of Chartered Surveyors, SLF – from 1.1.2009 ASPECT – Association for Chartered Surveying, Property Evaluation and Transactions) and the current General Assembly (the Association of Licensed Surveyors in Israel, ALSI). That the General Assembly appoints Ms. Cecilia

Lindén from ASPECT and Mr. Yoav Tal from ALSI as a teller for the two sessions of the General Assembly.

Decision: The motion was adopted.

4. ADOPTION OF THE AGENDA

Motion: That the agenda be adopted.

Decision: The motion was adopted.

5. ADOPTION OF THE MINUTES OF THE 31ST GENERAL ASSEMBLY

Minutes have been circulated previously. The Council did not have any follow-up issues rising from the minutes that needed to be discussed with the General Assembly. The members had neither raised any issues on the minutes prior the meeting.

Appendix to item 5: Minutes of the General Assembly in Stockholm, Sweden, June 2008, without appendices.

Motion: That the minutes be adopted as recorded.

Decision: The motion was adopted.

6. MEMBERSHIP

6.1 Acceptance of new members

6.1.1 Association des Géomètres Experts du Niger (AGEN)

Association des Géomètres Experts du Niger (AGEN) (Association of Niger Surveyors) has submitted an application to become a member association of FIG from Niger. The association has been constituted in January 2006 by a law on the order of surveyors. The association has currently 50 members. The application meets the criteria for membership in FIG as a member association. The Council has considered the application and believes that the association meets criteria for membership of FIG as a member association.

Appendix to item 6.1.1: Membership application from the Association des Géomètres Experts du Niger (AGEN)

Motion: That the General Assembly admits the Association des Géomètres Experts du Niger (AGEN) to become a member association of FIG.

Decision: The motion was adopted.

6.2 Other membership issues

Affiliate membership

Nepal was expelled from FIG affiliate membership in Stockholm because of unpaid membership fees. After the meeting Survey Department, Government of Nepal wanted to restore the membership after changes in the structure of the Nepalese government and has paid most of the arrears. The Council has therefore restored the affiliate membership the Survey Department, Government of Nepal.

After this change the number of affiliate members is 28.

Corporate members

The Council has admitted the following three companies to become a Corporate Member of FIG:

- Magellan Navigation, USA (Corporate level C)
- REIDIN.com, United Arab Emirates (Corporate level F)
- ORBITS Engineering Firm, Saudi Arabia (Corporate level F)

The number of corporate members is now 36.

Academic members

The Council has admitted the following six universities and institutions to become an academic member:

- Institute of Land Administration, Bahir Dar University, Ethiopia
- School of Civil Engineering and Geosciences, Newcastle University, United Kingdom
- Palestine Polytechnic University, Hebron, Palestine Authority
- National Research Institute of Astronomy & Geophysics, Egypt
- Technion – Israel Institute of Technology, Mapping and Geo-Information Engineering, Israel
- Universidad Autónoma de Nuevo León, Topography Department of the Civil Engineer Institute, Mexico

The Council has decided to expel following academic members because their membership fees are more than two years in arrears. This list has been updated based on the payments and information given during the General Assembly.

- Universidad de San Carlos de Guatemala, Faculty of Agronomy, Guatemala
- Ferris State University, Surveying Engineering, USA

The number of Academic Members after these changes is 83.

Motion: That the General Assembly notes the actions that the Council has taken with other membership matters.

Decision: The motion was adopted. Dr. Yerach Doytsher from Israel Institute of Technology, Mapping and Geo-Information Engineering was given the membership certificate for Technion, Israel.

7. PRESIDENT'S REPORT

The President has prepared a report on the activities of the President and the Council between the General Assembly in Stockholm and Eilat.

The President gave a presentation on the Role of FIG in contribution to professional development and the global agenda. This presentation is available on the FIG web site as a PowerPoint presentation for members to use in explaining the role of FIG to their members and partners. The presentation can be downloaded from: www.fig.net/admin/images/fig_general_president_may_2009.ppt

Appendix to item 7: President's report.

Appendix to minutes' item 7: Role of FIG in contribution to professional development and the global agenda. Handouts of the presentation given by President Stig Enemark.

Motion: That the General Assembly accepts the President's report.

Decision: The motion was adopted.

8. CHANGES IN THE FIG COUNCIL AND RESPONSIBILITIES OF THE COUNCIL MEMBERS

The General Assembly elected Mr. Iain Greenway from United Kingdom and Mr. Teo CheeHai for a Vice President of FIG for 2009-2012. At the same time the term of office of Mr. Ken Allred from Canada and Prof. Paul van der Molen from the Netherlands finished at the end of 2008.

The Council has agreed on responsibilities of the Council members after the new Vice Presidents Teo CheeHai and Iain Greenway took the office 1 January 2009. The revised list of responsibilities responds to the professional qualifications of the Council members as well as to their regional distribution.

Appendix to item 8: Responsibilities of Council members 2009-2010

Motion: That the General Assembly records it thanks to Mr. Ken Allred and Prof. Paul van der Molen for the services that they have provided for the Federation over many years as Council members. That the General Assembly further records the new Vice Presidents and records that they have received their FIG officer badge at the Council meeting in February 2009. That the General Assembly further endorses the list of responsibilities for the Council members for 2009-2010.

Decision: The motion was adopted. The General Assembly also expressed its thanks with acclamation to Mr. Ken Allred and Prof. Paul van der Molen who was present at the meeting.

9. HONORARY MEMBER

The Canadian Institute of Geomatics has proposed to the Council that Mr. Ken Allred would be awarded with the Honorary Membership of FIG. Ken Allred is an immediate past Vice President of FIG (2005-2008) and has been active in FIG for more than 25 years. In addition following contributions from Ken Allred to FIG should be mentioned:

- Commission 1 Chair 1994-1998 and Vice Chair 1990 – 1994
- Canadian delegate on FIG Commission 1 - Professional Practice from 1981 until 2005
- Member of the organizing committee for the FIG Symposium on the Decision Maker and LIS in Edmonton in 1984
- Member on the FIG Task Forces on the Exchange of Surveying Personnel; on Constituting Professional Associations; and on Cultures and Languages
- Chair of the Task Force on FIG Governance Structure
- Director of the FIG Foundation (2005-2008)
- regular attendee at FIG congresses since 1977 to which he has presented numerous papers and participated in various workshops.

Appendix to item 9: The nomination letter from the Canadian Institute of Geomatics and CV of Mr. Ken Allred.

According to the Statutes paragraph 3.1.7 an individual who has materially assisted the development and promotion of the surveying profession at the international level can be appointed as an honorary member. Nomination for this appointment shall be made by a member association or the Council, which will consider it and submit it to a vote of the General Assembly.

The Council has considered the proposal and decided to propose to the General Assembly that it appoints Mr. Ken Allred as an Honorary Member of the Federation for the outstanding services he has provided to the Federation in different positions and functions.

Mr. Daniel Roberge made a presentation on the appointment to the General Assembly on behalf of CIG.

Motion: That the General Assembly appoints Mr. Ken Allred an Honorary Member of FIG.

Decision: The General Assembly appointed Mr. Ken Allred as an Honorary Member of FIG with acclamation. Mr. Allred will be presented his badge with silver oak leaves and certificate of Honorary Membership by the CIG in Canada.

10. ELECTION OF COMMISSION CHAIR ELECT FOR COMMISSION 8 AND 10 FOR 2009-2010

According to the FIG Statutes and Internal Rules the General Assembly appoints Commission Chairs Elect at its meeting two years prior to the Congress. These Chairs Elect will then automatically become Chairs of the Commissions for the next term of office. At the meeting in Stockholm all other Chairs Elect were appointed except Commission 8 and 10.

The Council has asked for nominations for candidates to these two commissions. For Commission 8 two nominations were received:

- Mr. Wafula Nabutola, Kenya (ISK)
- Dr. Richard Sliuzas, the Netherlands (GIN)

Appendix to item 10 and 22: Nomination templates of candidates to Commission 8 Chairs Elect for 2009-2010:

- Mr. Wafula Nabutola, Kenya (ISK)
- Dr. Richard Sliuzas, the Netherlands (GIN)

The Council has evaluated the nominations and considers that both candidates are well qualified to chair Commission 8 in the future and thus decided to propose to the General Assembly that it makes the election between these two candidates.

At the first session of the General Assembly Prof. Paul van der Molen, GIN introduced Dr. Sliuzas and Mr. Mwenda Makathima, Chairman of ISK introduced Mr. Nabutola for the General Assembly. The election will take place at the end of the first session of the General Assembly.

As there are no nominations for Commission 10, the Council has decided that it will propose to the General Assembly in Sydney that Commission 10 will be terminated unless there will be a candidate by the end December 2009. In the case that Commission 10 will be closed, its activities will be moved to appropriate Commission(s) as to be agreed with ACCO and decided by the General Assembly.

Motion: That the General Assembly notes the presentations and decides to make the election at the end of the first session of the General Assembly on the 4th May 2009.

Decision: The motion was adopted.

11. REPORTS FROM THE DIRECTORS OF PERMANENT INSTITUTIONS

11.1 International Office of Cadastre and Land Records (Office International du Cadastre et du Régime Foncier) OICRF

Prof. Paul van der Molen, Director of OICRF has prepared a report on the OICRF activities since the General Assembly in Stockholm. He made a short subsequent oral report at the General Assembly.

Appendix to item 11.1: Report from the International Office of Cadastre and Land Records (Office International du Cadastre et du Régime Foncier) OICRF.

Motion: That the General Assembly adopts the report and records its thanks to the Director and the members of the permanent institution for their past year's work.

Decision: The motion was adopted.

11.2 International Institution for the History of Surveying and Measurement, Permanent Institution of FIG

Mr. Jan de Graeve, President of the IIHSM and Mr. Jim Smith, Secretary of IIHSM have prepared a report on the IIHSM activities since the General Assembly in Stockholm.

An FIG Publication on the IIHMS and its achievements is under preparation and is expected to be launched during 2009.

Appendix to item 11.2: Report from the International Institution for the History of Surveying and Measurement, Permanent Institution of FIG.

Motion: That the General Assembly adopts the report and records its thanks to the Director and the members of the permanent institution for their past year's work.

Decision: The motion was adopted.

12. REPORT OF THE PRESIDENT OF THE FIG FOUNDATION

Mr. John Hohol, President of the FIG Foundation has prepared a report on the FIG Foundation activities from June 2008 to February 2009. He made a subsequent oral report at the General Assembly focussing on the grants and new scholarship programme of the FIG Foundation.

The FIG Council has appointed Mr. Warwick Watkins from Australia as a new Director in the Board of Directors for 2009-2010 after Ken Allred's term of office in the Council and in the Board was concluded at the end of 2008. The new Council representative in the Board of Directors is Vice President Iain Greenway.

Appendix to item 12: Report of the FIG Foundation activities June 2008 – February 2009.

Motion: That the General Assembly adopts the report of the President of the FIG Foundation and records its thanks to the President and members of the Board of Directors of the FIG Foundation for their past year's work. That the General Assembly records its thanks to Ken Allred as Director in the FIG Foundation and endorses the appointment of Warwick Watkins as new Director for 2009-2010.

Decision: The motion was adopted.

13. REPORTS OF CURRENT TASK FORCES

At the moment FIG has two Task Forces: 1) Institutional and Organisational Development, chaired by Iain Greenway; and 2) Developing Global Land Tools for Pro Poor Land Management, chaired by Paul van der Molen (including the FIG/UN-HABITAT co-operation in Global Land Tool Network and developing Social Tenure Domain Model).

Iain Greenway has prepared a report on the progress of the Task Force on Institutional and Organisational Development. He made an oral presentation at the meeting.

Appendix to item 13: Report on the Task Force on Institutional and Organisational Development

Appendix to minutes' item 13: Handouts of Iain Greenway's presentation on the Task Force on Institutional and Organisational Development

The tasks of the Task Force on Developing Global Land Tools for Pro Poor Land Management (www.fig.net/tf/landtools/index.htm) have in fact been taken over by the President because of change in the policies of UN-HABITAT. The FIG activities with UN-HABITAT are now concentrated in the Global Land Tool Network where President Enemark is representing FIG in the International Advisory Board and in the project on Social Tenure Domain Model. The President reports on these under agenda item Co-operation with the United Nations.

Motion: That the General Assembly records the reports and its thanks to the Chairs of the Task Forces and their members.

Decision: The motion was adopted.

14. NEW TASK FORCE ON SPATIALLY ENABLED SOCIETIES

The Council has decided in February 2009 to establish a new short term Task Force with the aim to explore the issue of Spatially Enabled Societies (SES) from a cadastral and surveyor's point of view. Dr. Daniel Steudler from Switzerland has been appointed to chair this task force with following members: Dr. Abbas Rajabifard (President elect of GSDI), Kari Strande (Norway), and Teo CheeHai (Vice President, Malaysia). The results of the Task Force will be published in a report that will be launched at the FIG Congress 2010.

Dr. Daniel Steudler presented the task force at the General Assembly.

Appendix to item 14: Terms of Reference for the FIG Task Force on Spatially Enabled Societies.

Motion: That the General Assembly adopts the establishment of the FIG Task Force on Spatially Enabled Societies and endorses its terms of reference.

Decision: The motion was adopted.

15. NEW FIG AFRICA TASK FORCE 2009-2014

The Council established in February 2009 a new FIG Africa Task Force for the term of office 2009-2014. The Task Force focus is on the African Surveying Profession and how it can best contribute to meet the key challenges of poverty alleviation, economic growth, and environmental sustainability. The key purpose is to enable the surveying profession in Sub Saharan Africa to deal with social responsibility in terms of contributing to achieving the MDGs. The Council appointed Dr. Diane Dumashie, current Chair of FIG Commission 8, United Kingdom, to chair this Task Force. Members

of the Task Force will include key persons anticipated to be representatives from East, South, Central and Western African countries.

Dr. Diane Dumashie made a presentation on the Africa Task Force for the General Assembly.

Appendix to item 15: Terms of Reference for the FIG Africa Task Force.

Motion: That the General Assembly adopts the establishment of the FIG Africa Task Force for 2009-2014 and endorses its terms of reference.

Decision: The motion was adopted.

16. YOUNG SURVEYORS NETWORK

The Young Surveyors Working Group under Commission 1 has made a good progress and achieved great results at the Working Week in Stockholm in June 2008 including special programme for students and young surveyors and speed mentoring. Some of these activities were proposed to be included as permanent components in future FIG events. The Council decided in February 2009 to give the Young Surveyors Working Group a more visible role on the FIG agenda and therefore established the Young Surveyors Network. The Network would give the group more independency and recognises its cross commission nature. Formally the Network will stay as a working group under Commission 1 in the same way as the Standards Network has today. The Council also recognised that to develop the work of the Young Surveyors Network to more professional and consistent level some financial support will be needed. This can be partly arranged through the proposed special reserves in the budget, but it is equally important to get the member associations to understand their role and responsibility in this respect.

Appendix to item 16: Terms of Reference of the Young Surveyors Network.

Appendix to minutes' item 16: Handouts of Cecilia Lindén's presentation on the Young Surveyors Network

Ms. Cecilia Lindén as chair of the Young Surveyors Network made a presentation on the network activities for the General Assembly. The President expressed his wish to the member associations that they support young surveyors to participate the network and also to appoint young surveyors in the board of national associations.

Motion: That the General Assembly adopts the establishment of the Young Surveyors Network and endorses its terms of reference and the appointment of Ms. Cecilia Lindén from Sweden as the chair of the Network until the end of 2010.

Decision: The motion was adopted.

17. CO-OPERATION WITH THE UNITED NATIONS AND THE WORLD BANK

As part of the Work Plan 2007-2010 the Council has established the UN Liaison Committee – FIG Responses to the Millennium Development Goals to coordinate co-operation with the United Nations and the World Bank. The Liaison Committee is chaired by the President. The Council appointed in February 2009 Prof. Paul van der Molen, the Netherlands, as the FIG Liaison Ambassador for the United Nations for 2009-2010.

President and the Liaison Committee have prepared a report on the co-operation between FIG and the United Nations including the World Bank since the General Assembly in Stockholm.

The main issues in the co-operation with the United Nations and the World Bank during this period have been:

- Attendance to the 4th World Urban Forum organised by UN-HABITAT in Nanjing, China, 4-8 November 2008 including the meetings of the Global Land Tools Network
- Co-operation with UN FAO including the joint FIG/FAO/CNG International Symposium in Verona, Italy, 9-10 September 2008
- The Joint FIG/World Bank International Conference on Land Governance in Support of the Millennium Development Goals: Responding to New Challenges, Washington DC, USA, 9-10 March 2009
- Participation to the work of the International Committee on Global Navigation Satellite Systems (ICG)

Appendix to item 17: Report on the co-operation between FIG and the United Nations and the World Bank.

President Stig Enemark made a presentation on the United Nations activities to the General Assembly.

Motion: That the General Assembly adopts the report on the co-operation between FIG and the United Nations, its agencies and the World Bank and records its thanks to the members of the Liaison Committee and all those who have contributed to this co-operation.

Decision: The motion was adopted.

18. LIAISON WITH INTERNATIONAL PROFESSIONAL ORGANISATIONS

The Joint Board of Spatial Information Societies JB-GIS was formally established during the FIG Working Week in Cairo in 2005 and meets annually during a major conference. The meeting of JB-GIS in 2008 was held in conjunction to the XXI ISPRS Congress in Beijing, China in July 2008. The meeting included some fruitful information on current activities and discussions on future cooperation and collaboration between the organisations. A key issue was development of the Geographic Information Knowledge Network (GIK Network) that is a huge common project led by GSDI to serve the global geographic information community at large. The goal of this facility is to enhance communications and sharing among geospatial specialists and organisations from all nations. Another key project is about establishing an ad hoc committee on Risk and Disaster Management.

FIG has further bilateral agreements of co-operation with several other international associations like ISM, IFHP, CIB, ION, ICEC, FIABCI and IFHS. Some of the partners are also working together in the Habitat Professionals Forum. President Stig Enemark has been acting as Chairperson of the Habitat Professionals Forum until the end of 2008 when the chairmanship was moved over to the President of IFHP.

FIG is a member of the International Council for Science (ICSU) and working together with ISO and International Valuation Standards Committee (IVSC) on standards.

President Stig Enemark made a presentation on the co-operation with partner professional associations welcoming partner association representatives to the Working Week: President Orhan Altan, ISPRS, President Bas Kok, GSDI and President Henning Elmstroem, CLGE.

Motion: That the General Assembly confirms the report on the liaison with other international associations.

Decision: The motion was adopted.

19. CHANGES TO THE FIG INTERNAL RULES

The FIG General Assembly endorsed the FIG Statutes and Internal Rules in Stockholm in June 2008. After the meeting geosuisse from Switzerland has sent the Council a letter proposing two changes to the FIG internal rules related to nominations for elections. These proposals are: 1) Candidate shall decide clearly for which function he/she will apply and to omit multiple choice applications; 2) Same association should not lead more than one commission at the same time.

The Council has considered these proposals and decided to propose to the General Assembly to add a new Internal Rule 9.4 § and to change Internal Rules 11.4 § and 11.8 § that take into account the proposals of geosuisse. In addition to the geosuisse's proposal the Council decision includes a change into the Internal Rules so that it will not be possible for a current Commission Chair or Chair Elect to stand up as a candidate for the Council or other position in the Federation so that the terms of office would overlap.

Appendix to item 19: Changes to Internal Rules.

Motion: That the General Assembly approves the proposed new Internal Rule 9.4§ and proposed changes to Internal Rules 11.4 § and 11.8 §.

Decision: The motion was adopted.

20. FIG ACCOUNTS FOR 2008 AND AUDITOR'S REPORT, AND BUDGET FOR 2009, 2010 AND 2011

Vice President Iain Greenway and General Manager John Neel have prepared a report on the FIG Financial Issues. Iain Greenway will present the report to the General Assembly. This report includes summary of 2008 accounts, an updated budget for 2009 and proposals for budgets 2010-11 with notes.

The Auditors Report includes the auditors report from 2008, official accounts (income statement 2008) and balance sheet 31 December 2008.

Appendix to item 20: Report on Financial Issues (including 2008 accounts and budgets 2009-2011)

Annexes:

20A Auditor's Report, Income Statement for 2008 and Balance Sheet at 31 December 2008.

20B Financial reporting template

20C FIG Budgets 2009-2011

20D List of member associations whose membership fees are in arrears for 2008 and earlier and that are not allowed to vote was published on the FIG web site 30 April 2009.

Appendix to minutes' item 20: Handouts of Iain Greenway's presentation on finances.

In the discussion Mr. Steven Nystrom (Appraisal Institute, USA) expressed thanks to Iain Greenway for the finances and improved reporting system. He asked about the impact of the finance crises on the FIG finances in 2009. Iain Greenway confirmed that the arrears at the end of April are lower than in 2008.

Mr. Steve Jackson (ICES, United Kingdom) asked about the investment policies. It was confirmed that all investments are in cash deposits using Euro and Danish crone.

Mr. Michael Doran (RICS, United Kingdom) asked about the principles in determining bad year in subscription terms. Iain Greenway explained that the Council will consider this carefully and this is why the review will be made biennial basis.

Honorary President Robert Foster, USA expressed his thanks on the improved finance situation and reporting and raised the issue whether an internal auditing system from the General Assembly could be considered. The Council will consider this when it discusses the finance reporting system next time. At the time the official auditing system has been considered to be sufficient together with the reporting on the reserves to the General Assembly.

Motion: That the General Assembly approves following motions from the finance report:

- changes to the financial reporting template, presented as Annex 20B
- creation of general and specific reserves for FIG, as described in section 5 of the finance report (including commission reserves; office development activities; support for very poor member associations; support for Task Forces; and activities with young surveyors
- that the General Reserve will be managed by the Council in the range 90-100% of regular annual expenditure, and that Council will review this range every two years (when agreeing the work plan for each new Council, and at the mid-term review of the work plan.

That the General Assembly adopts the audited accounts for 2008 and budgets for 2009–2011.

Decision: The General Assembly adopted

1. the audited accounts for 2008 as presented;
2. changes to financial reporting template;
3. creation of general and specific reserves for FIG and their management as proposed; and
4. budgets for 2009-2011 as proposed (after confirmation of subscription rates).

21. SUBSCRIPTION RATES FOR 2010

The General Assembly has to set levels of fees for member associations two years in advance of the year in which they become payable. Fees are payable in respect of each individual member up to a maximum of 4,000 members; member associations with more than 4,000 members are paying fees in accordance with a sliding scale. Membership fees have been discussed as part of the finance report, **appendix to item 20**.

The 2008 General Assembly approved membership fees for 2010 as follows:

<u>Year</u>	<u>Per capita fee</u>	<u>Minimum fee</u>	<u>Maximum fee</u>
2009	4.18 € per member up to a maximum of 4,000 members. Member associations from countries listed by the World Bank as low-income economies or lower-middle-income economies shall pay 2.09 € per member up to a maximum of 4,000 members.	200 EUR	136 per cent of the fee payable by an association with 4,000 members
2010	4.30 € per member up to a maximum of 4,000 members Member associations from countries listed by the World Bank as low-income economies or lower-middle-income economies shall pay 2.15 € member up to a maximum of 4,000 members.	200 EUR	139 per cent of the fee payable by an association with 4,000 members (equal to 5,440 members).

The World Bank lists of the low-income economies and the lower-middle-income economies are available at:

<http://web.worldbank.org/WBSITE/EXTERNAL/DATASTATISTICS/0,,contentMDK:20421402~pagePK:64133150~piPK:64133175~theSitePK:239419,00.html>

On consideration of the table above, and in light of comments by a number of (small and large) member associations, the Council proposes two structural changes:

- To fix the sliding maximum scale for subscriptions at 5,500 members from 2010;
- To reduce the minimum number of members used in calculating the subscription to 20, and the minimum annual subscription to €50 (whichever of the two figures is the greater). This is to address particular concerns raised by some African countries.

In addition, the Council has reflected on the size of the FIG reserve, and the current financial situation. The Council believes that the finances of the Federation are healthy enough to freeze 2010 subscriptions at 2009 levels. Recognising the impacts of the current economic situation on all members, Council therefore proposes that the General Assembly amend the subscription rates for member associations for 2010, and sets 2011 subscriptions as in the table below:

<u>Year</u>	<u>Per capita fee</u>	<u>Minimum fee</u>	<u>Maximum fee</u>
2009	4.18 € per member up to a maximum of 4,000 members. Member associations from countries listed by the World Bank as low-income economies or lower-middle-income economies shall pay 2.09 € per member up to a maximum of 4,000 members.	200 €	136 per cent of the fee payable by an association with 4,000 members
2010	4.18 € per member up to a maximum of 5,500 members. Member associations from countries listed by the World Bank as low-income economies or lower-middle-income economies shall pay 2.09 € per member up to a maximum of 5,500 members.	20 members or 50 € (whichever is greater)	5,500 members (22,290 €)
2011	4.30 € per member up to a maximum of 5,500 members Member associations from countries listed by the World Bank as low-income economies or lower-middle-income economies shall pay 2.15 € member up to a maximum of 5,500 members.	20 members or 50 € (whichever is greater)	5,500 members (23,560 €)

The Council intends to follow the same principle of freezing 2010 subscriptions at 2009 levels when setting subscription levels for other categories of members.

The Council proposes to the General Assembly to increase membership fees for member associations for 2011 with 2.9 per cent to 4.30 € per member from 2010.

Motion: That the General Assembly adopts following membership fees payable by member associations in 2010 and 2011:

<u>Year</u>	<u>Per capita fee</u>	<u>Minimum fee</u>	<u>Maximum fee</u>
2010	4.18 € per member up to a maximum of 5,500 members. Member associations from countries listed by the World Bank as low-income economies or lower-middle-income economies shall pay 2.09 € per member up to a maximum of 5,500 members.	20 members or 50 € (whichever is greater)	5,500 members (22,290 €)
2011	4.30 € per member up to a maximum of 5,500 members Member associations from countries listed by the World Bank as low-income economies or lower-middle-income economies shall pay 2.15 € member up to a maximum of 5,500 members.	20 members or 50 € (whichever is greater)	5,500 members (23,560 €)

Decision: The motion was adopted.

22. ELECTION OF COMMISSION 8 CHAIR ELECT 2009-2010

The General Assembly has listened to the presentations on the two candidates for the position of Commission 8 Chairs Elect earlier at this session. The election takes place in this session. The term of office of the elected Chair Elect will be 4.5.2009-31.12.2010. Under normal circumstances the Chair Elect will be automatically elected as Chair of his Commission for the term of office 1.1.2011-31.12.2014. According to the Internal Rules the election takes place with blind ballots.

The election takes place between following candidates:

- Mr. Wafula Nabutola, Kenya (ISK)
- Dr. Richard Sliuzas, the Netherlands (GIN)

Appendix to item 10 and 22: Nomination templates of candidates to Commission 8 Chairs Elect for 2009-2010:

- Mr. Wafula Nabutola, Kenya (ISK)
- Dr. Richard Sliuzas, the Netherlands (GIN)

Motion: That the General Assembly elects the Chair Elect to Commission 8.

Decision: At the election 35 votes were given. Mr. Wafula Nabutola got 24 votes and Dr. Richard Sliuzas 11 votes, so Wafula Nabutola from ISK, Kenya was appointed to Chair Elect of Commission 8 for period 4.5.2009-31.12.2010.

23. COMMISSION REPORTS

Vice President Matt Higgins, Chair of ACCO made an introduction presentation on behalf of the ACCO on the Commission activities and on results of the ACCO meeting that was held in Eilat 3 May 2009. In his presentation he raised a few questions that were discussed with the FIG members at the meeting. At the General Assembly more than one hour was reserved for a podium discussion with Commission chairs. The discussion was chaired by Matt Higgins. Each Commission presented one topic on Commission highlights and one on its future challenges.

Each Commission Chair has submitted a written report on their Commission activities since the FIG Working Week in Stockholm. These reports include progress reports of the Commission working groups. Each Commission will hold an annual or other meeting during the Working Week in Eilat.

Appendices to item 23: Commission reports:

- Commission 1
- Commission 2
- Commission 3
- Commission 4
- Commission 5
- Commission 6
- Commission 7
- Commission 8
- Commission 9
- Commission 10

Appendix to minutes' item 23: Handouts of Matt Higgins's presentation on the Commission activities.

Motion: That the General Assembly adopts the reports of the Commission chairs and records its thanks to the chairs and other officers of the Commissions for their past year's work. That the General Assembly endorses following changes in the Commission work plans and Working Groups:

- Commission 1: David Martin will take the position as Chair of the FIG Standards Network during 2009
- Commission 1: Young Surveyors Working Group will be turned to Young Surveyors Network and will be chaired by Cecilia Lindén to the end of 2010.
- Commission 9: Dieter Kertscher from Germany has taken over the chair in Working Group 9.5 – GIS-analyses in Real Estate Market Analyses and Valuation
- Commission 10: New chair is sought for Working Group 10.2 – Commercial Management

That the General Assembly records the discussion with the Commission Chairs at the ACCO podium discussion and gives the follow-up action to the Council and ACCO.

Decision: The motion was adopted.

FRIDAY 8 MAY 2009

Presidents' Meeting, Friday, 8 May, 9:00-11:00, Tarshish A, Dan Eilat Hotel

24. PRESIDENTS' MEETING

Totally 36 people attended this Presidents' Meeting out of which 28 were Presidents or leaders of delegations. At the meeting relations between member associations and FIG were discussed as well as experiences from the FIG Working Week 2009. A separate memorandum of this meeting is circulated to the participants of the meeting and to the Presidents of member associations.

Second Session, Friday, 8 May, 11:30–12:30, Big Blue, Dan Eilat Hotel

25. ROLL CALL

Vice President Matt Higgins took the roll call. The roll call was made only for member associations and affiliate members. To shorten the roll call it was made based on the list of attendees from the first session of the General Assembly. Delegates representing academic members, corporate members and

correspondents as well as honorary presidents and honorary members were entered in the records based on their registrations to John Neel, the new General Manager of FIG at the meeting venue.

Recorded that based on the decision of the General Assembly in 2006 only those member associations that had paid all their membership fees to the end of 2008 are allowed to vote at the meeting. A list of member associations that are not allowed to vote was published on the FIG web site as per 30 April 2009.

30 member associations out of 99 were present at this session.

Noted that the General Assembly has appointed Ms. Cecilia Lindén from ASPECT, Sweden and Mr. Yoav Tal from ALSI, Israel as tellers to this session of the General Assembly.

Appendix to items 2 & 25: Roll Call.

Motion: That present members are recorded in the minutes.

Decision: The motion was adopted.

26. MEMBERSHIP

The Council wants to inform the General Assembly that the list of academic members has been updated based on the information received during the week and on onsite payments. The changes have been included in the minutes.

Motion: That the General Assembly notes the situation with membership issues.

Decision: The motion was adopted.

27. REPORTS ON CO-OPERATION WITH THE FIG CORPORATE MEMBERS, FIG FOUNDATION AND YOUNG SURVEYORS NETWORK

Co-operation with the FIG Corporate Members

A traditional meeting for FIG Corporate Members was held on Wednesday 6 May. At the meeting the continuous support from the corporate members was recorded. A proposal to create a more flexible partnership model for the corporate members has been discussed and is under preparation. This will include more tailor-made and longer term options as well as increased benefits especially to platinum level corporate members.

Motion: That the General Assembly records the report and records its thanks to Peter Normann Hansen, FIG Ambassador for Corporate Members.

Decision: The motion was adopted.

FIG Foundation

President John Hohol, FIG Foundation reported on the Foundation meeting and introduced the first two scholarships that the Foundation had given to attend the Working Week in Eilat. These were given to Mr. Habtemicael Weldegiorgis, Eritrea who also made a short speech at the meeting and to Dr. Jayanta Kumar Ghosh from India.

Motion: That the General Assembly records the report.

Decision: The motion was adopted.

Young Surveyors Network

Chair Cecilia Lindén, Young Surveyors Network, made a presentation on the activities of the Young Surveyors Network.

Appendix to minutes' item 27: Handouts of Cecilia Lindén's presentation on the Young Surveyors Network.

Motion: That the General Assembly records the report.

Decision: The motion was adopted.

28. DECISION ON THE VENUE OF THE FIG WORKING WEEK 2013

According to the statutes the venue of the FIG Working Weeks and Congresses will be decided four years prior the event. For hosting the FIG Working Week 2013 the only bid received was made by the Nigerian Institution of Surveyors (NIS). NIS proposes to organise the FIG Working Week 2013 in Abuja, the capital city of Nigeria. FIG General Assembly has been organised earlier in Ibadan, Nigeria in 1976, when the PC Meeting was for the first time held in Africa.

In the NIS's bid it is stated that NIS shall be hosting the Working Week in co-operation with all FIG accredited member organisations in Nigeria. All the relevant Federal Government of Nigeria Ministries/Para-statal such as Presidency, Foreign Affairs, Transport, Housing, Tourism, Federal Capital Territory, Office of the Surveyor General of the Federation, Surveyors Council of Nigeria, Oil & Gas Multinational Companies, etc. are to partake in sponsoring the Working Week.

The Council has considered the proposal and made the conclusion the NIS is well prepared and able to host the Working Week. It is also one of the most active member associations to attend and contribute to the FIG conferences. The Council further stated that meeting and other facilities in Abuja will satisfy the needs of FIG and its meeting requirements. The Council however stated the NIS's bid requires some clarifications so that it will fit to the concept of FIG Working Weeks, and guarantees right split of responsibilities between FIG and NIS. The Council is working on these open issues, so that a preliminary agreement on the arrangements can be signed in Eilat before the final decision will be made by the General Assembly.

Mr. Alabo C. D. Charles, NIS Vice President for International Affairs will make the presentation on behalf of NIS at the meeting.

Appendix to item 28: Bid from the Nigerian Institution of Surveyors to host FIG Working Week 2013.

Appendix to minutes' item 28: Handouts of Mr. Alabo D. C. Charles's presentation on the Nigerian Institution of Surveyors bid to host FIG Working Week 2013.

Motion: That the General Assembly decides to adopt the bid from the Nigerian Institution of Surveyors to host the Working Week 2013 jointly with FIG in Abuja, Nigeria.

Decision: The motion was adopted.

29. 7th FIG REGIONAL CONFERENCE IN HANOI, VIETNAM, 19-22 OCTOBER 2009

The 7th FIG Regional Conference will be held in Hanoi, Vietnam 19-22 October 2009. It will be organised jointly by the Viet Nam Association of Geodesy, Photogrammetry and Remote Sensing and FIG. Representatives of VGCR will give the General Assembly a report on the arrangements of the Regional Conference. The conference web site: www.fig.net/vietnam.

Presentation on the 7th Regional Conference was given at the General Assembly on behalf of VGCR.

Appendix to minutes' item 29: Handouts of presentation on the 7th FIG Regional Conference in Hanoi, Vietnam, 19-22 October 2009.

Motion: That the General Assembly records the report for information.

Decision: The motion was adopted.

30. REPORT THE CONGRESS 2010 IN SYDNEY, AUSTRALIA, 11-16 APRIL 2010

Mr. Warwick Watkins, Surveyor General of New South Wales gave the General Assembly a report on the preparations of the next FIG Congress to be held in Sydney, Australia, 11-16 April 2010. Conference web site: www.fig2010.com.

Appendix to minutes' item 30: Handouts of Warwick Watkins's presentation on FIG 2010 in Sydney, Australia, 11-16 April 2010.

Motion: That the General Assembly records the report for information.

Decision: The motion was adopted. The President thanked Warwick Watkins for the presentation and welcomed all members to Sydney for the spectacular venue and congress.

31. PRESENTATION OF CERTIFICATES OF APPRECIATION

President Stig Enemark presented at the closing ceremony certificates of appreciation to members of the local organising committee of the XXXII FIG General Assembly and FIG Working Week 2009 and to other persons that had actively participated in the arrangements of the successful Working Week. Special thanks were recorded to the Association of Land Surveyors in Israel, ALSI and its President Joseph Kraus and to Survey of Israel and its Director General Dr. Haim Srebro, Congress Director FIG Working Week 2009.

CLOSING CEREMONY

The President formally closed the 32nd General Assembly of FIG.

At the closing ceremony the FIG banner was handed over by Mr. Joseph Kraus, President of ALSI and Dr. Haim Srebro, Conference Director to Mr. Warwick Watkins and Mr. Craig Sandy from the Organising Committee of FIG Congress 2010. The FIG Congress 2010 will be held in Sydney, Australia 11-16 April 2010.

**32nd General Assembly
Eilat, Israel, 4 and 8 May 2009**

Roll Call

*) No voting right

<u>MEMBER ASSOCIATIONS</u>	4 May	8 May
Algeria Ordre des Géomètres-Experts Fonciers		
Argentina Federación Argentina de Agrimensores FADA		
Armenia Association of Private Surveyors APS		
Australia The Institution of Surveyors, Australia ISA	X	X
Austria Österreichische Gesellschaft für Vermessung und Geoinformation (Austrian Society for Surveying and Geoinformation) OVG	X	X
Belarus Land Reform Association		
Belgium Union Belge des Géomètres-Experts Immobiliers	X	X
Benin Syndicat National des Géomètres-Topographes et Assimilés du Bénin SYNAGETAB		
Botswana Botswana Surveying and Mapping Association		
Brazil Brazilian Society of Cartography, Geodesy, Photogrammetry and Remote Sensing SBC		
Brazil FENEA - Federação Nacional dos Engenheiros Agrimensores		
Brunei Darussalam Brunei Institution of Geomatics, BIC		
Bulgaria Union of Surveyors and Land Managers in Bulgaria		
Bulgaria Chamber of Graduate Surveyors from Bulgaria	X	
Burkina Faso Association des Geometres et Topographes du Burkina AGT-B		
Cameroon Ordre National des Geometres du Cameroun OGEC		
Canada The Canadian Institute of Geomatics CIG	X	X
China P.R. Chinese Society of Geodesy, Photogrammetry and Cartography		
China P. R. China Institute of Real Estate Appraisers and Agents CIREA		
Congo D. R. Federation des Ingenieurs Geometres-Topographes		
Costa Rica Colegio de Ingenieros Topógrafos de Costa Rica CFIA		
Croatia Croatian Geodetic Society HGD	X	
Cyprus Association of Rural Surveying Engineers of Cyprus	X	
Czech Republic Czech Union of Surveyors and Cartographers CSVTS	X	X
Czech Republic Czech Association of Certified Property Appraisers CSCOM		
Denmark Den danske Landinspektørforening DdL	X	X
Egypt Egyptian Committee of Surveying and Mapping ECSM		
Estonia Eesti Geodeetide Ühing EGÜ (Association of Estonian Surveyors)		
Fiji Fiji Institute of Surveyors		
Finland Suomen Maanmittausinsinöörien Liitto MIL (The Finnish Association of Surveyors)	X	X

Finland Maanmittausalan ammattikorkeakoulu- ja opistoteknisten Liitto MAKLI ry		
France Ordre des Géomètres-Experts OGE	X	X
France Association Française de Topographie AFT		
Georgia Society of Professionals of Land Information Technologies SPLIT		X *)
Germany DVW – Deutscher Verein für Vermessungswesen – Gesellschaft für Geodäsie, Geoinformation und Landmanagement	X	X
Ghana Ghana Institution of Surveyors GhIS		
Greece Technical Chamber of Greece TEE	X	X
Greece Hellenic Association of Rural and Surveying Engineers HARSE	X	
Hong Kong SAR, China The Hong Kong Institute of Surveyors HKIS	X	
Hong Kong SAR, China The Hong Kong Institution of Engineering Surveyors HKInstES		
Hungary Magyar Földmérési, Térképészeti és Távérzékelési Társaság MFTTT	X	X
Indonesia Ikatan Surveyor Indonesia ISI		
Iran, Islamic Republic Iranian Society of Surveyors ISS		
Ireland The Society of Chartered Surveyors SCS		
Ireland The Irish Institution of Surveyors IIS		
Israel Association of Licensed Surveyors in Israel ALSI	X	X
Italy Consiglio Nazionale Geometri e Geometri Laureati (CNGGL)	X	X
Jamaica The Land Surveyors Association of Jamaica LSAJ		
Japan Nippon Sokuryosha Renmei (Japan Federation of Surveyors JFS)		
Kenya Institution of Surveyors of Kenya ISK	X	X
Korea, Republic of Korea Confederation of Surveyors	X	
Kosovo Kosova Surveyors Association		
Latvia Latvian Associations of Surveyors LMB		
Lebanon Ordre des Géomètres-Topographes du Liban		
Lithuania Lithuanian Association of Surveyors LMA	X *)	X *)
Lithuania Lithuanian Association of Property Valuers LTVA	X	X
Luxembourg Ordre Luxembourg des Géomètres OLG		
Malaysia Association of Authorised Land Surveyors Malaysia PEJUTA		
Malta Land Surveyor Society		
Mexico Colegio de Ingenieros Topógrafos A.C. CITAC		
Mongolia Mongolian Association of Geodesy and Cartography MAGaC		
Morocco Ordre National des Ingénieurs Géomètres-Topographes ONIGT		
Netherlands Geo-informatie Nederland GIN	X	
New Zealand New Zealand Institute of Surveyors NZIS	X	X
*) Niger Association des Géomètres Experts du Niger AGEN		
Nigeria Nigerian Institution of Surveyors NIS	X	X
Nigeria The Nigerian Institute of Quantity Surveyors NIQS		
Norway Norges Jordskifte kandidatforening NJKF, faglig gruppe af NIF	X	X
Palestinian Authority Licensed Surveyors Association in Palestine		
Papua New Guinea Association of Surveyors of Papua New Guinea	X *)	X *)

ASPGN		
Philippines Geodetic Engineers of the Philippines, Inc.		
Poland Stowarzyszenie Geodetow Polskich SGP		
Portugal Ordem dos Engenheiros, Colégio de Engenharia Geografica ORDENG		
Puerto Rico, USA Colegio de Ingenieros y Agrimensores de Puerto Rico CIAPR		
Romania Union of Romanian Geodesy		
Romania Romanian Association of Private Surveyors APCGCR		
Russian Federation Federal Service of Geodesy and Cartography of Russia		
Republic of Serbia Union of Surveying Engineers of Serbia		
Slovak Republic Slovak Union of Surveyors and Cartographers		
Slovak Republic Chamber of Surveyors and Cartographers KGK	X	X
Slovenia Association of Surveyors of Slovenia ZGS		
South Africa South African Council for Professional and Technical Surveyors PLATO	X	X
Spain Ilustre Colegio Oficial de Ingenieros Técnicos de Topografía		
Sri Lanka Surveyors' Institute of Sri Lanka		
Sweden Association for Chartered Surveying, Property Evaluation and Transactions - ASPECT	X	X
Switzerland geosuisse - Swiss society of geomatics and landmanagement	X	X
Syria Order of Syrian Engineers and Architects		
Tanzania Institution of Surveyors of Tanzania IST		
Trinidad and Tobago Institute of Surveyors of Trinidad and Tobago		
Tunisia Association Nationale des Ingenieurs Géomètres-Experts Tunisiens ANIGET		
Turkey TMMOB Chamber of Surveying Engineers of Turkey	X	X
Ukraine Ukrainian Society of Geodesy and Cartography		
United Kingdom The Royal Institution of Chartered Surveyors RICS	X	X
United Kingdom Institution of Civil Engineering Surveyors	X	X
United States of America. American Congress on Surveying and Mapping ACSM	X	X
United States of America The Appraisal Institute AI	X	X
Uruguay Asociacion de Agrimensores del Uruguay		
Vietnam Association of Geodesy, Cartography and Remote Sensing VGCR	X	
Zimbabwe Survey Institute of Zimbabwe SIZ		
*) membership to be decided by the General Assembly 4 May 2009	37/99	30/99

<u>AFFILIATES</u>		
Australia and New Zealand (ANZLIC)	X	X
Belgium (General Administration of the Patrimonial Documentation)	X	X
Brunei Darussalam (Survey Department)		
Cambodia (Ministry of Land Management, Urban Planning and Construction)		
Chile (Servicio Hidrográfico y Oceanográfico de la Armada de Chile)		
Colombia (Instituto Geográfico Agustín Codazzi, IGAC)		
Denmark (National Survey and Cadastre, Denmark)		
Finland (National Land Survey of Finland)	X	X
Hungary (Institute of Geodesy, Cartography and Remote Sensing, FÖMI)	X	X
Iceland (The Land Registry of Iceland)		
Republic of Iraq (General Directorate for Surveying, Ministry of Water Resources)		
Jordan (Department of Lands & Survey)		
Lao People's Democratic Republic (National Geographic Department)		
Macedonia (FYROM) (State Authority for Geodetic Works)		
Mexico (National Institute of Statistics, Geography and Informatics, INEGI)		
Mongolia (Administration of Land Affairs, Geodesy & Cartography)		
Namibia (Office of the Surveyor General)		
Nepal (Survey Department, Government of Nepal)		
Netherlands (Cadastre, Land Registry and Mapping Agency)	X	X
Norway (Norwegian Mapping and Cadastre Authority)		
Romania (National Agency for Cadastre and Land Administration)		
Rwanda (Ministry of Lands, Resettlement and Environment)		
Russian Federation (Siberian State Academy of Geodesy)		X
Saudi Arabia, Kingdom of (Ministry of Municipal and Rural Affairs)		
Sweden (Lantmäteriet)	X	X
Tajikistan (Agency for Land Management, Geodesy and Cartography)		
United Arab Emirates (Surveying Department, Dubai)		
USA (NOAA, National Geodetic Survey)	X	X
	7/28	8/28
<u>CORRESPONDENTS</u>		
Bahrain		
Benin, Republic of		
Bhutan		
Gabon		
Guyana		
India		
Lesotho		
Madagascar		
Saint Lucia, WI		
Senegal		
Tanzania (Zanzibar)		

Thailand		
Tonga		
Tunisia		
Tuvalu		
	0/15	0/15
<u>ACADEMIC MEMBERS</u>		
Australia The University of Melbourne		
Australia RMIT University		
Australia University of New South Wales		
Australia University of Southern Queensland		
Australia University of Technology Sydney		
Austria BOKU, Vienna		
Bahrain Arabian Gulf University		
Belgium University of Applied Sciences Kaho Sint-Lieven		
Belgium ECAM - Haute Ecole Leonard de Vinci, Département Construction		
Belgium University of Liege, Unit of Geomatics		
Botswana University of Botswana		
Brazil UNISINOS		
Canada University of Calgary	X	X
Canada University of New Brunswick		
Canada Université Laval	X	X
Chile Universidad de Concepcion		
China Renmin University of China, School of Public Administration		
Colombia Universidad Distrital, Facultad de Ingenieria		
Colombia Universidad Distrital, Facultad del Medio Ambiente y Recursos Naturales		
Croatia University of Zagreb		
Denmark Aalborg University	X	X
Egypt National Water Research Center		
Egypt National Research Institute of Astronomy & Geophysics		
Ethiopia Institute of Land Administration, Bahir Dar University		
Finland Helsinki University of Technology	X	X
Finland EVTEK		
France Ecole Supérieure des Géomètres et Topographes		
Germany Technische Universität München		
Germany Anhalt University of Applied Sciences		
Germany University of Applied Sciences Oldenburg/Ostfriesland/Wilhemshaven		
Germany Technische Universität Berlin		
Ghana University of Mines and Technology (UMaT)		
Greece National Technical University of Athens NTUA	X	X
Greece Technological Educational Institute of Athens		
**) Guatemala Universidad de San Carlos de Guatemala		
Hong Kong SAR, China The Hong Kong Polytechnic University		

Hungary University of West Hungary	X	X
Ireland Dublin Institute of Technology		
Israel Technion – Israel Institute of Technology	X	X
Jamaica University of Technology Jamaica		
Kenya University of Nairobi		
Latvia Riga Technical University		
Lithuania Vilnius Gediminas Technical University		
Lithuania Lithuanian University of Agriculture		
Malaysia Universiti Teknologi Malaysia, Department of Geomatics Engineering		
Mexico Universidad Autónoma de Nuevo León		
Nepal Land Management Training Centre		
Netherlands ITC International Institute for Geo-Information Science and Earth Observation	X	X
New Zealand University of Otago	X	X
Nigeria University of Lagos	X	X
Nigeria Nnandi Azikiwe University	X	X
Norway Agricultural University of Norway, Dept. of Land Use and Landscape Planning		
Norway Norwegian University of Life Sciences, Department of Mathematical Sciences and Technology		
Oceania University of the South Pacific		
Palestinian Authority Palestine Polytechnic University		
Poland Agricultural University of Krakow		
Puerto Rico, USA Universidad de Puerto Rico		
Puerto Rico, USA Polytechnic University of Puerto Rico		
Romania “Dunarea de Jos” University Galati		
Romania 1 Decembrie 1918 University of Alba Iulia		
Russian Federation Moscow State University of Geodesy and Cartography, Economic and Land Management		
Russian Federation State University of Land Use Planning		
Serbia University of Novi Sad, Faculty of Technical Sciences		
Singapore National University of Singapore		
Slovenia University of Ljubljana		
South Africa University of Cape Town		
Spain Universidad Politécnica de Madrid		
Spain Universidade de Santiago de Compostela		
Spain Institut de Geomàtica, Castelldefels		
Sweden Lund University LTH		
Sweden Royal Institute of Technology		
Switzerland University of Applied Sciences Northwestern Switzerland		
Tanzania Ardhi University		
Turkey Istanbul Technical University	X	X
United Kingdom Kingston University		
United Kingdom Oxford Brookes University		

United Kingdom Newcastle University		
United Kingdom The University of Nottingham	X	X
United Kingdom Sheffield Hallam University		
United Kingdom University College London		
United Kingdom University of the West of England		
**) USA Ferris State University		
USA New Mexico State University	X	X
USA Pennsylvania State University		
USA Texas A&M University – Corpus Christi		
West Indies University of the West Indies	X	X
**) expelled for unpaid membership fees in February 2009 and recorded by the General Assembly 4 May 2009	15/83	15/83
<u>CORPORATE MEMBERS</u>		
Platinum level		
Bentley Systems	X	X
Environmental Systems Research Institute, Inc. (ESRI)	X	X
Intergraph Mapping and Geospatial Solutions		
Leica Geosystems AG		
TOPCON Co		
Trimble Navigation Ltd.		
Gold level		
SOKKIA TOPCON Co Ltd		
Silver level		
Blom ASA		X
COWI A/S		
Grontmij nv		
Magellan Navigation		
Bronze level		
AED-SICAD Aktiengesellschaft		
Eimar Arabia Real Estate Development Co. Ltd.		
GIM International – Reed Business Information – Geo		
IGN France International		
Mason Land Surveys Limited		
Schonstedt Instrument Company		
SEDIC - Sudan Engineering and Digital Information Center		
Basic level		
Derinsu Underwater Engineering Ltd.		
Geo:connexion Ltd		
GEOEXPERT		
GeoInformatics		
GIS Development Pvt. Ltd.		
Hansa Luftbild Sensorik und Photogrammetrie GmbH		
Institut Cartogràfic de Catalunya		
International Land Systems (ILS), Inc.		
LKN Earth Research & Consulting		
P. V. Publications Ltd		

Regional level		
Associated Surveyors (Pvt.) Ltd		
Cameroon Engineering		
Al-Mutakamilah Real Estate (Cityplex)		
Galileo Instruments, Inc.		
Deutsche Gesellschaft für Technische Zusammenarbeit (GTZ) GmbH		
ORBITS Engineering Firm		
REIDIN.com		
SEPRET (Société des Etudes de Projets et Réalisation des Travaux)		
	2/36	2/36
HONORARY PRESIDENTS		
Robert W. Foster	X	X
HONORARY MEMBERS		
Jürg Kaufmann	X	X
Stig Enemark	X	X
COMMISSION CHAIRS 2006-2010		
Commission 1 – Yaacoub Saade – Leonie Newnham	X	X
Commission 2 – Bela Markus	X	X
Commission 3 – Chryssy Potsiou (4/5) – Yerach Doytsher (8/5)	X	X
Commission 4 – Andrew Leyzack	X	X
Commission 5 – Rudolf Staiger	X	X
Commission 6 – Alojz Kopacik	X	X
Commission 7 – András Osskó – Daniel Roberge	X	X
Commission 8 – Diane Dumashie	X	X
Commission 9 – Kauko Viitanen	X	X
Commission 10 – Andrew Morley	X	X
PERMANENT INSTITUTIONS		
International Office of Cadastre and Land Records (OICRF)	X	X
International Institution for the History of Surveying and Measurement, Permanent Institution of FIG		
FIG FOUNDATION – President John Hohol	X	X
FIG COUNCIL		
President Stig Enemark	X	X
Vice President Dalal S. Alnaggar		
Vice President Iain Greenway	X	X
Vice President Matt Higgins	X	X
Vice President Teo CheeHai		

The Role of FIG

In contribution to professional development
and the global agenda

Prof. Stig Enemark

 President

PRESIDENT'S REPORT, GENERAL ASSEMBLY
FIG WORKING WEEK, EILAT, ISRAEL 4 MAY 2009

Highlights 2008-2009

- **FIG Working Week, Stockholm**
 - Highly successful conference
 - Strengthening co-operations with UN-Habitat
 - Publication contributing to the global agenda
- **Joint FIG/World Bank Conference,**
 - Highly successful and high level conference
 - 200 invited experts from throughout the world
 - High recognition of FIG in Land Governance
 - Publication contributing to the global agenda



FIG President schedule June 2008 – May 2009

13-20 June FIG Working Week, Stockholm, Sweden

4-8 July, ISPRS Congress, Beijing, China

8-11 July, Hanoi, Vietnam, preparations for the FIG Regional Conference, Oct. 2009

28-31 July, Sydney, Australia, preparations for the FIG Congress, April 2010

9-15 September, FIG/FAO workshop and Com 7 Annual Meeting, Verona, Italy

17-19 September, CLGE Congress, Strasburg, France

15-17 October, SCS Annual conference, Dublin, Ireland

3-7 November, UN-Habitat WUF, Nanjing, China

10-14 Sydney, Australia, preparations for FIG Congress, April 2010

24-25 November, FAO EGM meeting, Rome, Italy

16-21 December, Rabat/ Marrakech, Morocco, preparation for FIG WW 2011

30 January-1 February, DdL Annual meeting, Nyborg, Denmark

10-13 February, Map World Forum, Hyderabad, India

13-14 February, Survey of India, Delhi, India

18-18 February, Department of Surveying and Mapping, Kathmandu, Nepal.

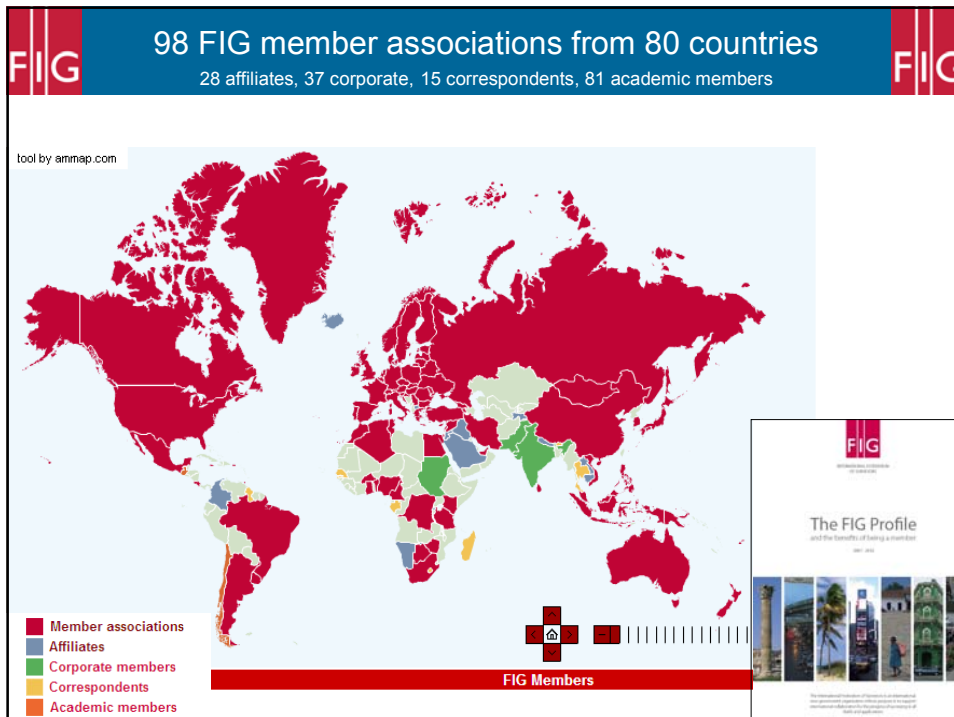
26-28 February, FIG Commission 2 workshop, Vienna, Austria

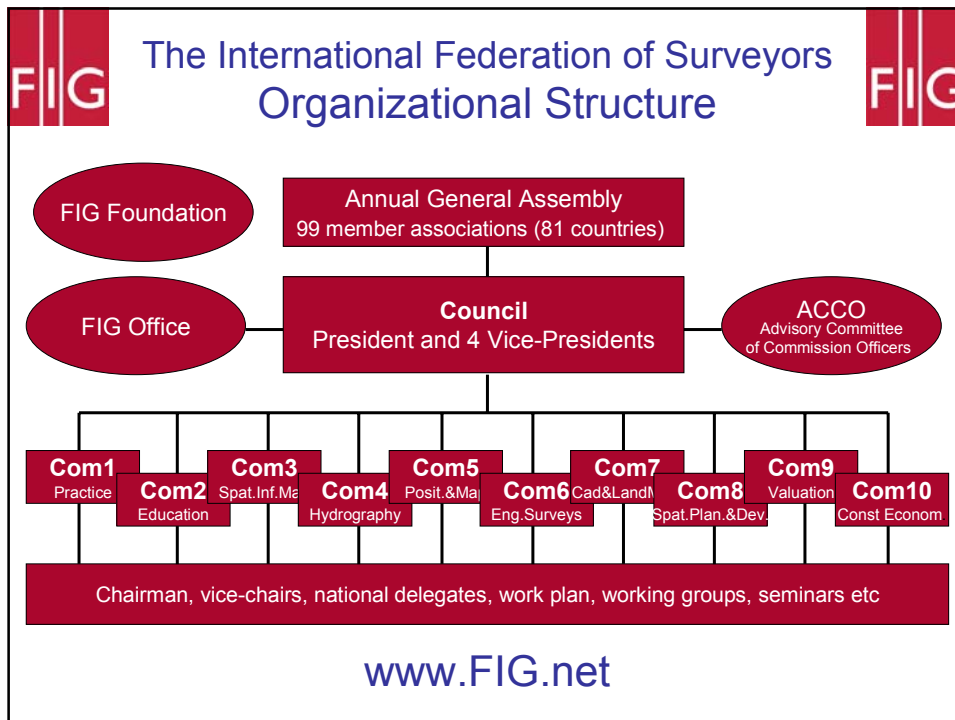
9-11 March, Joint FIG/WB conference, Washington, USA

30 March- 3 April, UN-Habitat Governing Council meeting, Nairobi, Kenya

18-22 April GeoSiberia, Novosibirsk, Russia

2- 8 May, FIG Working Week, Eilat, Israel





The Role of **FIG**

- **Professional Development**
 - Global forum for professional discussions and interactions through conferences, symposia, commission working groups,
- **Institutional Development**
 - Capacity building through Institutional support for educational and professional and institutional development at national level
- **Global Development**
 - Cooperation with the UN agencies, FAO, UN.Habitat and World Bank, and sister organisations through Joint Board of Geospatial Information Societies.
- **Information and Communication**
 - website, annual review, publications
- **FIG Office**
 - administration, finances,

Professional Development

Annual working weeks

Hong Kong 2007
Stockholm 2008
Eilat 2009

Biennial regional Conferences

Costa Rica 2007
Hanoi 2009

FIG Congress every four years

Sydney 2010

Commission work plans

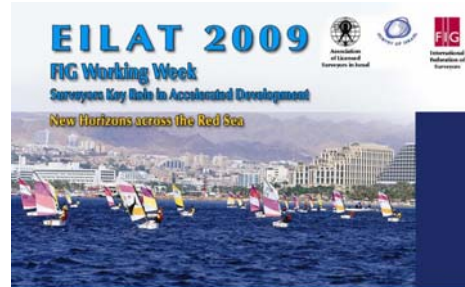
10 technical commissions
Interaction with national delegates

Commission working groups

Interaction with national delegates

Commission workshops and seminars

Especially Com 2, 3, 6, 7 and 9 has been very active in this regard



Dan Eilat Hotel, Eilat, Israel
3-8 May, 2009

New & reduced accommodation rates
for Dan Eilat hotel are available now!



Institutional Development

Member support

FIG provide institutional support to help members to help building educational programs and their institutional basis
And to help national agencies to build systems in surveying, mapping and land management

Latin America (regional institution)
Africa, (Francophone countries); Task Force.
Arab countries (Arab union of surveyors)
Asia (Nepal, India, Central Asia)

Task Forces

Guidelines on Institutional and Organisational Development

Previously: Mutual recognition; Code of Ethics
New: Spatial Enabled Society; Africa Task Force

Networks

Standards
Young Surveyors



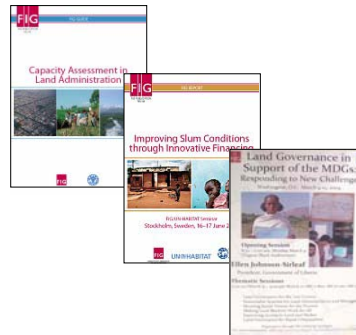
Global Development

FAO, projects on capacity building, good governance, land economics,

UN-HABITAT, partner in the GLTN network, projects on informal settlement, informal development, gendered land tools, etc....

World Bank, joint activities; publications, and joint conference March 2009 on Land Governance in support of the MDGs

Global partnership is the link that drives development for achieving the global agenda such as the MDGs



Global recognition → national recognition → local recognition

Global development Partnership with UN-Habitat

Informal settlements

Traditional cadastral systems do not provide for security of tenure in informal settlements.

A more flexible system is needed for identifying the various kind of social tenure existing in informal settlements.

Such systems must be based on a global standard and must be manageable by the local community itself:

FIG cooperates with UN-Habitat, ITC and the World Bank to develop the **STDM** model that is design as a basic tool for poverty alleviation.



Information and communication

Web site

The key means of communication in a global organisation. An actual, factual, interesting, informative, updated, complete, accessible, source of information and knowledge.

Commission newsletters

Targeted information from the work of the individual commissions and their working

President's letter

Biannual communication president to president

Annual review

Annual overview of the FIG activities in an easy accessible presentation

Publications

FIG publication series with four groups of policy statements, guides, reports, and FIG regulations.

FIG profile

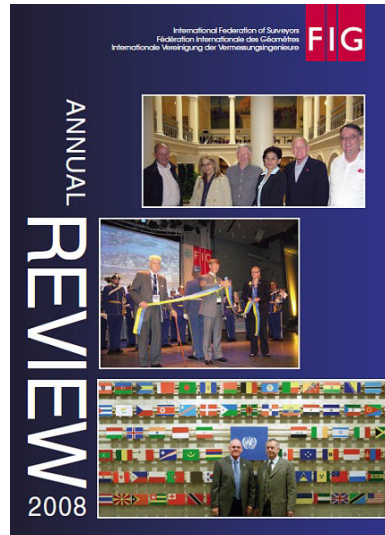


FIG publications



Management and administration

FIG

Is a global NGO based on voluntary work from the council and the commission officers as well as national members, delegates and others..

The Council

Leadership and executive management; promotion of profession; member support; event development; global development.

The Commissions

Professional development and innovation in all areas of surveying in cooperation with national delegates..

FIG Office

General administration; financial management, member services; council and commission support and services; general communication; event management.

The high level of activity and development can only be sustained by highly professional administrative support.



EILAT 2009

FIG Working Week

Surveyors Key Role in Accelerated Development

New Horizons across the Red Sea



Thank you very much

EILAT PRESENTATION

INSTITUTION OF SURVEYORS OF KENYA:
WAFULA NABUTOLA, M.Sc

Wafula Luasi NABUTOLA, IV

Core competencies:

- Chartered Member of Institution of Surveyors of Kenya
- Executive Manager Investments - Insurance
- Tourism Facilities manager – Protected Areas
- Facilities manager - Banking
- Assistant manager Projects - Reinsurance
- Mentoring of budding surveyors - ISK
- Chairman, Director NCBDA – Urban socio-economics
- Practitioner of Private Public Partnership – CePPPs
- Kenya Private Sector Alliance – Governor
- Rainwater Harvesting – Committee
- Kenya National Building Code Commissioner
- Micro traders – Inclusiveness – Urban space for all
- 25 hour city economy committee – National Economic and Social Council

FIG and Me

- Been involved with FIG for about six years now.
- During this time of collaborating I have learnt from the best, all of you here, and I have grown.
- I have conducted research, published papers and made presentations at conferences such as this one.
- Last year I was in Valencia to work with Commission 3. However..
- My Base commission is Commission 8

Commission 8

- Active Commission 8 member for x 6 years presenting at numerous working weeks and regional conferences
- Active working group member on Informal Settlements
- Core group member contributing to FIG publication # 42
- Assigned Commission 8 administration duties including chairing and rapporteur of technical sessions at Working Weeks and Regional Conferences
- Involved in Commission 8 annual activities, including UN Habitat GLTN workshop 2008
- Chaired the first civil society national conference on Kenya's National Land Policy

Spatial Planning and other issues relating to Commission 8

- Development
- Good Governance
- Integrity of the profession
- MDG
- Time has come for me to give back to FIG

I have a Programme

- European Spatial Planning
 - Is up and running, since 1950's it has its challenges
 - It also offers opportunities to emulate
 - There are lessons to be learnt
- Asian – There are excellent models from Japan, India, Singapore
- Middle East – Practical models from Israel, Egypt and other nations in M.E.
- Africa Spatial planning has case studies
- Collaboration with other Commissions

DR. DIANE DUMASHIE

- Dr. Dumashie leads Commission 8 with candour, goodwill, purpose and a sense of mission and direction.
- She has demonstrated and applied tremendous energy and engaged in excellent teamwork
- She has put Commission 8 up there amongst the best, collaborating across the Board
- I aim to follow into her footsteps, harness the goodwill and build on the foundation she laid.
- Tap into her model synergies and guidance

Chicken analogy

- In the village I grew up when guests come, we kill chicken, as children we would be given Chicken legs, Intestines; wings, not allowed at table but sat nearby
- When we grew up and got circumcised, became adults, we were allowed access to other choice parts of chicken and to sit at table with our parents and the guests, get involved in the discussions and decision making
- I believe that Kenya, indeed Africa has earned her place at the FIG Table





Dr Richard Sliuzas
nomination Chair FIG Commission 8
Eilat 2009



Who is dr Richard Sliuzas



- Australian/Dutch
- Born 1956
- PhD in 2004 on Managing Informal Settlements
- Ass Prof ITC Enschede NL
- Specialist in use of geo information and technology for urban planning and unplanned settlements



Geo-information for urban planning



Geo information for slum upgrading



Knows how to cooperate.



Good international network



Works at the edge of theory and practice



Reasons why?

- Dr Sliuzas will enhance the relevance of FIG in the field of urbanisation, informal settlements and slum upgrading (HABITAT).
- Dr Sliuzas has the support of the Dutch Association and of his employer ITC.
- Dr Sliuzas has a good workplan.
- Dr Sliuzas fits in the FIG family.



Task Force on Institutional and Organisational Development

An update on progress and plans

Iain Greenway, Chair

I. Work to date

The story so far

- Task Force formed late 2006
- Designed to build on previous work.
- FIG is well-placed to lead, as it brings together leading professionals from around the world.
- The work must assess needs and decide how to respond to those needs most effectively.
- Such work will further FIG's Mission.

Membership

- Iain Greenway (UK) – Chair
- Santiago Borrero Mutis (Colombia)
- Adam Greenland (New Zealand)
- Teo Chee Hai (Malaysia)
- John Parker (Australia)
- Richard Wonnacott (South Africa)
- Spike Boydell (Australia)

Key questions

- Where are the key barriers to effectively functioning institutions and organisations?
- Who are the key influencers who can help to remove the barriers?
- What key materials are needed to remove the barriers?
- Which types of organisation are most affected?

Developing a model to assess capacity

- Input from ITC
- Tested at Cambridge Conference, July 2007
- Three levels
- Five components – further enhanced to six

Levels of capacity

- The broader system/societal level
- The entity/organisational level
- The group-of-people/individual level

The components

- Development of appropriate policy/legislation
- Conversion into systems/ programmes
- Splitting activity between stakeholders
- Production of the necessary outputs
- Effective use of the outputs
- Effective learning and development

Survey

- Four different statements to rank
 - For each level
 - For each component
- Results
 - Societal level is the weakest
 - Cooperation is instead suspicion
 - Working across sectors is a key weakness
 - There are skills gaps
 - Stakeholder understanding falls short
 - Insufficient time given to learning

Draft checklist of key issues (1)

- There are clear statements of what each level/ sector is responsible for
- Relevant training courses clearly explain the need for cooperative working, and the roles of each level/sector
- There is clear leadership 'from the top' to encourage joining up
- A clear role/ input is given to the private sector (including professional bodies)
- There is a clear focus in place to develop a cooperative culture at individual level

Draft checklist of key issues (2)

- The network of individuals and organisations has a sufficient voice with key decision makers that land admin issues are fully taken into account in all central policy making
- Strategy making is a process open to all stakeholders, with all relevant voices heard
- The legal framework enables modern techniques and cross-sector working
- There are structured methods for learning from our own and others' experiences

II. Remaining work

Outputs

- Finalise the key statements
- Develop an FIG Policy Paper
 - Policy
 - Research
 - Key statements
 - Self-assessment tool
 - CEO checklist
- Work with other organisations to make material easily and widely available

A timetable

- Final draft publication by October 2009
- Sydney
 - Plenary presentation?
 - Two sessions of ‘invited papers’?
- Post-Sydney
 - Ensure national material easily available (Knowledge Portal etc)
 - Do some pilot implementation work?

FIG WW 2009

Eilat

General Assembly



**From Working Group to Young Surveyors
Network**

**Cecilia Lindén
Thorsten Schwing**

From Working Group to Network

History of our group 1/2

- **WW Cairo 2005: First "un-official Student meeting"** with 13 participants from 6 countries - organized by the former working group 1.5 "Under Represented Groups in Surveying" (2002 - 2006)
- **Congress Munich 2006: First "official Student meeting"** with up to 100 participants from 20 countries – organized by the German Student Organisations ARGEOS and KonVerS
- The working group of "Young Surveyors" was **founded in 2006** after the FIG Congress in Munich.



From Working Group to Network

History of our group 2/2

- **WW 2007 Hong Kong: “The first official meeting”**.
Presentation of our Policy issues
- **Cairo workshop October 2007:** Development of the *work plan* for the next 3 years. Invited by FIG Vice President Dr. Dalal S. Alnaggar and thanks to the FIG Foundation
- **WW 2008 Stockholm:**
with the theme
“integrating generations”
Working group got kick started
with 100 registered Students

Speed mentoring



04/05/2009

C. Linden and T. Schwing

3



From Working Group to Network

Why such a network

- How many of you have meet a young surveyor at a FIG event?
- FIG is largely unknown among young surveyors
- FIG is particularly Eurocentric
- How do young surveyors get involved within their national networks?
- How do we market a profession with the average age over 50?
- *The youth knows how to make FIG sexy*
- **Continuum of knowledge – we are not here to take over**

04/05/2009

C. Linden and T. Schwing

4



From Working Group to Network

FIG Young Surveyors Network

- Establishing relationships with other young surveyors organisations
- Having young surveyors on key positions within FIG
- Information flow via website and newsletters
- FIG 2010 using online forums and podcasts
- Young surveyors beyond horizons



In Eilat

- **Speed Mentoring** (time and place will be announced on the message board)
- **TS 3H - Young Surveyors Discussion Wednesday, 11:00-12:30, HR 2**
- **TS 4G – Young Surveyors Session Wednesday, 14:00-15:30, HR 2**
- <http://www.stusta.mhn.de/~u003739a/>

04/05/2009

C. Linden and T. Schwing

5

From Working Group to Network

This is what we are doing...

We suggest that you start by getting your young surveyors involved on national level and send at least one to the FIG Congress in Sydney 2010...

We would like to thank our national organisations who has made this work possible



04/05/2009

C. Linden and T. Schwing

6



International Federation of Surveyors
Fédération Internationale des Géomètres
International Vereinigung der Vermessungsingenieure

Finance Report

Iain Greenway, Vice President

**FIG General Assembly
4 May 2009, Eilat, Israel**

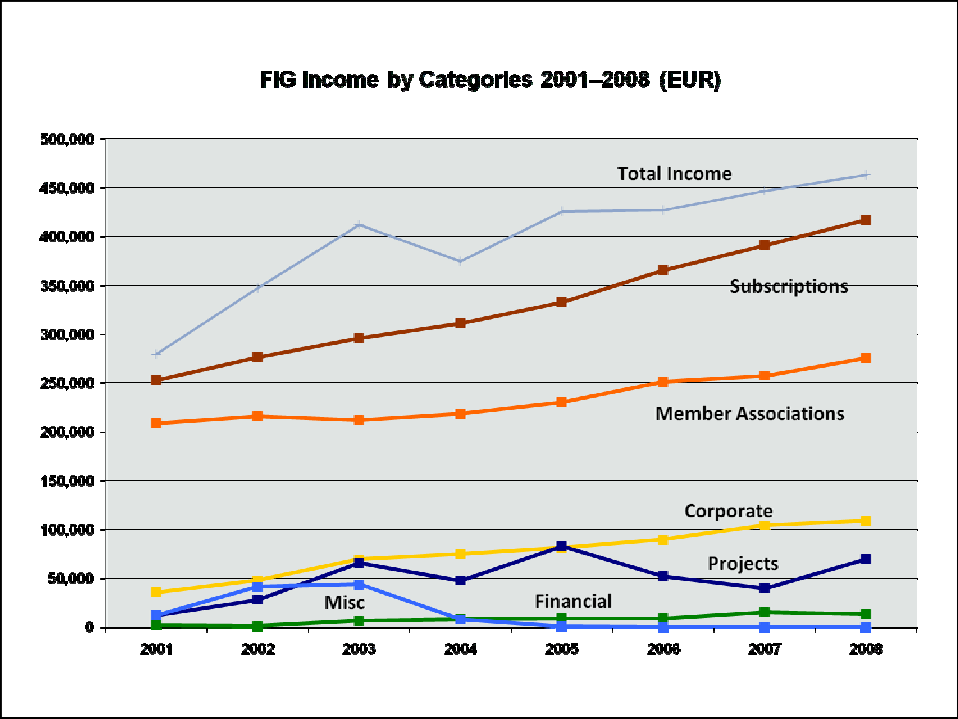
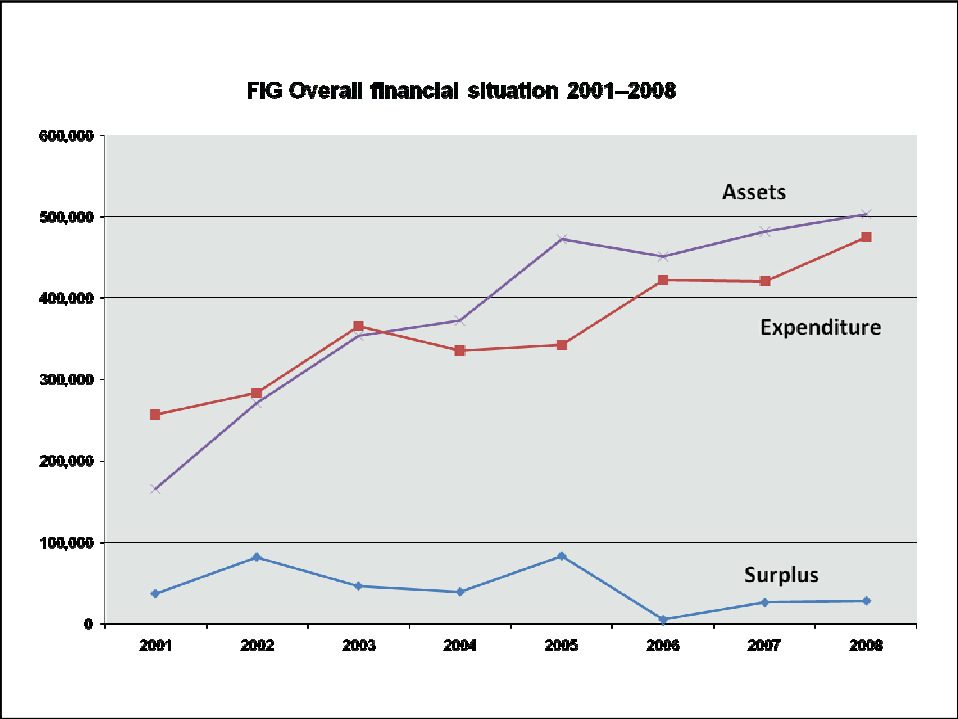
Last year's discussions

- A number of issues raised at 2008 GA
 - Subscription levels for large and small member associations
 - Transparency of financial reporting
- Careful consideration by Council at February 2009 meeting
- Correspondence with those raising the points
- Reflected in this presentation

This presentation

- Overall financial situation at 2008
 - Adopt audited 2008 accounts (20A)
- Note changes to reporting template (20B)
- Reserves
 - Agree general and specific reserves concept
 - Approve the range for the general reserve
- Approve member association subscriptions for 2010 and 2011 (21)
- Endorse budgets for 2009-11 (20C)

Overall situation and trends



Financial issues

- Success in building reserves
- Lack of clarity regarding purpose and necessary size of reserves
- Reporting categories not clear to 2008 GA
- Concerns raised regarding subscription levels, particularly for large and small associations
- Little clarity in reporting as to the effects of regular/ one-off income and expenditure

2008 Accounts

2008 accounts

- Annex A to Appendix to item 20
- Auditors' opinion – true and fair view
- Surplus for the year of €28,029
- Assets at year end of €503,453
- Subscription arrears at year end of €85,000
- **Motion: that the GA adopts the audited accounts for 2008**

Reporting template

Reporting template

- Annex B to Appendix to item 20 [Annex B - FIG accounts 2008 general assembly.xls](#)
 - Regular income (subscriptions, interest)
 - Regular expenditure
 - Administration
 - Marketing and publications
 - Council and Executive Management
 - Commission support
 - Events
 - Projects
- **Motion: that the GA approves this template**

Reserves

General Reserve

- To cope with the following:
 - Three bad years in succession; and
 - One crisis; and then
 - Rounded up
 - Proposed range of 90-100% of regular annual expenditure, to be reviewed every 2 years
- Invested in low risk investments

Specific reserves

- For the development of FIG, the Office infrastructure, or support for specific groups of surveyors, including:
 - Commissions
 - Office development
 - Poor member associations
 - Task Forces
 - Young Surveyors

Motion

- That the GA approves the concept of general and specific reserves
- That the GA approves that Council will manage the General Reserve in the range 90-100% of regular annual expenditure
- That the allowable range of the General Reserve is reviewed every 2 years

Subscriptions – item 21

Subscriptions

- Maximum level from 2010 – 5,500 members
- Minimum level from 2010 – the greater of 20 members and €50
- 2010 ‘freeze’
- 2011 inflation rise

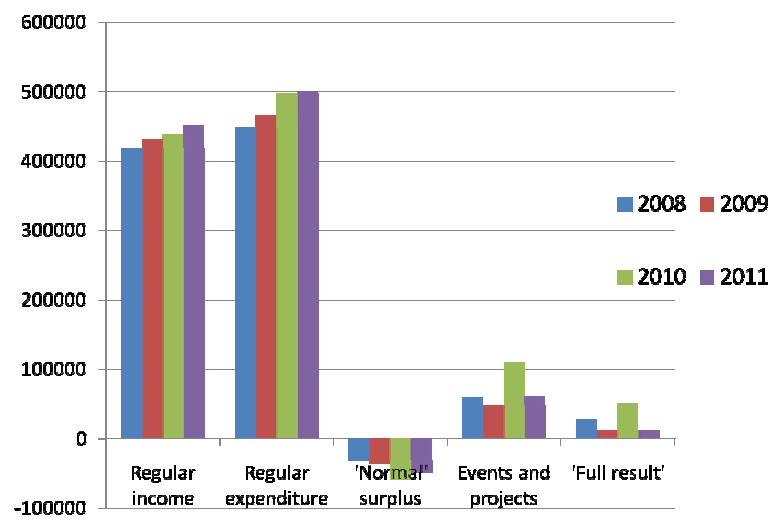
Proposed subscriptions

Year	Per capita fee	Minimum fee	Maximum fee
2010	4.18 € per member up to a maximum of 5,500 members. Member associations from countries listed by the World Bank as low-income economies or lower-middle-income economies shall pay 2.09 € per member up to a maximum of 5,500 members.	20 members or 50 € (whichever is greater)	5,500 members (22,290 €)
2011	4.30 € per member up to a maximum of 5,500 members Member associations from countries listed by the World Bank as low-income economies or lower-middle-income economies shall pay 2.15 € member up to a maximum of 5,500 members.	20 members or 50 € (whichever is greater)	5,500 members (23,560 €)

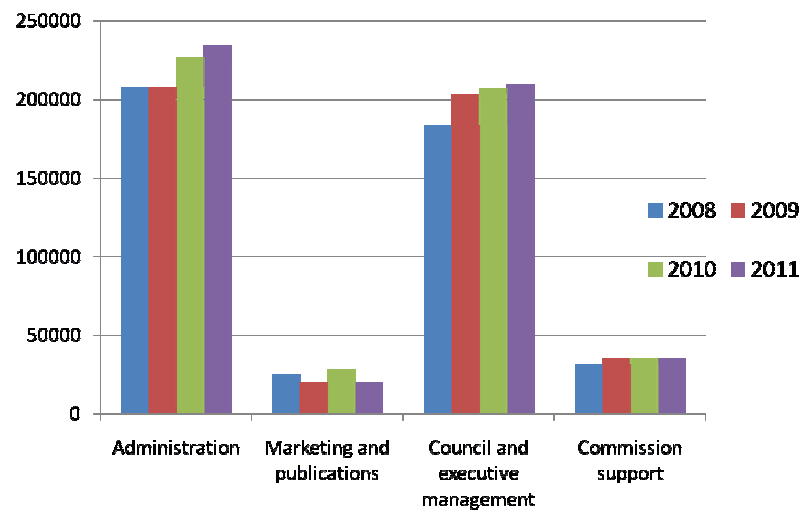
**Motion: that the GA approves the
member association subscription
rates for 2010 and 2011**

FIG budget 2009-11

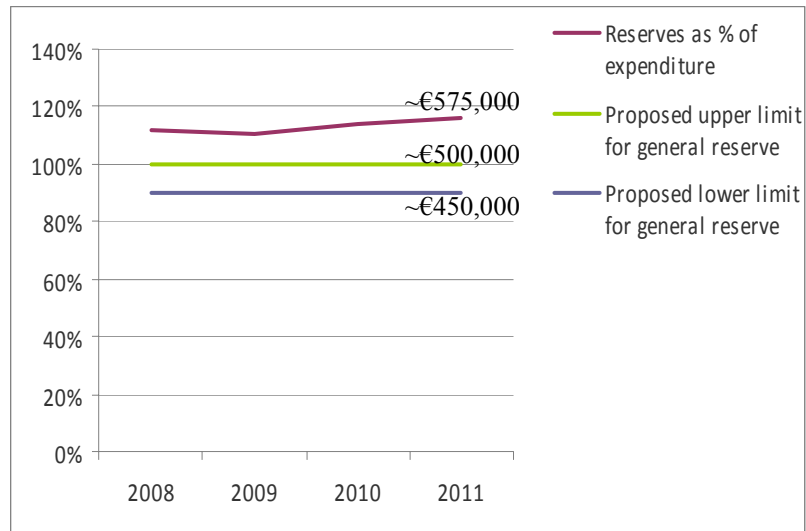
Budget overview



Expenditure budget



Total reserve levels



Motion: that the GA endorses the FIG budget for 2009, 2010 and 2011

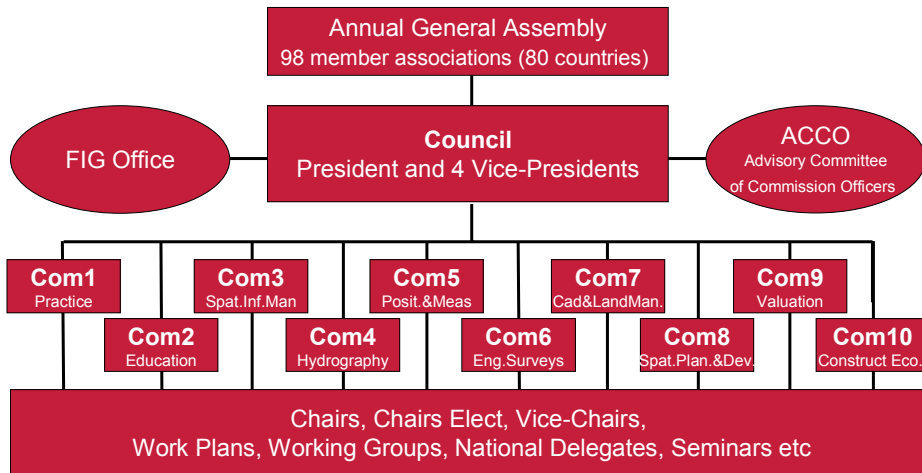
[Annex C - accounts 2008 and budgets 2009-11 general assembly.xls](#)

General Assembly Discussion on the Work of the Commissions

Discussion Outline

- **Introduction about process for current and future Commission Work Plans;**
- **For each Commission:**
 - **Current Hot Topics and Recent Achievements;**
 - **Issues on the Radar for 2011 to 2014;**
- **Feedback and Discussion with Member Associations;**
- **Next Steps for ongoing engagement with Member Associations.**

Organisational Structure



Upcoming FIG Events



Commission Work Plans

- **Work Plans of the Current Commission Chairs:**
 - For the Period 2007 to 2010;
 - Coming to their culmination at the Congress in Sydney, April 2010;
 - Drafting Technical Programme for Sydney at the Regional Conference in Vietnam in October 2009;
- **Work Plans of the New Commission Chairs:**
 - For the Period 2011 to 2014;
 - Starting to be developed from now;
 - Work Plan Drafting at the Regional Conference in Vietnam;
 - Drafts for Presentation and Discussion in Sydney;
 - Possible moderation during 2010 to mesh with the Work Plan of the New Council (not elected until Sydney);
 - Ratified at General Assembly during 2011 Working Week in Marrakech, Morocco;
- **Feedback and Involvement from Member Associations?**

Com 1 – Professional Practice

- **Standards Network (From Iain Greenway)**
 - Turning the Land Administration Domain Model (LADM) into an ISO Standard. –Well Underway (C 7)
 - Staying involved with ISO work on survey instruments.
 - active member (C5)
 - Deciding how to be involved with Valuation Standards (IVSC) – decision to be progressed by C9
- **Young Surveyor's Network**
 - Continue program of activities to develop working relationships between young surveyor's and FIG operations

- **Commission 1 in General**

- Changing role of surveyor's to meet the changing demands of society in the face of challenges such as climate change. This includes understanding the different demands and specific challenges of developing and developed countries.
- Navigating new work arrangements such as multi team approaches when dealing with disaster recovery and working with new infrastructure building approaches such as public/private partnerships.
- Innovative solutions and approaches to common practice issues.
- Building strong professional associations. Guidelines for establishing and strengthening associations building on the experiences of FIG member associations.

FIG publication: e-Learning (Editor: Liza Groenendijk,)

- 1. The concept of e-learning** - What is e-learning – definitions, Pedagogy – models, Knowledge management, Alignment of policy, strategy and operations
- 2. The Nature of e-learning** - Development of a knowledge base, e-Learning 2.0, Reusability, Metadata, Standards
- 3. E-learning technology and infrastructure** - Technology, Virtual library, Learning infrastructure, End-to-end model for e-learning
- 4. Effective e-learning** - Networking, organizational issues, Business models, Benefits
- 5. Role of e-learning in surveying** - Awareness building, Platform for collaboration, Sharing good practices, Creating a 'learning community', The growing importance of life-long-learning
- 6. FIG Policy on e-learning**
- 7. Conclusions**
- 8. APPENDIX – e-learning in Practice**

Issues for future expansion?

- Educational marketing and student recruitment
 - Excellent start in Vienna
- Education program accreditation
 - Guidelines and policies
- Surveying Body of Knowledge
 - What is the core/special knowledge that defines surveying as a profession

- Emphasize the need for coordination and regularization in spatial data collection and information sharing
- What needs to be done (necessary land tools) to facilitate the development of NSDIs
- Increase cooperation (public & private sectors and academics)
- SIM towards management of sustainable Urban Areas

Joint annual Workshops (UN ECE, ISPRS, etc):

1. Sounio 2007

2. Valencia 2008

3. Mainz 2009

4. WGs activities – **case studies on Mega Cities**

5. Expert Group Meeting, **Paris November 2009**

- case studies: Paris, Cairo, London, New York, Istanbul, Lagos?, Asia??
- **FIG publication** on SIM in support of Mega City management
- (by Sydney 2010)
- Workshop in September 2010 title: tbd

The Next Work Plan

- SIM in Risk Assessment / Disaster Management
- Tools and methods to improve knowledge sharing on SDIs and geospatial data bases in the developing countries
- Developing the necessary land tools for facilitating data collection, management and sharing
- Joint annual Workshops in Collaboration with ICA (Commission 2) and ISPRS (Commission 4)
- Increase inter-commission cooperation within FIG
- Increase cooperation among FIG Member Associations & Academic Members
- FIG publication

Highlights:

- Joint session with Commission 8 on Coastal Zone Management at WW2009.
- Publication from WG 4.3, Monitoring Sea Level Rise in the Caribbean in a special Marine Geomatics edition of "Geomatica" (Canadian Journal);
- Ongoing quarterly Commission newsletter in "Hydro International" magazine.
- Cooperation with the University of New Brunswick (UNB) and the Coastal and Ocean Information Network (COINAtlantic) on prototype marine cadastre.
- Cooperation is underway with Commissions 5 and 8 (lead commission) towards a Coastal Zone Development publication to be realised in-part from future joint sessions in Hanoi and Sydney;
- Increased support for and participation in the FIG/IHO/ICA International Advisory Board (IAB) on the Standards of Competence for Hydrographic Surveyors and Nautical Cartographers. Chair WG 4.2 appointed chair IAB.
- Dialogue between WG 4.1, Hydrographic Surveying in Practice and the International Federation of Hydrographic Societies (IHFS) on the revision and publication of a new edition of the IFHS Special Publication 3 (SP3), entitled A Career in Hydrographic Surveying.

Challenges:

- There have been occasions where our national delegate was excluded from the local organizing committee (LOC) for Working Weeks and thus created an obstacle for us in trying to coordinate technical program;
- Resources are stretched as most of our working group chairs are actively engaged in offshore surveying/consulting as well as other professional activities/committees.

Present and Future Hot Topics

- Continuously Operating Reference Stations (CORS) Networks - sharing experiences, methods for quality evaluation e.g international contracts;
- Global Navigation Satellite Systems (GNSS) - development and impact on Surveying;
- Standards in Surveying;
- Heighting with GNSS;
- Educational issue - how to ensure the education of geodesists/surveyors in the future (lack of students...)



Com 6 – Engineering Surveys

2008

- 13th International Symposium on Deformation Measurement, May 12-15, Lisbon (Portugal)
- INGEO – 4th International Conference on Engineering Surveying, Bratislava (Slovakia)
- 1st International Conference on Machine Control & Guidance, June 24-26, Zurich (Switzerland)
- Terrestrial Laser Scanning, November 6-7, Fulda (Germany)



Com 6 – Engineering Surveys

2009-2010

- GEOSIBERIA, April 22-24, 2009, Novosibirsk (Russia)
- 3D Optical Techniques ... , July 1-2, 2009, Vienna (Austria)
- Laserscanning2009 - ISPRS Workshop, FIG Commission 6, September 1-2, Paris (France)
- 10th International Course for Engineering Surveying, February 23-27, Munich (Germany)
- 2nd International Conference on Machine Control & Guidance, FIG Commission 5 and 6, March 9-11, Bonn, (Germany)
- 100 Years ISPRS Centenary Celebrations including ISPRS TC VII Symposium “100 Years ISPRS – Advancing Remote Sensing Science” 5-7 July 2010



Com 6 – Engineering Surveys

The Next Work Plan

- New WG on Machine Guidance and Control
- Revision of Working Groups 6.2 and 6.3
- More involvement with Member Representatives
- Continued good work of WG6.1
- New Chairman of WG6.4
- Maintained and increased involvement with other organisations eg ICE, IMS, ISPRS, IAG
- Continued Collaboration with Com 5
- Improved collaboration with Com 2



Com 7 – Cadastre and Land Management

Highlights

- Land administration, Cadastre, Cadastral systems, Land titling, land tenure, Land consolidation, etc;
- Working groups are all involved in the development of land administration to support sustainable development:
 - Cadastral domain model;
 - Innovative Technology (FLOSS);
 - Development of partnership.
- Successful workshops sponsored by international organizations in Quebec City and Verona.

Future Issues

- Promote land infrastructures as a major contribution to sustainable development;
- Promote good land governance;
- Develop a better response to disaster management;
- Develop cooperation and participation in our works with land surveyors from each part of the world;
- Next annual meeting : 12-16 October Kuala Lumpur, Malaysia

Communication

- Member Associations
 - Working Groups
- Strategic Partners
 - United Nations and World Bank
- Professional Opportunities
 - National and Global

Input to Next Work Plan

- Technical
 - Core = Urbanisation Spatial Planning Disaster Management
 - Coasts = Cross-Commission, Communities
 - Environmental = Dynamic Issues
- Challenges
 - External= Climate and Demographics
 - Internal = Working Groups, Profession

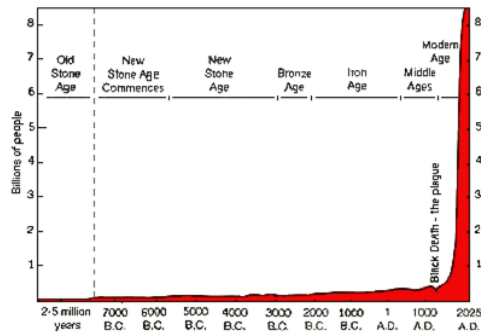
Most important topics 2008-09

- A joint seminar on Appraisal and Property Protection in Beijing on 18-19 October 2008
 - FIG Com 9 (and 8), CIREA, HKIS
- WG 9.1 – Compulsory Purchase and Compensations in Land Acquisition and Takings (Kauko Viitanen)
 - FIG Com 9, 8, 7, FAO, UN-HABITAT, WB etc.
 - 3 publications: 2 special issues journals and 1 book
 - Continuing to prepare 1-2 joint publications with FAO
- WG 9.2 – Improving Slum Conditions through Innovative Financing (Bengt Kjellson)
 - FIG Com 9, 8, 7, 3, 10, UN-HABITAT
 - Special event in Stockholm WW
 - Presentation the outcome in Urban Forum China November 2008
 - Outcome documented in FIG Publication No.44
- Most important, however, has been the active participation of FIG member organisations and their members!

For 2011-2014

- WG 9.1 and 9.2 might continue in some form
- Mortgage Backed Securities?
- Property taxation?
- Financial Crisis and Real Estate?
- Real Estate Management: need to increase activities

World Population



(Westman 2007)

'Project Management' as theme in Work Plan for 2007-10

- Building on very successful sessions in Munich in 2006
- Hong Kong and Stockholm
 - Well attended open forum sessions
 - Informed and lively discussion of good and bad examples of project management (also attended by non Com 10 delegates)
 - Similar session this week to begin distilling accumulated knowledge into a draft 'best practice' guide for discussion in Sydney;

'Commercial Management' Theme

- Informative presentations on many aspects of the management and administration of contracts.
- Addressing issues including procurement strategy, risk allocation and contractual dispute resolution processes and procedures.

A major challenge for the future of Com 10:

- Working with FIG colleagues across all disciplines of surveying to successfully procure and implement projects in the 'new order' business/ economic conditions that may be expected to come with recovery from the current global recession.

**Discussion
and
Feedback...**

- Ensure Support for any of your members already engaged as Commission Officers;
- Ensure you have active National Delegates, ideally for all Commissions;
 - If you cannot afford involvement in all Commissions pick a subset of most relevance to current issues in your country;
- The National Delegates and other active people from your Association should:
 - Attend Commission Meetings today and in Sydney;
 - Contribute to discussions and plans for the current and future work of the Commissions (in person, by email etc);
 - Submit papers for Hanoi and/or Sydney to contribute to the knowledge base and to better inform the future work of the Commissions;
 - Get involved in the new Working Groups for 2011 to 2014.

FIG WW 2009 Eilat

Friday 8th of May 2009



Building a Network

Young

Old

Young Surveyors Network

How can I get involved?

We challenge you to get a Young surveyor involved...



Building a Network

Brain storming for involvement

1. Specific **tasks for Young Surveyors**

e.g. Working Group appointment / research as the profile of the surveyor and future of the profession

National / regional positions

2. Local students to **volunteer** during events

e.g. Working Week in Sweden and Com. 2 Workshop in Vienna

3. **Your ideas**



Building a Network

Continuum of knowledge within the Young Surveyors core group

Challenge

- We have only got **one year** to make this happen

Possibility

- If you have an outgoing young surveyor in your country talk to him/her, we need help **to get them involved...**

Therefore we need all your help, let me know how we can do this!

clinden@kth.se





Student meeting 2009 in Karlsruhe

- The **DVW is sponsoring the accommodation** from 22nd to 23rd Sep. for about 200 people into a gym at the campus of the Karlsruhe University
- On the evening of the 22nd September will be a **come together party**, also partly sponsored by the DVW and organized by the student organizations ARGEOS and KonVerS
- On the 22nd (exact time will be announced into the program) will be a **Session with presentations and discussions for Young Surveyors** at the congress of the INTERGEO
- The fee for visiting the trade fair will be 4€/(person and day) for participants in a group. To get this special fee it is necessary to register before visiting the fair. **The registration should be done until the 15th May 2009**



We would like to welcome you and your young surveyors in Karlsruhe – please contact

t_schwing@web.de





FIG

BID PROPOSAL FOR THE HOSTING OF FIG WORKING WEEK IN NIGERIA IN 2013



NIS

OUTLINE

- THE HOSTING ORGANIZATION
- THE HOSTING COUNTRY
- WHY HOSTING FIG WORKING WEEK IN NIGERIA?
- THE PROPOSED CITY FOR THE CONFERENCE
- PROPOSED VENUE FOR OPENING CEREMONY
- PROPOSED CONFERENCE HOTEL
- MEETINGS AND CONFERENCE FACILITIES
- THE CONFERENCE PROGRAMME
- SUPPORTING ORGANIZATIONS
- SUPPORT TO DELEGATES
- PLACES OF INTEREST IN ABUJA
- CONCLUSION

Nigeria
United People United Nation



NIS

THE HOSTING ORGANIZATION

NIGERIAN INSTITUTE OF SURVEYORS (NIS)



- Member of the International Federation of Surveyors (FIG)
- Has a membership strength of about 2,000, comprising of Students, Associate members, Full members and Fellows. It is one of the oldest organized Professional Bodies in Nigeria (since 1934).
- The theme of the conference will be linked to the **SURVEYORS ROLE IN ACHIEVING THE MILLENNIUM DEVELOPMENT GOALS**



NIS

THE HOSTING COUNTRY

The Federal Republic of NIGERIA

- Is located in West Africa and has international boundaries with five countries namely Cameroon in the East, Benin Republic in the West and Niger and Chad in the North. It is bounded by the Atlantic Ocean in the South with a coast line of about 853kms.
- It has six international airports with **Abuja and Lagos** being the major hubs. It is also serviced by three major seaports located in Lagos, Port Harcourt and Calabar. It is an Oil & Gas producing nation.
- Nigeria enjoys a warm sub-tropical climate and has two major seasons namely: Dry season from November- April, and the Rainy Season from May - October
- The time zone in Nigeria is GMT +1
- The National currency is Naira (=N=)

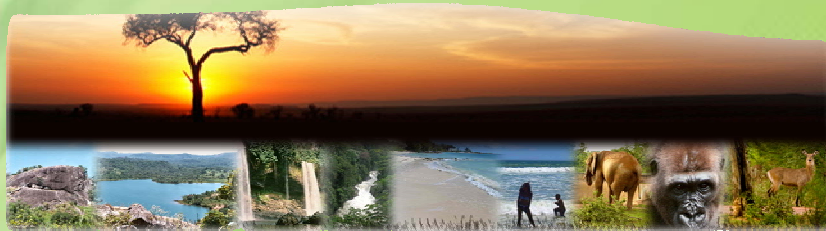




NIS

Main Attraction

Nigeria offers a wide variety of tourist attractions such as water falls and ocean beaches ideal for swimming and other water sports, unique wildlife, vast tracts of unspoiled nature ranging from tropical rain forest, savanna to magnificent waterfalls.



NIS

WHY HOST FIG WORKING WEEK IN NIGERIA?

	Country (Africa)	Year
1	Nairobi, Kenya	2001
2	Marrakech, Morocco	2003
3	Accra, Ghana	2005

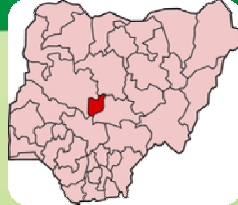
- From the lists above, it can be seen that Nigeria, a country with an enormous population of Surveyors, a nation with rich cultural and natural resources, has not had the opportunity of hosting this event.
- NIS will partner with the Government of the Federal Republic of Nigeria to host the Working Week if given the hosting rights.





NIS

THE PROPOSED CITY FOR THE CONFERENCE



ABUJA

- The Capital City of Nigeria, the fastest growing city in Africa and Nigeria's 1st planned city.
- Divided into 4 districts: Central, Garki, Wuse and Maitama.



Nigeria
Good People Great Nation



NIS

PROPOSED VENUE FOR OPENING CEREMONY

Abuja International Conference Center

- Its a magnificent edifice located in the city center, close to Le Meridien Hotel, adjacent to the ECOWAS PARLIAMENT.
- Has hosted Commonwealth Heads of States, Africa Union Heads of States and the visit of President Bill Clinton ... etc.



Nigeria
Good People Great Nation



NIS

PROPOSED CONFERENCE VENUE AND HOTEL

THE TRANSCORP HILTON ABUJA

- Located in the centre of the business area and easily accessible from all parts of Federal Capital, Abuja.
- Set in beautiful landscaped gardens , it offers all the services of an international business hotel equipped with all ultra modern facilities.



Nigeria
Good People Great Nation



NIS

Hotel Services

- Recreational Facilities, Medical and Dental clinics
- Business Service centre and internet facilities
- Mini Zoo and Casino
- Club Lounge and 2 Executive floors
- Conference/Meeting/Exhibition and Banqueting facilities
- National and International cuisine



Nigeria
Good People Great Nation



NIS

MEETINGS AND CONFERENCE FACILITIES

Conference Halls

The Transcorp Hilton offers 23 individual meeting rooms of varying capacity between 30 – 1200 delegates.



Facilities

Each hall has standard facilities supported by exhibition and break out areas.



NIS

HOTEL AMENITIES

These include:

- High speed internet access
- Beauty salons
- Shopping Malls
- Currency exchange
- VISA Card, Mastercard and others accepted
- ATM
- News stands
- Sports centres





OTHER HOTEL ACCOMMODATIONS FOR PARTICIPANTS

NIS

- | | |
|--------------------------|-------------------------------|
| 1) Abuja Sheraton Hotels | 8) Valentia Hotel |
| 2) Le Meridien | 9) Reiz Continental Hotel |
| 3) Rock view Hotel | 10) Top View Hotel |
| 4) Agura Hotel | 11) Bolton White Hotel |
| 5) Bolingo Hotel | 12) Top Rank Hotel |
| 6) Nikon Luxury | 13) Chelsea Hotel |
| 7) Denis Hotel | 14) Chida International Hotel |
| 15) Protea Hotel | |

There are other standard hotels but the above are within a short distance (5 – 10 minutes drive) from the Conference Venue/Hotel



CONFERENCE ATTENDANCE & PROGRAMME

NIS

Estimate of Attendance

Based on improved attendance at the FIG programme in the last couple of years, and the need to promote good governance through the international communities, we are estimating about 2,500 delegates including about 1,500 host country, Nigeria.

The Programme

Apart from the standard technical sessions, the programme will include social events, technical and social tours, gala dinner, FIG Foundation Dinner and an opening and closing ceremony which will display the rich Nigerian Cultural heritage.





SUPPORTING ORGANISATIONS

NIS

- The Nigerian Institution of Surveyors (**NIS**)
- Surveyors Council of Nigeria (**SURCON**)
- Office of Surveyor General of Federation (**OSGOF**).



NIS

- Ministry of Federal Capital Territory.
- Federal Ministry of Transport.
- Federal Ministry of Housing.
- Nigerian Tourism Development Corporation
- Oil and Gas Multinational Companies (e.g. **Shell, ExxonMobil, Chevron** etc)
- Other Corporate Friends of the Institution.





SUPPORT TO DELEGATES

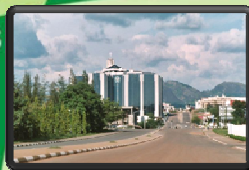
NIS

- Abuja City has well-coordinated municipal taxi services running regularly to and from the City Centre to all Districts and the airport.
- There is regular Airport Shuttle to the hotels and conference venue.
- To assist delegates hospitality desk shall be established at the Abuja International Airport.
- During the conference participants will have access to transport to and from their hotels to the Conference venue.
- An interactive Website will be launched for details on the event



SOME PLACES OF INTEREST IN ABUJA

NIS



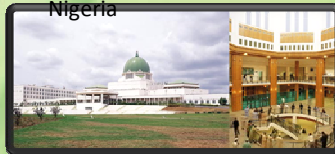
Central Bank of Nigeria



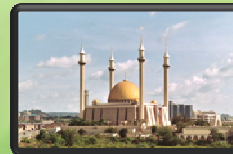
Zuma Rock



Naval HQ



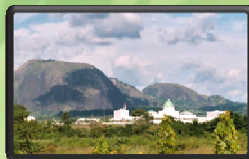
National Assembly



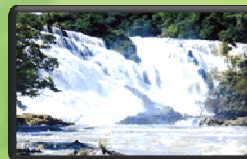
National Mosque



International Conference Centre



Aso Hills



Gurara Waterfalls





SECURITY

NIS

- ❑ Abuja, the proposed host City of the FIG 2013 Working Week is located at the centre of Nigeria, about 500km from the Niger Delta Area.
- ❑ Crime rate is very low in Abuja and night life in the city is very vibrant.
- ❑ We will enlist the services of security agencies day and night to provide adequate surveillance and security to the Conference Venue/hotels as well as the Abuja Municipality during the entire conference period



CONCLUSION

NIS

- Abuja the Federal Capital City of Nigeria has the required infrastructure to host the FIG Working Week 2013. It has played host to many international events and conferences ranging from sports, economics, commerce, international relations and many more.
- Nigeria has consistently ranked second in the number of attendees in FIG Conferences, and has enough resource persons within the Nigerian Institution of Surveyors to collaborate with FIG in hosting the Working Week, which will be handled by a reputable event managers.





NIS

Thank you !
Thank you !!
Thank you !!!



Nigeria
Good People Great Nation

The 7th FIG Regional Conference
Spatial Data Serving People
Land Governance and the Environment – Building the Capacity
Hanoi, Vietnam, 19–22 October 2009

FIG



7th FIG Regional Conference Hanoi, Vietnam, 19-22 October 2009

hosted by



FIG and



Viet Nam Association of Geodesy, Cartography and
Remote Sensing, VGCR

The 7th FIG Regional Conference
Spatial Data Serving People
Land Governance and the Environment – Building the Capacity
Hanoi, Vietnam, 19–22 October 2009

FIG



Spatial Data Serving People: Land Governance and the Environment - Building the Capacity

- Land Administration
- Spatial Data Infrastructure (SDI) and the Environment
- Capacity Building
- FIG Publication on Land Acquisition in developing economies



Land Administration

- Land administration in Vietnam
- WB projects in the SEA region
- Land acquisition in developing economies



SDI and the Environment

- SDI developments in Vietnam
- Climate change and disaster risk management
- Decentralisation and environmental management

The 7th FIG Regional Conference
Spatial Data Serving People
Land Governance and the Environment – Building the Capacity
Hanoi, Vietnam, 19–22 October 2009



Capacity Building

- Professional standards and ethics
- Surveying education in Vietnam and SEA region
- Promoting public private partnership

The 7th FIG Regional Conference
Spatial Data Serving People
Land Governance and the Environment – Building the Capacity
Hanoi, Vietnam, 19–22 October 2009



**FAO Regional Conference on Voluntary
Guidelines for responsible governance
of tenure of land and other natural
resources
20-21 October 2009**

The 7th FIG Regional Conference
Spatial Data Serving People
Land Governance and the Environment – Building the Capacity
Hanoi, Vietnam, 19–22 October 2009

FIG



Venue

- National Conference Centre, Hanoi
- Hanoi Daewoo Hotel 140-170 USD
- Other hotels 50-120 USD

The 7th FIG Regional Conference
Spatial Data Serving People
Land Governance and the Environment – Building the Capacity
Hanoi, Vietnam, 19–22 October 2009

FIG



Fees

- Full delegate by 15 August 2009 – 300 EUR
- Accompanying persons 150 EUR
- Students 100 EUR
- Includes: lunches, Vietnamese Dinner (Foundation event), Conference Dinner, Ha Long Bay

The 7th FIG Regional Conference
Spatial Data Serving People
Land Governance and the Environment – Building the Capacity
Hanoi, Vietnam, 19–22 October 2009

FIG



Important Dates

- 10 June – deadline for abstracts
- 30 June notification of authors
- 15 August – deadline for early bird registration
- 15 August – deadline for papers
- 19-22 October - Conference

The 7th FIG Regional Conference
Spatial Data Serving People
Land Governance and the Environment – Building the Capacity
Hanoi, Vietnam, 19–22 October 2009

FIG



See you in Hanoi 19-22 October 2009
Welcome!

www.fig.net/vietnam

The XXIV FIG International Congress 2010

Sydney Convention & Exhibition Centre



11 – 16 April 2010



Facing the Challenges

- Building the Capacity

**We look forward to welcoming you to
Sydney in 2010**

11 – 16 April 2010

Hosted by

The Institution of Surveyors Australia

International Federation of Surveyors



Congress theme

Facing the Challenges

- Building the Capacity

www.fig2010.com



11 – 16 April 2010

Venue:

Sydney Convention & Exhibition Centre



www.fig2010.com



11 – 16 April 2010

Program Highlights

400 oral presentations, 350 flash presentations

Forum for Chief Executive Officers

Topics will include - cadastre, GNSS, engineering, hydrography, valuation, town and city planning, sustainable development and the broad surveying and spatial information interface

10 Technical Tours and Field Trips

FIG Congress for the 1st time in 15 years in Southern Hemisphere

www.fig2010.com



11 – 16 April 2010

Keynote Speakers Include



**Professor
Tim Flannery**



**Professor
Mary O'Kane**



Abbas Rajabifard
President, GSDI

www.fig2010.com



11 – 16 April 2010

Keynote Speakers Include



Warwick Watkins
Director General,
Department of Lands &
NSW Surveyor General



**Professor
Stig Enemark**
FIG President



Santiago Borrero
Secretary General,
PAIGH

www.fig2010.com



11 – 16 April 2010

What can we expect?

- Well known keynote and plenary speakers
- 2,500 registrants from all over the world
- Registration fee of about A\$1,000 (about 500 € or 700 US\$) for a 4 day Congress)
- 8-10 parallel sessions for 4 days: 400 papers
- Electronic poster sessions: 350 flash presentations
- “At cost” accompanying persons program
- 100 exhibitors
- ‘Home visits’ program
- Technical tour program

A good time!!!

www.fig2010.com



11 – 16 April 2010

Program updates

Call for Papers open now, visit www.fig2010.com

Technical tours to include;

Land Mangement,
Hydrographic Surveying,
History of Surveying,
Spatial Data Management,
Valuation,
CORS Network and E-Planning

www.fig2010.com

www.fig2010.com



11 – 16 April 2010

Social & Tours Program

- Welcome Reception at Sydney Town Hall
- Harbour Cruise (Foundation Dinner)
- Home Visits
- Gala Dinner
- Hunter Valley & Blue Mountains
- Accompanying Persons Package



www.fig2010.com

11 – 16 April 2010

Important dates:

- Online Registration opens: 30 May 2009
- Abstract & Peer Review by: 22 Sept 2009
- Full Paper Deadline by: 21 Jan 2010
- **Early Bird Registration closes: 28 Jan 2010**
- Author Registration by: 28 Jan 2010
- Social Program and Tours by: 8 March 2010
- Late Registration from: 8 March 2010

www.fig2010.com





Young Surveyors Beyond Horizons

Pre-Congress Activities:

- 150th anniversary of raising the flag on Central Mount Stuart, Australia's "geographical centre"
- Surveying for Machine Automation in the Australian wine industry (Barossa Valley)
- ACT border surveys commemoration.



11 – 16 April 2010



Save the dates in your diary

11 – 16 April 2010

www.fig2010.com

