



XXVII FIG CONGRESS

11-15 SEPTEMBER 2022
Warsaw, Poland

Volunteering
for the future –
Geospatial excellence
for a better living

National Sensor Registry a Step Forward

Magdalena Grus, Kadaster, The Netherlands

Marc van Andel, Kadaster, The Netherlands

Ronald Bokhove, Kadaster, The Netherlands



ORGANISED BY



PLATINUM SPONSORS



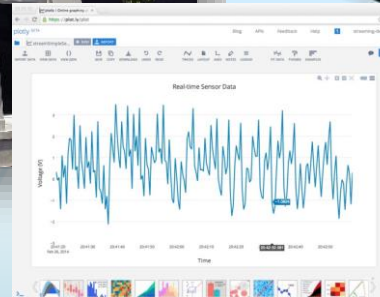
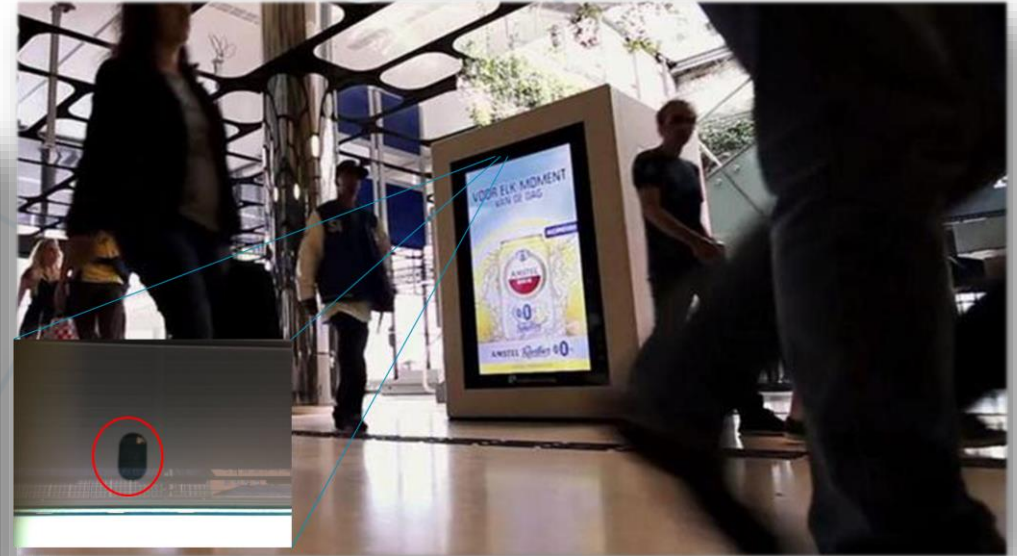


🏠 agenda

1. Problem definition
2. Key concepts
3. Solution
4. Implementation
5. Citizens participation



Problem definition



Problem definition

Niemand controleert big brother

slimme stad - Sennep... gemeente zijn, maar...
burgers ongem... winkeliers', aldus...
Garanties vo... dovoerder. Al die...
blijkt uit on... art brengen zou erg...
SASKIA NAAR... ageerde de...
TEEFFELEN... jk wethouder eerder...
ragen.

De moderne stad hangt...
sensoren die het gedrag...
bewoners volgen. Maar waar ze...
hangen, wat ze precies meten en...
wat er met de verzamelde...
gegevens gebeurt, is vaak...
onduidelijk. Contracten tussen...
gemeenten en bedrijven die de...
technieken leveren, blijven ge...
Experts hekelen dat gebrek...
transparantie.

Het gaat onder meer om...
beveiligingscamera's en...
geluidsmeters die schreeuwen...

Who owns the sensor?

Where are the sensors?

Where can I find the sensor data?

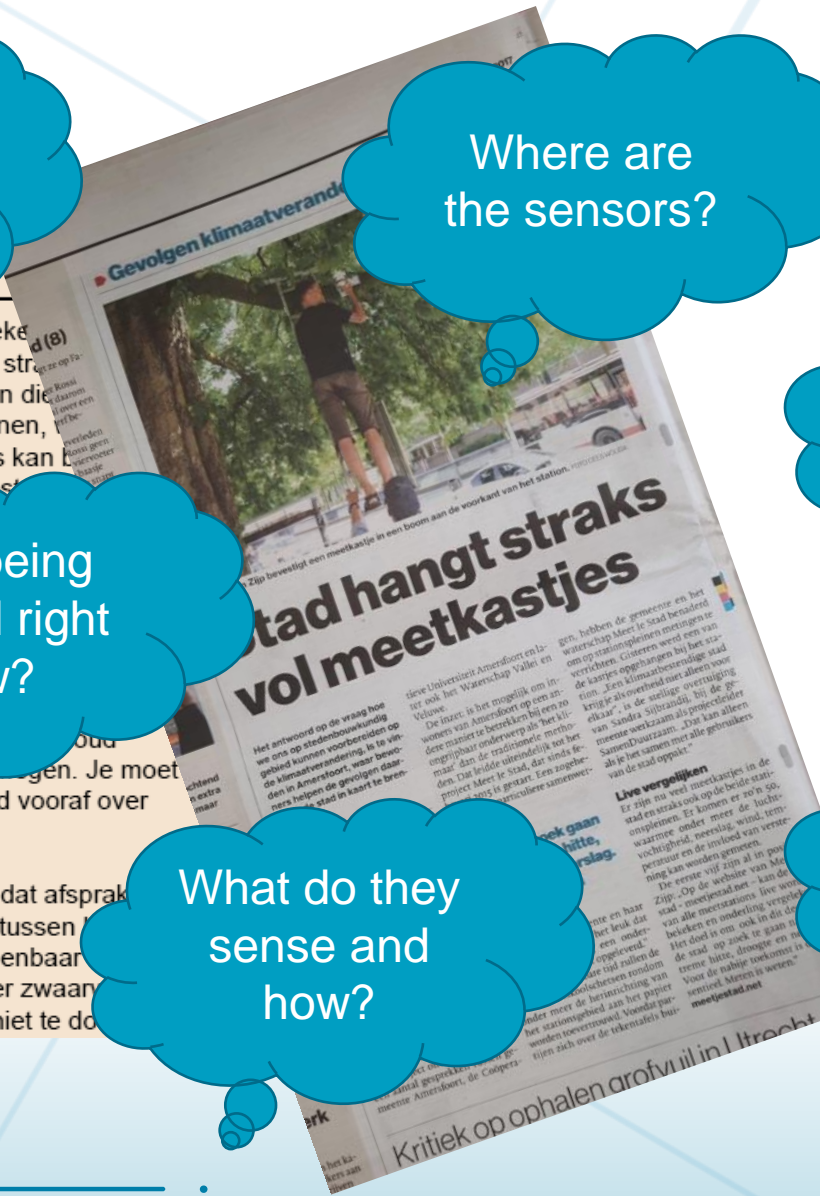
Can I use the sensor data?

Am I being sensed right now?

How many sensors are there?

What do they sense and how?

Who maintains the sensor?



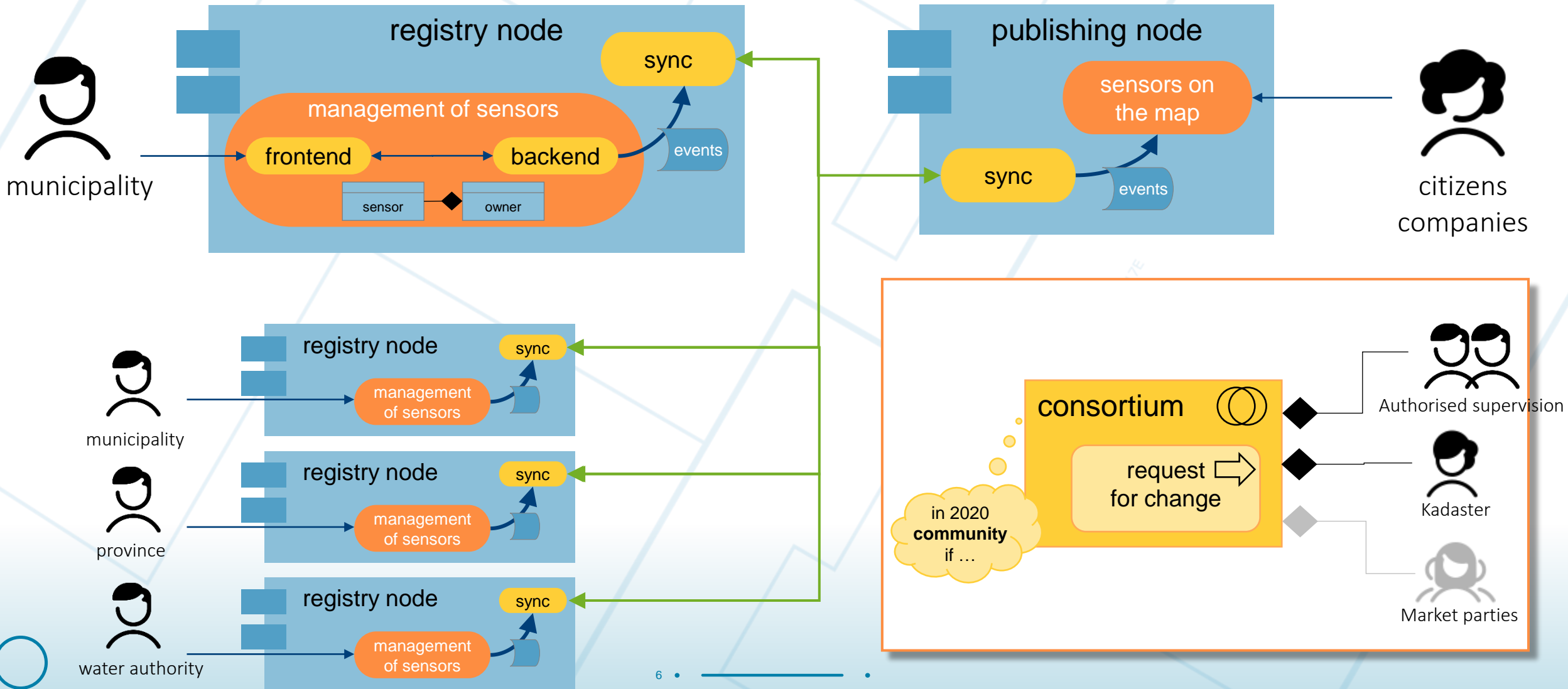
Sensor registry - key concepts



- Information about ‘what is being sensed where and by whom’
- Accessible for everyone (companies, citizens, government)
- Public and easy to find
- Uniform, trustworthy and nationwide



Solution – Sensor Registry Network





Solution – Local Registry Tool

- Connected and integrated into the whole IT eco-system of f.e municipality
- Highly flexible and adaptable for different IT eco-systems and set ups
- Be able to be connected to other Registry Tools as well of other local governments



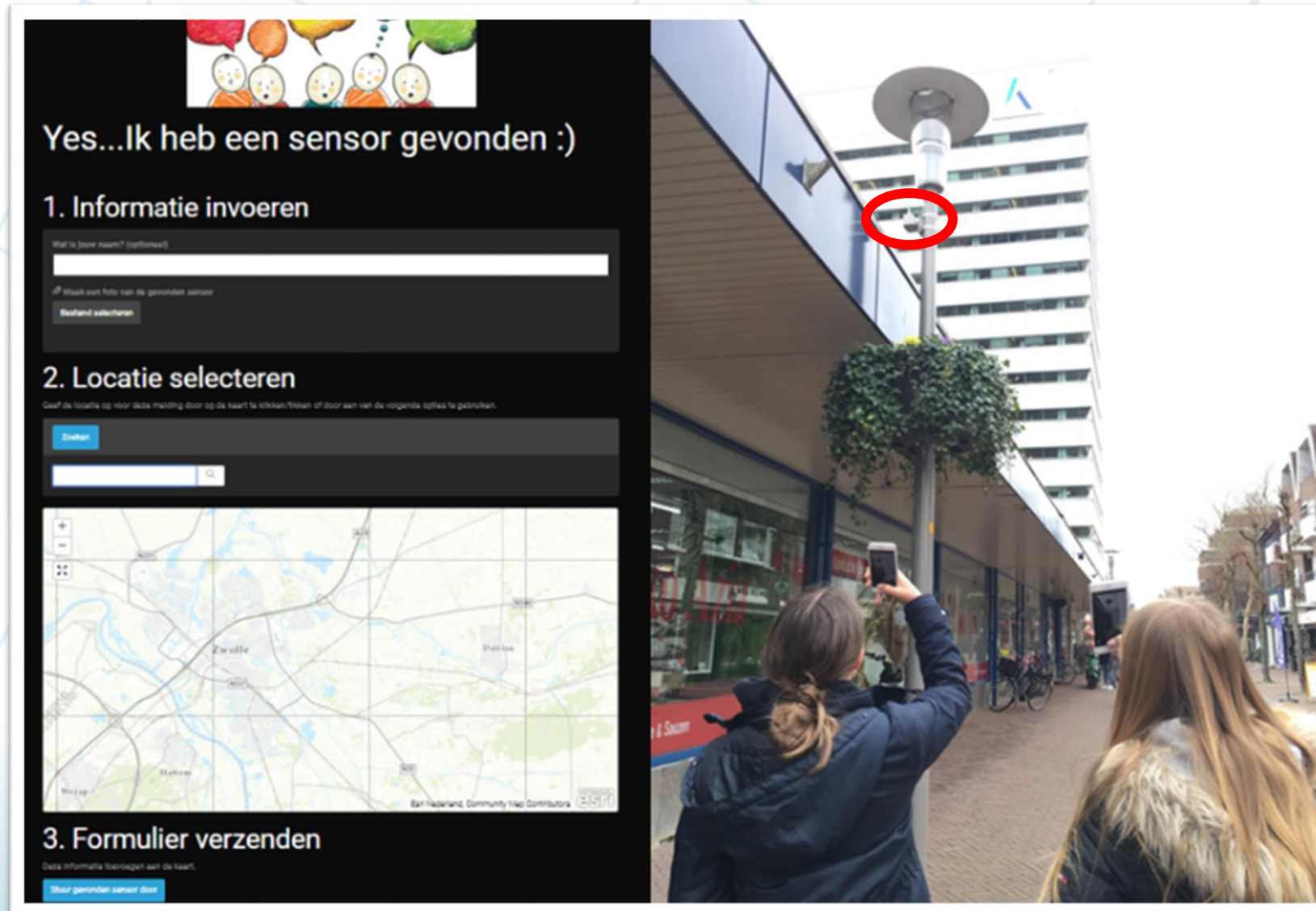
Solution - central Viewer

SensRNet - The Dutch National Sensor Registry Network

Links	
Central Viewer	Registry Node (demo)
Central Viewer (test)	Registry Node (test)



Citizens participation - sensor walk



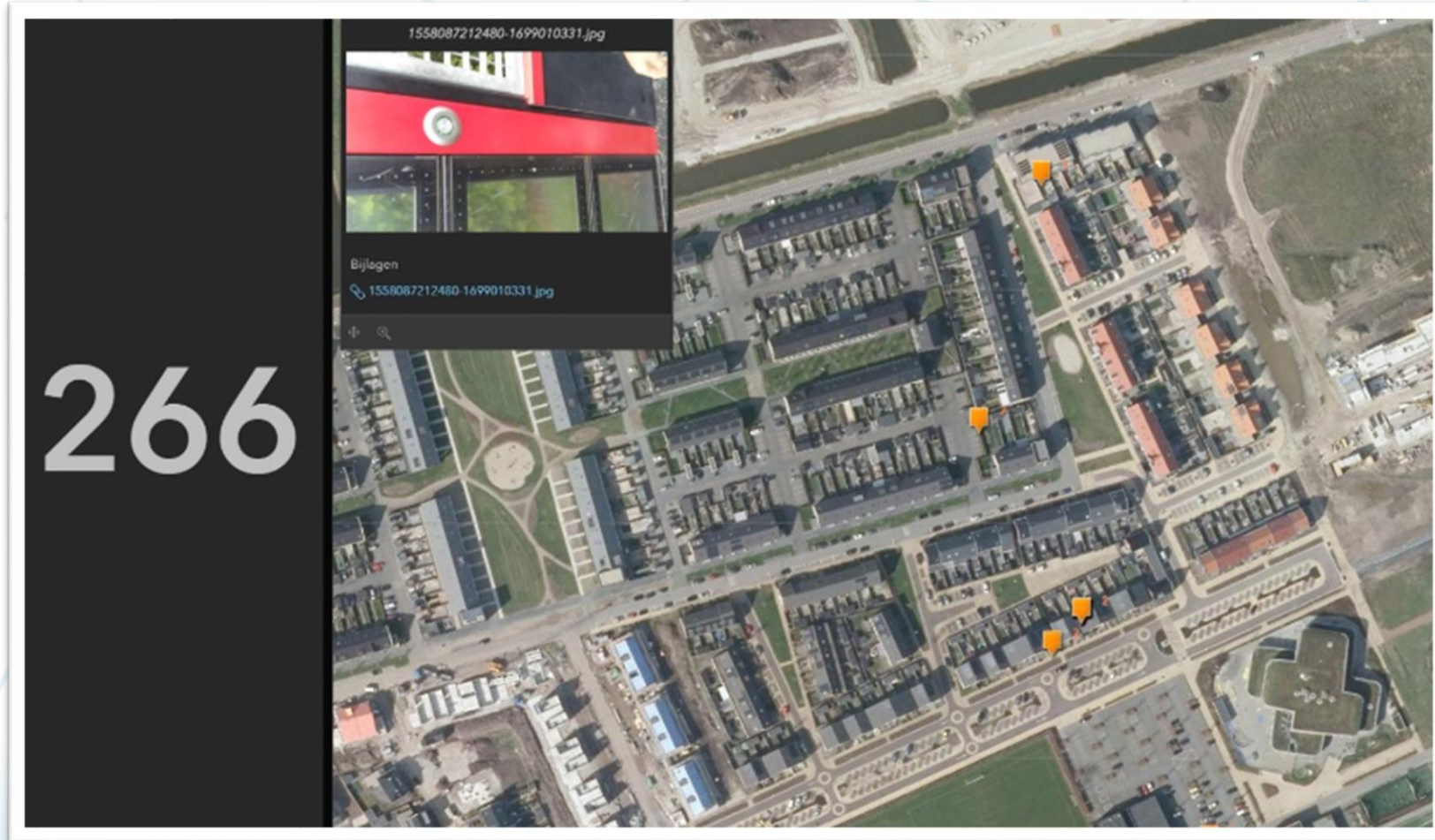
The image shows a mobile application interface on the left and a photograph of a street scene on the right. The application interface is titled "Yes...Ik heb een sensor gevonden :)" and is divided into three main sections:

- 1. Informatie invoeren**
This section contains a form with the following elements:
 - A text input field labeled "Wat is jouw naam? (optioneel)".
 - A checkbox labeled "Stuur een foto van de gevonden sensor".
 - A button labeled "Bekend selecteren".
- 2. Locatie selecteren**
This section contains a search bar with a "Zoeken" button and a map of a city area. The map shows streets, a river, and several districts including "Zinville" and "Flakke".
- 3. Formulier verzenden**
This section contains a button labeled "Stuur gevonden sensor door".

The photograph on the right shows a street scene with a modern building in the background. A lamppost is visible, and a red circle highlights a small sensor mounted on it. Two people are in the foreground: one is holding a smartphone up to take a photo of the sensor, and the other is standing next to them.



Citizens participation - sensor walk



Dashboard with collected sensors visualization



kadaster



Thank you