

FIG

FIG WORKING WEEK 2017

Helsinki Finland

29 May - 2 June 2017

Presented at the FIG Working Week 2017,
May 29 - June 2, 2017 in Helsinki, Finland

Land consolidation and land readjustment for sustainable development

The issues to be addressed

Marije Louwsma (Kadaster), Christiaan Lemmen (Kadaster),
Morten Hartvigsen (FAO), Juhana Hiironen (Aalto
University), Jean du Plessis (GLTN – UN Habitat), Mansha
Chen (World Bank), Peter Laarakker (LAR&S)

Surveying the world of tomorrow -
From digitalisation to augmented reality

Organised by



Platinum Sponsors:





FIG WORKING WEEK 2017

Surveying the world of tomorrow -

Helsinki Finland 29 May - 2 June 2017

From digitalisation to augmented reality

The Sustainable Development Goals



The 5 P's:

- People; to end *poverty* and *hunger*
- Planet; protect the planet to support the needs of the *present and future* generations
- Prosperity; economic, social and technological *progress* occurs *in harmony with nature*.
- Peace; *just and inclusive societies* which are free from fear and violence
- Partnership; global solidarity, with the *participation* of all countries, all stakeholders and all people



Platinum Sponsors:





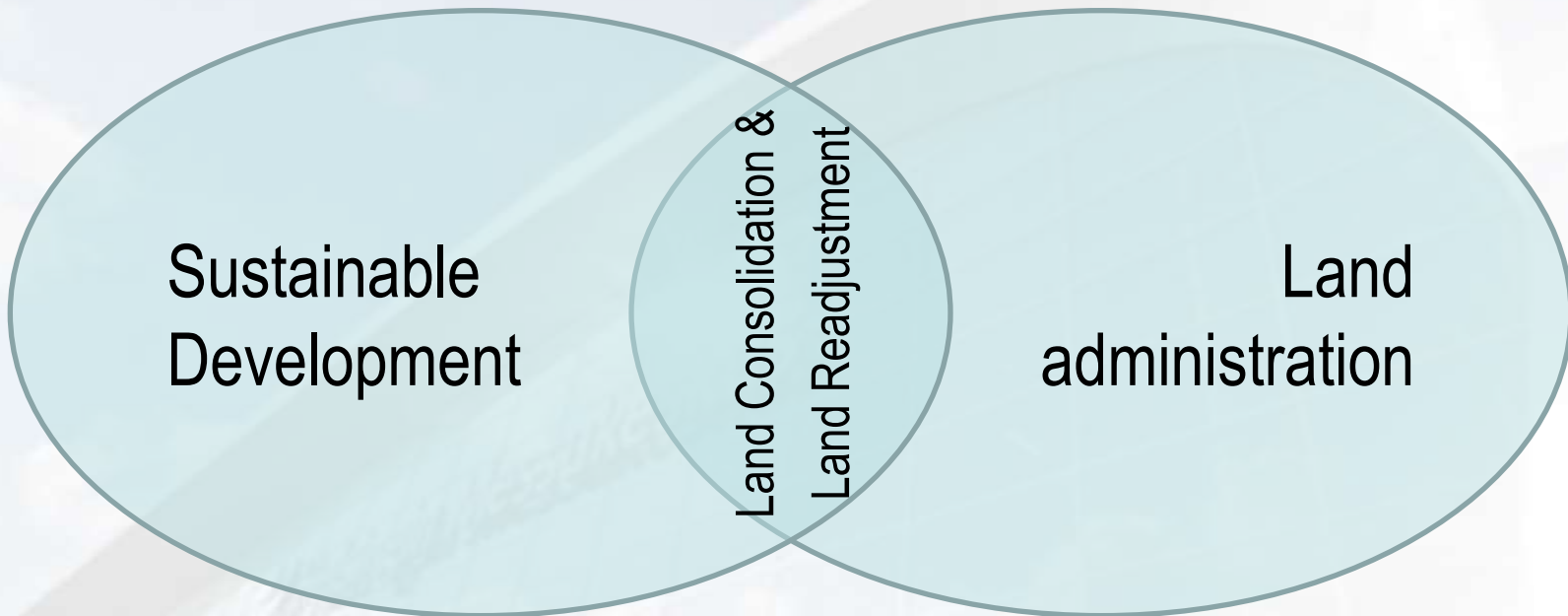
FIG WORKING WEEK 2017

Surveying the world of tomorrow -

Helsinki Finland 29 May - 2 June 2017

From digitalisation to augmented reality

SDG's and VGGT's



Platinum Sponsors:





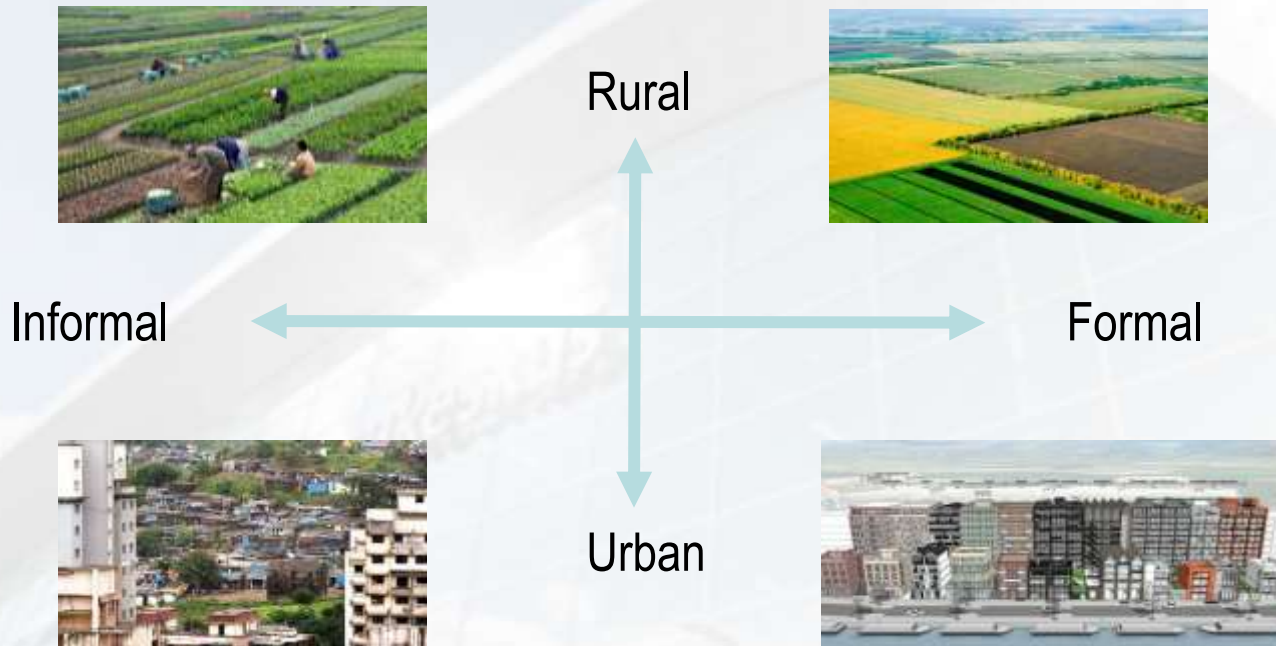
FIG WORKING WEEK 2017

Surveying the world of tomorrow -

Helsinki Finland 29 May - 2 June 2017

From digitalisation to augmented reality

The Context of Land Consolidation and Land Readjustment



Platinum Sponsors:





FIG WORKING WEEK 2017

Surveying the world of tomorrow -

Helsinki Finland 29 May - 2 June 2017

From digitalisation to augmented reality

What can LC and LR contribute?

- **Optimise spatial allocation for sustainable use of land**
- Increase food production
- Improve connectivity between urban – rural areas to
 - transport food to cities
 - allow for access to markets and labour
- Improve livelihood in urban areas
- Protect the environment and prevent further damage
- Mitigate and adapt to effects of climate change
- Deliver a sound registration of rights and responsibilities
- ...



Platinum Sponsors:





FIG WORKING WEEK 2017

Surveying the world of tomorrow -

Helsinki Finland 29 May - 2 June 2017

From digitalisation to augmented reality

Underpinning principles

- No one-size-fits-all solution but fit-for-purpose
- Comprehensive approach for sustainable development
- Participatory and inclusive processes
- Strong tie between land administration and LC & LR



Platinum Sponsors:



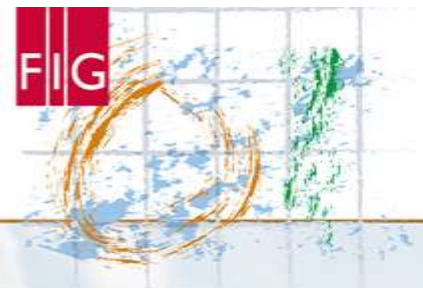


FIG WORKING WEEK 2017

Surveying the world of tomorrow -

Helsinki Finland 29 May - 2 June 2017

From digitalisation to augmented reality

Some examples

Forest land consolidation in Pahkakoshi (Finland):

- Higher production due to drainage among others, results in CO2 reduction

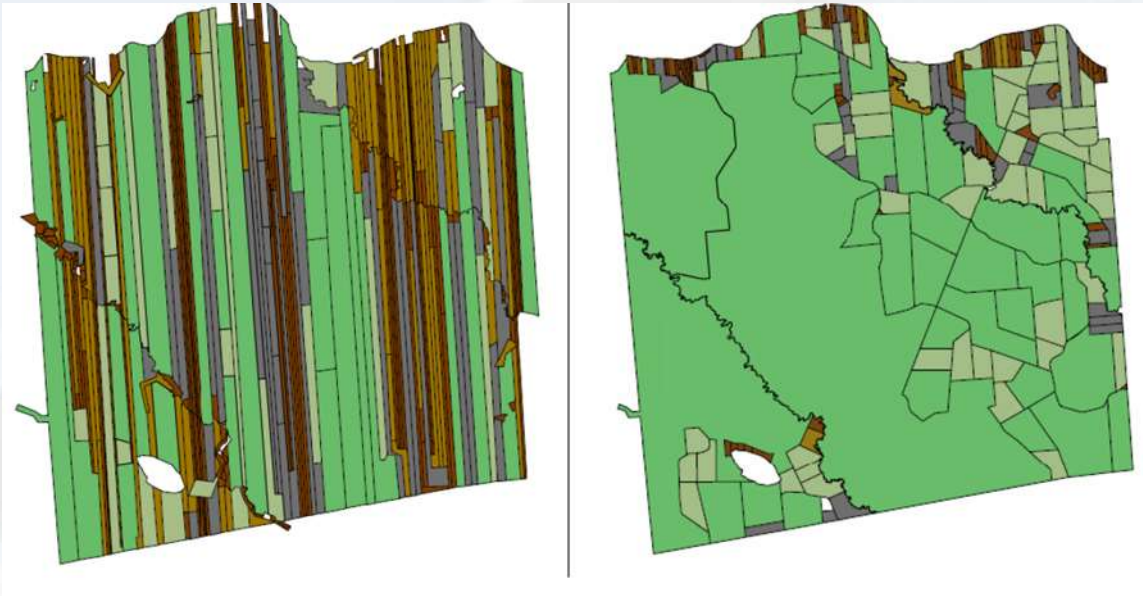




FIG WORKING WEEK 2017

Surveying the world of tomorrow -

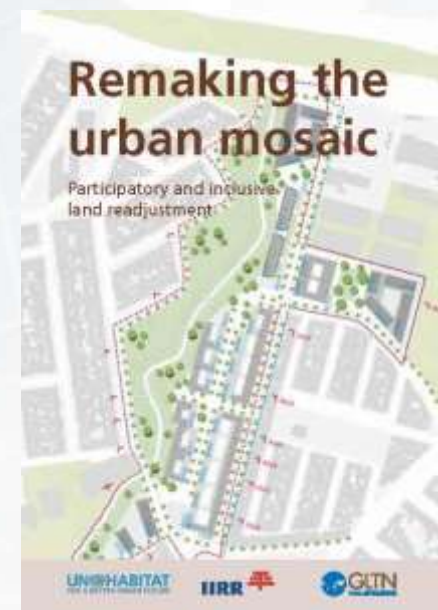
Helsinki Finland 29 May - 2 June 2017

From digitalisation to augmented reality

Some examples

Participatory and inclusive land readjustment in Medellin (Colombia):

- Capturing a proportion of the value created by development enables space for public use
- Improve urban development with respect for the needs of society at large and the rights of individuals
- La Candelaria in Medellin first pilot project of PILaR



Platinum Sponsors:





FIG WORKING WEEK 2017

Surveying the world of tomorrow -

Helsinki Finland 29 May - 2 June 2017

From digitalisation to augmented reality

Guidelines and recommendations

- We call upon parties (governments, land owners/users, academia, cadastres, spatial planners, professionals, international development agencies and non-government organisations) to work together to contribute to the implementation of mentioned principles
- Further develop the approach in the context of the global agenda
- Share knowledge and experience on strategic and operational level

17 PARTNERSHIPS
FOR THE GOALS



Platinum Sponsors:





FIG WORKING WEEK 2017

Surveying the world of tomorrow -

Helsinki Finland 29 May - 2 June 2017

From digitalisation to augmented reality

Discussion

- The interplay between different geographical levels in relation to decisions and solutions, e.g.:
 - Is it better to intensify agriculture in certain areas (local, regional, national, international) to save vulnerable areas elsewhere?
 - Or can we better aim for organic agriculture overall?
- The role of policies for a sustainable development in addition to land tools such as land consolidation and land readjustment
- The interplay between institutional arrangements and the implementation of LC & LR



Platinum Sponsors:





FIG WORKING WEEK 2017

Surveying the world of tomorrow -

Helsinki Finland 29 May - 2 June 2017

From digitalisation to augmented reality

Thank you for your attention

Link to [Apeldoorn Declaration](#)



Platinum Sponsors:

