

# **Keeping Current with ICT The Latest Technology from ESRI**

***FIG Commission 7 Annual Meeting  
Bled, Slovenia – May 2006  
Kevin Daugherty  
ESRI***

# The Growing Business of GIS



*... Has many facets*

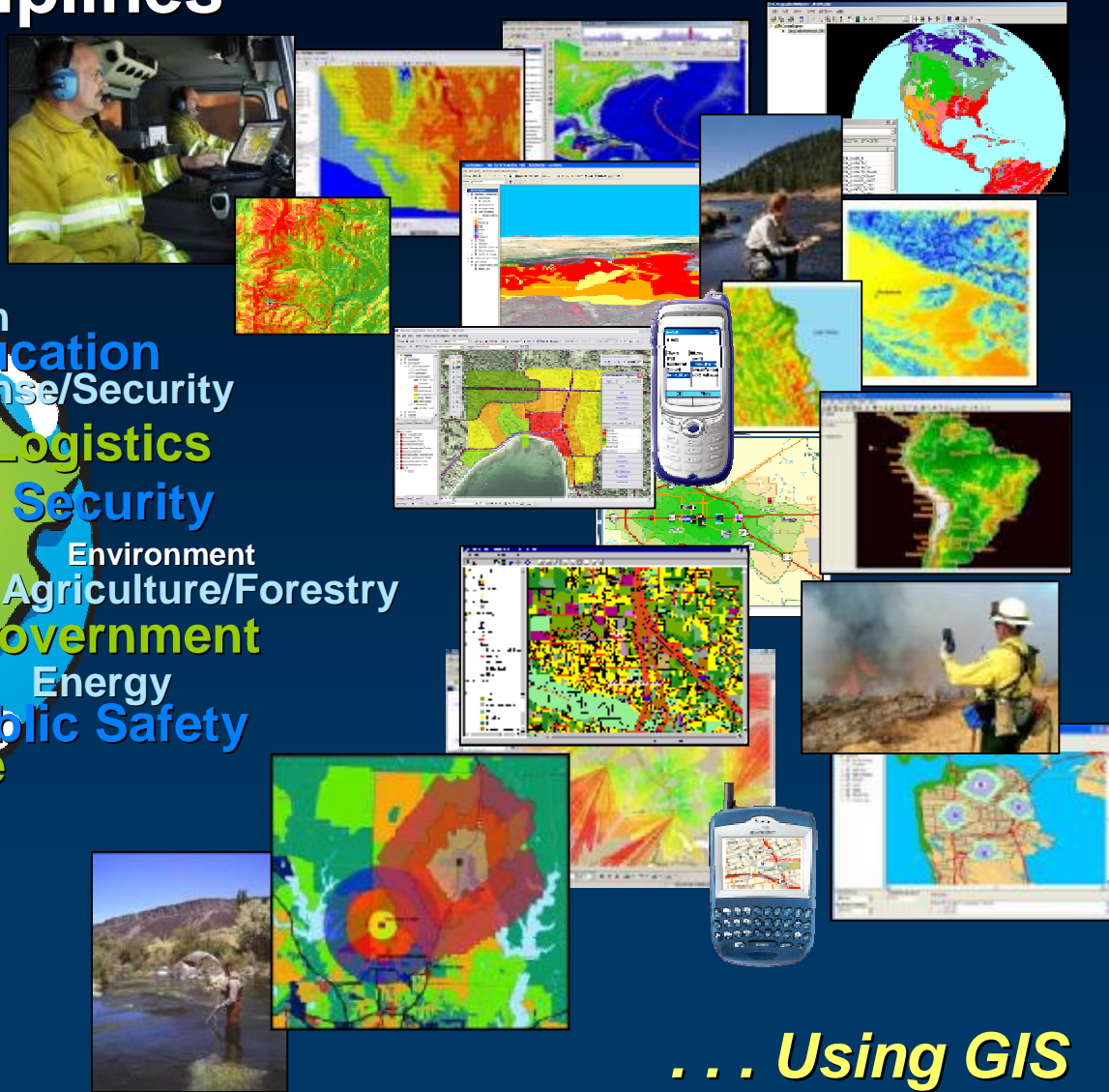
# A Growing Number of Professionals

*Around the World - Many Disciplines & Interests*



# Information Communication Technology Serves Many Disciplines

Utilities  
Health  
Education  
Defense/Security  
Logistics  
Security  
Environment  
Agriculture/Forestry  
Government  
Energy  
Public Safety  
Crime  
Oceans  
Land Use  
Conservation  
Pollution  
Urbanization  
Modeling  
Biodiversity  
Water



*... Using GIS*



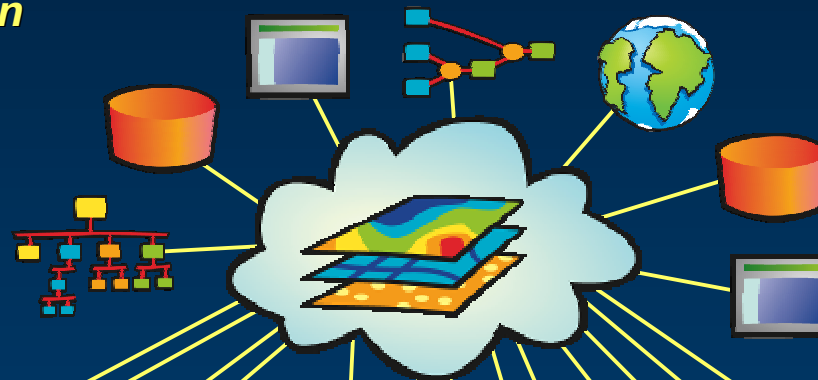
# Individual Systems Will Be Connected into a System of Systems

## Facilitated by . . .

- Standardized Data Models
- GIS Portals
- Networks of Providers
- Collaboration Agreements
- Leadership and Organization
- Technology

*. . . And Cooperation*

## GeoWeb



*. . . Providing New Capabilities For Integration, Collaboration And Improvement*

*...Helping Better Manage Our World*

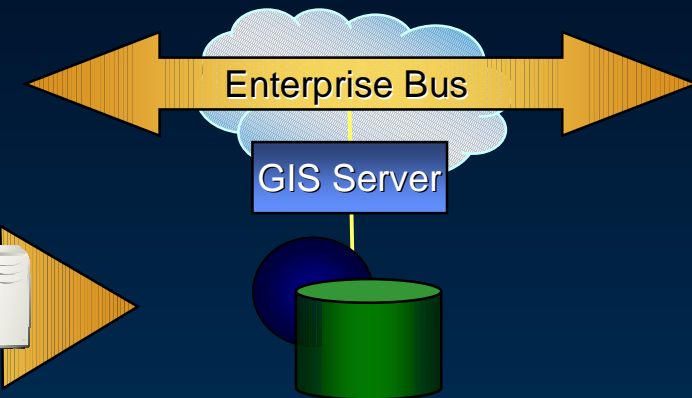
# Enabling Technology

- Faster Processing
  - Multicore
  - Blades
- Increased Bandwidth
- Larger Storage
- Web Services Standards
- Mobile Technologies
- Real-Time Networks
- **GIS Software**

**Scalable  
Networked  
Hardware**



## Services-Oriented Architecture



**Open, Flexible, and Standards Based**

# ESRI's Software Strategies

- Enhance ArcGIS Desktop
- Strengthen / Simplify Geodata Management
- Extend ArcGIS Server
- More Mobile GIS



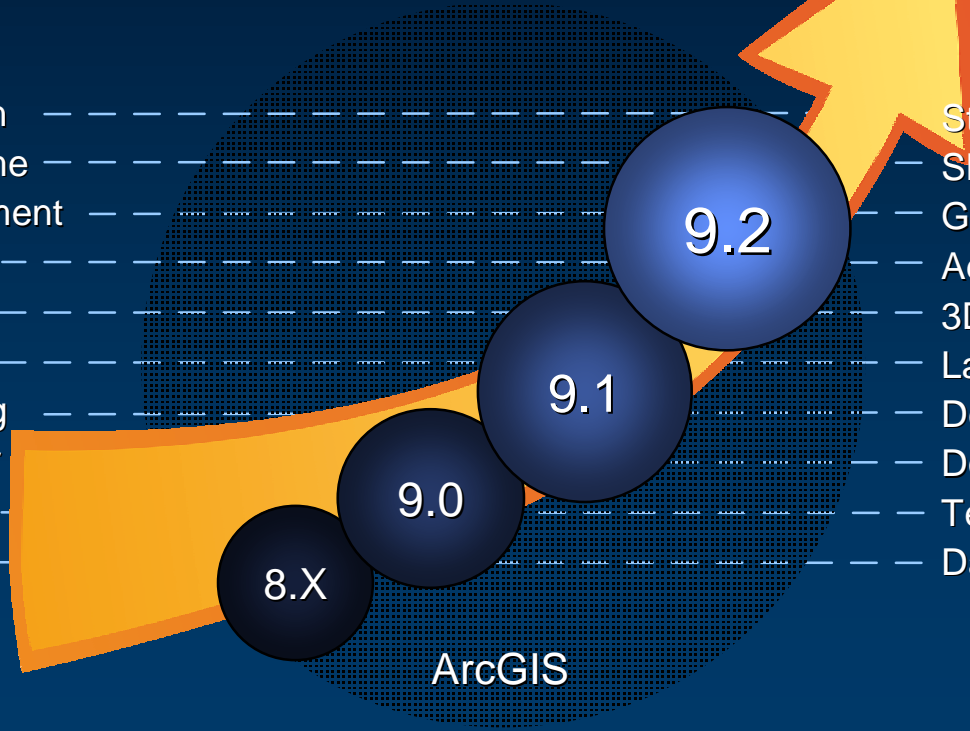
*... With Increased Focus on Quality,  
Usability and Performance*

# ESRI Is Focused On A New Generation of Products

*Hundreds of Enhancements*



- Documentation
- Temporal / Time
- Data Management
- Smart Clients
- Tracking
- Cartography
- Geoprocessing
- Image / Raster
- Mobile
- Server



- Standards / Interoperability
- Sketching / Design
- Geospatial Viewers
- Address Geocoding
- 3D Visualization
- Land Records
- Developer
- Documentation
- Terrain Surface Modeling
- Data Compilation and Editing

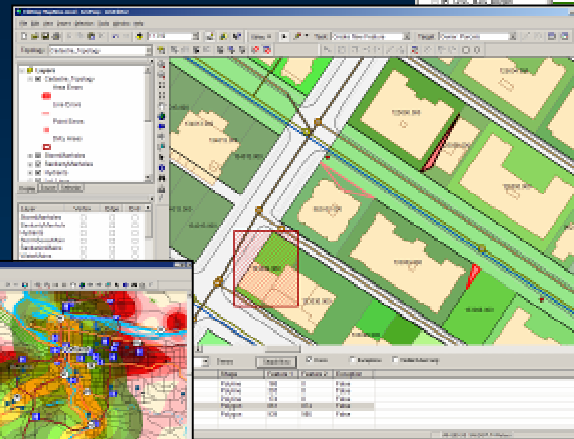
*... Improving Productivity and Usability*

# ArcGIS Desktop

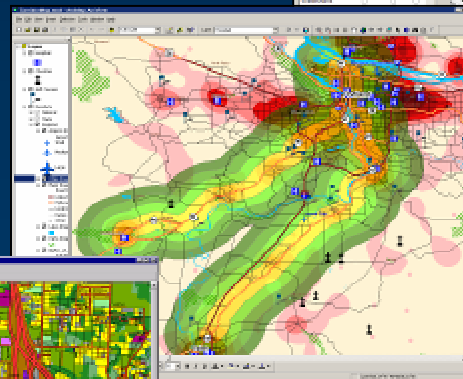
## *Many Improvements*

- Usability
- Cartography
- Charting
- Animation
- Data Compilation
- Geoprocessing
- Data Management
- Interoperability

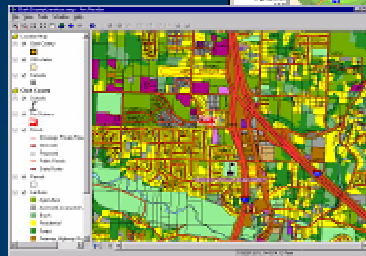
ArcEditor  
(Create / Manage)



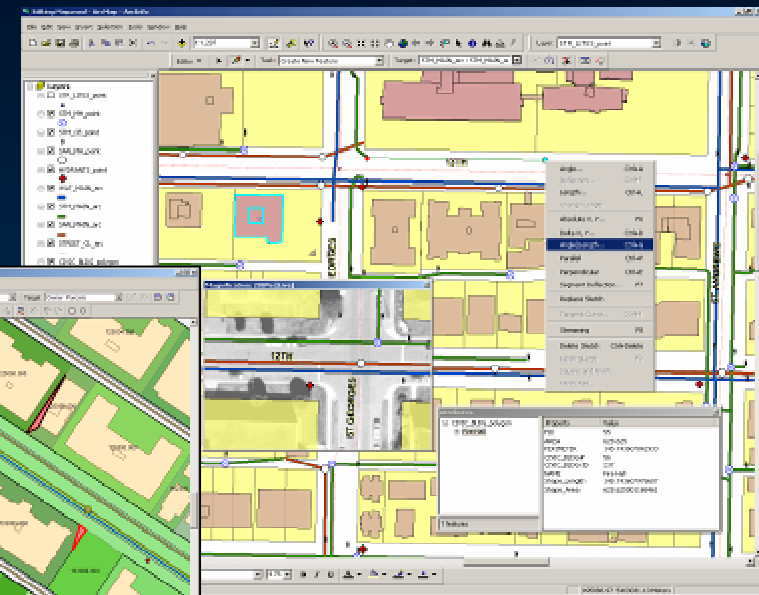
ArcView  
(Use)



ArcReader  
(View)



ArcInfo  
(Geoprocessing / Analysis)



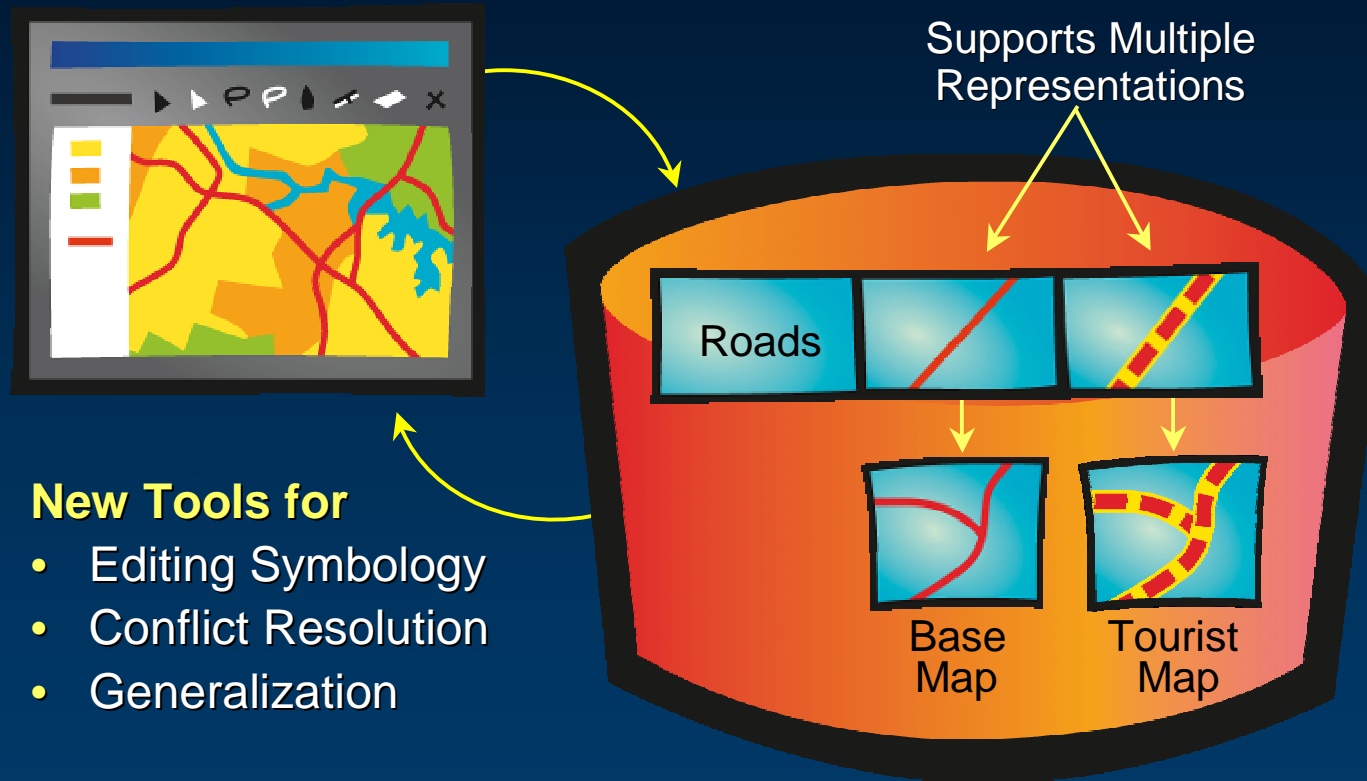
***Common, Scalable Family of Products***



# Advancing Cartography

## *Adding Cartographic Finishing Tools to ArcGIS*

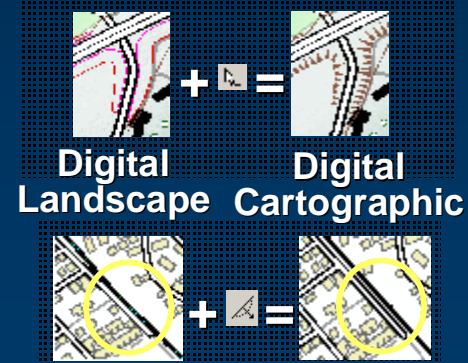
**Extends ArcMap to Create & Edit Intelligent Representations**



***Extends the Geodatabase to Support Cartographic Representations***

# Advancing Cartography

## *Integrating Human Artistry*

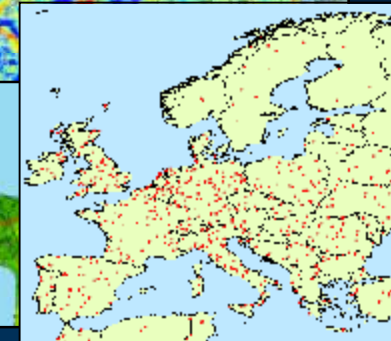
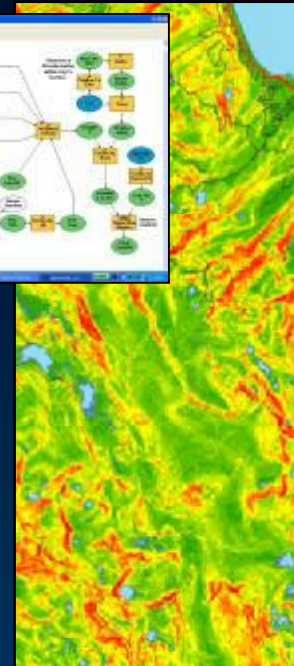
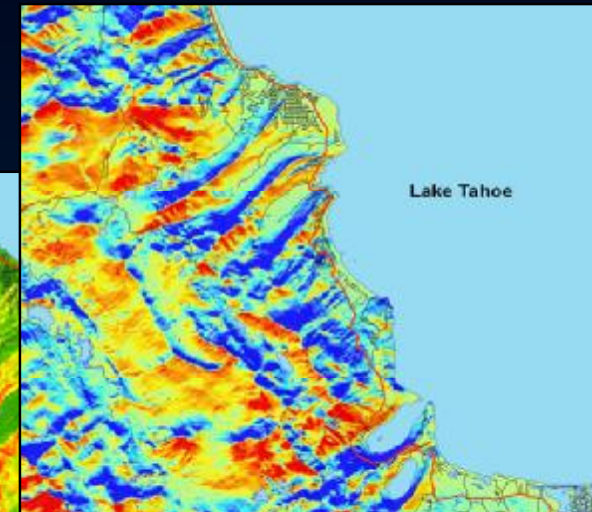
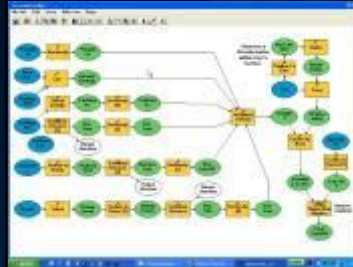


*... with Computer-Generated Mapping*

# Improving Geoprocessing

## *Many New Capabilities*

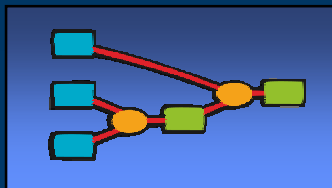
- Very Large Data Sets
- Spatial Analysis Tools
  - Solar Radiation
  - Random Sampling
  - Statistics / Geostatistics
  - Vector-Raster Improvements
- Fast Geocoding (5-10x)
- Time Based Modeling / Simulation
- Batch Geoprocessing
- Server Based



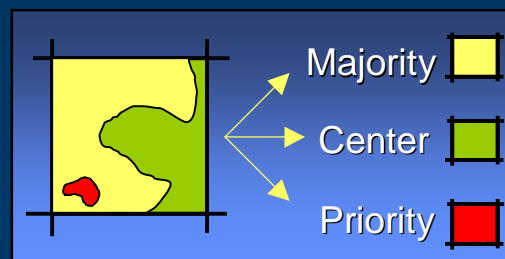
Solar Radiation

Random Sampling

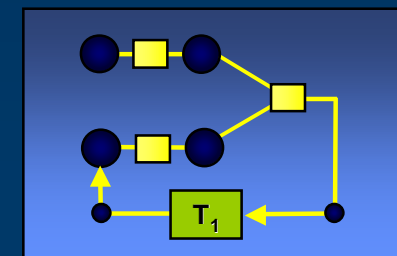
GIS Server



Raster Conversion



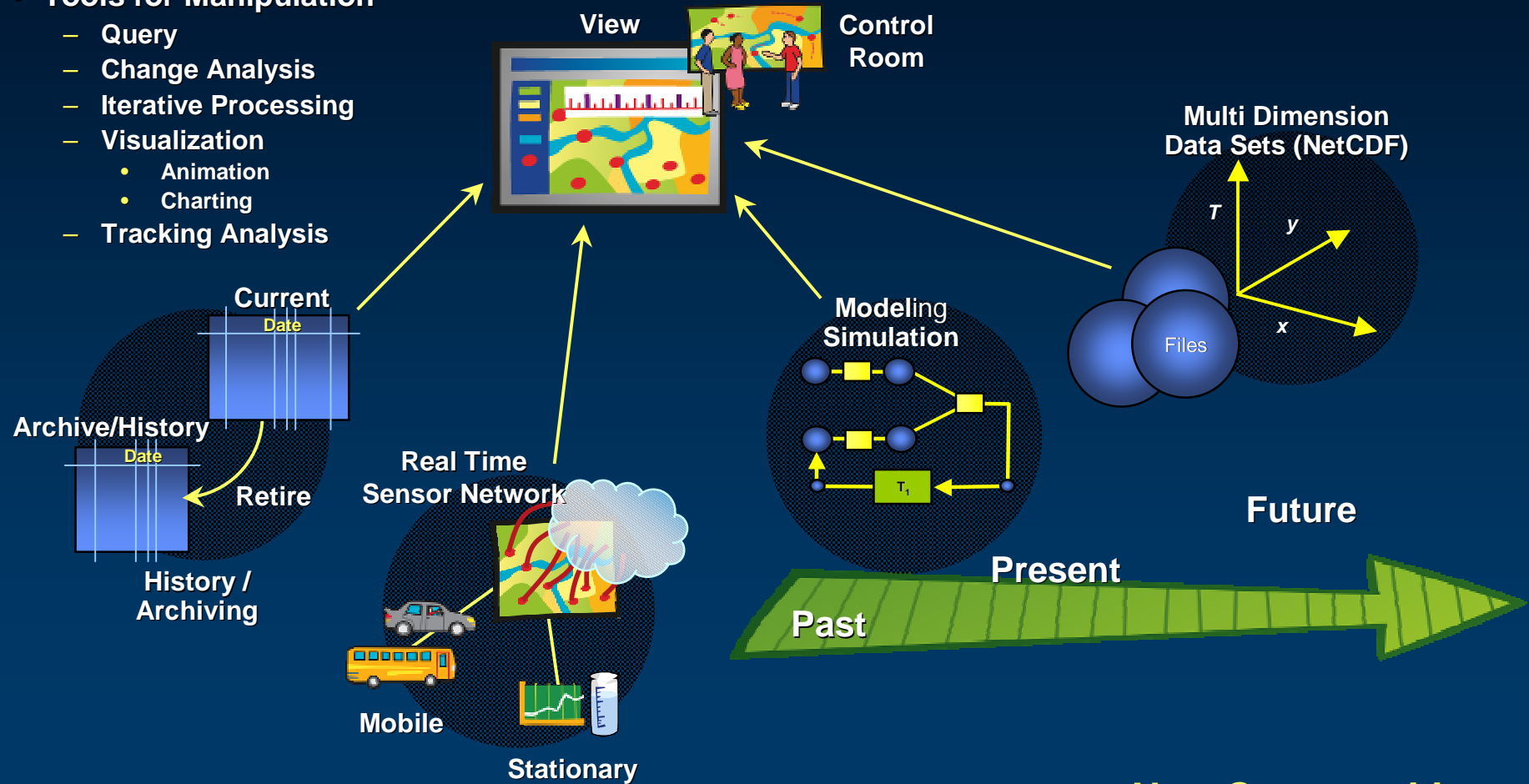
Model Looping



# Integration of Time

## *New Ways to Manage, Analyze & Visualize Geography*

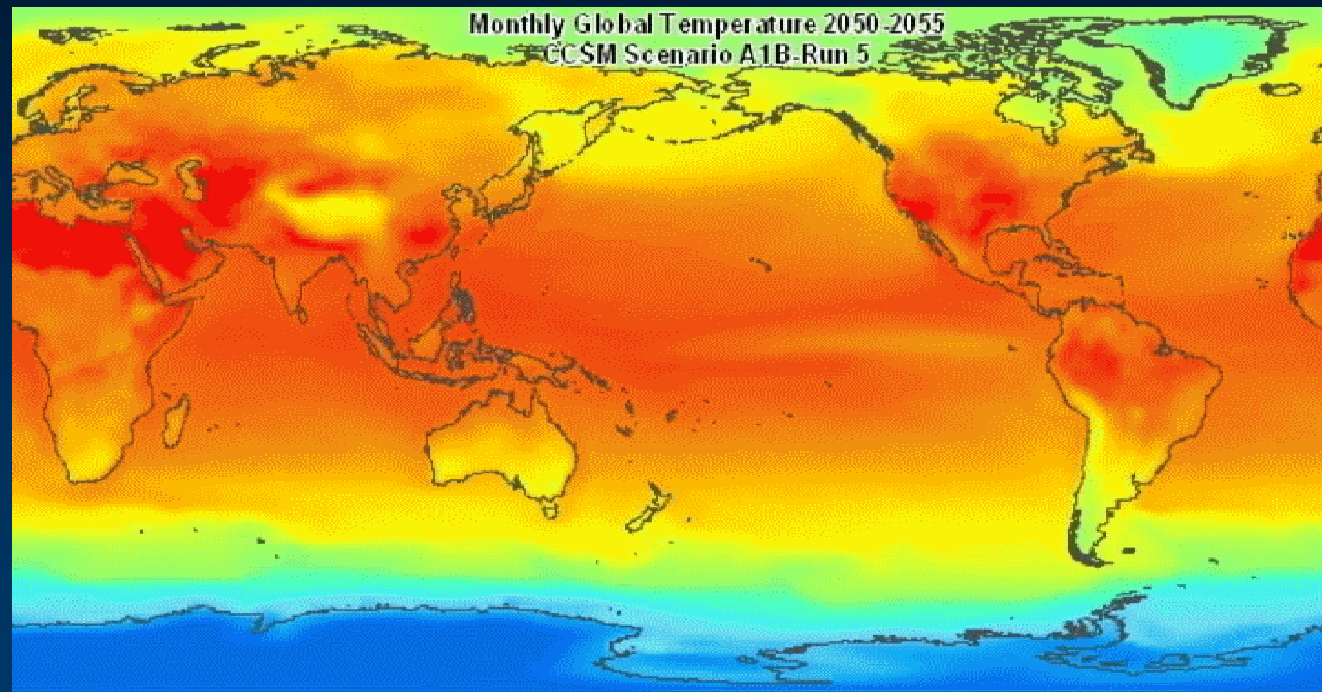
- Extended Data Model
- Tools for Manipulation
  - Query
  - Change Analysis
  - Iterative Processing
  - Visualization
    - Animation
    - Charting
  - Tracking Analysis



*... New Opportunities*

# Integration of Time

- Extended Data Model
- Tools for Manipulation
  - Query
  - Change Analysis
  - Iterative Processing
  - Visualization
    - Animation
    - Charting
  - Tracking Analysis



*... New Ways to Manage, Analyze & Visualize Geography*

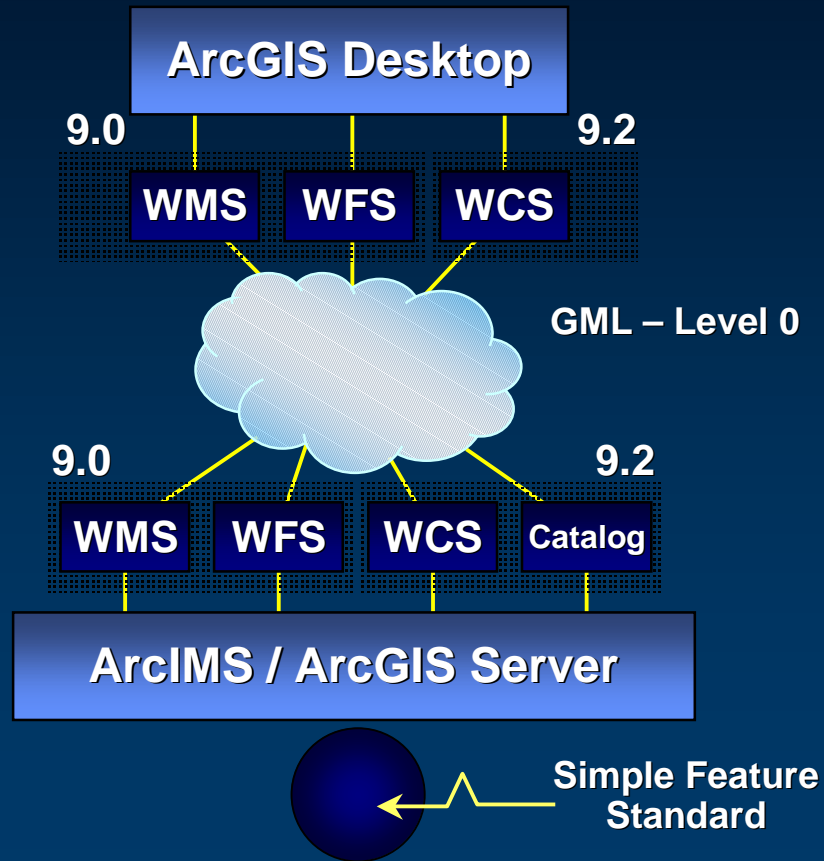




# Interoperability Support

*Ensuring an Open Platform*

## Support for OGC Standards

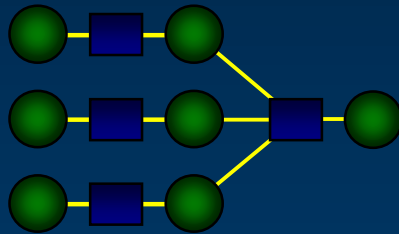


# Data Interoperability Extension

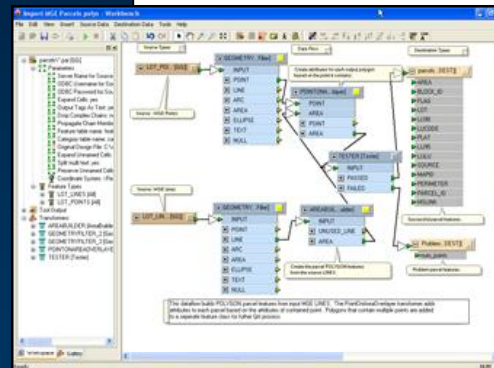
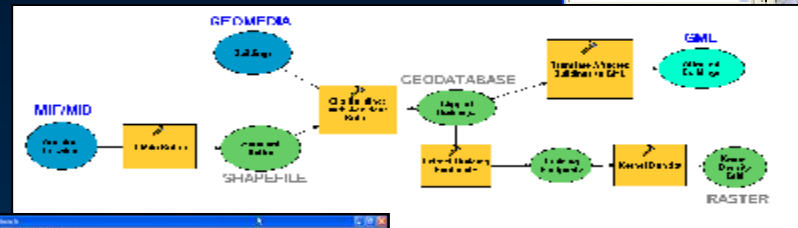
## New Data Sources & Converters

### Supports Complex Data Transformation

- Formats
- Data Models
- Schema
- Projections / Datum

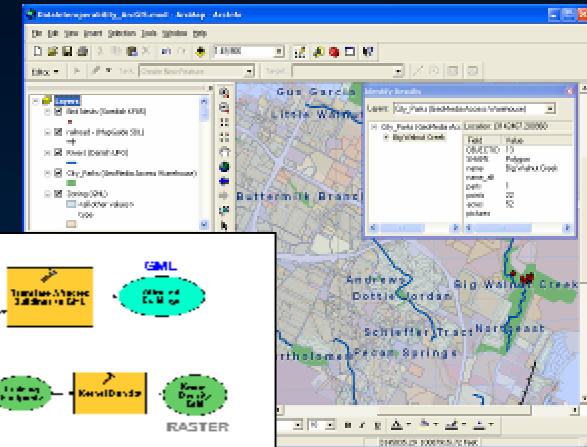


Integrated with ModelBuilder



Creating Custom Format Converters

Direct Read & Use

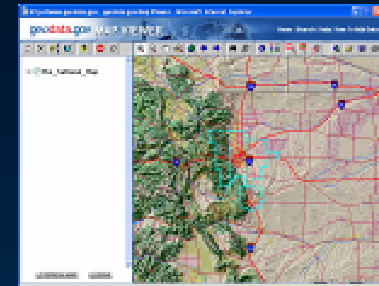


Support for OGC Standards

# In Katrina the ETL Process was Employed to Create an Integrated Database

## Integrating Existing Local, State And Federal Data

National  
Data Model



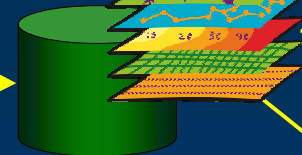
Data Sets

- Local Gov
- State Gov
- Federal Gov
- Commercial

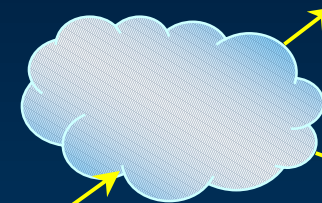


Spatial ETL

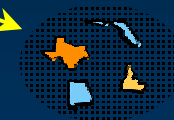
- Transformation
- Conversion
- Integration



Database  
& Server



Data & Services



Data Bricks



DVD Data Sets

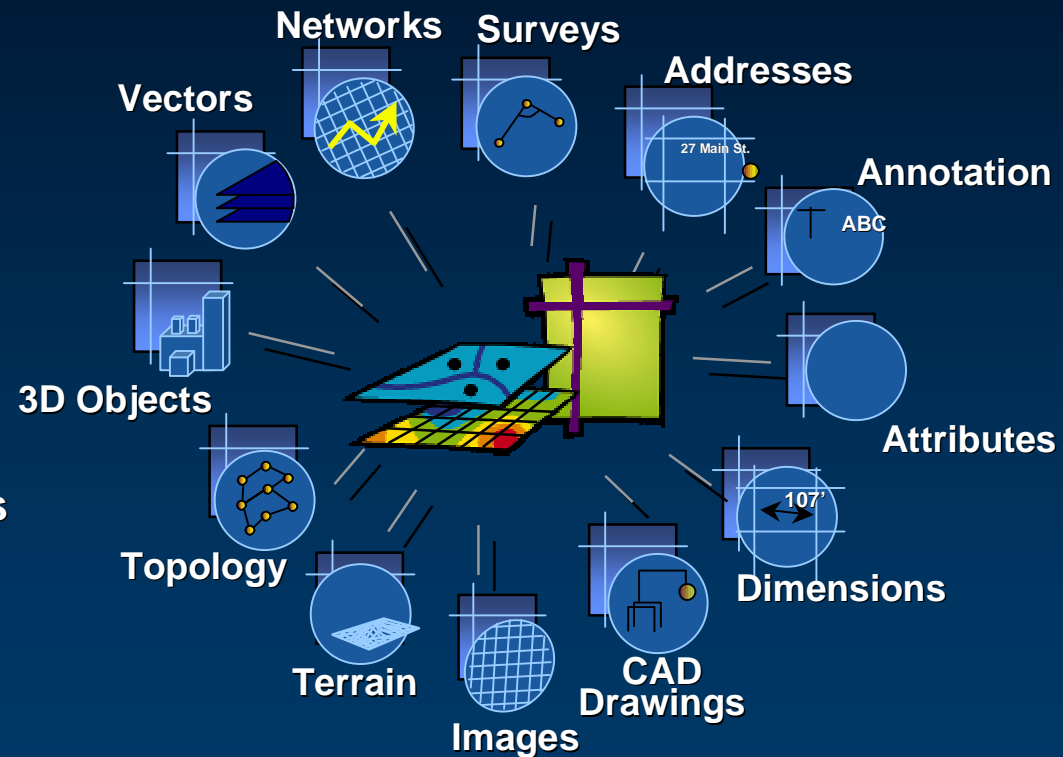
**... A Possible Model for National GIS  
... Bringing Many Benefits**

# Improving Geo Data Management

## *Extending and Simplifying the Geodatabase*

- Data Modeling
- File and Work Group Geodatabase
- Simplified Administration
- Distributed Data Management
- Spatial SQL
- History / Archiving
- Non Version Editing
- High Precision Coordinates

**Geodatabases Model and Manages All Geographic Data Types**



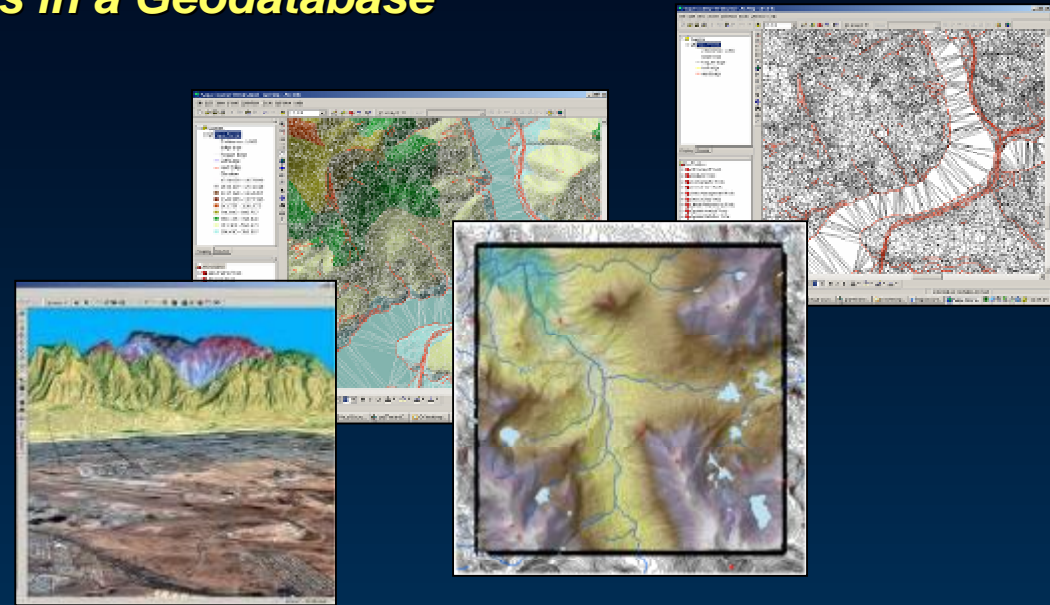
***Reflecting Various Sciences, Technology, and Methods For Spatial Measurement***



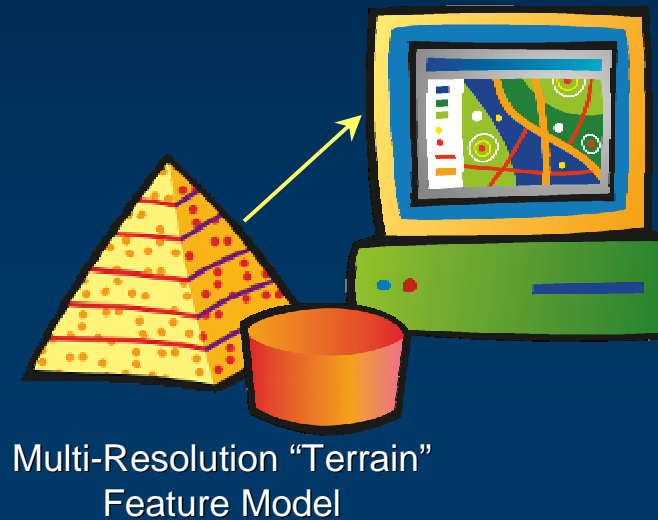
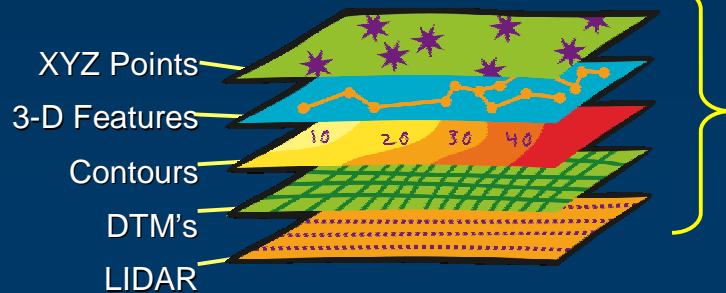
# Managing Terrain Surfaces

## Multi-resolution Terrain Surfaces in a Geodatabase

- Very Large Data Sets (Billions of Points)
- Fast



### Integrates All 3-D Data

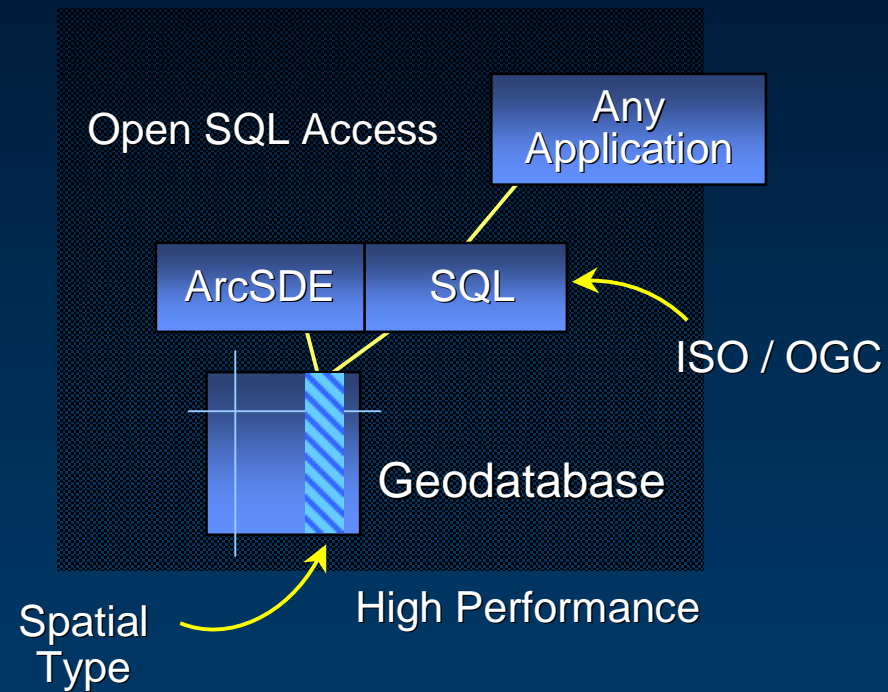


### Supports

- Contouring
- Hillshade
- Field of View
- Line of Sight
  - Slope
  - Solar

# Extended Geodatabase Management

*Support for Simple Database Access*



*Integrating GIS Into the Enterprise*

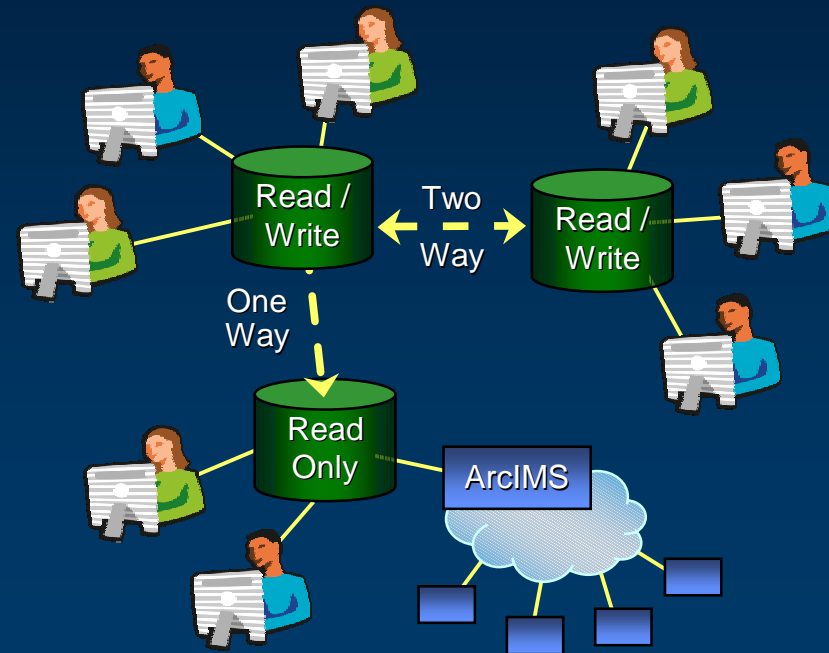
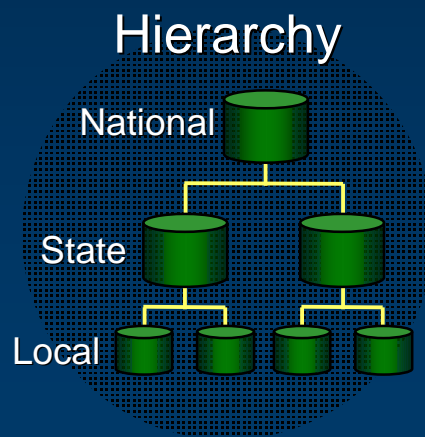
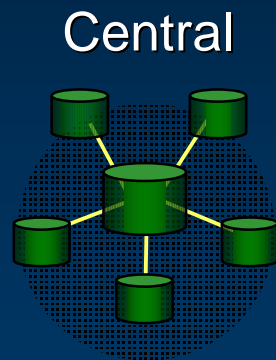
# Managing Distributed Data

## *Replication of Geographic Information*

- Change Only Updates
- Synchronized Periodically
- Works on the Web or Courier

### Supports

- Collaborating Agencies
- Co-Data Producers
- Central & Regional Offices
- Mobile Units

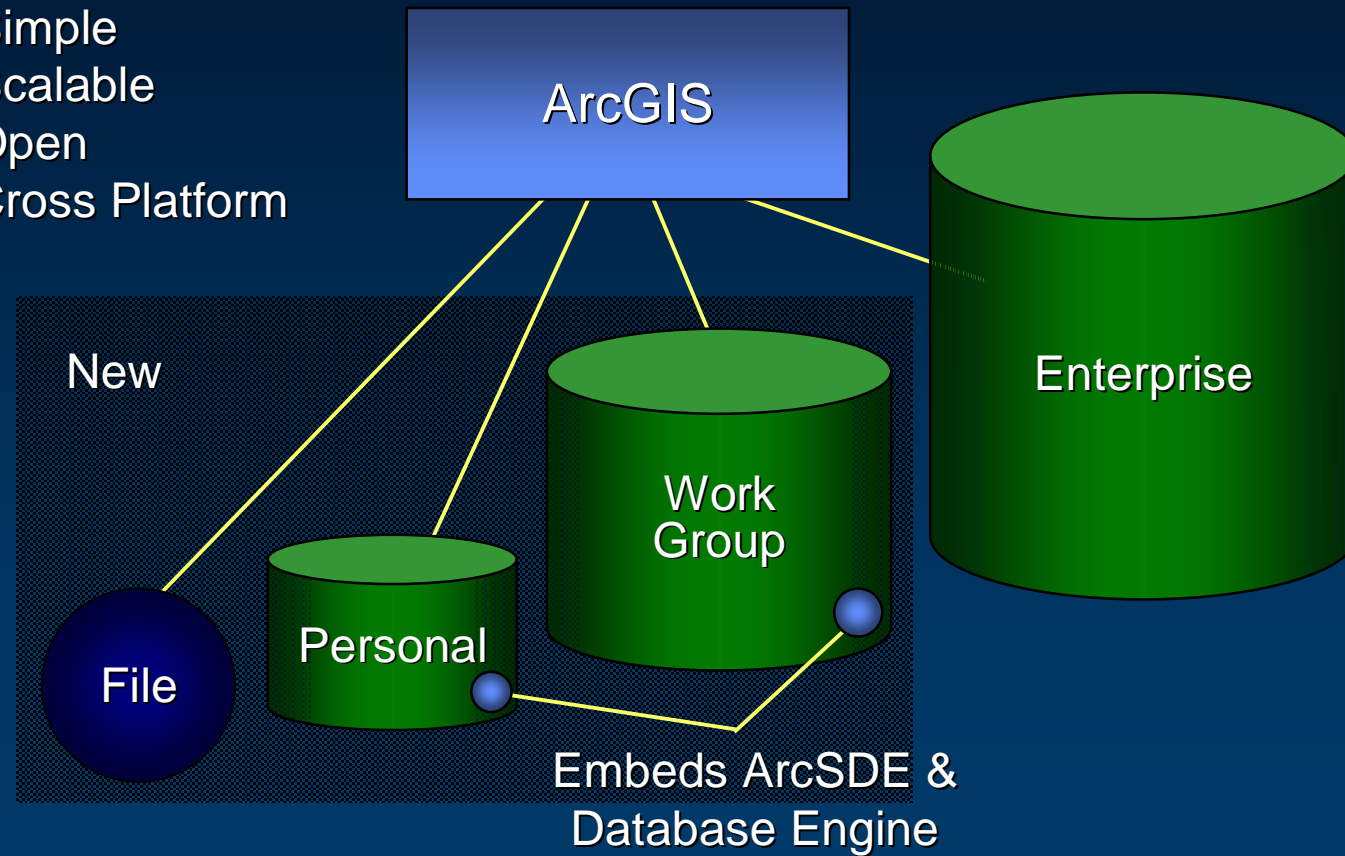


*... Key Technology For GeoWeb*

# Simplifying Geodatabases

*New Support for File, Personal and Work Group Geodatabase*

- Fast
- Simple
- Scalable
- Open
- Cross Platform

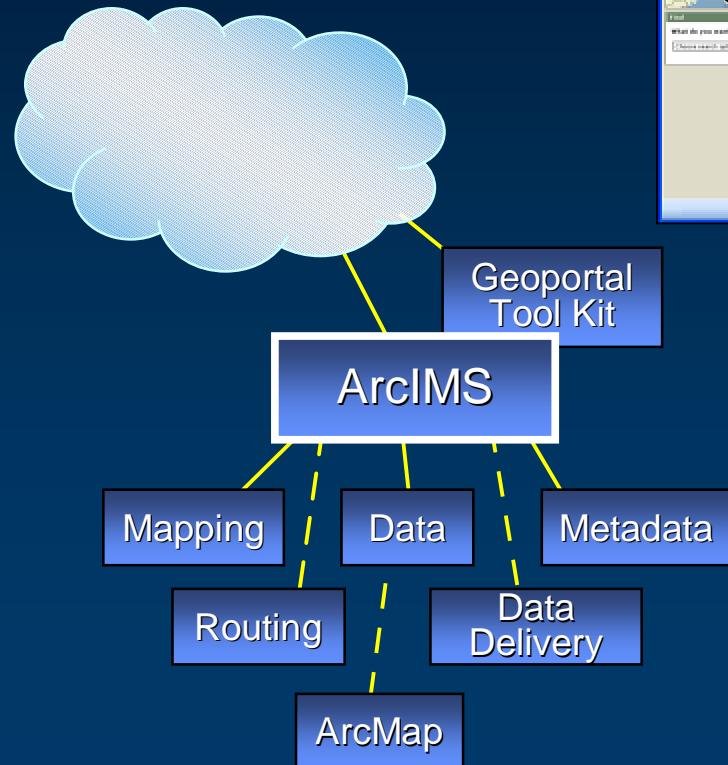


# ArcIMS 9.2 — A Major Release

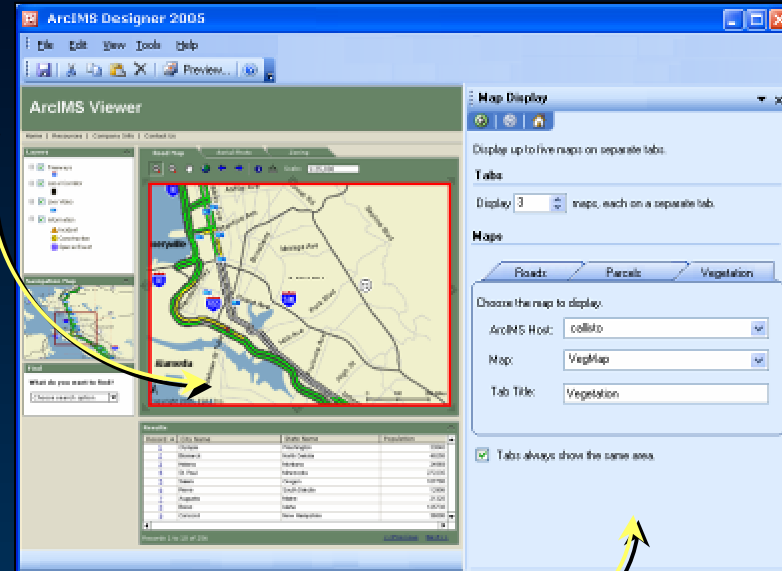
## Mapping, Data Sharing & Catalog Services

### Many Improvements

- Install / Administration
- Performance
- New Viewer / Designer
- Modernized .NET and Java Integration
- Quality
- OGC Support
- Extensions



Viewer



Designer

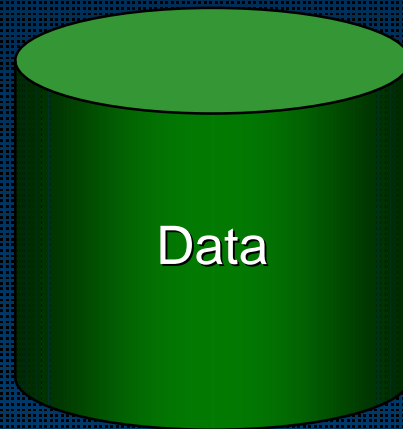
*Integration with ArcGIS*

# ArcGIS Server

*Server Based GIS*

## New Approach for Deploying GIS

Data and Analysis  
On the Server



Map

Globe

Geoprocessing

Routing

Tracking

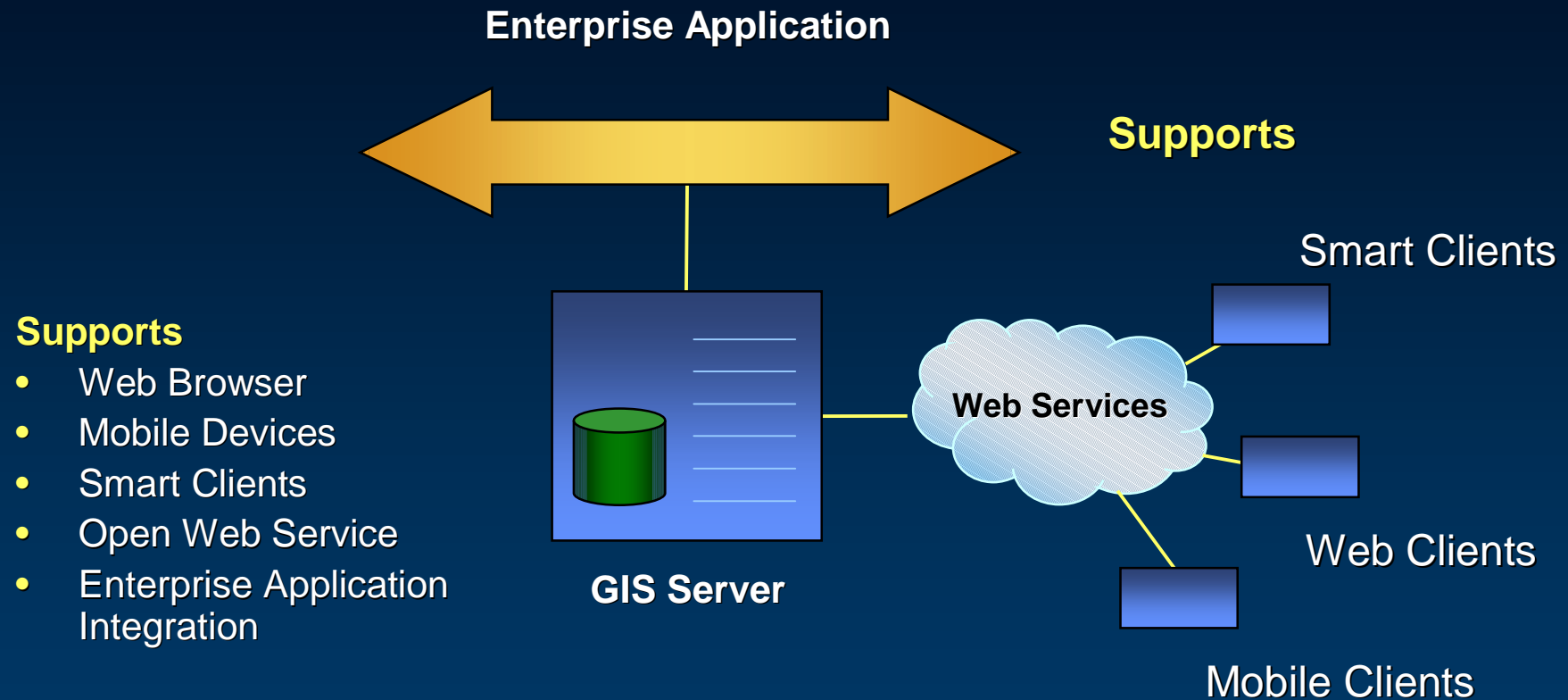
Database  
Management

Write your own  
Service



# ArcGIS Server

## Server Based GIS

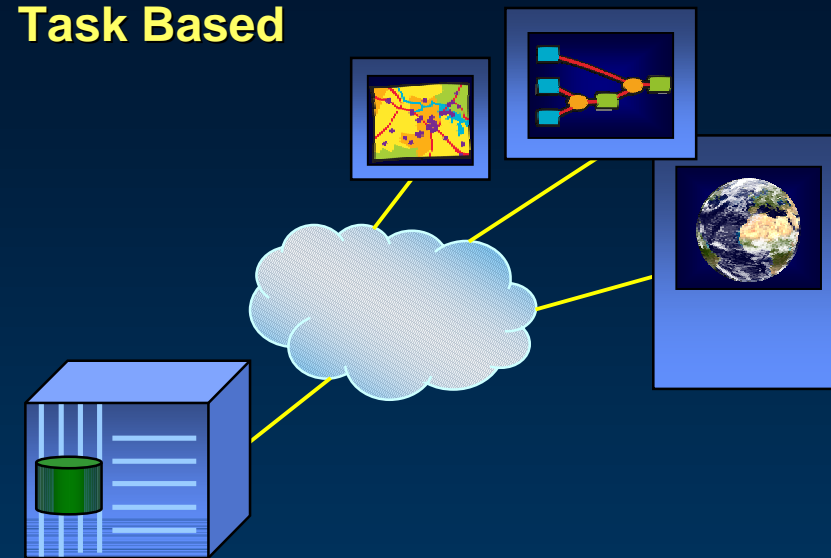


*... Centralized GIS Development and Processing*

# GIS Server Supports ArcGIS Explorer

*Simple, Fast and Free 3D Viewer*

## Task Based



GIS Server

## Services

- Maps / Globes
- Analysis Functions
- Data Fusion (Mash ups)



*... Making it Easy to Access, Fuse, Analyze and Visualize Geospatial Data*

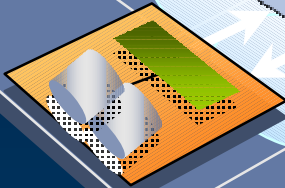
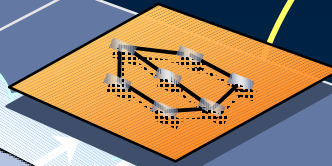
# ArcGIS Server Can Be Integrated with Other Enterprise Systems

Web Services & Messaging

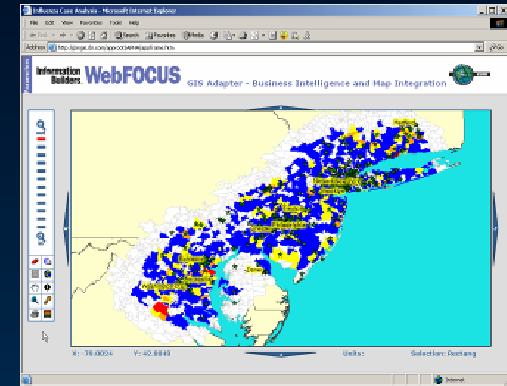
Application

Enterprise Service Bus

Other Enterprise Systems

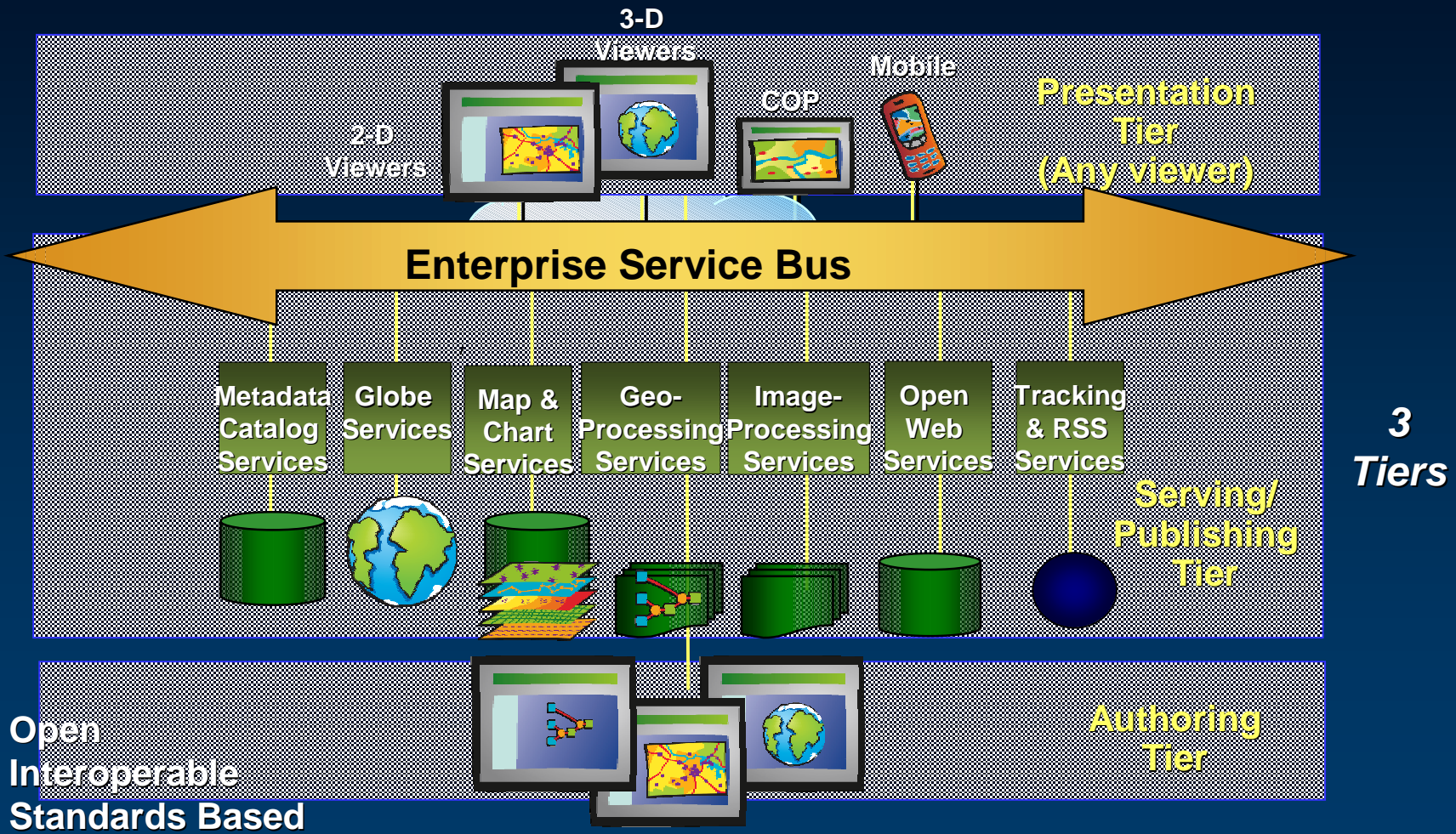


Public Health Information  
Disease Surveillance



... Open, Flexible and Standards Based

# ArcGIS Server Provides A Framework For Integration



- Open
- Interoperable
- Standards Based

*... And Integrates With Standard IT Infrastructure*

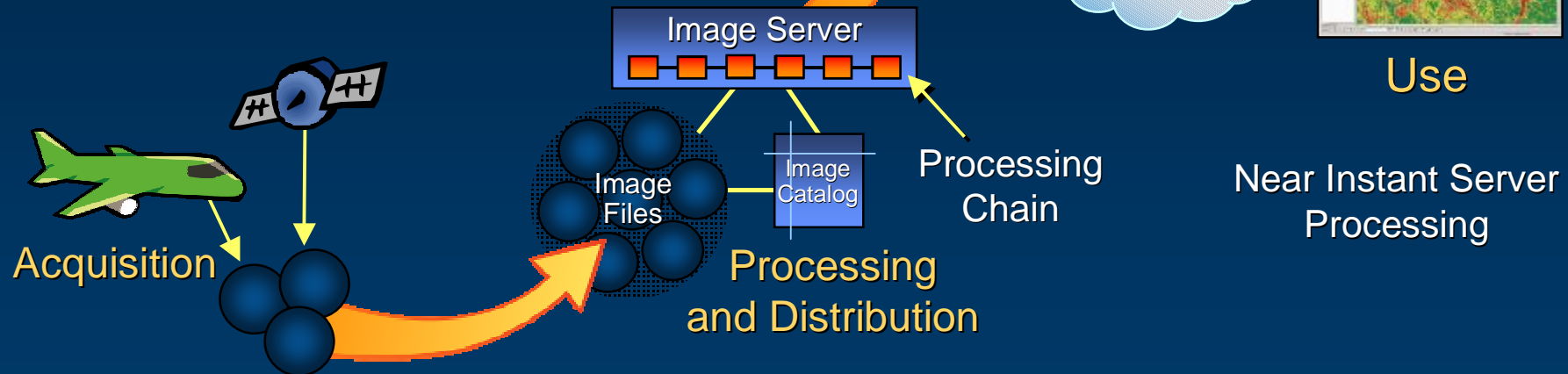
# Image Server Expands GIS Server Strategy

## *New Paradigm for Processing and Serving Geoimagery*

### On-the-Fly

- Georeferencing
- Ortho Rectification
- Pan Sharpening
- Mosaicing
- . . .

Any Desktop Client  
(GIS / CAD / Imaging Processing / Web)

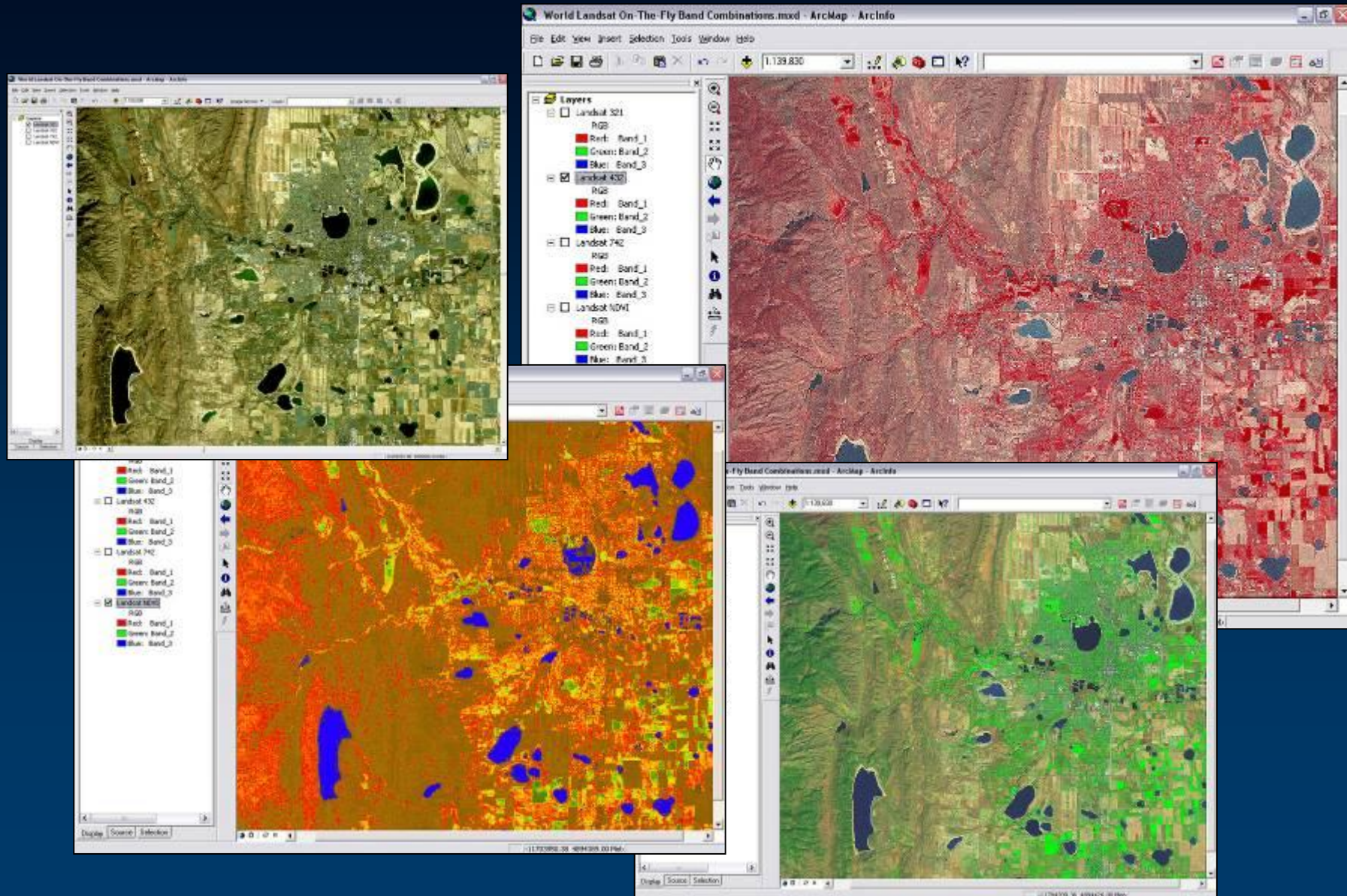


*. . . Reduces Time  
Between Acquisition and Use*



# Image Server Visualization

*Multiple Representations*

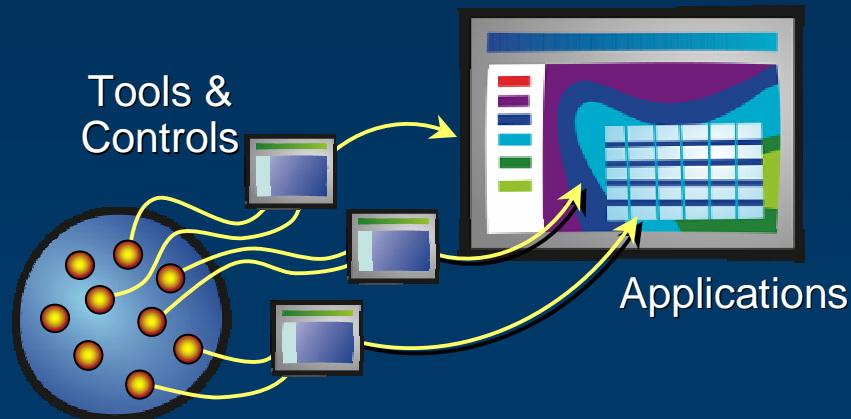




# ArcGIS Engine 9.2

## GIS Components for Desktop Developers

- Hundreds of Tools
- All Desktop Extensions
- Many New Controls



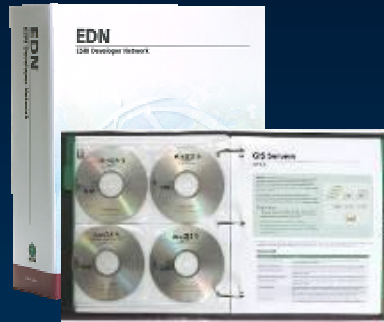
**... Embed GIS in Your Application**

# ESRI Developer Network (EDN)

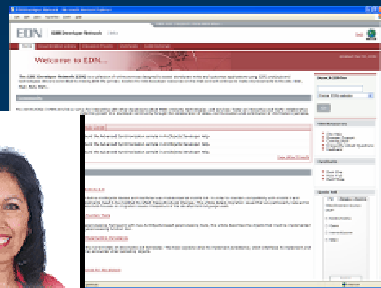
*Provides all ESRI Developer Technologies in a Simple Product*

## Web Support

- Developer Forums
- Technical Support
- SDK Updates
- Help
- Samples



*Annual Developer Subscription*



## Software Library

- ArcSDE
- ArcIMS
- ArcGIS Server
- ArcGIS Engine
- ArcWeb Services

*For Development, Testing and Demonstration*

# Mobile GIS Strategies

- ArcPad.....Complete Solution
- Mobile ADF.....Focused Apps
- ArcWeb Services.....Hosted - LBS
- ArcGIS Engines.....Desktop



# ArcWeb - Hosted GIS Services

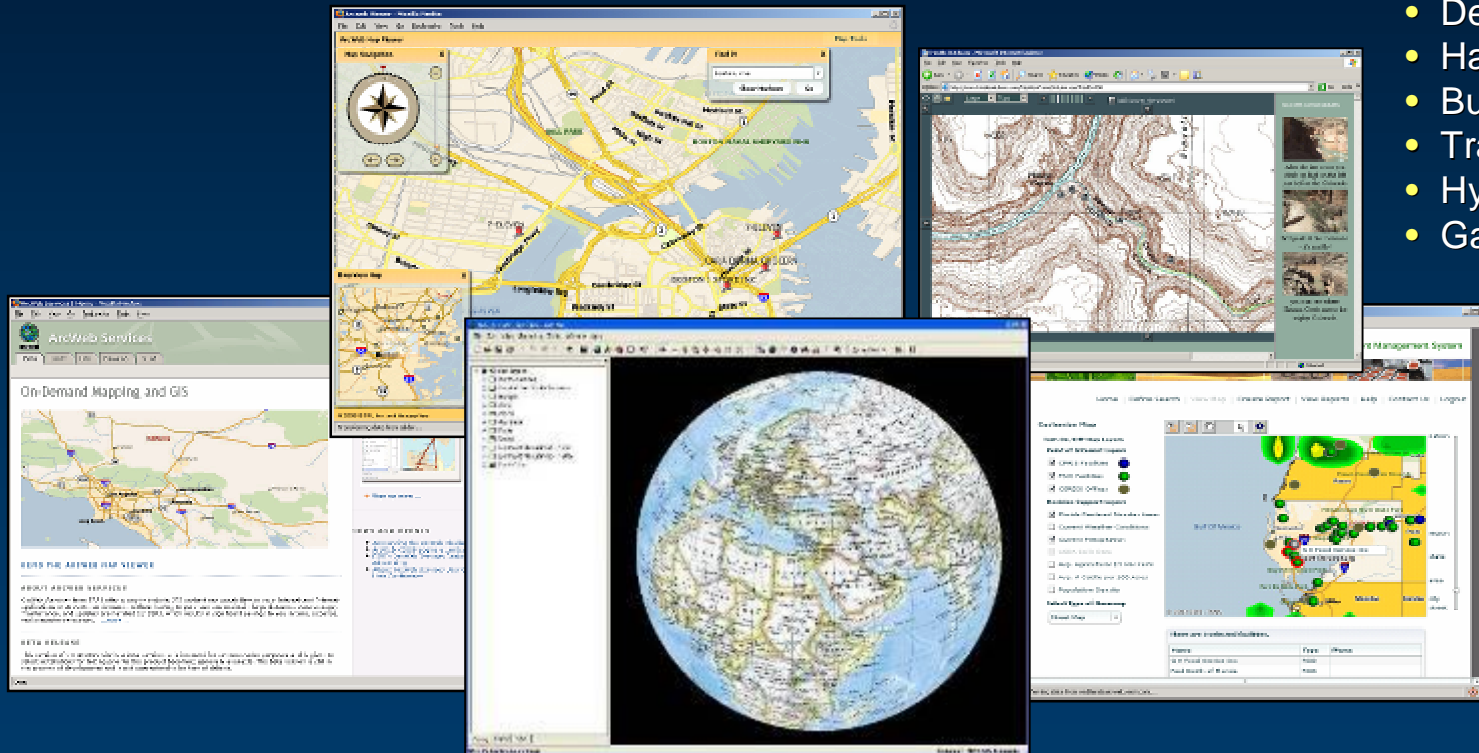
## Building Web Applications Using Hosted Services

### ... On Demand Mapping and GIS

#### Three Types of Services

- **Public** - Individuals, Public Service & Developers
- **Commercial** - Government & Business
- **Hosted** - Outsourced Application Hosting

- Imagery
- Weather
- Geocoding
- Streets
- Mapping
- Routing
- Demographics
- Hazards
- Business locations
- Traffic
- Hydrographic Maps
- Gazetteer



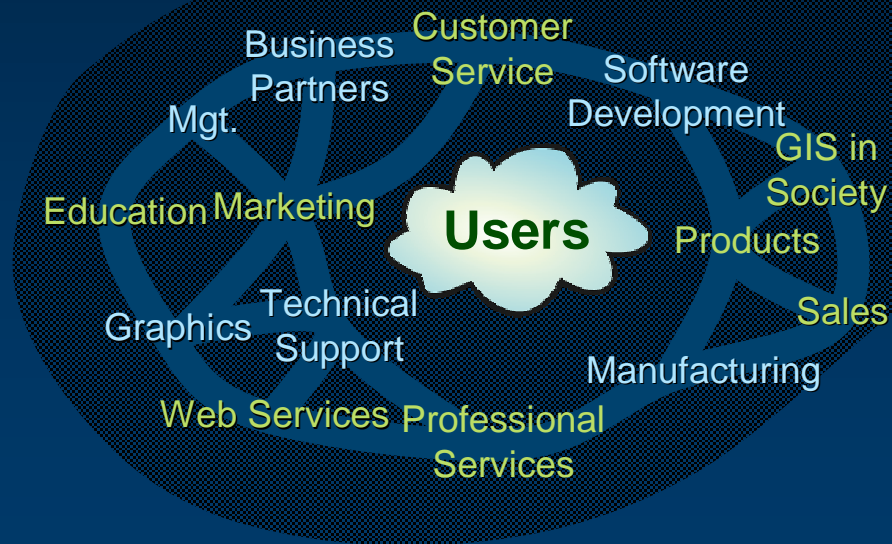
**Hundreds of Successful Applications & Solutions**



# Our Work

- Software
- Education
- Technical Support
- Professional Services
- Relationships
- GIS in Society

# Our Organization

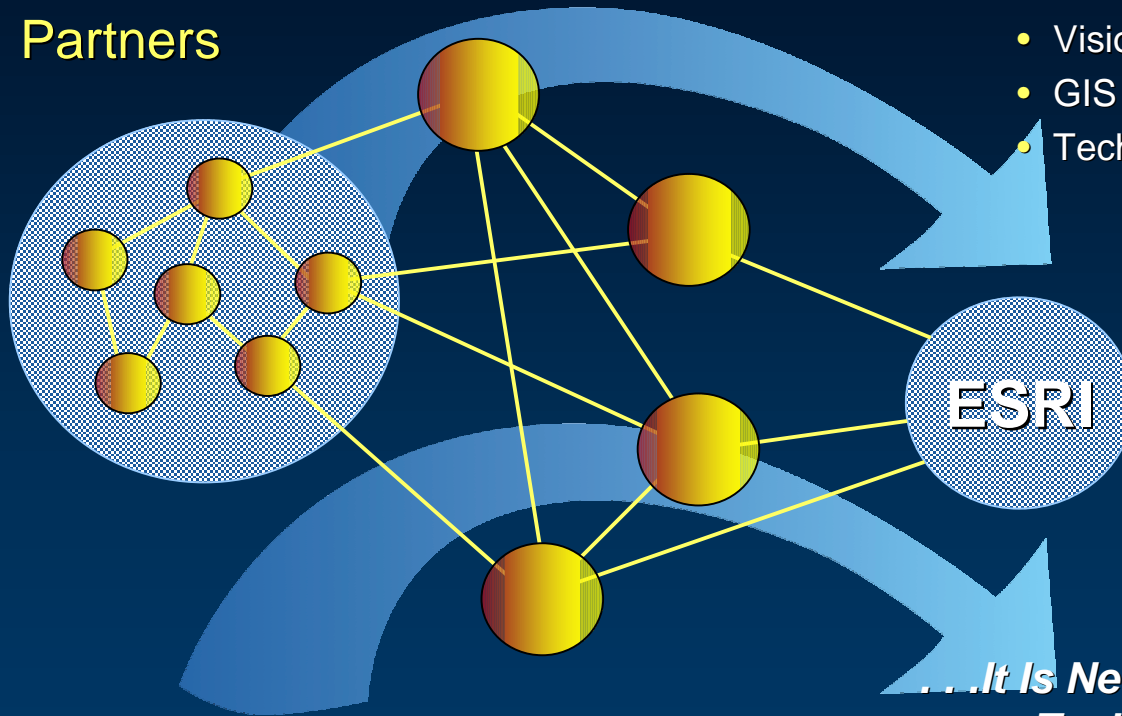


***A Global Network of Teams***

***Supporting Your Work***

# Our Relationship with Our Users is Important

Business Partners



Understanding Their

- Vision, Mission & Requirements
- GIS Platform Needs
- Technology Challenges

*...It Is Necessary For Improving Our Technology and How We Serve Many GIS Disciplines*

*Development based upon Feedback / Direction*



# Our World Needs Better Management

A satellite-style image of the Earth, showing the Americas on the left, Europe and Africa in the center, and parts of Asia on the right. The image is dark, with the oceans appearing as deep blue and the continents in shades of green and brown. The text is overlaid on the top and bottom of the image.

*... More Rational Approach That Considers  
& Integrates All the Factors ...  
... A Geographic Science Approach*

