

Closing Address

Prof. Stig Enemark

 President



XXIV FIG International Congress

Facing the Challenges – Building the Capacity
11- 16 April, 2010, Sydney, Australia

Thanks to our Sponsors

Platinum



Titanium



Platinum



The XXIV FIG International Congress 2010

The biggest FIG Congress ever

100+ countries, 2000+ participants, 800+ papers, 150 sessions

A truly global event, despite being
the furthest distance from the FIG office!



Welcome Reception



Opening Ceremony



'Traditional owners of our land
nurtured this great continent for
tens of thousands of years'
Marie Bashir

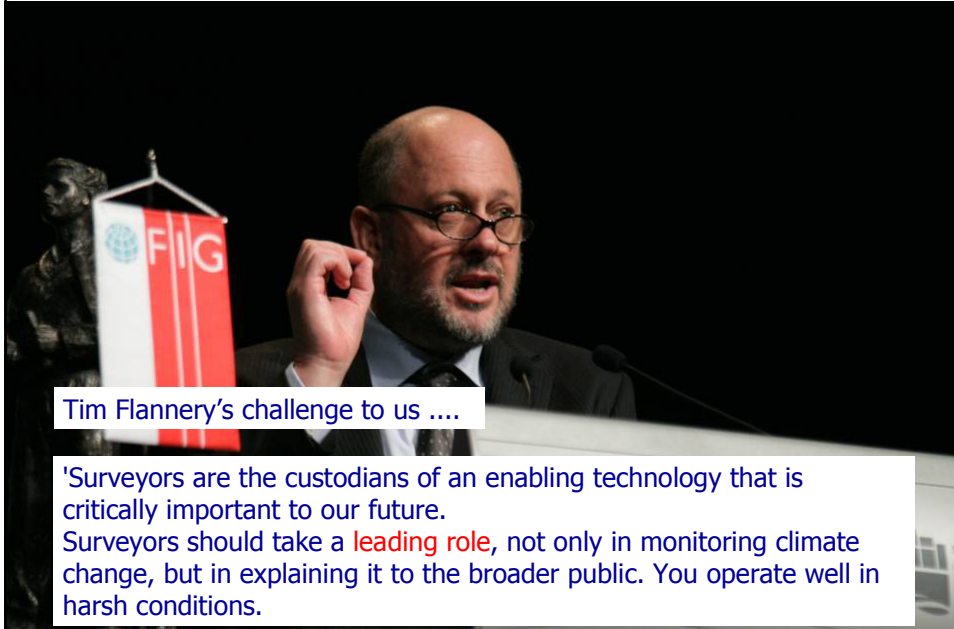
Opening Ceremony



The challenges that Land Professionals
face today are just as socially important
as those tackled by Surveyors 200 years
ago.



Congress Keynote



Tim Flannery's challenge to us

'Surveyors are the custodians of an enabling technology that is critically important to our future.
Surveyors should take a **leading role**, not only in monitoring climate change, but in explaining it to the broader public. You operate well in harsh conditions.

Plenary Session 1 FIG Achievements for 2007-2010

Focused on the new global challenges that all relate to land governance.

Key to success is a partnership approach with UN Agencies to build the capacity to address the challenges.



We have the vision – flying high – but we need to deliver pragmatic solutions – keep our feet on the ground.



Foundation Dinner



Plenary Session 2: Spatially Enabled Society

'Transition from Spatial Information Management to
Managing Information Spatially.'
Abbas Rajabifard



Plenary Session 2: Spatially Enabled Society

'We need strong links between politics and the numerous disciplines of the surveying profession to enable better land governance. FIG needs to play a leading role.'

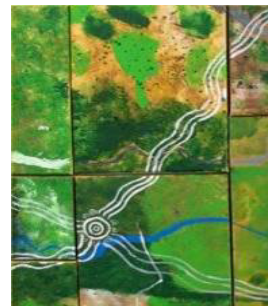
Santiago Borrero



Plenary Session 2: Spatially Enabled Society

Warwick Watkin's presented world-class best practice from NSW.

'We need to create discernable improvements to society.'



"travel lines" of the Wiradjuri people, across the Central West of NSW combining ancient and modern information



Forum for Chief Executive Officers

Successful forum gathering involving 40 Chief Executive Officers of National Mapping and Cadastral Agencies from around the world. The forum calls on FIG to:

- Promote the documentation and identification of the value of spatial information to social and economic development; and
- Encourage its Commissions to include this activity as a key aspect of their work programmes.



SSSI Reception – Government House



Plenary Session 3: The Big Challenges

2010 United Nations Guidelines on Addressing Land Issues after Natural Disasters.

Addressing land issues facilitates transitions from emergency relief to sustainable development.

Land issues an integrated part of the humanitarian cluster approach.

Post disaster community solutions may override official records.



'Is this before or after the disaster?'

Daniel Fitzpatrick

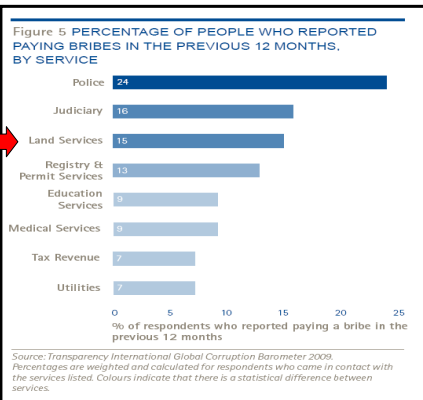


Plenary Session 3: The Big Challenges

Voluntary Guidelines on Responsible Governance of Tenure.

Created through an open partnership process and with wide participation.

Paul Munro-Faure issued a call for partnership.



Plenary Session 3: The Big Challenges

5 million new urban residents every month in the developing world.

Sea level rise threatens hundreds of millions of people living in deltas.

Cities have a key role in adaptation to climate change.

UN-HABITAT's Global Land Tool Network is a key resource.



Plenary Session 4: Technological Futures

'People don't realise that they are spatial'

Mary O'Kane

'If an infrastructure (SDI) is not an ecosystem and interact with the wider community then it will fail'

Ed Parsons

A positioning infrastructure across Australia will deliver productivity gains with potential cumulative benefit of \$73 to \$134 billion (AUD) over the next 20 years - in agriculture, construction and mining alone.

Matt Higgins



After Lunch Talks

The fourth wave of property reform -
'I have no doubt that the heart of that
new story is going to be about the need
for strong, robust institutions.'

John McLaughlin



'IQ Operator + IQ Instrument = Constant

Johannes Schwarz



'Social networking and crowdsourcing provided support for
fund raising (\$390M), SMS translation and geo-coding and
mapping from imagery for Haiti within a few days of the
earthquake'

Brent Jones



The Young Surveyors' Perspective

'data is useless unless you understand how it can
be applied', we have the skills to apply, it is time
to stand up and take our place in the sun.



'What is a surveyor/spatial professional? Location
and Position are certainly terms that seem to be
more conducive to students and the community at
large.'

Small Island Developing States

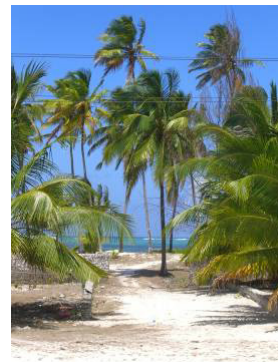
A very successful Special Seminar.



Small Island Developing States

An agenda for action was formulated on building capacity on Small Island Developing States:

- 1. Flying High with feet on the ground**
- 2. Developing vehicles for building land professional capacity**
 - for Education & Training
 - for Land Professionals
 - for Professional Organisations
 - for Regional Networks & Organisations
- 3. Building Roles & Responsibilities for Land Professionals**
 - achieving knowledge transfer
 - identifying capacities of Land Professions
 - Sharing information and experiences
- 4. Acting Responsibly**



Home Visits

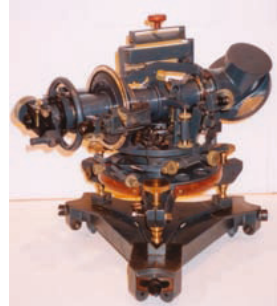


Gala Dinner



Other Highlights

- History of Surveying – highly successful 2 day seminar.
- Congress has attracted top world experts and eminent persons.
- High level technical sessions, including peer reviewed papers, flash sessions and invited sessions – in total 800 presentations and very well attended.
- Commission meetings generated development innovations.
- Spectacular Sydney



Key Messages from the Congress

Land professionals need to increase their role in developing sustainable cities.

Take a more engaging and leadership role in the area of climate change.

The partnership with UN agencies is the key to recognition and enhancing the status of the global surveying community – leading to more effective solutions to global land issues.

